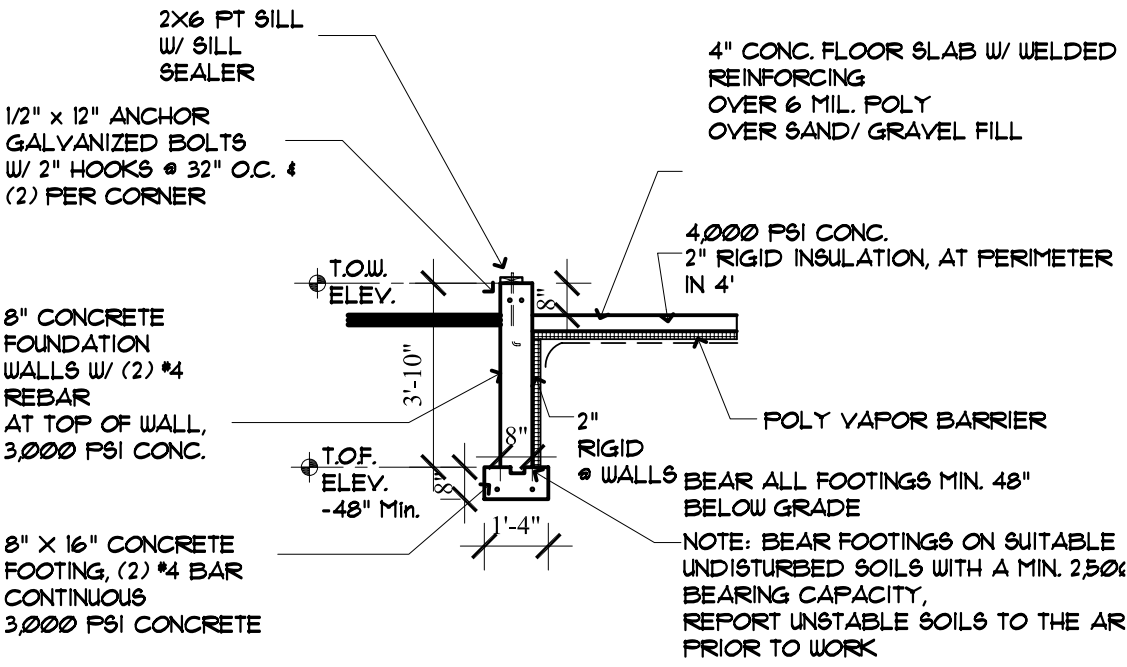


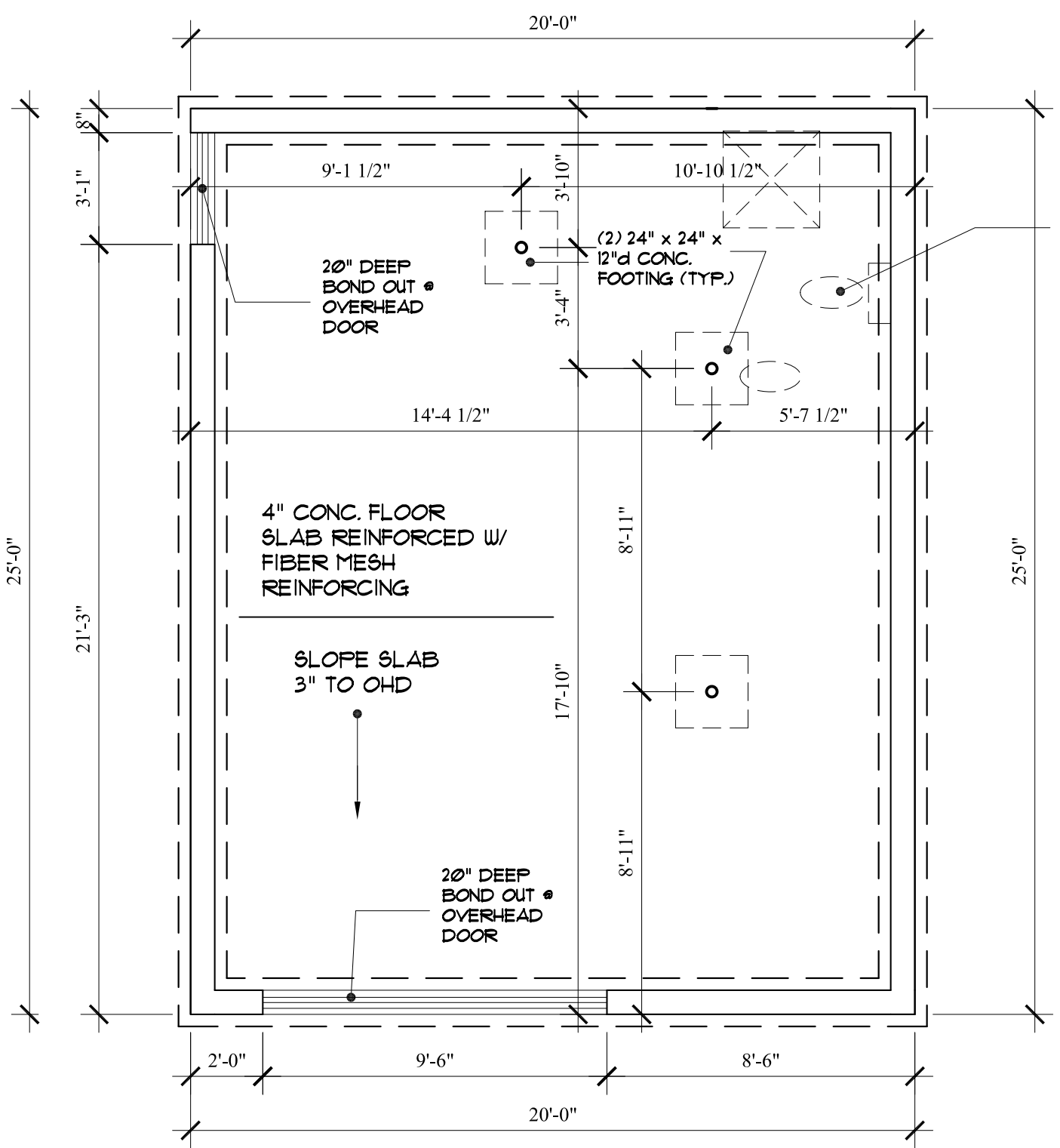
**ANNE MC CLURE**

76 FESSENDEN STREET  
PORTLAND, MAINE



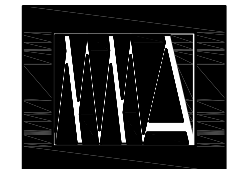
BEAR ALL FOOTINGS MIN. 48" BELOW GRADE  
NOTE: BEAR FOOTINGS ON SUITABLE UNDISTURBED SOILS WITH A MIN. 2,500% BEARING CAPACITY, REPORT UNSTABLE SOILS TO THE AR PRIOR TO WORK

- FOUNDATION NOTES:**
1. CONCRETE WALLS AS INDICATED ON CONT. KEYED FOOTING.
  2. ANCHORS AT CORNERS & 4" O.C.
  3. CONCRETE-3000psi. AT FOOTINGS.  
3000psi. AT WALLS  
4000psi. AT WALLS
  4. SOIL BEARING-2500psf.
  5. ALL FOOTINGS TO FROST DEPTH.
  6. GENERAL CONTRACTOR TO COORDINATE ALL UNDERSLAB PLUMBING.
  7. LOCATE ONE FROST PROOF HOSE BIBS



LOCATION OF UNDERSLAB PLUMBING TO UPPER LEVEL BATH  
NOTE: COORDINATE WATER AND SEWER SERVICE TO 3/4 BATH

**FOUNDATION PLAN**  
SCALE: 1/4" = 1'-0"



**MARK  
MUELLER  
ARCHITECTS**

100 COMMERCIAL ST. - SUITE 205  
PORTLAND, MAINE 04101  
P: 207.774.9057 - F: 207.773.3851  
E: rfi@muellerarchitects.com

SEPTEMBER 23, 2013

**A-4.1**