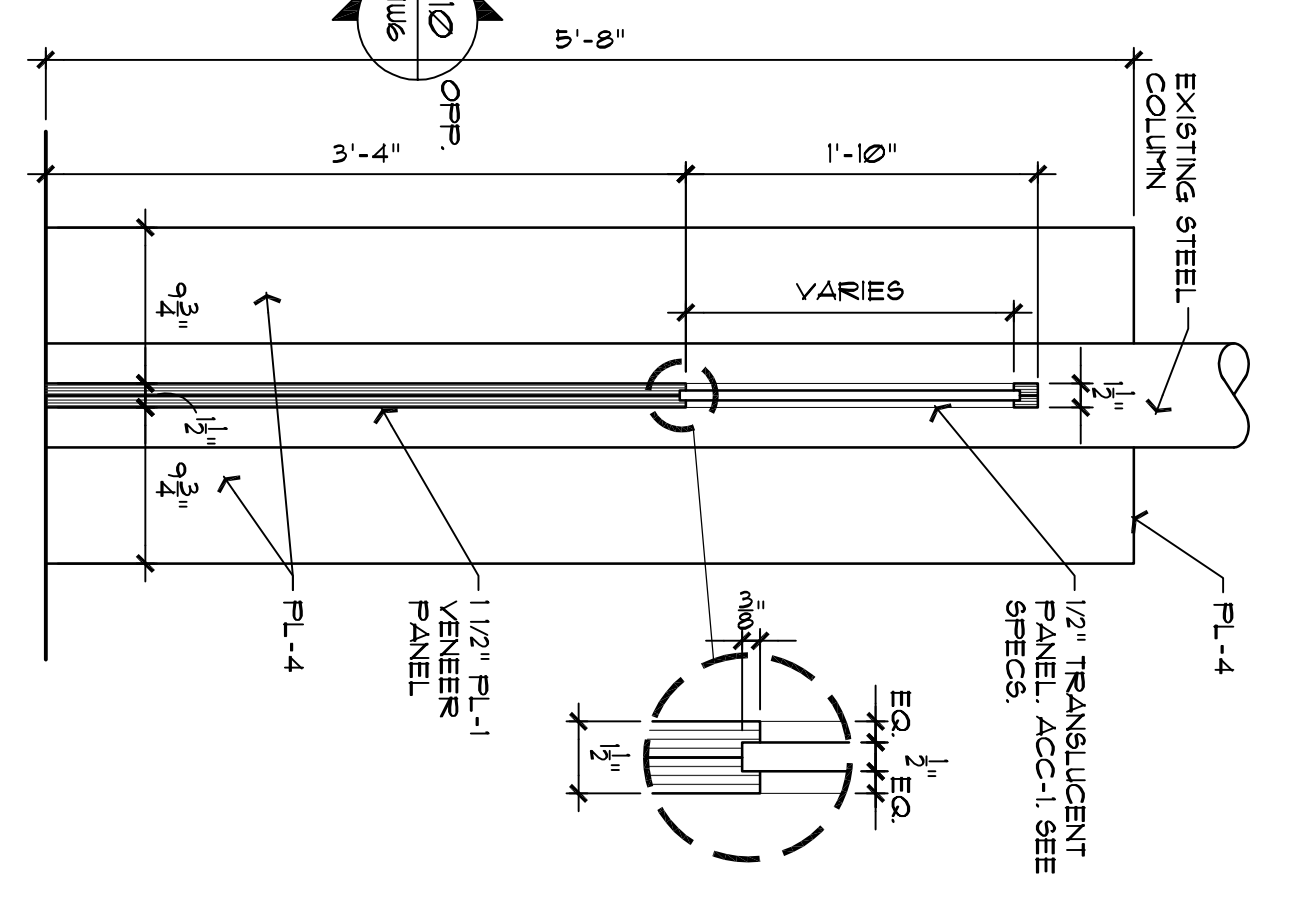
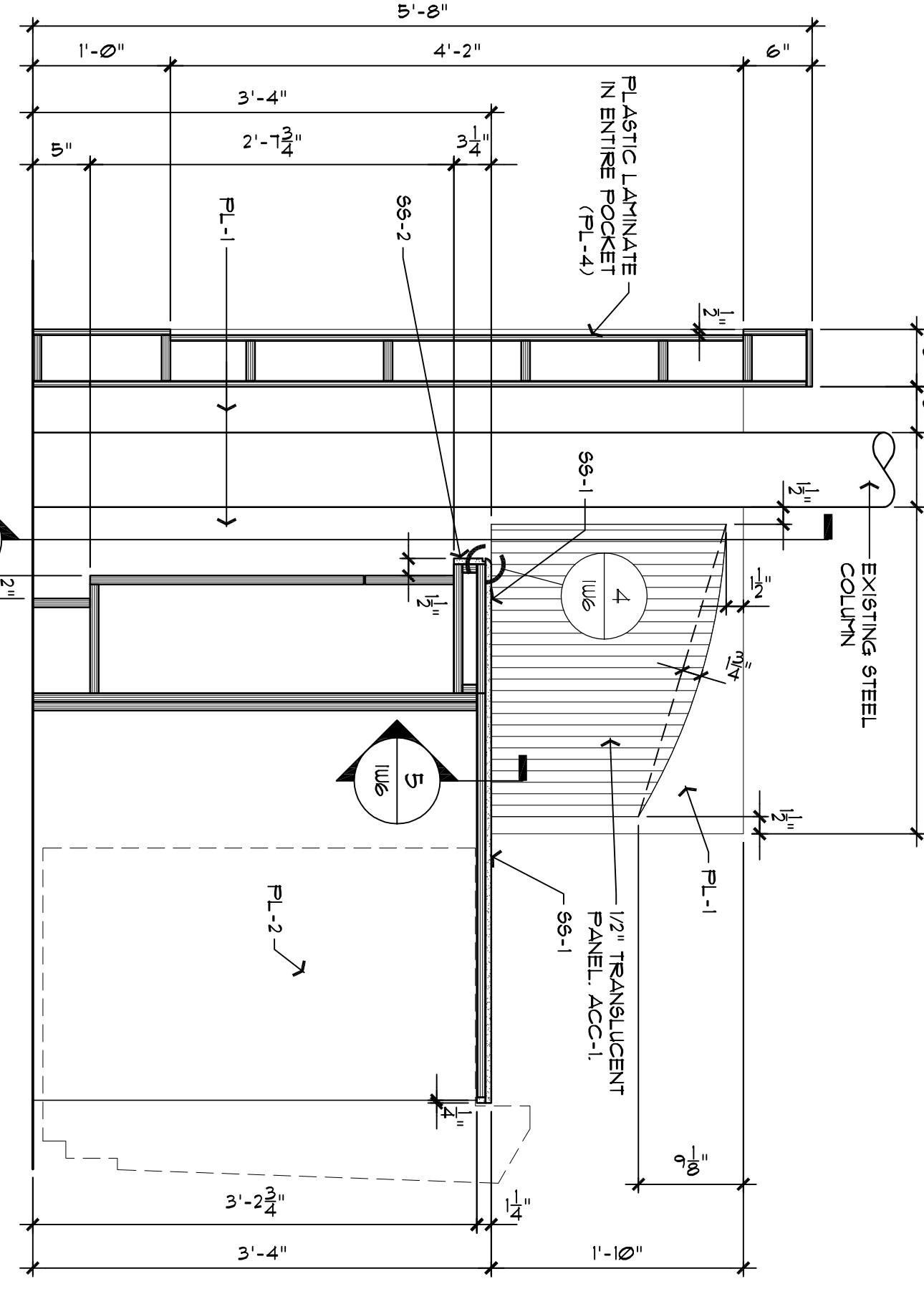


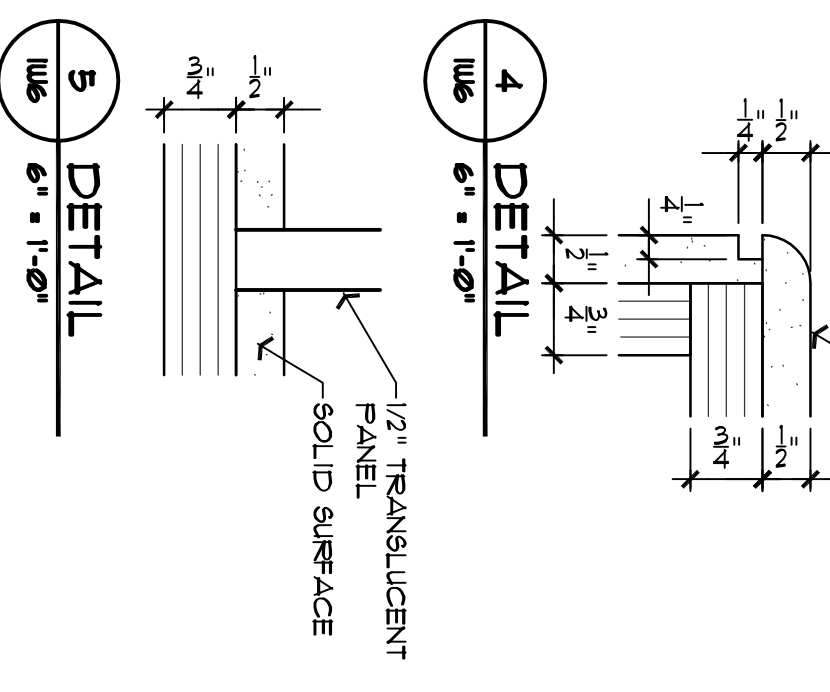
1 TELLER POD PLAN
1/8" = 1'-0"



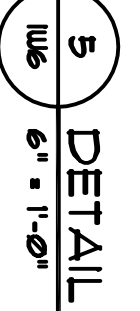
2 SECTION
1/8" = 1'-0"



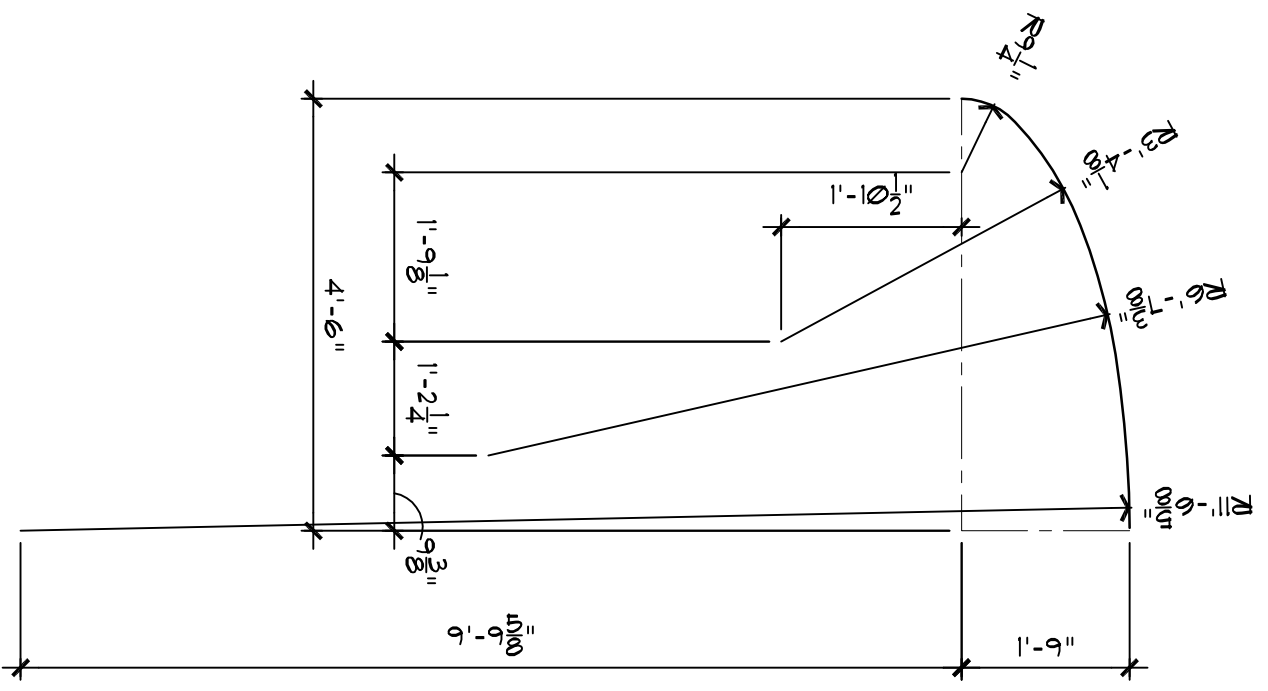
3 SECTION
1/8" = 1'-0"



4 DETAIL
6" = 1'-0"



5 DETAIL
6" = 1'-0"

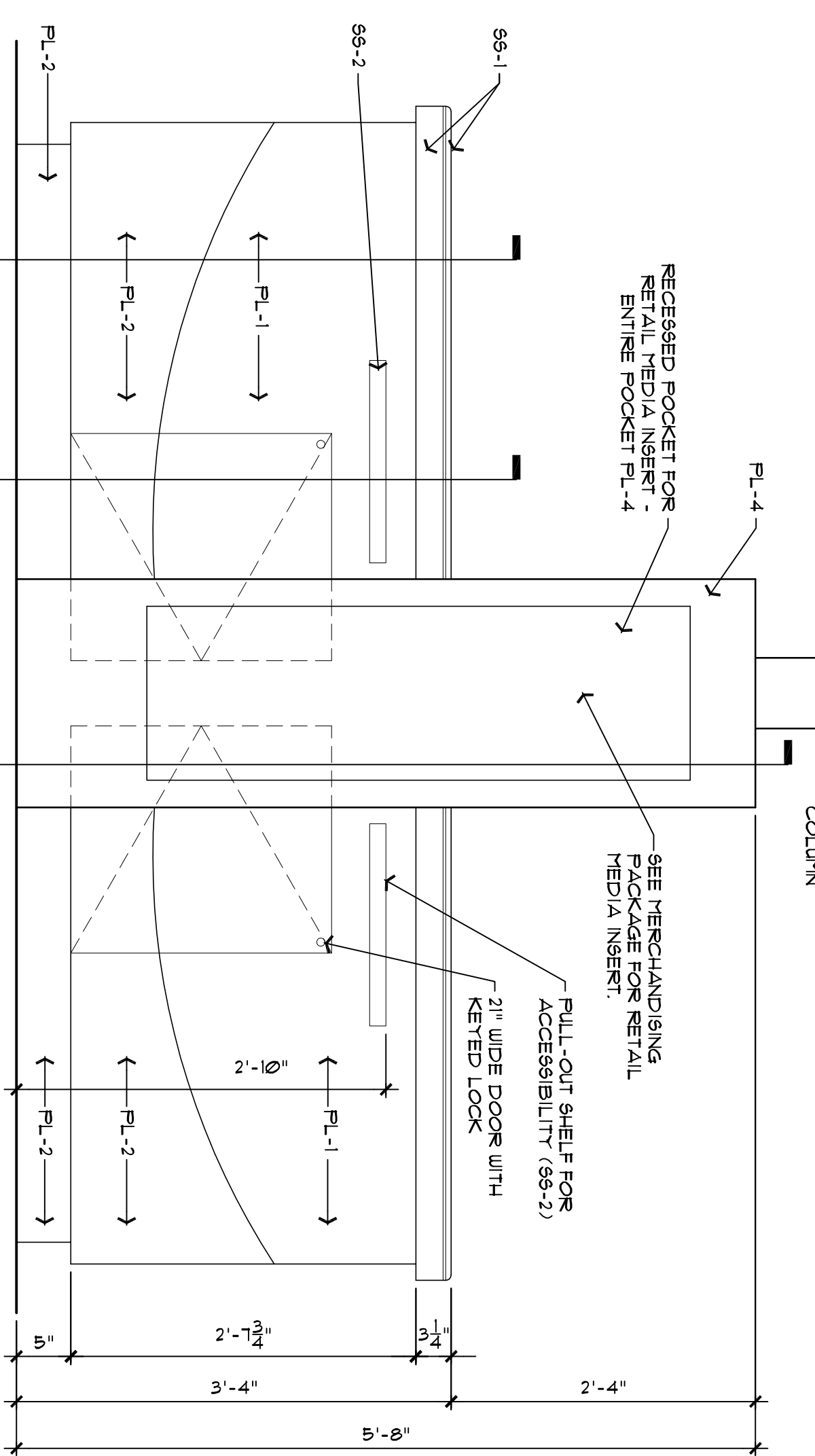


6 ELLIPSE LAYOUT LEVEL AT COUNTERTOP LEVEL
1/2" = 1'-0"

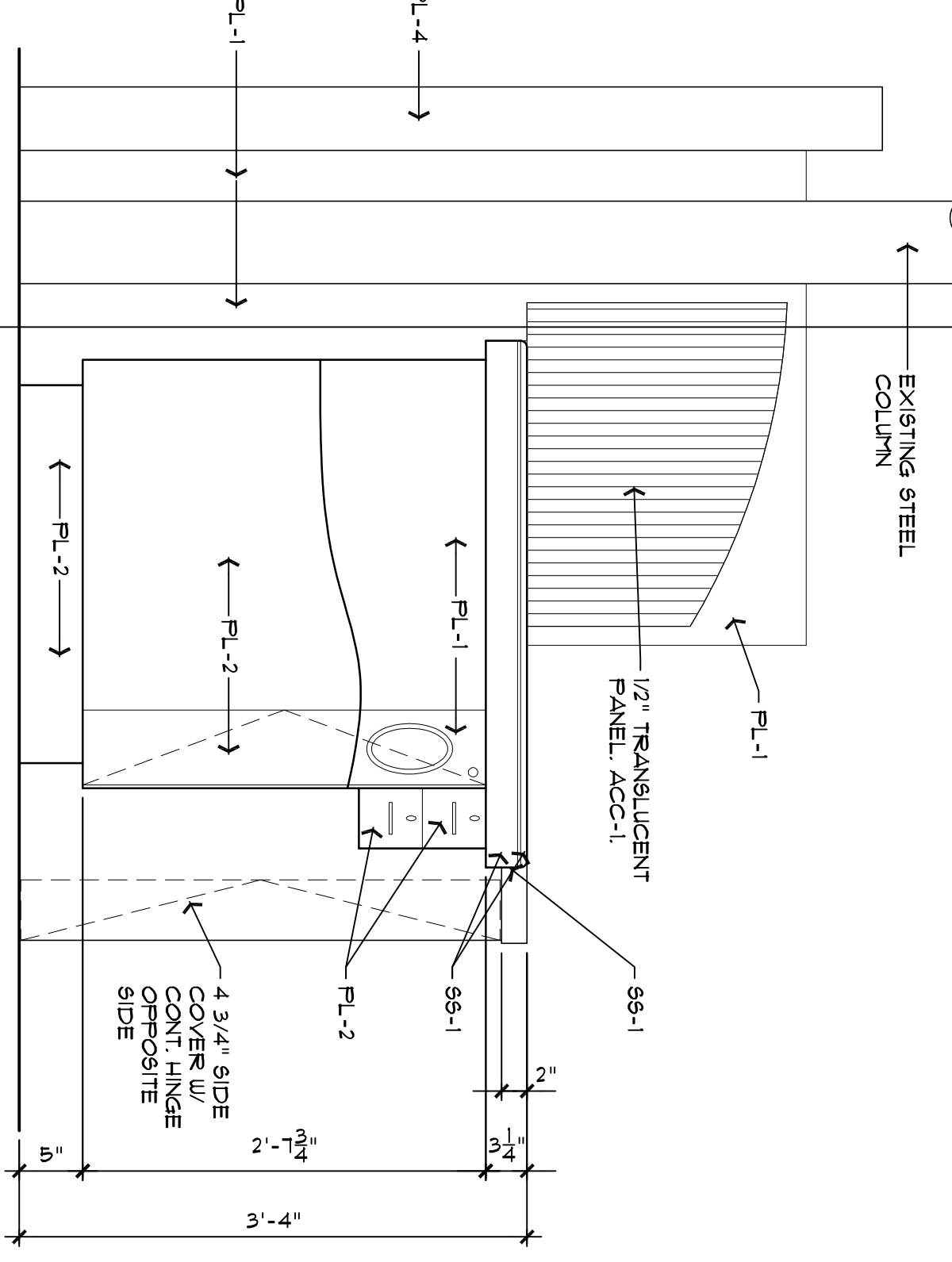
ALL SUBSTRATE WOOD PANELS TO BE MDF (MEDIUM DENSITY FIBERBOARD) UNLESS NOTIFIED OTHERWISE
VERIFY ALL EQUIPMENT DIMS W/ SPECS & MFG'S LITERATURE
PROVIDE BACKING SHIT ON BACK SIDE OF UP PLS & WHERE FRONT SIDES OF PLS ARE FACED W/ FLASTIC LAMINATE, TYP
INTERIOR OF CABINETS TO BE MELAMINE FINISH, COLOR BLACK (EXCEPT THAT CABT DOOR INTERIORS & EDGES TO MATCH EXTERIOR OF CABINET)
DRAWER SLIDERS TO BE HTL. ROLLER BEARING. SEE SPECS
LOCKS ON EITHER SIDE OF CASH DISPENSER SHALL BE KEYPED AND OPERATED IN EITHER AT EACH TELLER POSITION. THERE WILL BE 6 SETS OF KEYS FOR TELLER PODS.
VERIFY SIZE & CLEARANCES OF CASH MACHINE WITH OWNER BEFORE STARTING MACHINE LOCATION OF RECESSED TELLER MACHINE STAGE.

6 SECTION
1/8" = 1'-0"

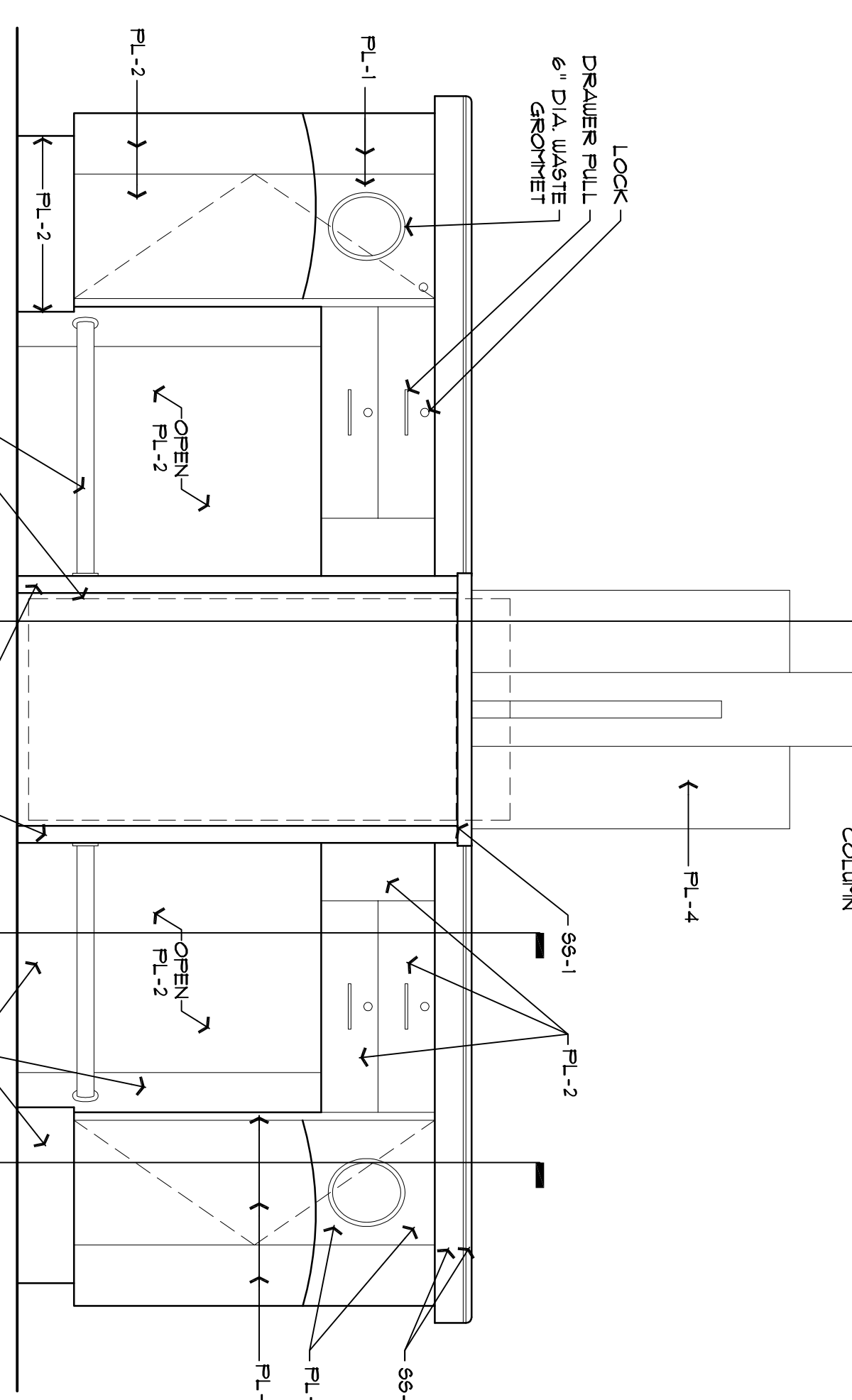
1 SECTION
1/8" = 1'-0"



9 TELLER POD FRONT ELEVATION
1/8" = 1'-0"



10 TELLER POD SIDE ELEVATION
1/8" = 1'-0"



11 TELLER POD REAR ELEVATION
1/8" = 1'-0"

Sheet IW6

TOWN & COUNTRY FCU
PORTLAND, MAINE

W.F. Cann Company P.C. Architect
15450 South Outer Forty Drive Suite 300 Chesterfield, MO 63017 636-898-8100

CONSULTANT
NewGround
15450 South Outer Forty Drive
Suite 300
Chesterfield, MO 63017
Area Code 636 898-8100

NEWGROUND
breakthrough
BEAS 1 SPACE 1 GROWTH