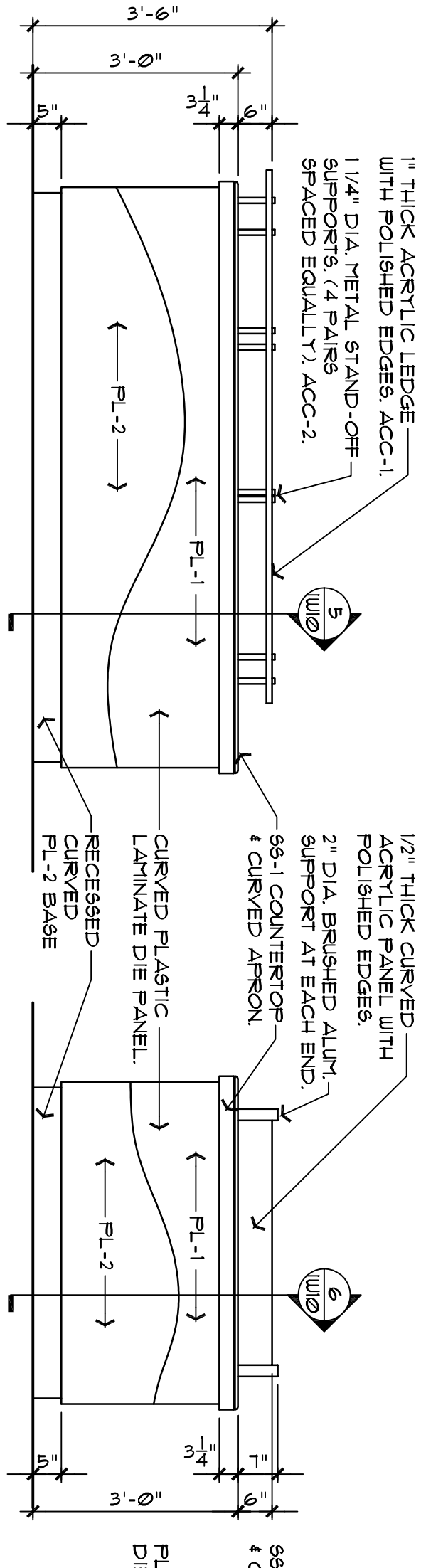
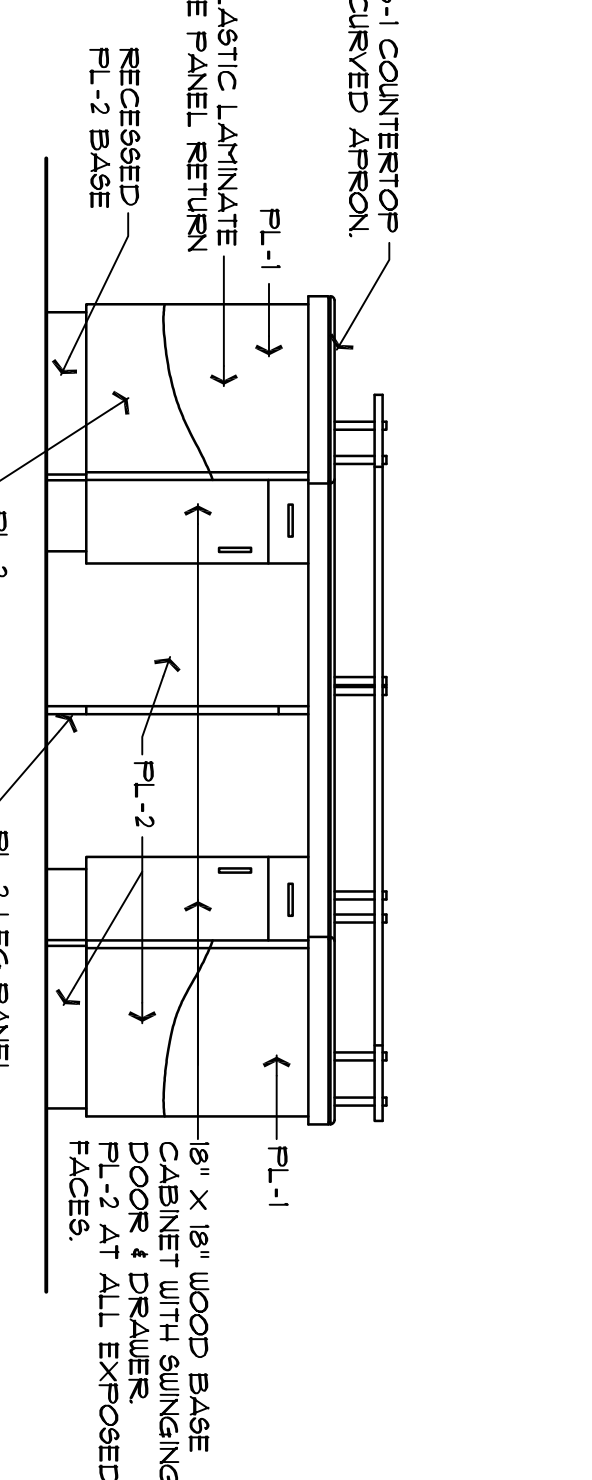


1 PLAN DETAIL AT GREETER COUNTER
SCALE 1/2" = 1'-0"

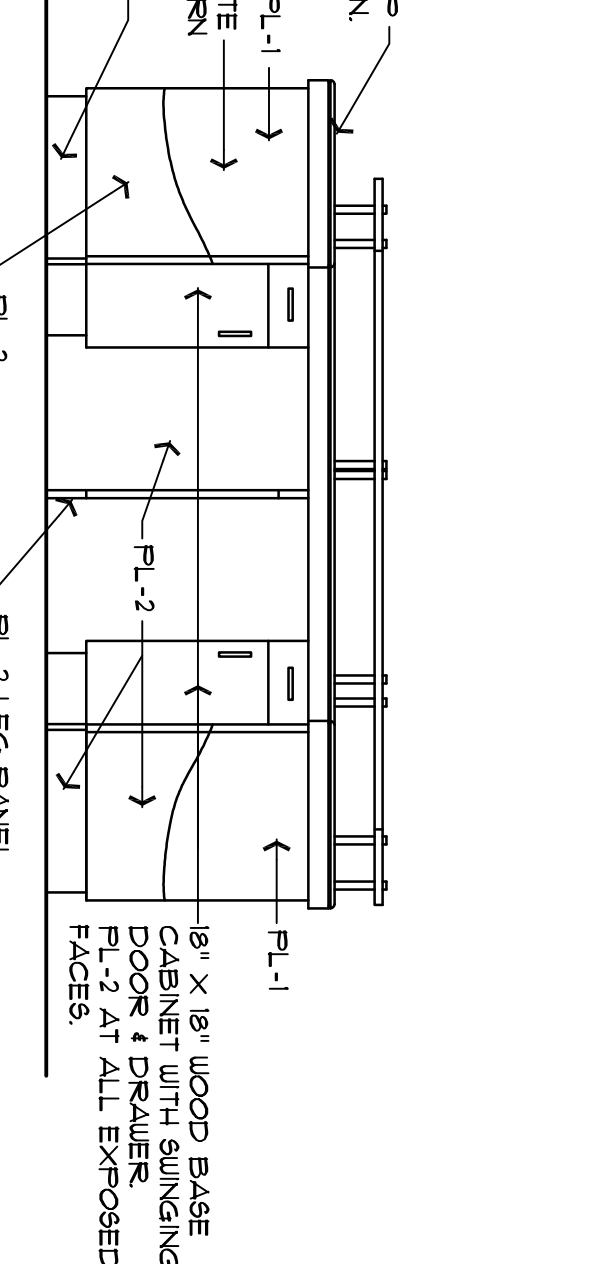


2 ELEVATION AT GREETER COUNTER
SCALE 1/2" = 1'-0"

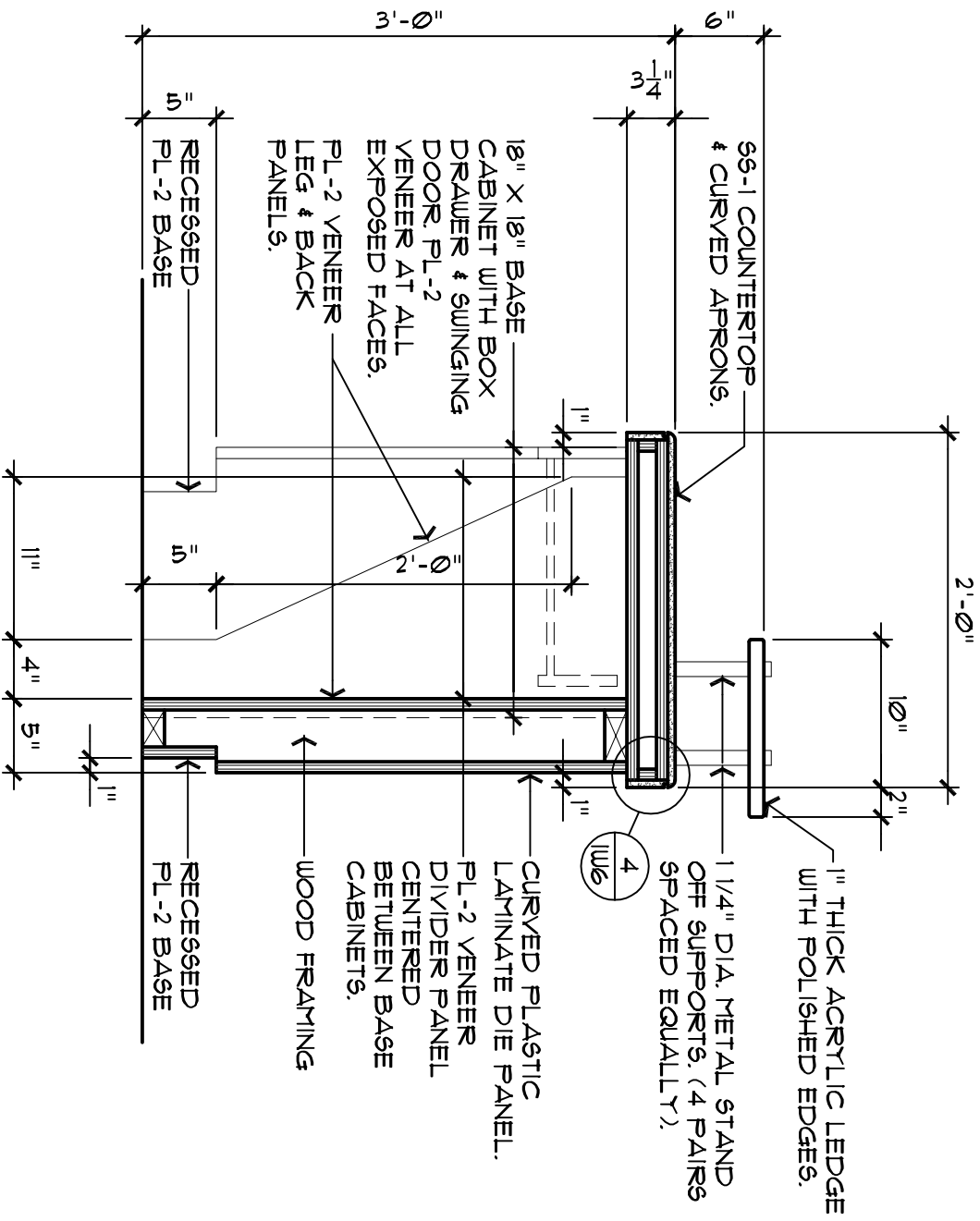
NOTE: WAVE LINE TO FLOW FROM MAIN GREETER TO BACK COUNTER TYPICAL.



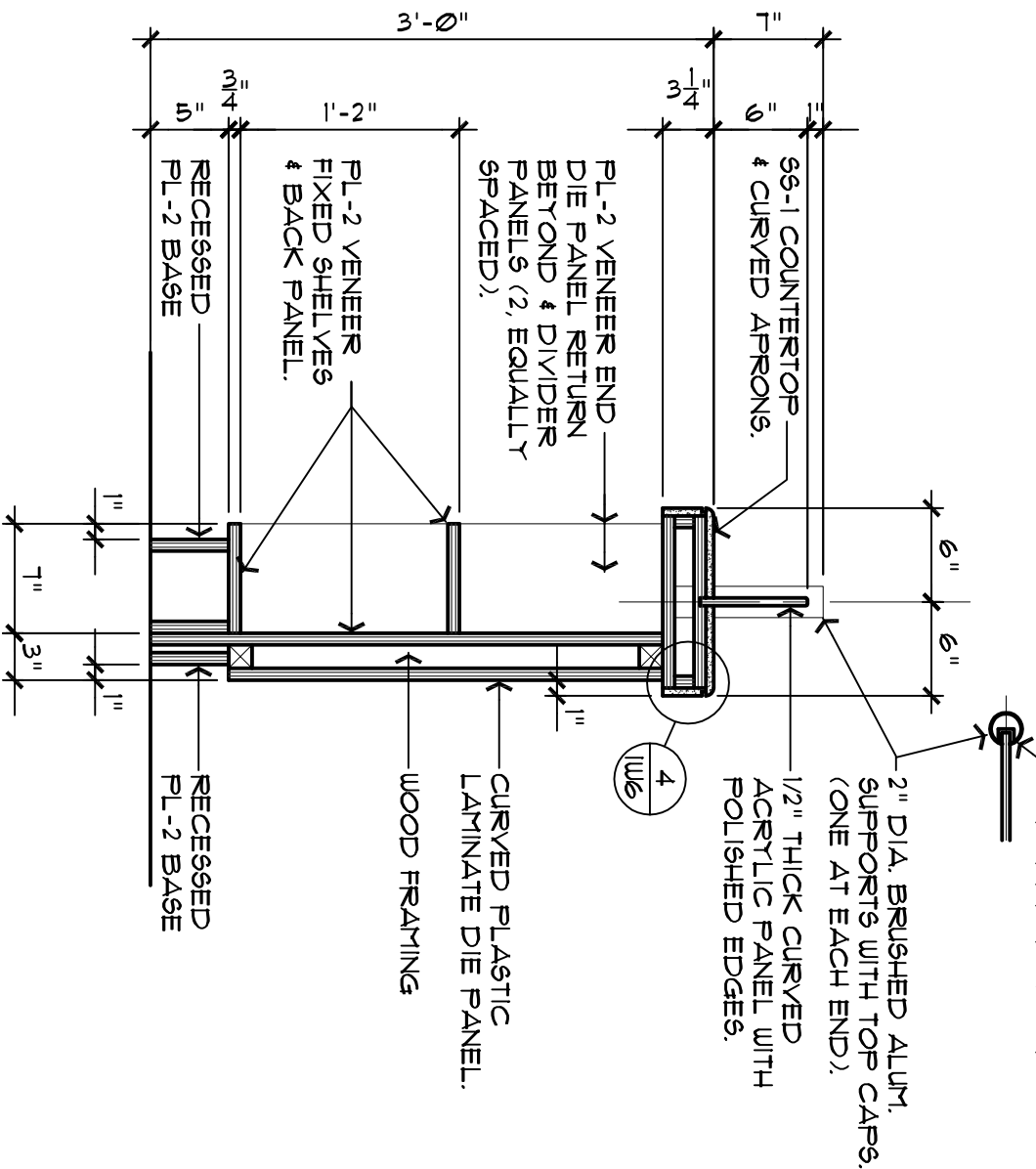
3 ELEVATION AT GREETER COUNTER
SCALE 1/2" = 1'-0"



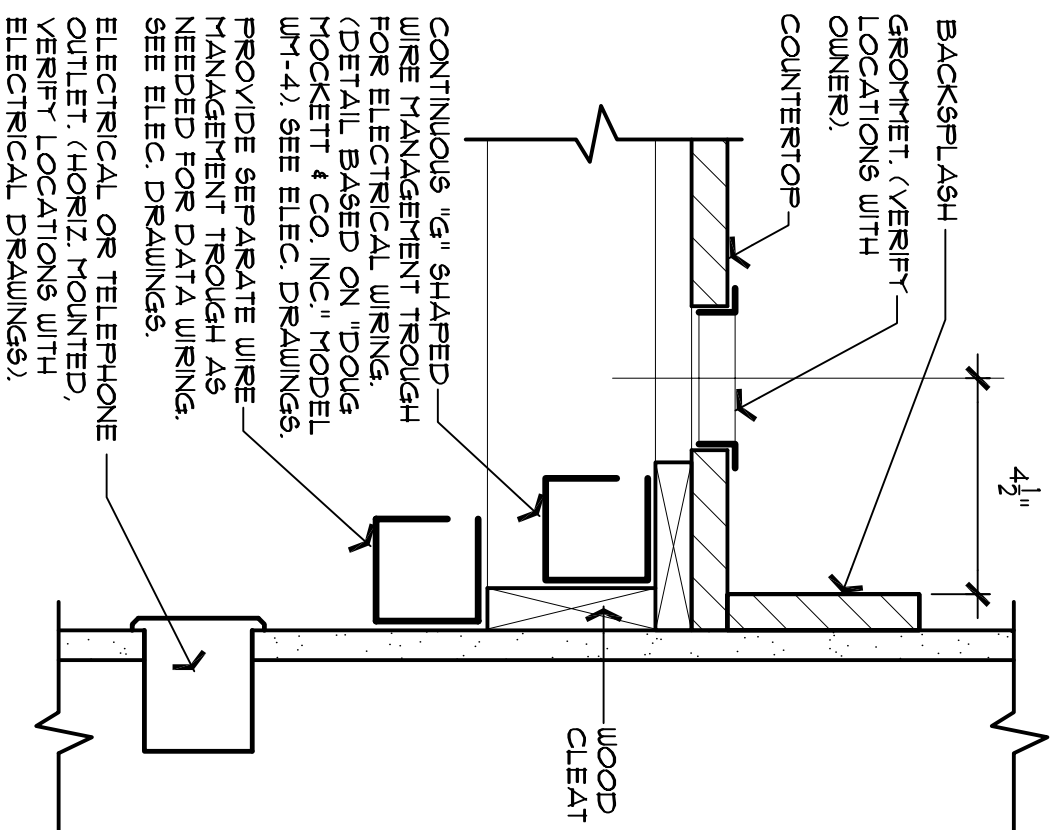
4 ELEVATION AT GREETER COUNTER
SCALE 1/2" = 1'-0"



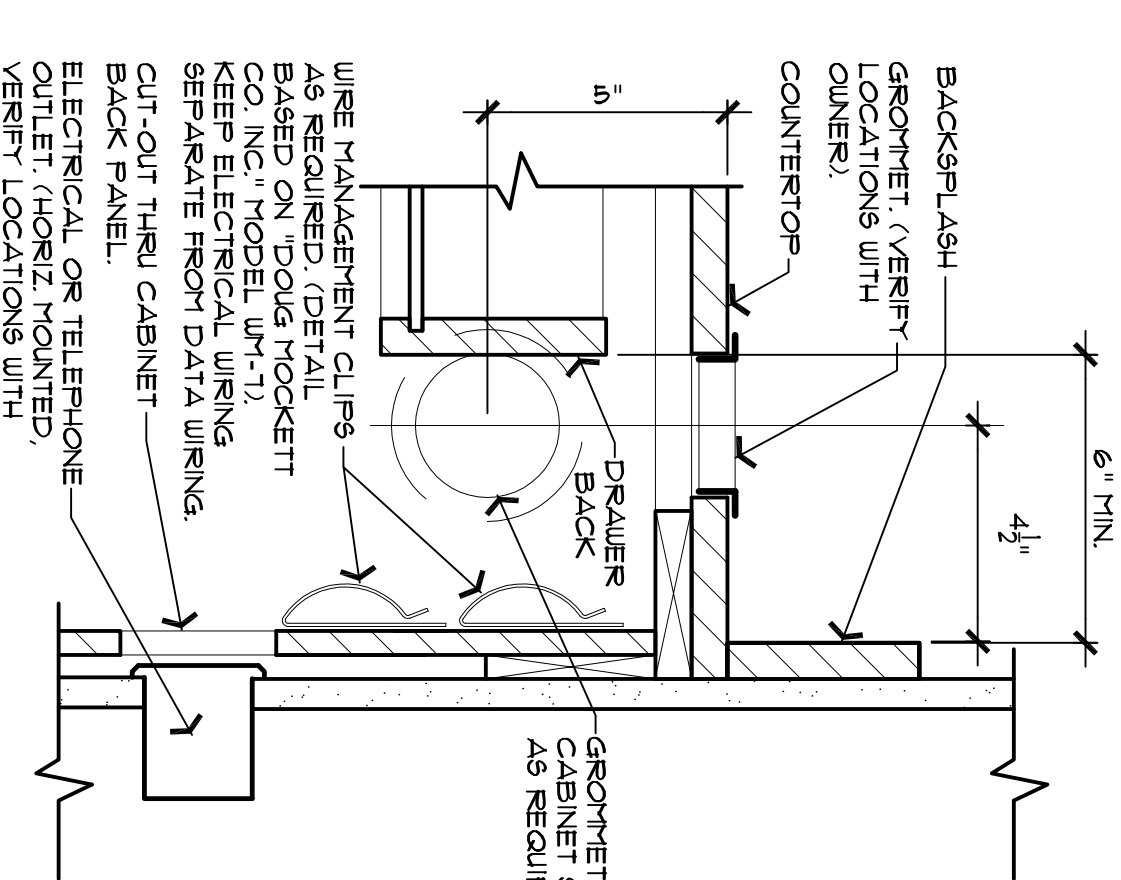
5 COUNTERWORK SECTION
SCALE 1" = 1'-0"



6 COUNTERWORK SECTION
SCALE 1" = 1'-0"



TYPICAL WIRE MANAGEMENT DETAIL
(AT COUNTERTOP KNEESPACE)
SCALE 3" = 1'-0"



TYPICAL WIRE MANAGEMENT DETAIL
(AT INTERIOR OF BASE CABINET)
SCALE 3" = 1'-0"

GENERAL NOTES:
FIELD VERIFY ALL WALL DIMENSIONS.
VERIFY ALL EQUIPMENT & APPLIANCE DIMENSIONS WITH SPECIFICATIONS & MFRS. LITERATURE.
WOOD CLEATS TO BE PAINTED TO MATCH ADJACENT WALL.
PROVIDE BACKING SHEET ON BACK SIDE OF WOOD PANELS WHERE FRONT SIDES OF PANELS ARE FACED WITH PLASTIC LAMINATE TYPICAL.
ALL SUBSTRATE WOOD PANELS TO BE MDF.
INTERIOR OF CABINETS INCLUDING SHELVES TO BE MELAMINE FINISH COLOR - BLACK (EXCEPT THAT CABINET DOOR INTERIORS & EDGES TO MATCH EXTERIOR OF CABINET).
ALL PLASTIC LAMINATE OR WOOD VENEER GRAIN ON VERTICAL SURFACES TO RUN VERTICALLY (WOOD GRAIN TO RUN CONTINUOUSLY OVER DOOR & DRAWER FRONTS).
PROVIDE GROOVETS AS DIRECTED BY OWNER.

Do Not Reproduce
This document contains confidential information, is an instrument of service and property of the architect. It shall not be used on other projects or for the extension of this project without the Architect's written approval.

W.F. Cann Company P.C. Architect
15450 South Outer Forty Drive Suite 300 Chesterfield, MO 63017 636-898-8100

CONSULTANT
NewGround
15450 South Outer Forty Drive
Suite 300
Chesterfield, MO 63017
Area Code 636 898-8100

NEWGROUND
breakthrough
BEAS | SPACE | GROWTH