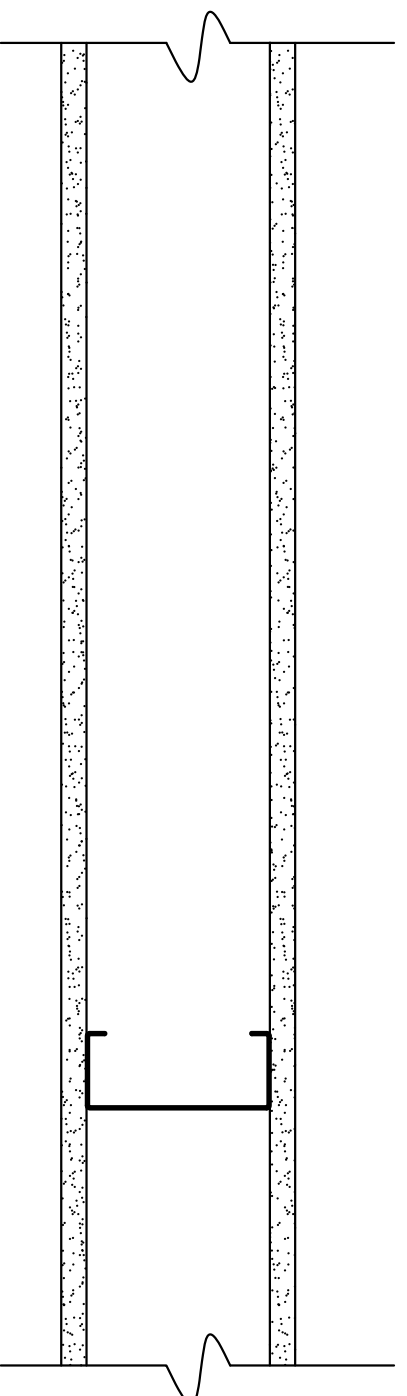


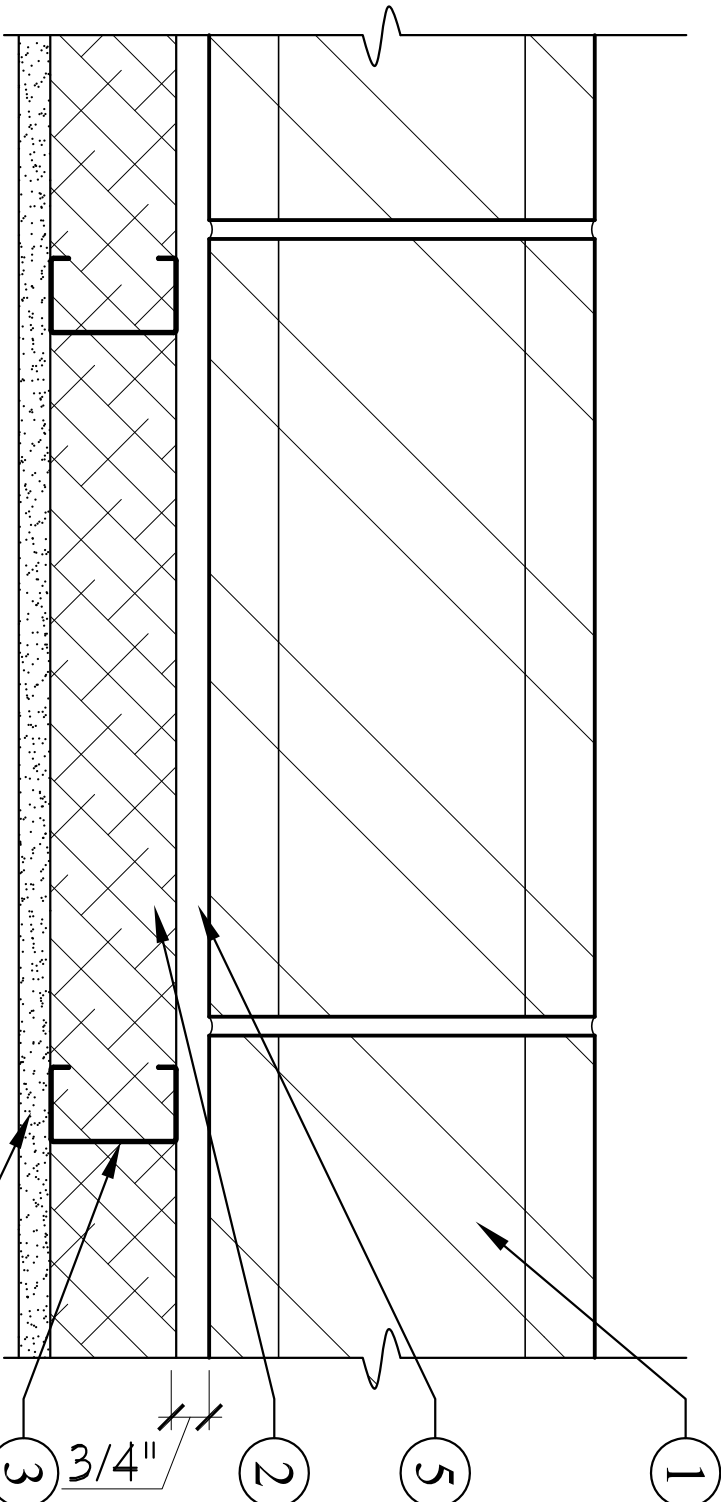
WALL TYPES



W1 DWELLING UNIT PARTITION WALL ASSEMBLY

GA FILE NO. U9P 1072 GENERIC 1 HOUR FIRE
45 to 49 STC SOUND
Thickness: 4 7/8"
Approx. Weight: 6 per
Fire Test: See U9P 1350
FRM U9P-45, 6-19-60s
OSU T-1170, 8-61s
ULC 191404, 191500, 191491,
8-12-81
ULC Design (415)
Sound Test: NRCC 816-NV, 2-3-81
GYPFULT WALLBOARD, STEEL STUDS
One layer 5/8" type X gypsum wallboard or gypsum veneer base applied parallel or at right
angles to each side of 35/8" steel studs 24" o.c. with 1" Type S drywall screws 8" o.c. at
vertical joints and 12" o.c. at floor and ceiling runners and intermediate studs.
Joints staggered 24" on each side and on opposite sides. Sound tested with 3 1/2" glass fiber
friction fit in stud space. (NLB)

W1 TYPICAL 1 HOUR INTERIOR PARTITION

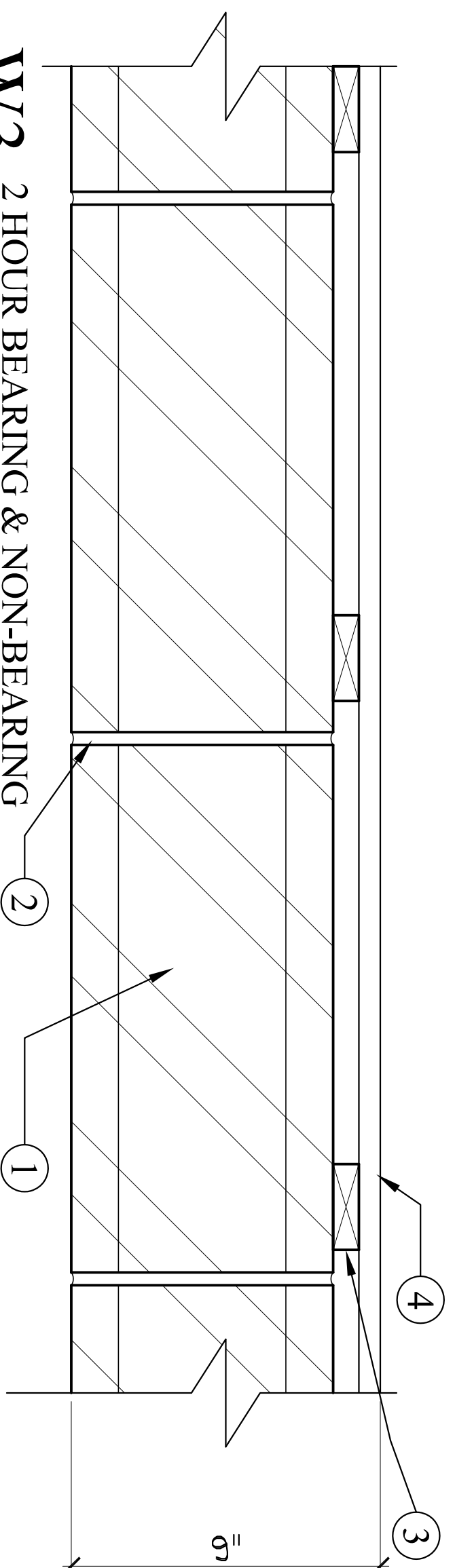


W2 NEW INSULATING WALL ON EXIST EXT WALL

W2 NEW INSULATING WALL OVER EXIST EXTERIOR WALL

DESIGN NUMBER U.L. U905

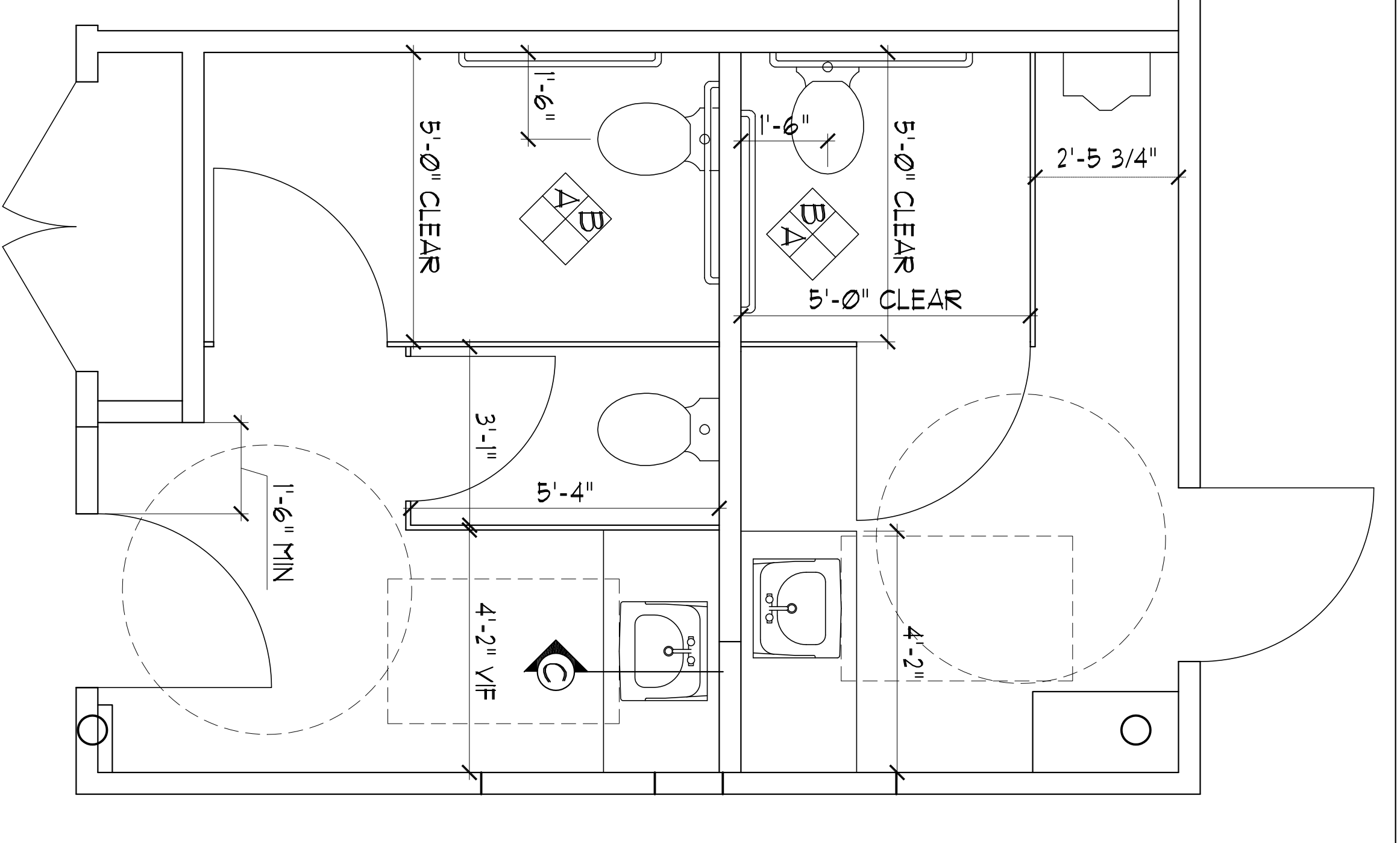
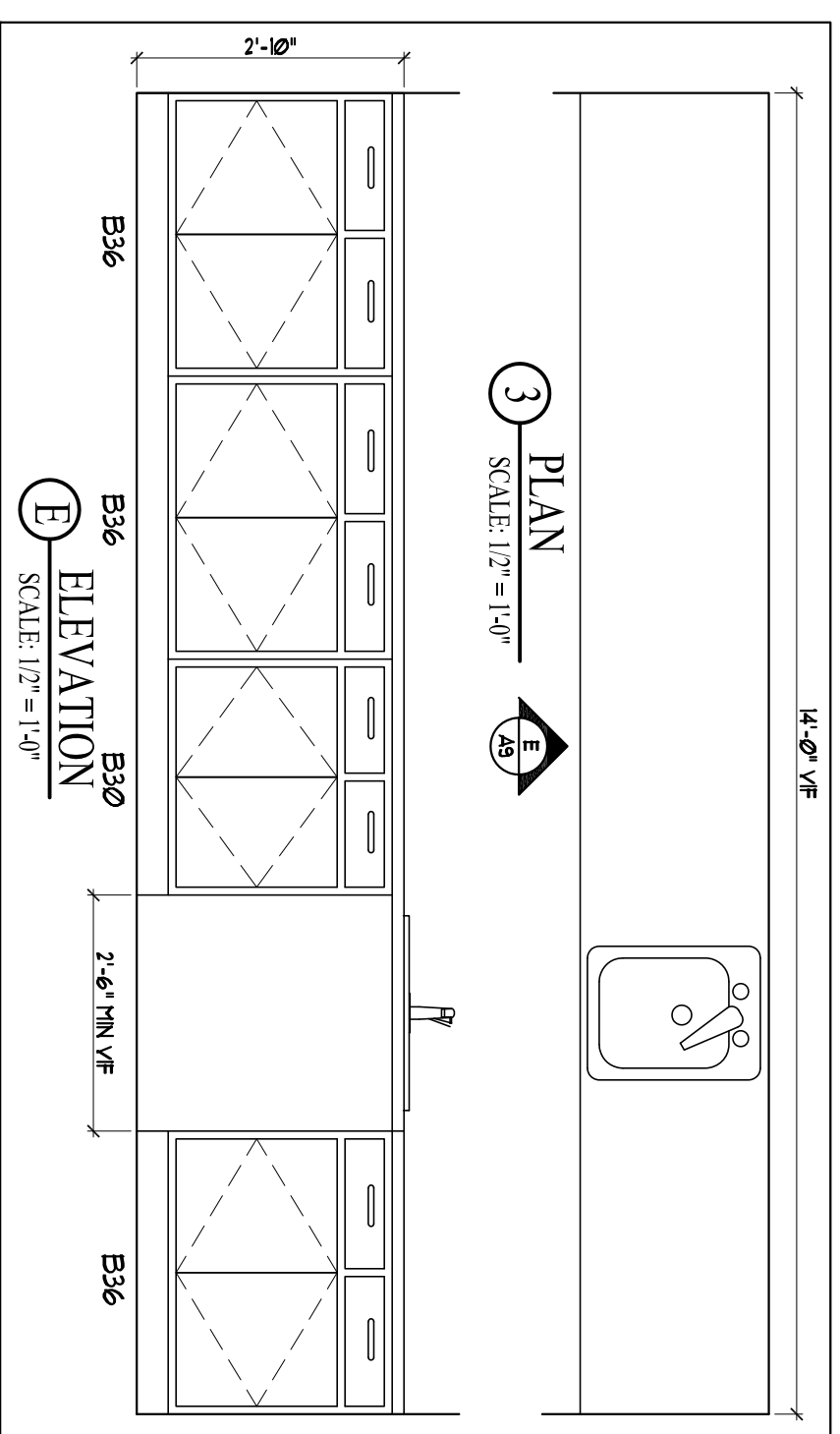
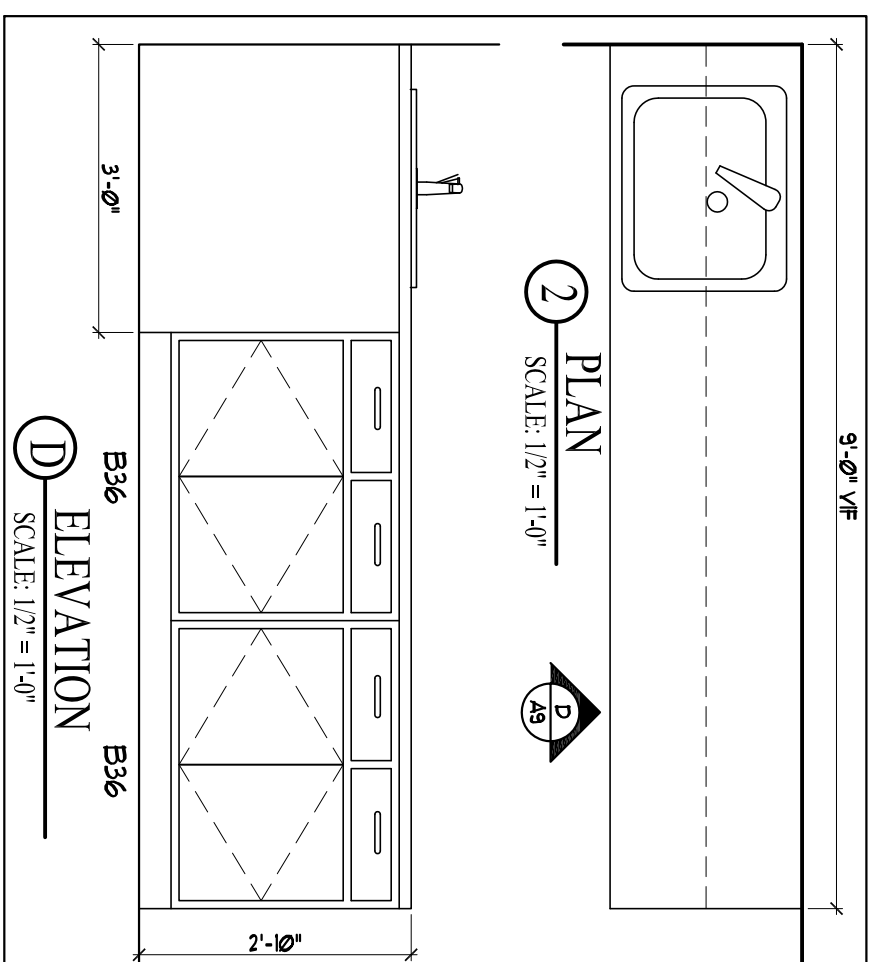
1. **Exist CMU Wall**
2. 3" foamed insulation
3. 2 1/2" 25 gauge metal studs
4. **Gypsum Board** -- 5/8 in. thick, 4 ft wide, attached to mt studs
5. Existing Strapping



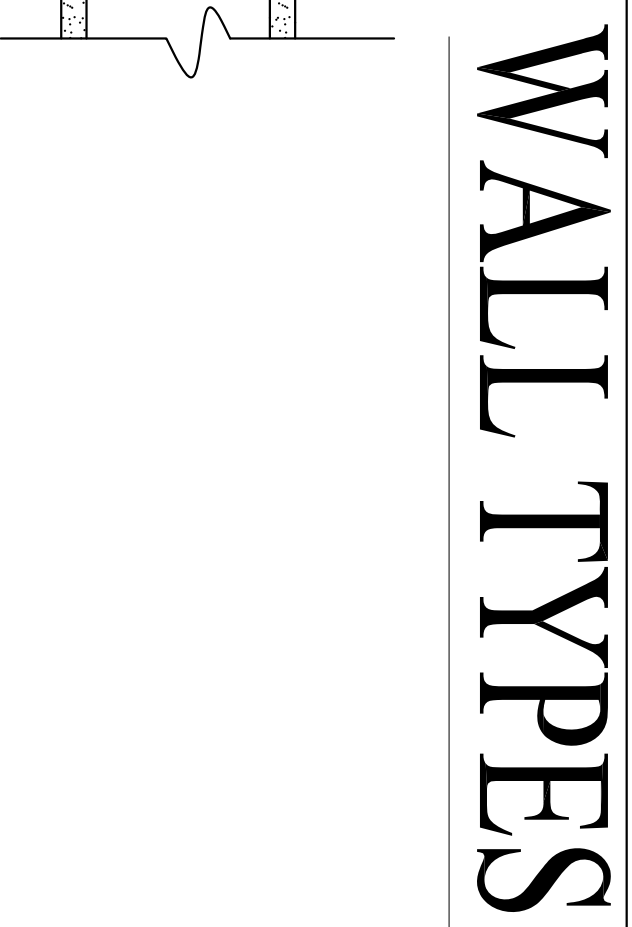
W3 2 HOUR BEARING & NON-BEARING
(1 HOUR REQUIRED)

W3 BEARING/NON-BEARING CMU WALL 2-HOUR
DESIGN NUMBER U.L. U905

1. **Concrete Blocks** - Classification D-2 (2 hr).
2. **Mortar** - Blocks laid in full bed of mortar, nom. 3/8 in. thick, of not less than 2-1/4 and not more than 3-1/2 parts of clean sharp sand to 1 part Portland cement (proportioned by volume) and not more than 50 percent hydrated lime (by cement volume). Vertical joints staggered.
3. **Strapping** - 1x3 Wood Strapping (**ADDED**)
4. **Finish** - 5/8" Gypsum Board or 5/8" Exterior Gypsum Board (**ADDED**)



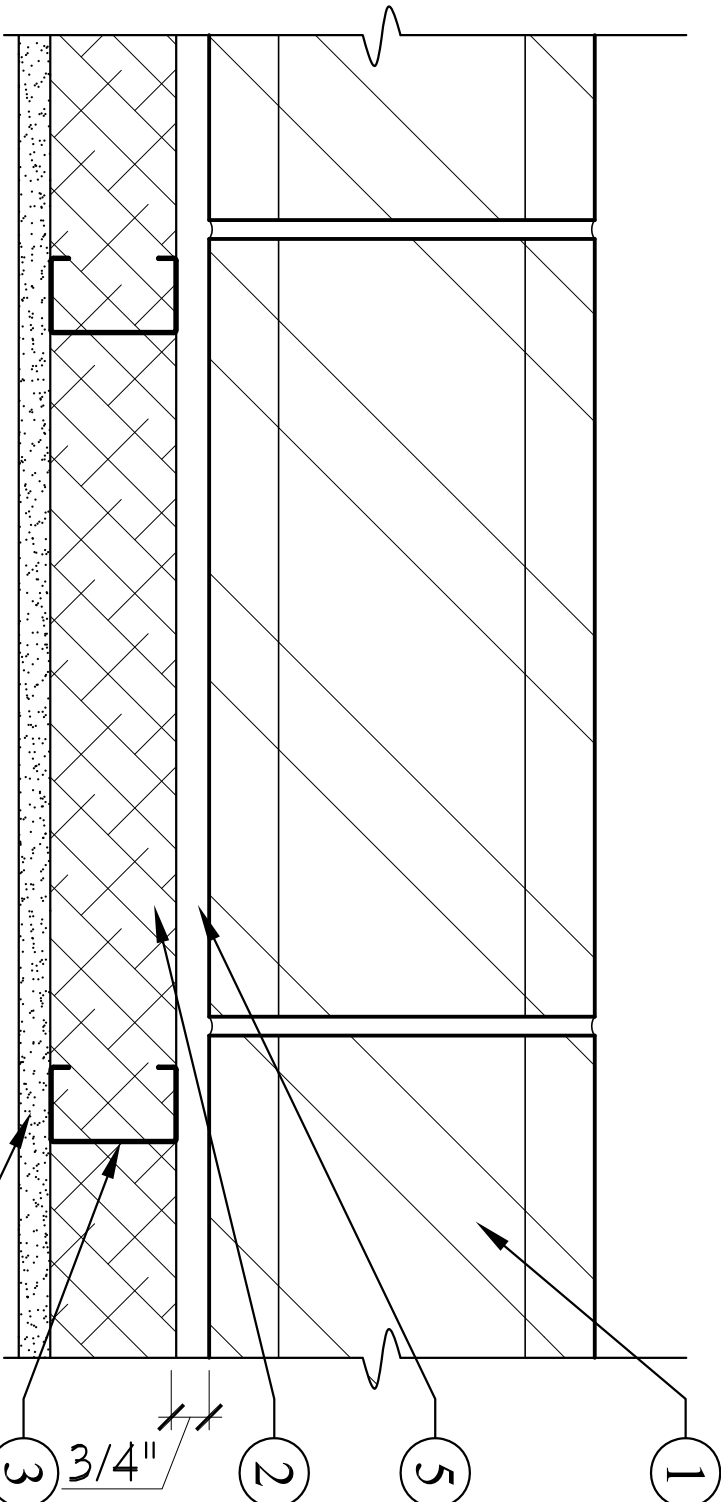
1 FIRST FLOOR BATHROOM PLAN
SCALE: 1/4" = 1'-0"



W1 DWELLING UNIT PARTITION WALL ASSEMBLY

GA FILE NO. U9P 1072 GENERIC 1 HOUR FIRE
45 to 49 STC SOUND
Thickness: 4 7/8"
Approx. Weight: 6 per
Fire Test: See U9P 1350
FRM U9P-45, 6-19-60s
OSU T-1170, 8-61s
ULC 191404, 191500, 191491,
8-12-81
ULC Design (415)
Sound Test: NRCC 816-NV, 2-3-81
GYPFULT WALLBOARD, STEEL STUDS
One layer 5/8" type X gypsum wallboard or gypsum veneer base applied parallel or at right
angles to each side of 35/8" steel studs 24" o.c. with 1" Type S drywall screws 8" o.c. at
vertical joints and 12" o.c. at floor and ceiling runners and intermediate studs.
Joints staggered 24" on each side and on opposite sides. Sound tested with 3 1/2" glass fiber
friction fit in stud space. (NLB)

W1 TYPICAL 1 HOUR INTERIOR PARTITION

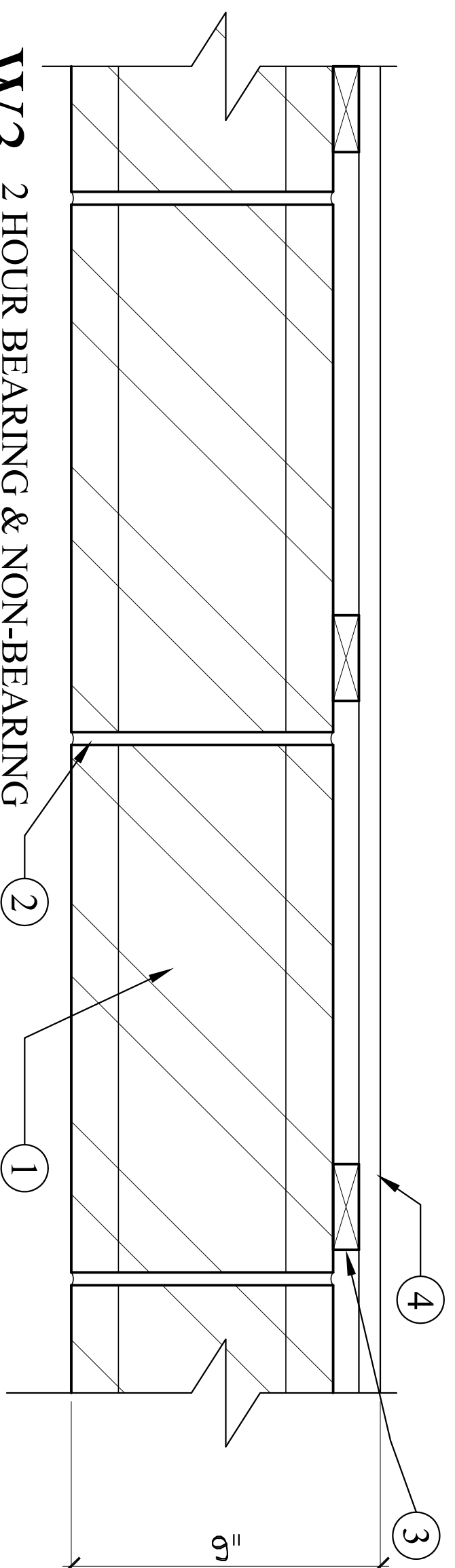


W2 NEW INSULATING WALL ON EXIST EXT WALL

W2 NEW INSULATING WALL OVER EXIST EXTERIOR WALL

DESIGN NUMBER U.L. U905

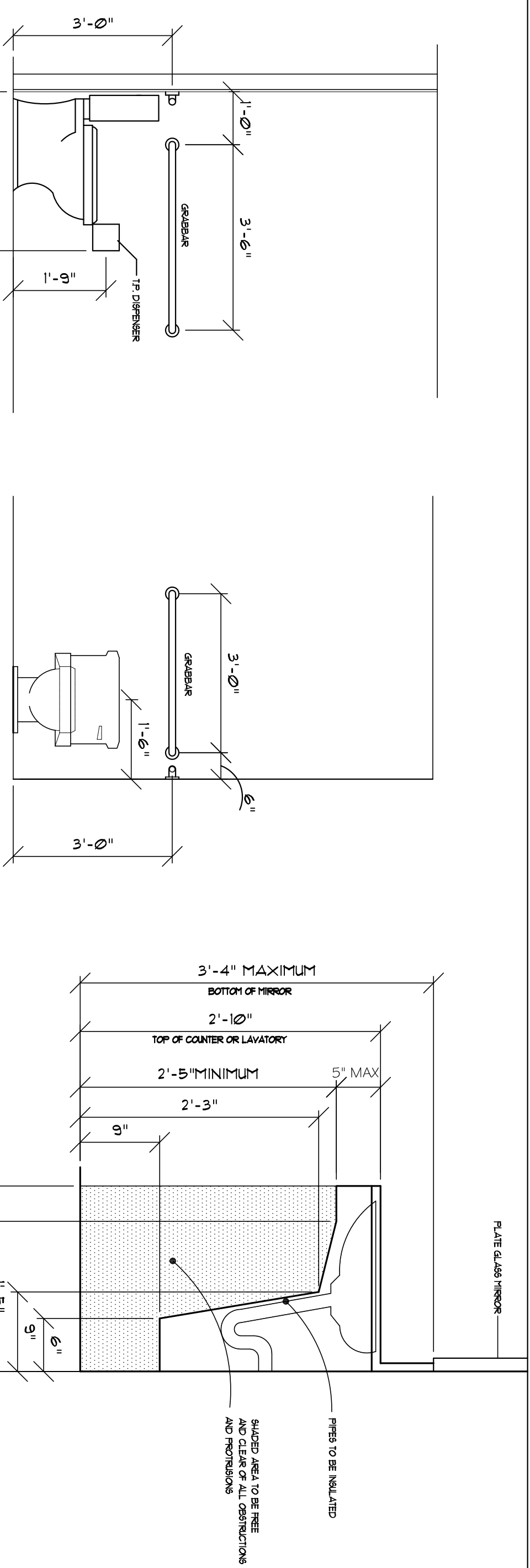
1. **Exist CMU Wall**
2. 3" foamed insulation
3. 2 1/2" 25 gauge metal studs
4. **Gypsum Board** -- 5/8 in. thick, 4 ft wide, attached to mt studs
5. Existing Strapping



W3 2 HOUR BEARING & NON-BEARING
(1 HOUR REQUIRED)

W3 BEARING/NON-BEARING CMU WALL 2-HOUR
DESIGN NUMBER U.L. U905

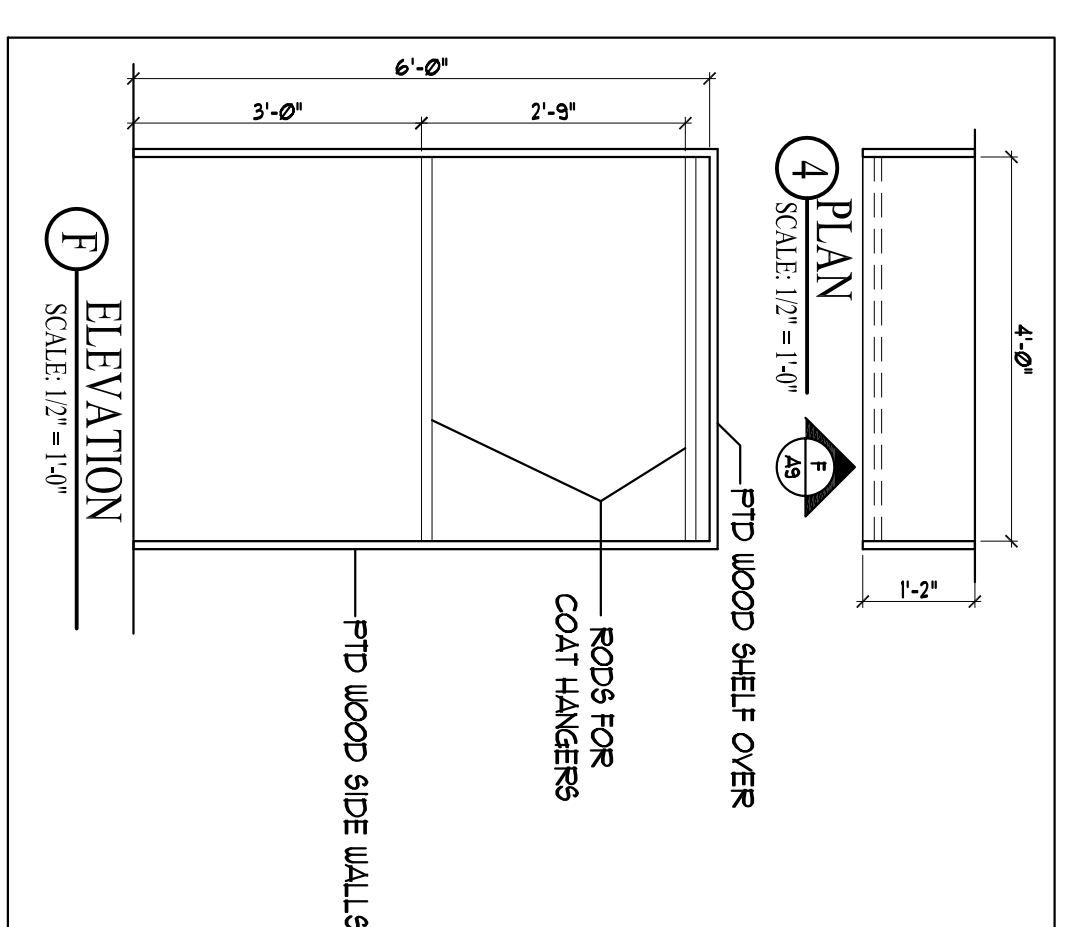
1. **Concrete Blocks** - Classification D-2 (2 hr).
2. **Mortar** - Blocks laid in full bed of mortar, nom. 3/8 in. thick, of not less than 2-1/4 and not more than 3-1/2 parts of clean sharp sand to 1 part Portland cement (proportioned by volume) and not more than 50 percent hydrated lime (by cement volume). Vertical joints staggered.
3. **Strapping** - 1x3 Wood Strapping (**ADDED**)
4. **Finish** - 5/8" Gypsum Board or 5/8" Exterior Gypsum Board (**ADDED**)



A ELEVATION
SCALE: 1/2" = 1'-0"

B ELEVATION
SCALE: 1/2" = 1'-0"

C SECTION
SCALE: 1" = 1'-0"



G PLAN
SCALE: 1/2" = 1'-0"

H ELEVATION
SCALE: 1/2" = 1'-0"

WALL TYPES & KITCHEN & BATHROOM DETAILS

Project:

TOWN & COUNTRY
426 FOREST AVENUE
PORTLAND, MAINE

Date
26 APRIL 2010

Scale
1/4" = 1'-0"

ARCHETYPE, P.A. ARCHITECTS

48 Union Wharf Portland, Maine 04101
(207) 772-6022 Fax (207) 772-4056

Prepared for:

A9