

DEMOLITION NOTES

1. COMPLY WITH APPLICABLE LOCAL, STATE AND FEDERAL CODES AND REGULATIONS PERTAINING TO SAFETY OF PERSONS, PROPERTY AND ENVIRONMENTAL PROTECTION.
2. PROVIDE AND MAINTAIN BARRICADES, LIGHTING, AND GUARDRAILS AS REQUIRED BY APPLICABLE CODES AND REGULATIONS TO PROTECT OCCUPANTS OF BUILDING AND WORKERS.
3. IF DEMOLITION IS PERFORMED IN EXCESS OF THAT REQUIRED, RESTORE EFFECTED AREAS AT NO COST TO THE OWNER.
4. REMOVE FROM SITE DAILY AND LEGALLY DISPOSE OF REFUSE, DEBRIS, RUBBISH, AND OTHER MATERIALS RESULTING FROM DEMOLITION OPERATIONS.
5. REMOVE DESIGNATED COMPONENTS, BUILDING EQUIPMENT, AND FIXTURES AS REQUIRED FOR NEW WORK.
6. REMOVE ABANDONED ELECTRICAL, TELEPHONE AND DATA CABLING AND DEVICES, UNLESS OTHERWISE NOTED.

POWER AND COMMUNICATION NOTES

1. PRIOR TO CORING SLAB, REVIEW LOCATIONS WITH ARCHITECT AND COORDINATE LOCATIONS WITH OWNER.
2. COORDINATE INSTALLATION OF TELECOMMUNICATIONS, DATA AND SECURITY SYSTEMS.
3. VERIFY EQUIPMENT SPECIFICATIONS, POWER AND INSTALLATION REQUIREMENTS WITH MANUFACTURER TO ENSURE PROPER FIT AND FUNCTION.
4. VERIFY MOUNTING REQUIREMENTS OF ELECTRICAL, TELEPHONE AND OTHER EQUIPMENT.

FINISH NOTES

1. ENSURE SURFACES TO RECEIVE FINISHES ARE CLEAN, TRUE, AND FREE OF IRREGULARITIES. DO NOT PROCEED WITH WORK UNTIL UNSATISFACTORY CONDITIONS HAVE BEEN CORRECTED.
2. REPAIR EXISTING SURFACES TO REMAIN AS REQUIRED FOR APPLICATION OF NEW FINISHES.

DISABLED ACCESS NOTES

1. ALL ACCESSIBLE TELLER MACHINES SHALL COMPLY WITH ANSI A117.1, LATEST EDITION, FOR ACCESSIBILITY.
2. CLEAR FLOOR SPACE IN FRONT OF ACCESSIBLE TELLER MACHINE SHALL COMPLY WITH SECTION 707.2 OF ANSI A117.1, LATEST EDITION, FOR ACCESS TO EQUIPMENT.
3. OPERABLE PARTS OF ACCESSIBLE TELLER MACHINES SHALL COMPLY WITH SECTION 707.3 OF ANSI A117.1, LATEST EDITION, FOR DIFFERENTIATION BY SOUND AND TOUCH.
4. NUMERIC KEYS OF ACCESSIBLE TELLER MACHINES SHALL COMPLY WITH 707.5 OF ANIS A117.1, LATEST EDITION, FOR ARRANGEMENT AND DETECTION.
5. FUNCTION KEYS OF ACCESSIBLE TELLER MACHINES SHALL COMPLY WITH 707.6 OF ANSI A117.1, LATEST EDITION, FOR TACTILE AND CONTRAST ACCESSIBILITY.
6. DISPLAY SCREEN OF ACCESSIBLE TELLER MACHINES SHALL COMPLY WITH SECTION 707.7 OF ANSI A117.1, LATEST EDITION, FOR VISIBILITY AND CHARACTER DISPLAY.
7. INPUT CONTROLS OF ACCESSIBLE TELLER MACHINES SHALL COMPLY WITH SECTION 707.9 OF ANSI A117.1, LATEST EDITION, FOR TACTILE DISCERNABILITY.
8. BRAILLE INSTRUCTIONS FOR ACCESSIBLE TELLER MACHINES SHALL COMPLY WITH SECTION 707.10 OF ANSI A117.1, LATEST EDITION.

GENERAL NOTES

1. COMPLY WITH CODES, LAWS, ORDINANCES, RULES, AND REGULATIONS OF PUBLIC AUTHORITIES GOVERNING THE WORK.
2. OBTAIN AND PAY FOR PERMITS AND INSPECTIONS REQUIRED BY PUBLIC AUTHORITIES GOVERNING THE WORK.
3. REVIEW DOCUMENTS, VERIFY DIMENSIONS AND FIELD CONDITIONS AND CONFIRM THAT WORK IS BUILDABLE AS SHOWN. REPORT ANY CONFLICTS OR OMISSIONS TO THE ARCHITECT FOR CLARIFICATION PRIOR TO PERFORMING ANY WORK IN QUESTION.
4. SUBMIT REQUESTS FOR SUBSTITUTIONS, REVISIONS, OR CHANGES TO ARCHITECT FOR REVIEW PRIOR TO PURCHASE, FABRICATION OR INSTALLATION.
5. COORDINATE WORK WITH THE OWNER, INCLUDING SCHEDULING TIME AND LOCATIONS FOR DELIVERIES, BUILDING ACCESS, USE OF BUILDING SERVICES AND FACILITIES, AND USE OF ELEVATORS. MINIMIZE DISTURBANCE OF BUILDING FUNCTIONS AND OCCUPANTS.
6. OWNER WILL PROVIDE WORK NOTED "BY OTHERS" OR "NIC" UNDER SEPARATE CONTRACT. INCLUDE SCHEDULE REQUIREMENTS IN CONSTRUCTION PROGRESS SCHEDULE AND COORDINATE TO ASSURE ORDERLY SEQUENCE OF INSTALLATION
7. COORDINATE TELECOMMUNICATIONS, DATA AND SECURITY SYSTEM INSTALLATIONS.
8. MAINTAIN EXITS, EXIT LIGHTING, FIRE PROTECTIVE DEVICES, AND ALARMS IN CONFORMANCE WITH CODES AND ORDINANCES.
9. PROTECT AREA OF WORK AND ADJACENT AREAS FROM DAMAGE.
10. MAINTAIN WORK AREAS SECURE AND LOCKABLE DURING CONSTRUCTION. COORDINATE WITH TENANT AND LANDLORD TO ENSURE SECURITY.
11. DO NOT SCALE DRAWINGS. WRITTEN DIMENSIONS GOVERN. IN CASE OF CONFLICT, CONSULT THE ARCHITECT.
12. PARTITIONS ARE DIMENSIONED FROM FINISH FACE TO FINISH FACE, UNLESS OTHERWISE NOTED. MAINTAIN DIMENSIONS MARKED "CLEAR". ALLOW FOR THICKNESS OF FINISHES.
13. COORDINATE AND PROVIDE BACKING FOR MILLWORK AND ITEMS ATTACHED OR MOUNTED TO WALLS OR CEILINGS.
14. WHERE EXISTING ACCESS PANELS CONFLICT WITH CONSTRUCTION, RELOCATE PANELS TO ALIGN WITH AND FIT WITHIN NEW CONSTRUCTION.
15. UNDERCUT DOORS TO CLEAR TOP OF FLOOR FINISHES BY 1/4 INCH, UNLESS OTHERWISE NOTED.
16. G.C. SHALL PROVIDE ALL WORK RELATED TO ENGINEERING TO INCLUDE, BUT NOT LIMITED TO: STRUCTURAL, MECHANICAL, ELECTRICAL, FIRE PROTECTION & LIFE SAFETY. G.C. SHALL PROVIDE DESIGN DRAWINGS, PERMITS & INSTALLATION OF SYSTEMS ON A DESIGN BUILD BASIS.

FIRE DEPARTMENT NOTES

1. STORAGE, DISPENSING OR USE OF ANY FLAMMABLE OR COMBUSTIBLE LIQUIDS, FLAMMABLE GAS AND HAZARDOUS SUBSTANCES SHALL COMPLY WITH UNIFORM FIRE CODE REGULATIONS.
2. WOOD BLOCKING SHALL BE FIRE TREATED IN ACCORDANCE WITH APPLICABLE CODE REQUIREMENTS.
3. EXTEND OR MODIFY EXISTING FIRE/LIFE SAFETY SYSTEM AS REQUIRED TO PROVIDE AN APPROVED FIRE/LIFE SAFETY SYSTEM. SUBMIT PLANS TO FIRE DEPARTMENT WITH COMPLETE DESCRIPTION OF SEQUENCE OF OPERATION, AND OBTAIN APPROVAL PRIOR TO INSTALLATION.
4. EXTEND OR MODIFY EXISTING AUTOMATIC FIRE EXTINGUISHING SYSTEM AS REQUIRED TO PROVIDE AN APPROVED AUTOMATIC FIRE EXTINGUISHING SYSTEM. SUBMIT PLANS TO FIRE DEPARTMENT AND OBTAIN APPROVAL PRIOR TO INSTALLATION.
5. AUTOMATIC SPRINKLER SYSTEMS SHALL BE SUPERVISED BY AN APPROVED CENTRAL, PROPRIETARY OR REMOTE STATION SERVICE OR A LOCAL ALARM WHICH WILL GIVE AN AUDIBLE SIGNAL AT A CONSTANTLY ATTENDED LOCATION.

APPLICABLE CODES

BUILDING/DWELLING CODE:	2009 IBC & 2009 IEBC MAINE UNIFORM BUILDING AND ENERGY CODE 'MUBEC'
PLUMBING CODE:	ME STATE INTERNATIONAL PLUMBING CODE (UPC 2007)
MECHANICAL CODE:	ME STATE MECHANICAL CODE
ELECTRICAL CODE:	2NEC 2007 ELECTRICAL STANDARDS
FIRE/LIFE SAFETY CODE:	NFPA 2007 FIRE SAFETY CODES
ENERGY CODE:	2009 IECC MAINE UNIFORM BUILDING AND ENERGY CODE 'MUBEC'
ACCESSIBILITY CODE:	ADAAG

GRAPHIC SYMBOLS

CONSTRUCTION

	EXISTING CONSTRUCTION TO REMAIN
	EXISTING CONSTRUCTION TO BE DEMOLISHED
	NEW PARTITION
	1 HR. RATED PARTITION
	2 HR. RATED PARTITION
	3 HR. RATED PARTITION
	4 HR. RATED PARTITION
	SMOKE PARTITION
	EGRESS PATH PRIMARY
	EGRESS PATH SECONDARY

	DETAIL NUMBER
	SHEET NUMBER
	DESCRIPTION OF SIMILAR OR OPPOSITE FLOOR NUMBER AND AREA OR PHASE
	AREA TO BE DETAILED
	LOCATION ON ROW WHERE ELEVATION IS SHOWN
	DIRECTION OF ELEVATION
	ROW ON SHEET WHERE ELEVATION IS SHOWN
	SHEET NUMBER WHERE ELEVATION IS SHOWN
	REVISION REFERENCE NUMBER
	REVISION CLOUD DEPICTING ARE REVISED

ABBREVIATIONS

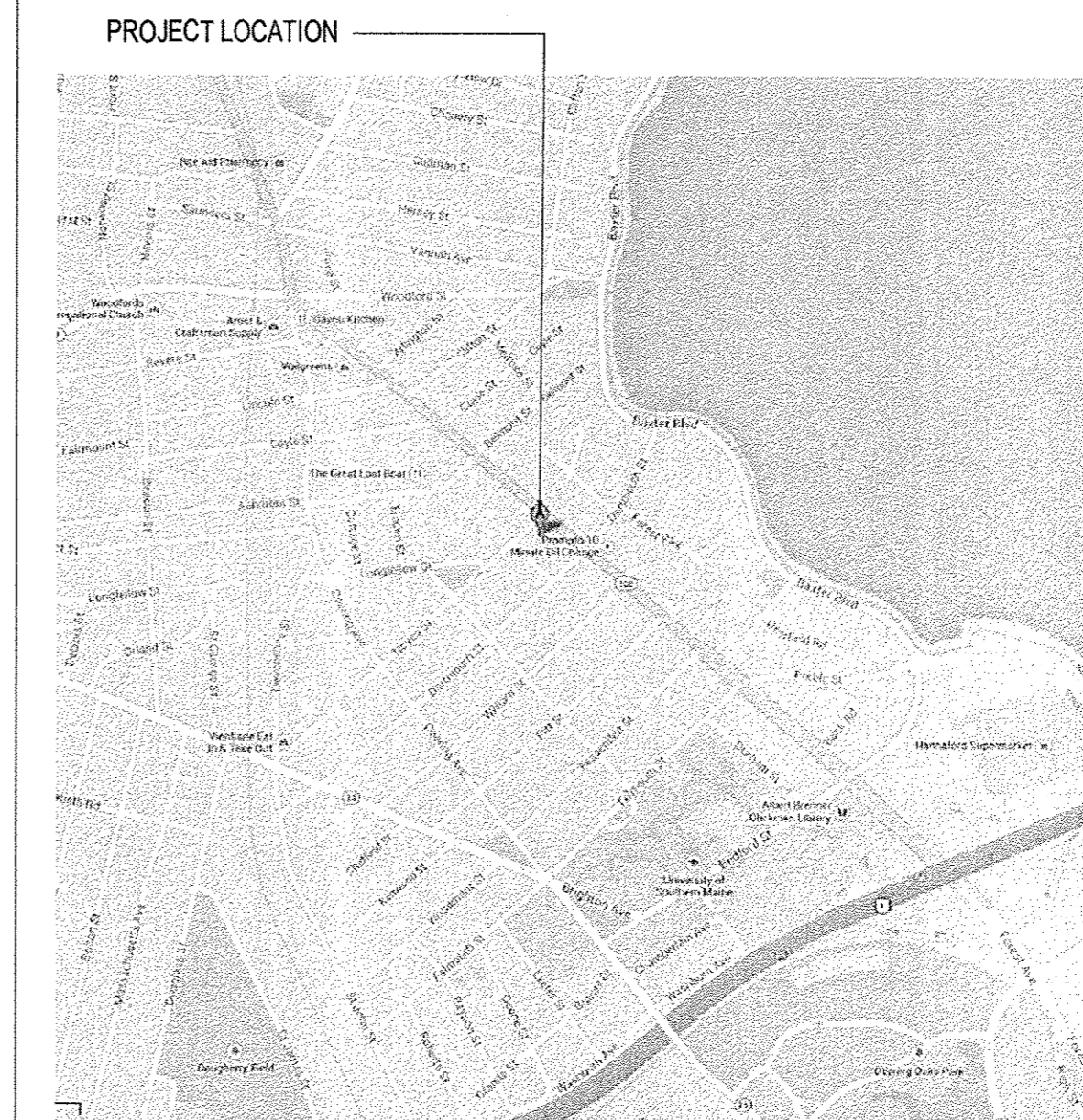
A		I	
AFF	ABOVE FINISHED FLOOR	INFO	INFORMATION
ALT	ALTERNATE	L	
ARCH	ARCHITECT(URAL)	LVLG	LEVELING
AVG	AVERAGE	M	
&	AND	MAX	MAXIMUM
B		MFD	MANUFACTURED
BLDG	BUILDING	MFR	MANUFACTURER
BOLLD	BOLLARD	MECH	MECHANICAL
BD	BOARD	MIN	MINIMUM
BLKG	BLOCKING	MISC	MISCELLANEOUS
C		MLWK	MILLWORK
CONC	CONCRETE	N	
CONSTR	CONSTRUCTION	NIC	NOT IN CONTRACT
CONT	CONTINUOUS(ATION)	NTS	NOT TO SCALE
CMU	CONCRETE MASONRY UNIT	P	
D		PLAM	PLASTIC LAMINATE
DEPT	DEPARTMENT	PLYWD	PLYWOOD
DIA	DIAMETER	R	
DIM	DIMENSION	REF	REFER(ENCE)
E		REQD	REQUIRED
ELEC	ELECTRICAL	S	
ENGR	ENGINEER(ED)	SF	SQUARE FEET
EQ	EQUAL	SIM	SIMILAR
EQUIP	EQUIPMENT	STD	STANDARD
EXIST	EXISTING	T	
EXT	EXTERIOR	TYP	TYPICAL
F		U	
FE	FIRE EXTINGUISHER	UNO	UNLESS NOTED OTHERWISE
FEC	FIRE EXTINGUISHER AND CABINET	V	
FIN	FINISH	VIF	VERIFY IN FIELD
G		W	
GYP	GYPSUM	W/	WITH
H		WD	WOOD
HVAC	HEATING, VENTILATING, AND AIR CONDITIONING	W/O	WITHOUT

DRAWING INDEX

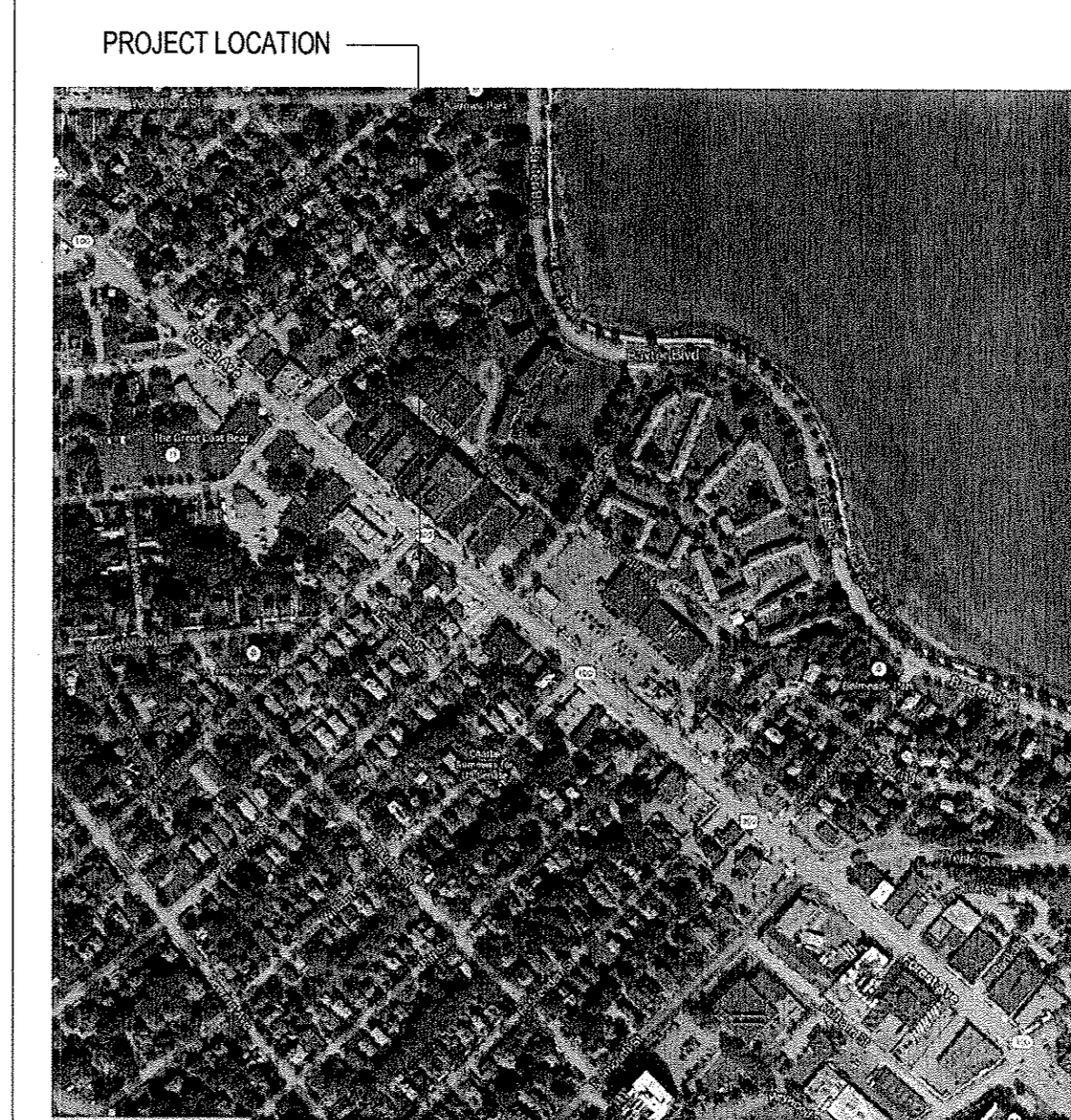
ARCHITECTURAL

A00.00	DRAWING INDEX, VICINITY MAP, LOCATION MAP & PROJECT INFORMATION, GRAPHICS SYMBOLS, ABBREVIATIONS AND GENERAL NOTES
A01.01	SITE PLAN, DEMOLITION PLAN
A02.01	CONSTRUCTION PLAN, REFLECTED CEILING PLAN & FINISH PLAN
A12.00	TYPICAL DETAILS
A13.00	EXISTING CONDITIONS PHOTOS

VICINITY MAP



LOCATION MAP



PROJECT INFORMATION

BUILDING ADDRESS:	500 FOREST AVENUE PORTLAND, ME 04101
OCCUPANCY TYPE:	BUSINESS GROUP B
PROJECT DESCRIPTION:	ATM INSTALLATION
PROJECT SQUARE FOOTAGE:	500 SF

Bank of America ATM Installation

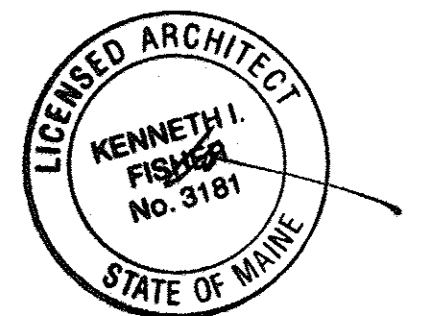
500 Forest Avenue
Portland, ME 04101

One Beacon Street
3rd Floor
Boston, MA 02108
Telephone 617.619.5700
Facsimile 617.619.5701

Gensler

	Issue	Date & Issue Description	By	Check
	1	06/03/2015	DG/ CV	JR
	ISSUED FOR BID AND PERMIT			

Seal/Signature



Project Name
BANK OF AMERICA
ATM INSTALLATION

Project Number
11.6563.084

CAD File Name

A00-00

Description
DRAWING INDEX, VICINITY MAP, LOCATION MAP, PROJECT INFORMATION,
GRAPHICS SYMBOLS, ABBREVIATIONS AND GENERAL NOTES

Scale

A00.00

©2015 Gensler