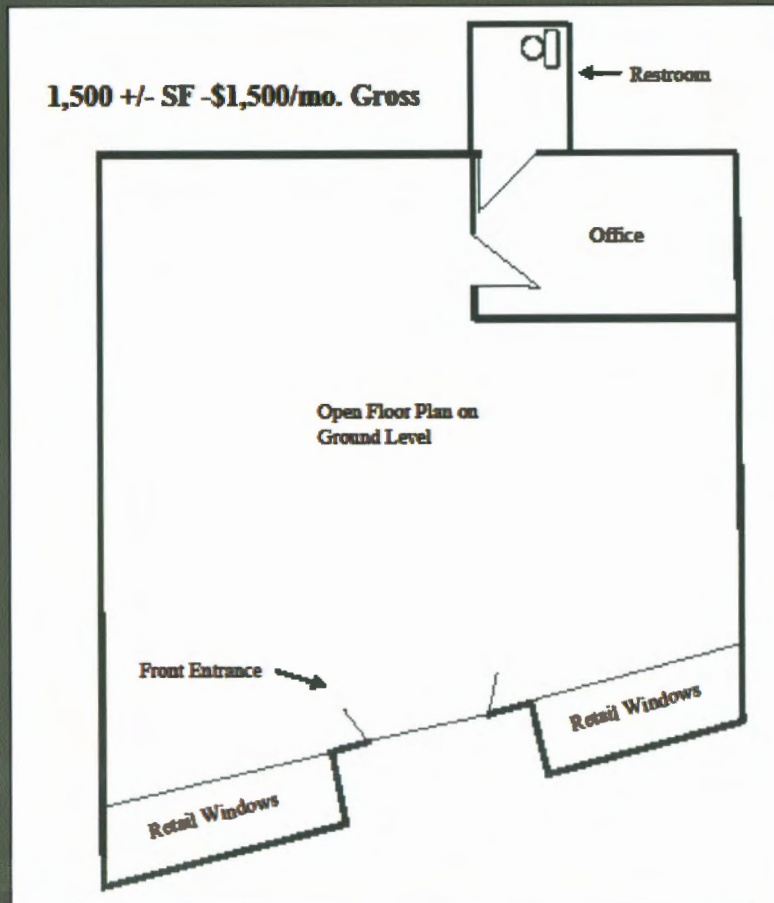




FOR LEASE: 500 FOREST AVENUE SUITE 3, PORTLAND



PROPERTY VITALS	
PROPERTY LOCATION	500 FOREST AVENUE, SUITE 3
OWNER	500 FOREST AVENUE ASSOCIATES
MAP LOT BLOCK	116-E-1
BUILDING SIZE	17,900 ± SF
AVAILABLE SPACE	1,500 ± SF (FIRST FLOOR)
ZONE	B2b BUSINESS COMMUNITY
SPRINKLER	YES
OFFICES	ONE
RESTROOM	1 PRIVATE
HEAT	INCLUDED
ELECTRIC	LANDLORD PAYS
A/C	LANDLORD PAYS
PARKING	ON-SITE- IN REAR OF BLDG.
LEASE TYPE	GROSS
LEASE LENGTH	3 - 5 YEARS
LEASE RATE	\$1,500.00/ MONTH
AVAILABLE	NOW

All information furnished is from sources deemed reliable. No warranty or representation, expressed or implied is made as to the accuracy of information contained herein. All information is submitted subject to errors, omissions, change of price, rental or other conditions, withdrawals, prior to sale or lease or to any special condition, imposed by our principals. All information should be independently verified.