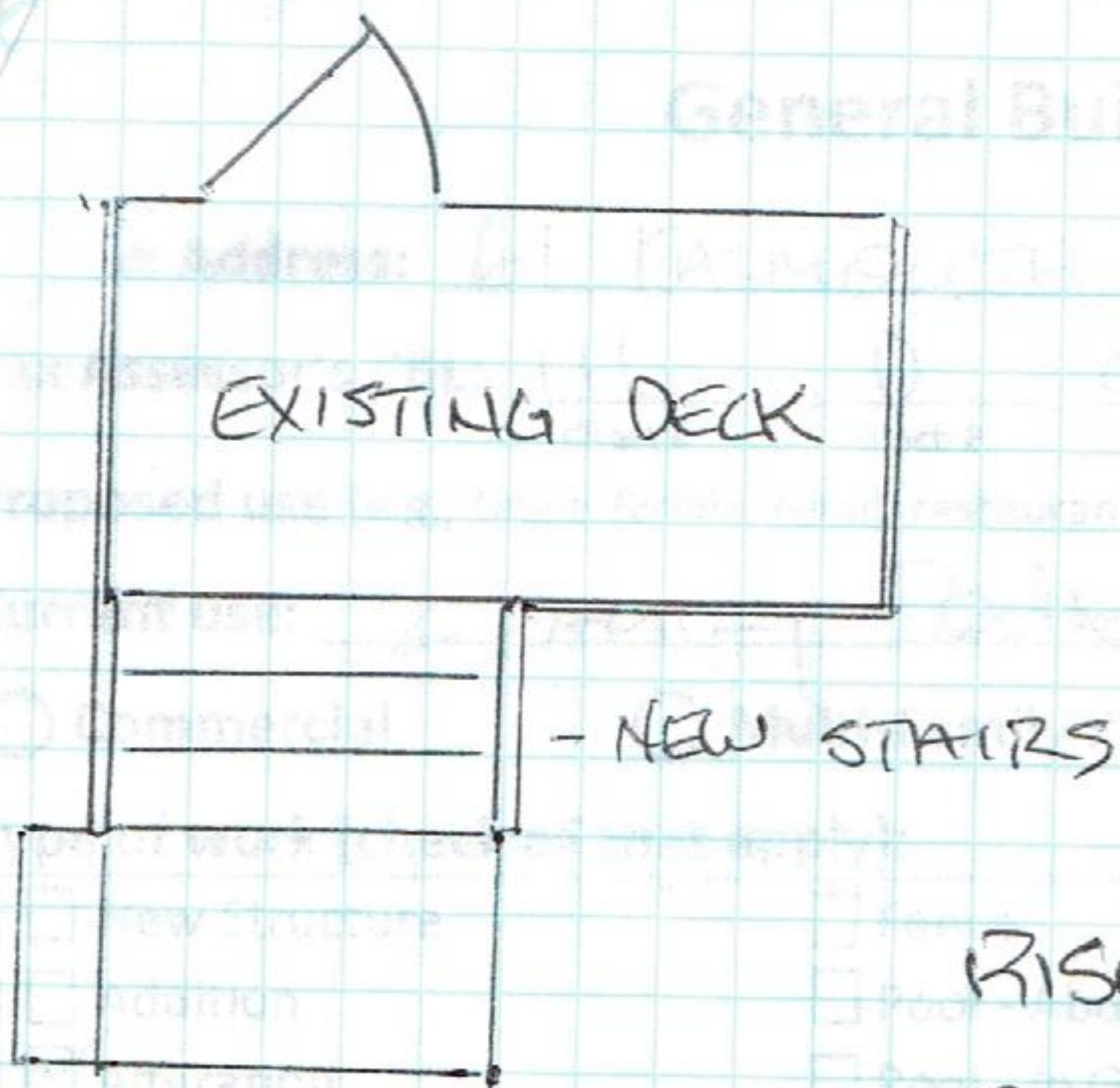


61 FALMOUTH ST.
PORTLAND ME 04103

GZ STAIR DETAILS
@ OAKDALE ST.



RISE - $7\frac{3}{4}$ "

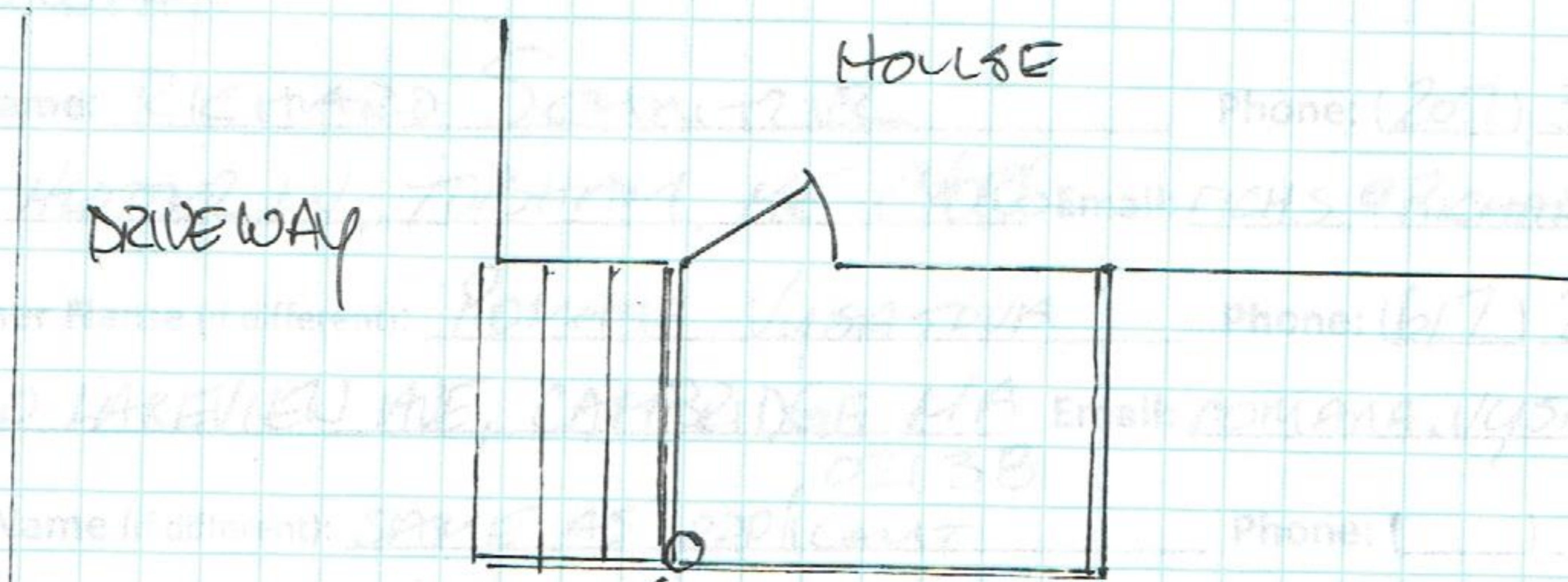
RUN - 11"

HEAD RM - OPEN

GUARDS RAILS - 4x4 POSTS w/ 2x4 PT RAIL
1 1/2" GRAB RAIL

BALUSTER - 2x2 PT 4" OC

ADJUSTMENT TO ABOVE:



NEW FOOTING

REMOVE EXISTING DECK TO DOOR
THEN BRING STAIRS BACK INTO
DRIVEWAY.