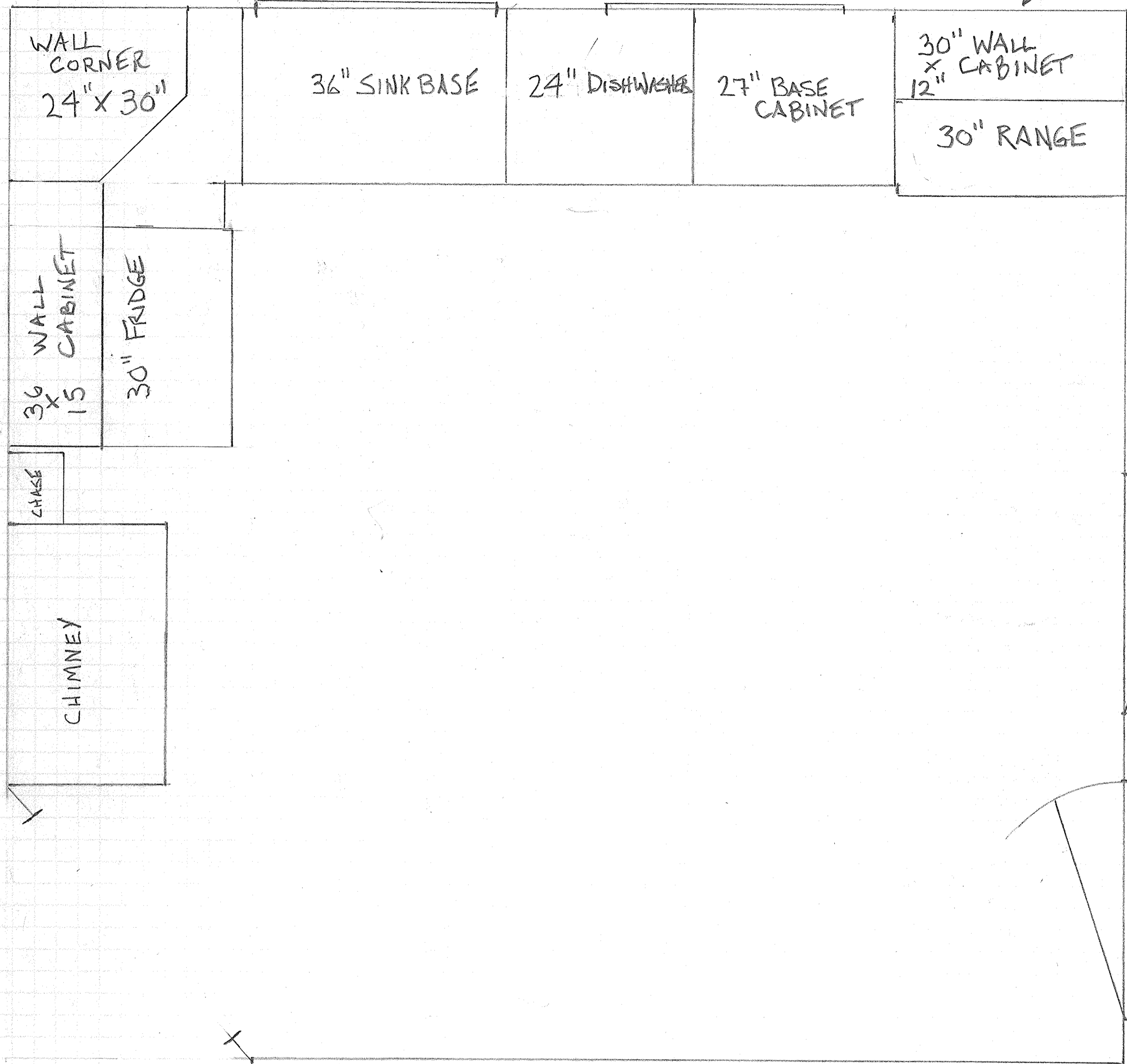


FALMOUTH ST.

EXTERIOR WALL



WILL BE INSTALLING NEW CABINETS FOLLOWING OLD LAYOUT.

WILL BE STRIPING HORSEHAIR PLASTER AND LATHE FROM THE EXTERIOR WALL BEHIND KITCHEN CABINETS, INSULATING WITH 3 1/2" FIBERGLASS AND THEN PUTTING 1/2" DRYWALL UP.

45-47 FALMOUTH ST. 3W KITCHEN

SCALE 1" = 1'