

I hereby certify that this drawing, Specification, plan, or report was prepared by me or under my direct supervision and that I am a duly registered Architect (or Engineer, respectively) under the laws of the State of which govern this project. **WARNING:** per LAW No person may alter these documents unless person is or under the direct supervision of the licensed record architect (or Engineer, respectively). [including all copyrights: JCM] PROFESSIONAL SEAL:

Date: \_\_\_\_\_  
John C. Workley Registration No. 63-82844-1  
Expiration Date: 6/30/2015

PROPOSED TENANT IMPROVEMENTS FOR:

**KeyBank National Association**  
Forest Avenue Branch  
400 Forest Ave.  
Portland, Maine 04101

**DRAWING RELEASE**

No.	Date	Description
1	05/28/2014	OWNER REVIEW

DRAWN BY: SDR  
CHECKED BY: SDW  
JOB NUMBER: 140480.00

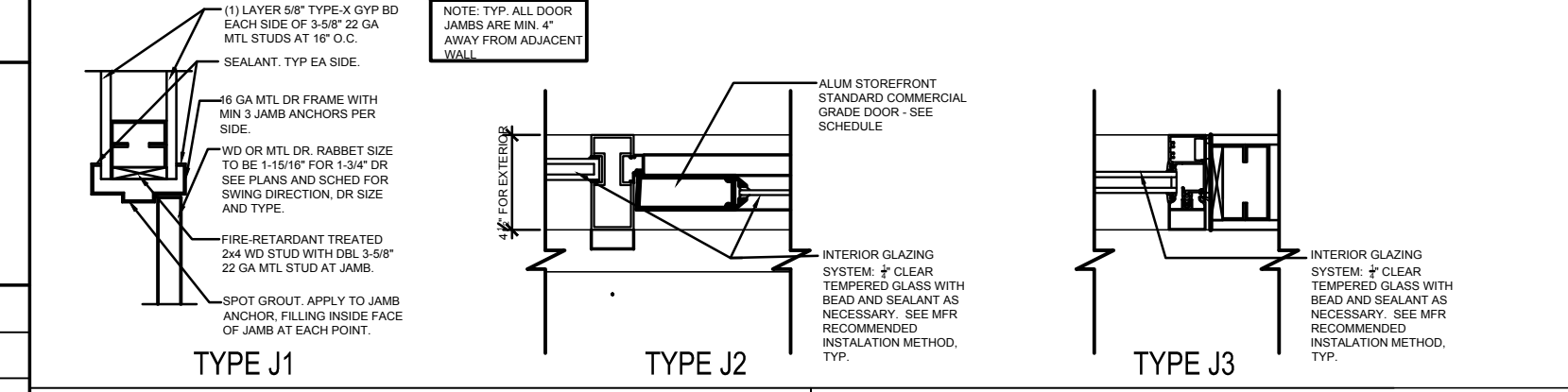
DATE ISSUED FOR: x/2014 - CD APPROVAL

SHEET TITLE:  
**CONSTRUCTION PLAN AND NOTES**

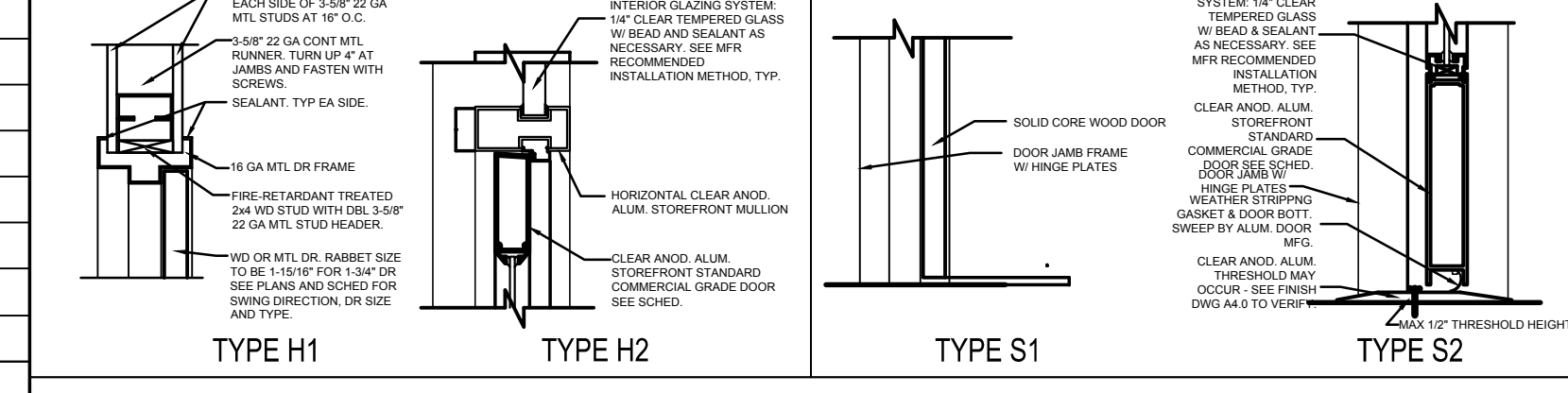
SHEET NUMBER:

**A1.1**

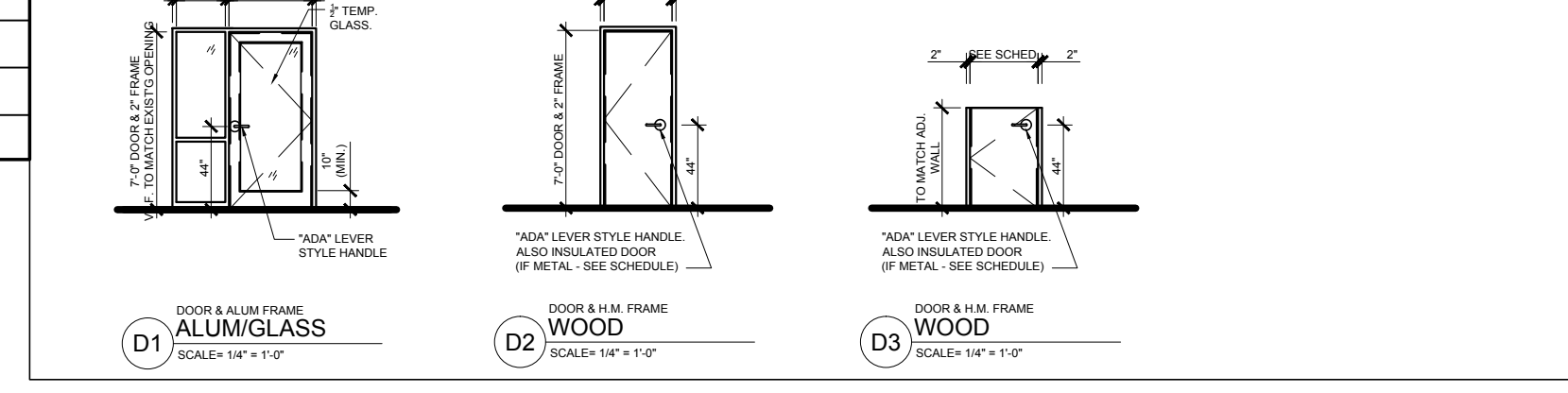
**JAMB DETAILS**



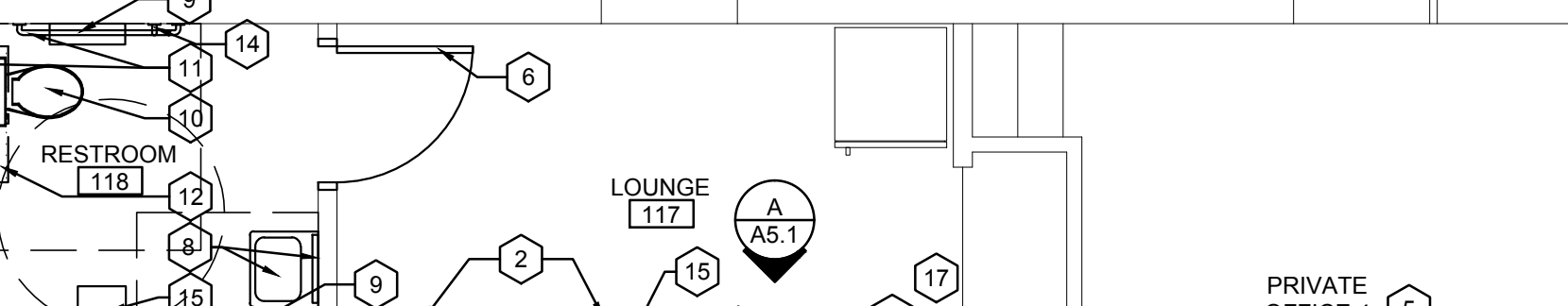
**HEAD DETAILS**



**SILL DETAILS**



**DOOR & FRAME TYPES**



**DOOR SCHEDULE:**

NO.	LOCATION	DOOR	FRAME			REMARKS									
			THICKNESS	MATERIAL	FINISH										
101A	VESTIBULE	101 D1 3'-8" X 7'-0"	1-3/4"	ALUM	-	1/2"	J2	H2	S2	1	-	SEE DOOR KEYNOTE 2			
101B	VESTIBULE	101 D1 3'-8" X 7'-0"	1-3/4"	ALUM	-	1/4"	J2	H2	S2	1	-	SEE DOOR KEYNOTE 2			
102	LOBBY	102								7	-	SEE DOOR KEYNOTE 1			
105	PRIVATE OFFICE 1	105								5	-	SEE DOOR KEYNOTE 1			
106	PRIVATE OFFICE 2	106								5	-	SEE DOOR KEYNOTE 1			
107	PRIVATE OFFICE 3	107								5	-	SEE DOOR KEYNOTE 1			
108	PRIVATE OFFICE 4	108								5	-	SEE DOOR KEYNOTE 1			
109	CONFERENCE ROOM	109								5	-	SEE DOOR KEYNOTE 1			
110	FILE ROOM	110								2	-	SEE DOOR KEYNOTE 1			
111	TELLERLINE	111 D3 3'-0" X 7'-0"	1-3/4"	SCWD	PT-2	-	HM	PT-2	-	J1	H1	S1	3	-	SEE DOOR KEYNOTE 3
112A	VAULT VESTIBULE	112								3	-	SEE DOOR KEYNOTES 1 & 3			
112B	VAULT VESTIBULE	112								2	-	SEE DOOR KEYNOTE 1			
114	COUPON ROOM	114								5	-	SEE DOOR KEYNOTE 1			
115	JANITORS	115								2	-	SEE DOOR KEYNOTE 1			
117	LOUNGE	117 D2 3'-0" X 7'-0"	1-3/4"	SCWD	PT-2	-	HM	PT-2	-	J1	H1	S1	2	-	
118	RESTROOM	118 D2 3'-0" X 7'-0"	1-3/4"	SCWD	PT-2	-	HM	PT-2	-	J1	H1	S1	6	-	

**DOOR & FRAME NOTES**

- ALL INTERIOR DOORS THAT ARE SOLID WOOD CORE DOORS SHALL BE MAPLE OR BIRCH VENEER STAIN GRADE SHOP FINISHED.
- ALL DOORS TO BE LOCKABLE. FREE-TURNING FROM INSIDE OF LOCKED SPACE. BOTH THE LATCH AND DEADBOLT DEVICES ON EXTERIOR DOORS SHALL RELEASE W/ A SINGLE ACTION OF THE INSIDE KNOB OR LEVER. (VERIFY FINAL HARDWARE WITH OWNER)
- ALL EXTERIOR STEEL METAL DOOR FRAMES TO BE STEELCRAFT OR EQUAL WELDED 2" FRAMES, PRIMED AND READY FOR PAINTING.
- ALL EXIT DOOR HARDWARE ALLOWS DOOR TO BE OPEN IN THE DIRECTION OF EXIT WITHOUT THE USE OF A KEY OR SPECIAL KNOWLEDGE OR EFFORT.
- PROVIDE THRESHOLDS WITH A MAXIMUM HEIGHT OF 1/2" AND BEVEL OF 1:2
- THE MAXIMUM EXTERIOR DOOR OPENING EFFORTS SHALL BE 5 POUNDS.
- ALL ENTRANCE DOORS SHALL BE EQUIPPED W/ DEADBOLTS HAVING 1" THROW W/ EMBEDMENT OF AT LEAST 3/4".
- HINGES FOR OUTSWINGING EXTERIOR DOORS SHALL BE EQUIPPED WITH NON-REMOVABLE HINGE PINS.
- ALL EXTERIOR DOORS SHALL HAVE SECURITY DOOR ALARM CONTACT INSTALLED ON FRAMES. SEE ELECTRICAL DRAWINGS FOR POWER AND COORD. W/ OWNER FOR FINAL APPROVAL OF HARDWARE.
- G.C. TO COORD. W/ KEYBANK SIGNAGE VENDOR AND CITY OFFICIAL TO POST SIGN FOR DOOR #100B & #116B IN VISIBLE SIGHT WITH LETTERS NOT LESS THAN 1" HIGH ON CONTRASTING BACKGROUND THAT READS "THIS DOOR MUST REMAIN UNLOCKED WHEN BUILDING IS OCCUPIED".
- ALL LOCKS TO BE KEYPED TO KEYBANK MASTER KEYING SYSTEM. COORD. W/ KEYBANK CONSTRUCTION MANAGER.

**DOOR KEY NOTES**

- REFINISH DOOR, FRAME AND TRIM IN PT-2
- WOOD FRAMES, CASING AND BASE FROM KEYBANK MILLWORK VENDOR. G.C. TO INSTALL MILLWORK PER A/WI PREMIUM GRADE STANDARDS. ALL FASTENERS MUST BE CONCEALED FROM VIEW AND FILLED W/PUTTY THAT MATCHES STAIN. ALL MITERED CORNERS MUST BE BISCUITED & ALIGNED FLUSH W/ WALL.
- ALL DOORS LEADING FROM SECURE AREAS SHALL BE FITTED WITH DOOR SCOPE.
- G.C. TO VERIFY MFG STYLE W/ KEYBANK FACILITY MANAGER PRIOR TO ORDERING. SOME LOCAL KEYBANKS MAY BE NON-STANDARD SPEC AND MUST BE VERIFIED W/ MANAGER.
- ALL STOREFRONTS TO BE CENTER-GLAZED SYSTEMS
- G.C. TO COORD. PRE-MACHINED DOORS WITH MILLWK FRAMES. FRAMES SHOULD BE MACHINED IN THE FIELD.
- G.C. TO VERIFY STOREFRONT FRAME WIDTH W/ LOCAL MFG TO MEET LOCAL SEISMIC & WIND LOAD CRITERIA
- FOR EXTERIOR DOOR H.M. FRAME MUST BE 14 GA. MIN. & GROUTED SOLID, PRIMED AND PAINTED W/ PRE-MACHINED HARDWARE.
- INTERIOR DOOR H.M. FRAME MUST BE 16 GA. MIN. & PRIMED AND PAINTED W/ PRE-MACHINED HARDWARE.
- ALL INTERIOR WOOD SHALL BE HARDWOOD SEALED & SHOP FINISHED STAINED.
- ADJUST PULL STRENGTH AND CLOSING SPEED. 5 LB. PULL MAX. 5 SEC. MIN. CLOSE SPEED.

**CONSTRUCTION PLAN LEGEND**

- # A#00 - INDICATES DETAIL OR PLAN NUMBER
- # A#00 - INDICATES DWG SHEET NUMBER
- # A#00 - INDICATES SECTION NUMBER
- # A#00 - INDICATES DWG SHEET NUMBER
- #000 - INDICATES MILLWORK ITEMS
- #000 - INDICATES DOOR NUMBER
- # - INDICATES NON-RATED ASSEMBLY WALL TYPE NUMBER (SEE WALL TYPE LEGEND THIS SHEET)
- # - INDICATES KEY NOTES NUMBER (SEE KEY NOTES LEGEND THIS SHEET)
- # - INDICATES WINDOW TYPE (SEE SHEET A1.2)
- - - - - INDICATES EXISTING TO REMAIN
- - - - - INDICATES NEW CONSTRUCTION
- - - - - INDICATES NEW CONSTRUCTION, PARTIAL HT.
- ROOM 115 - INDICATES ROOM NAME
- 115 - INDICATES ROOM NUMBER
- # A#00 - INDICATES ELEVATION NUMBER
- # A#00 - INDICATES DWG SHEET NUMBER

**CONSTRUCTION WALL TYPE LEGEND**

TYPE	DESCRIPTION	WIDTH
1	3 5/8" METAL STUD FROM FLOOR TO MATCH ADJACENT WALL HEIGHT W/ 5/8" GYP. BD. ON EA. SIDE. MR GYP TO BE USED IN ALL WET LOCATIONS	4 7/8"
2	3 5/8" METAL STUD FROM FLOOR (OR TOP OF EXISTING WALL) TO 6" ABOVE CEILING W/ SOUND BATT INSULATION AND 5/8" GYP. BD. ON ONE SIDE. MR GYP TO BE USED IN ALL WET LOCATIONS	4 1/4"

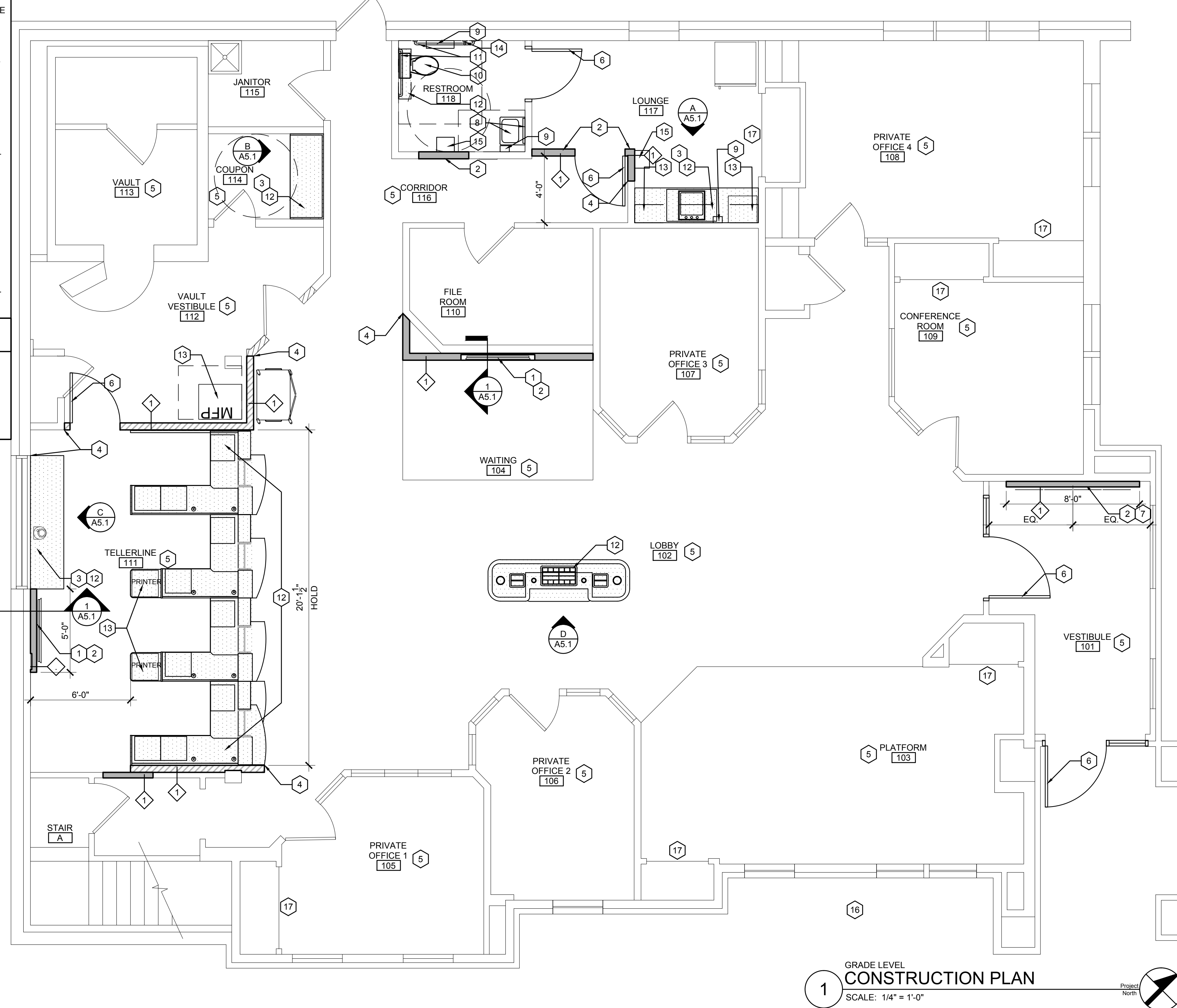
**CONSTRUCTION PLAN KEY NOTES**

- SEE INTERIOR ELEVATIONS FOR SUPPORT AND MOUNTING NOTES FOR (1) LCD SCREEN MONITOR. G.C TO COORD. POWER/DATA W/ ELEC. CONTRACTOR AND RECEPTACLE LOCATIONS W/ MOUNTING HARDWARE. COORD. W/ KEYBANK CONSTR. MGR. & KEYBANK AUDIOVISUAL VENDOR DWGS.
- G.C. TO PROVIDE NEW WALL TO BE FINISHED TO MATCH EXIST'G. PREP TO FINISH.
- G.C. TO PROVIDE ADDITIONAL BLOCKING IN WALL AS REQUIRED FOR SUPPORT OF ANY MILLWORK CABINETRY & ANY OTHER TYPES OF SPECIAL EQUIPMENT, ETC.
- ALIGN
- G.C. TO CHANGE ALL CUSTOMER FACING DEVICES (I.E. OUTLETS, SWITCHES, FACEPLATES) TO WHITE
- NEW DOOR AND FRAME
- COMMUNITY WALL. COORD. W/ KEYBANK MERCHANDISING VENDOR DWGS.
- NEW KEYBANK STANDARD ADA WALL MOUNTED SINK W/ PIPEWRAP. INSTALL NEW 18"X36" MIRROR ABOVE SINK
- RELOCATED SOAP AND TOILET TISSUE DISPENSERS TO ACCESSIBLE HEIGHTS AND LOCATIONS
- NEW KEYBANK STANDARD ADA TOILET INSTALLED AT ACCESSIBLE HEIGHT AND LOCATION
- RELOCATED GRAB BARS TO HAVE TOPS AT 35" AFF AND CORRECT ACCESSIBLE LOCATIONS.
- NEW MILLWORK PROVIDED AND INSTALLED BY KEYBANK VENDOR
- RELOCATED EQUIPMENT ITEMS. GC RESPONSIBLE FOR POWER AND DATA. PLATES AND DEVICES TO BE WHITE
- NEW 18" VERT GRAB BAR AT ACCESSIBLE HEIGHT
- NEW STANDARD PAPERTOWEL DISPENSER INSTALLED AT ACCESSIBLE HEIGHT AND LOCATION
- TEMPORARY "OPEN DURING CONSTRUCTION" SIGN TO BE DISPLAYED, COORD W/ F.M.
- OVERHEAD BY-PASS SLIDING DOOR HARDWARE TO REMAIN. GC TO CHANGE OUT DOOR PULLS TO FINISH 626

**HARDWARE SETS**

HW SET:01	EACH DOOR TO HAVE:			
1 EA	PANIC HARDWARE	33A-NL-OP	626	VON
1 EA	RIM CYLINDER	LESS LG/SM IC CORE	626	SCH
1 EA	CORE ONLY	SM OR LG TO MATCH EXISTING	626	SCH
1 EA	SURFACE CLOSER	4111 SCHUSH	689	LCN
1 EA	MOUNTING PLATE	4110-18	689	LCN
BUTT HINGES, KAMNEER 'ARCHITECTS CLASSIC' CP11 PUSH & C09 PULL AND SEALS. THRESHOLD, SWEEP AND GASKETING ON EXTERIOR DOOR. SEALS BY MANUFACTURER.				
HW SET:02	EACH DOOR TO HAVE:			
3 EA	HINGE	3CB1 4.5 X 4.5	652	IVE
1 EA	STOREROOM LOCK	T881 LESS SM/LG IC CORE TO MATCH REGION	626	FAL
1 EA	CORE ONLY	SM OR LG TO MATCH REGION	626	SCH
1 EA	SURFACE CLOSER	4011H4111H AS REQ'D	689	LCN
1 EA	KICK PLATE	8400 8"X1" OR 2" LDW ON NON-PUBLIC SIDE	630	IVE
1 EA	WALL STOP	WS407CCV	630	IVE
3 EA	SILENCER	608CA	CLEAR	ROC
1 EA	DOOR SCOPE	DE SEUNG TRADING COMP. DS2000	626	ROC
HW SET:03	EACH DOOR TO HAVE:			
3 EA	HINGE	3CB1 4.5 X 4.5	652	IVE
1 EA	STOREROOM LOCK	T881 LESS SM/LG IC CORE TO MATCH REGION	626	FAL
1 EA	CORE ONLY	SM OR LG FORMAT TO MATCH EXIST'G. REGION	626	SCH
1 EA	KICK PLATE	8400 8"X1" OR 2" LDW ON NON-PUBLIC SIDE	630	IVE
1 EA	WALL STOP	WS407CCV	630	IVE
3 EA	SILENCER	608CA	CLEAR	ROC
HW SET:05	EACH DOOR TO HAVE:			
1 EA	HINGE	3CB1 4.5 X 4.5	652	IVE
1 EA	PRIVACY SET	T301S D	626	FAL
1 EA	WALL STOP	WS407CCV	630	IVE
3 EA	SILENCER	608CA	CLEAR	ROC
HW SET:06	EACH DOOR TO HAVE:			
3 EA	HINGE	3CB1 4.5 X 4.5	652	IVE
1 EA	PRIVACY SET	T301S D	626	FAL
1 EA	SURFACE CLOSER	4011H4111H AS REQ'D	689	LCN
1 EA	KICK PLATE	8400 8" X 2" LDW	630	IVE
1 EA	WALL STOP	WS407CCV	630	IVE
3 EA	SILENCER	608CA	CLEAR	ROC
HW SET:07	EACH DOOR TO HAVE:			
3 EA	HINGE	3CB1 4.5 X 4.5	652	IVE
1 EA	PASSAGE SET	T101S D	626	FAL
1 EA	FLOOR STOP	FS17	626	IVE
1 EA	SILENCER	608CA	CLEAR	ROC
HW SET:10	EACH DOOR TO HAVE:			
3 EA	HINGE	3CB1 4.5 X 4.5 NRP	630	IVE
1 EA	EXIT ALARM	2670	628	VON
1 EA	RIM CYLINDER	LESS LG/SM IC CORE TO MATCH REGION	626	SCH
1 EA	CORE ONLY	SM OR LG TO MATCH REGION	626	SCH
1 EA	SURFACE CLOSER	4111 SCHUSH	689	LCN
1 SET	SEALS	5050CL	CLR	NGP
1 EA	DRIP CAP	16A	AL	NGP
1 EA	DOOR SWEEP	C627	AL	NGP
1 EA	THRESHOLD	613	AL	NGP
1 EA	LOCK GUARD	LG1	630	IVE
1 EA	DOOR SCOPE	DE SEUNG TRADING COMP. DS2000	626	ROC

NOTE: CONFIRM W/ KEYBANK CONSTR. MGF. FOR ALL ACCESSORIES REQ'D.



GRADE LEVEL  
**CONSTRUCTION PLAN**  
SCALE: 1/4" = 1'-0"