

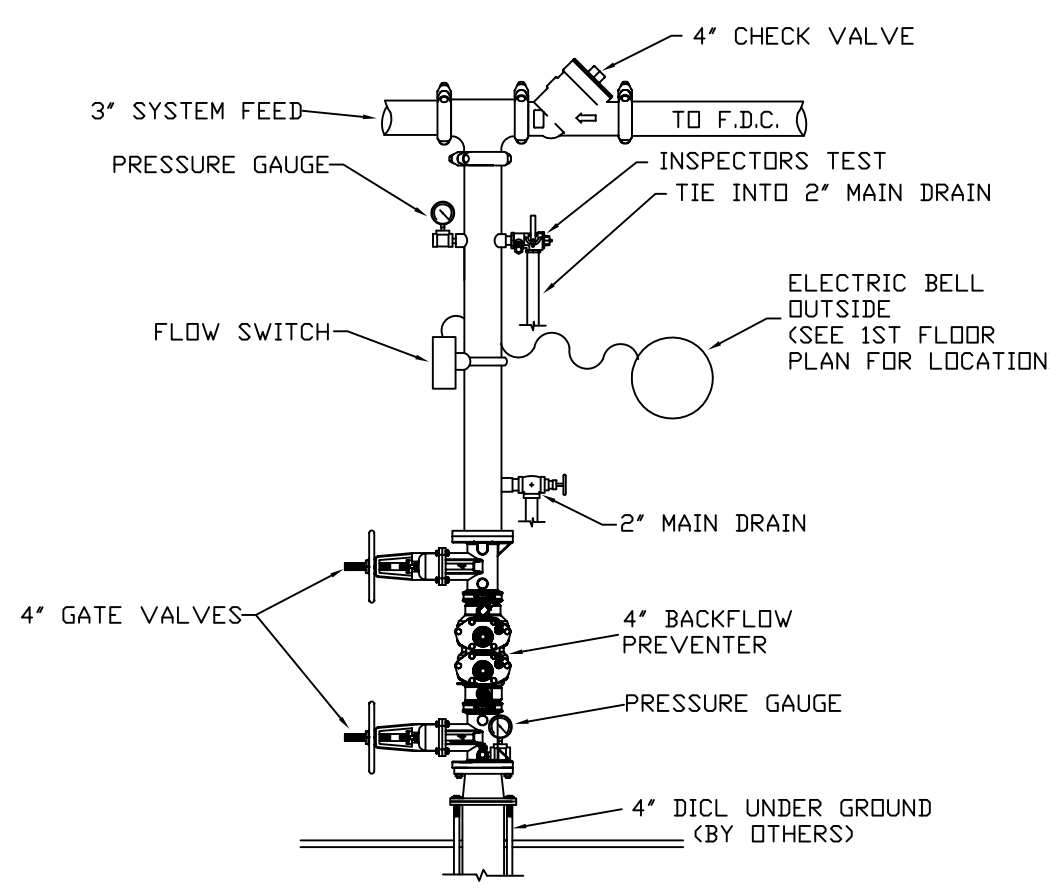
PROJECT INFORMATION:
SCOPE:
 The fire protection project consists of installing a wet sprinkler system in this 4 unit apartment building that also has a mercantile space below on the ground floor. The mercantile space has its own entrance and has a fire barrier between the apartment units.

WATER SUPPLY:
 This is a wet sprinkler system supplied by city water. A 4" underground water main will be brought into the building for the fire sprinkler system. A 4" storz connection will be installed for use by the local fire dept.

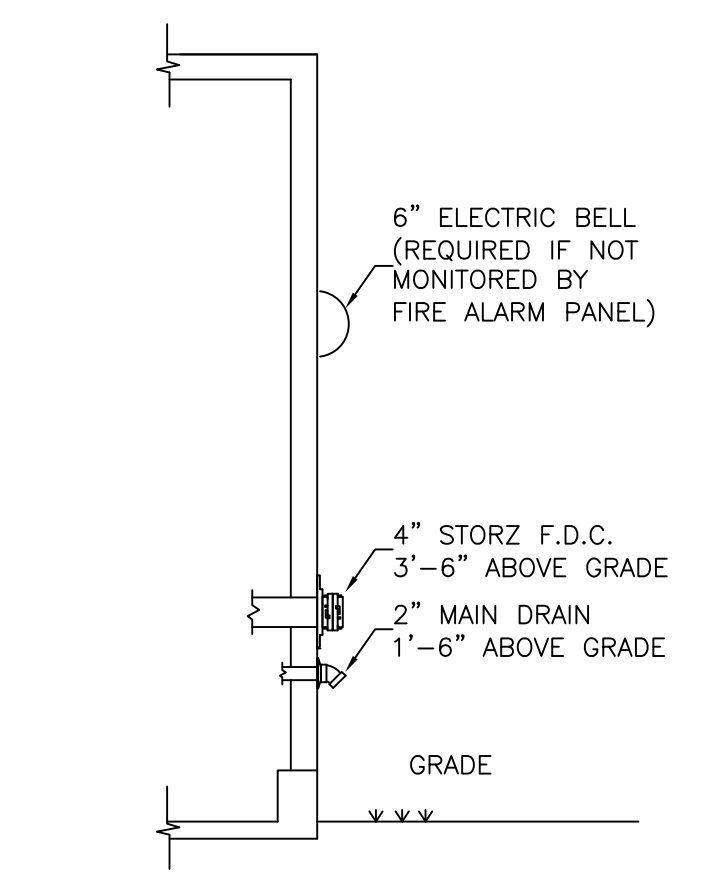
CONSTRUCTION TYPE:
 Construction type is "wood construction with gypsum wall board"

CODE REFERENCES:
 NFPA 13 Wet Sprinkler System.

SPRINKLER SYSTEM NOTES
 * DESIGN AND INSTALLATION SHALL CONFORM TO N.F.P.A. #13R (2016) & LOCAL FIRE AND BLDG. DEPTS.
 * HANGER INSTALLATION AND SPACING SHALL BE IN ACCORDANCE WITH N.F.P.A. #13
 * FIELD FOREMAN TO VERIFY LOCATION OF HIGH TEMPERATURE SPRINKLERS
 AND INSTALL HIGH TEMPERATURE SPRINKLERS IN ACCORDANCE WITH N.F.P.A. #13
 * OWNER SHALL PROVIDE ADEQUATE HEAT IN ALL AREAS ENCLOSING WET TYPE SPRINKLER PIPING TO PREVENT FREEZING AND FAILURE OF AUTOMATIC SPRINKLER SYSTEM.



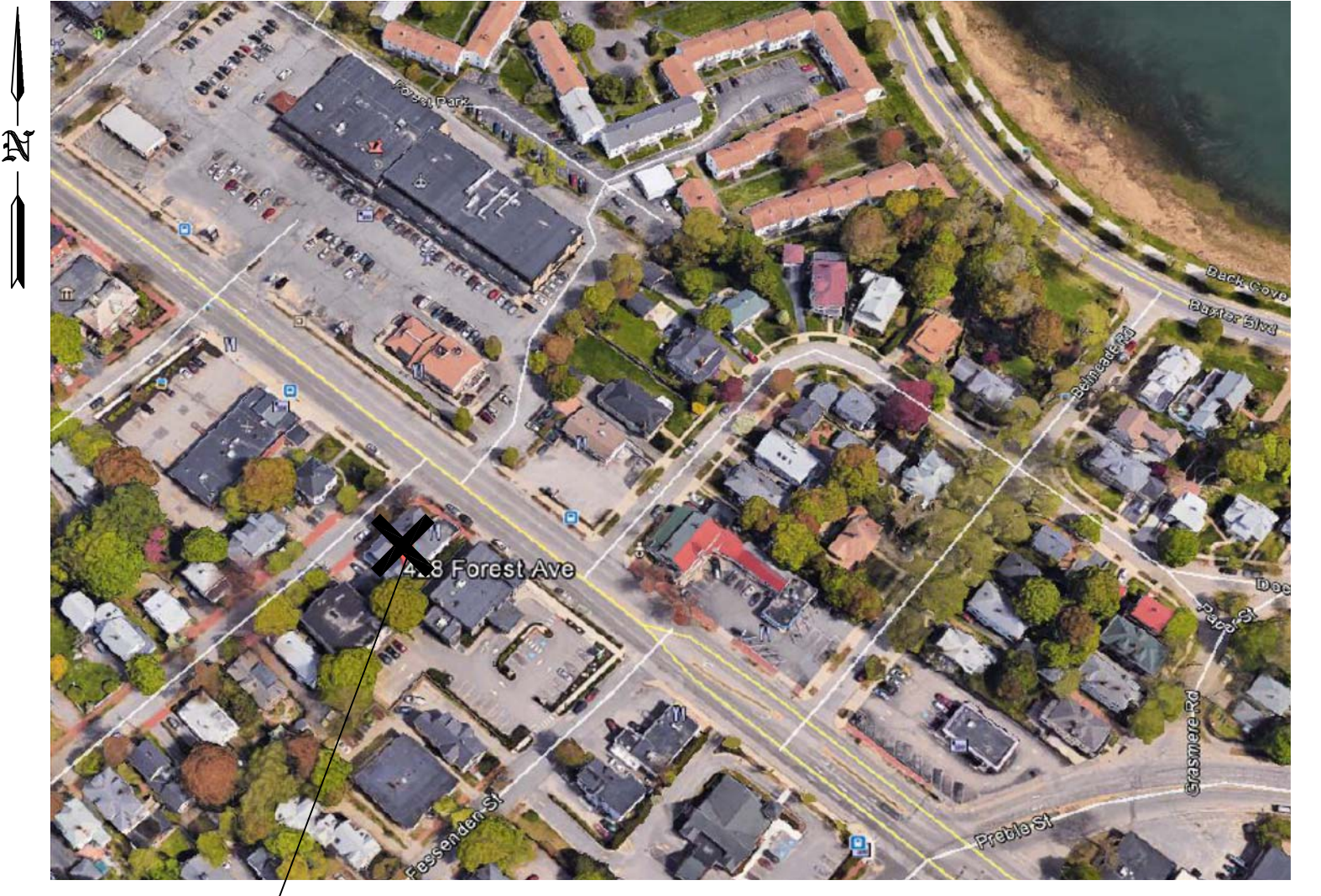
RISER DETAIL
 SCALE: N.T.S.



FDC & DRAIN DETAIL
 SCALE: N.T.S.

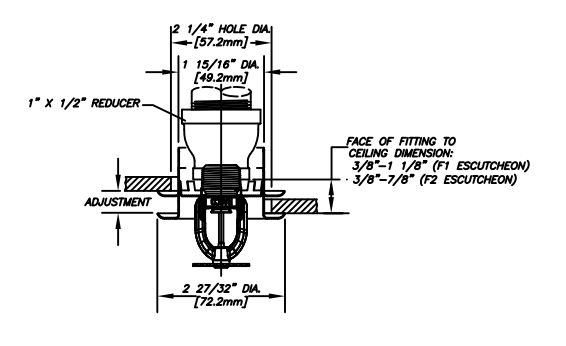


VIEW OF BLDG
 SCALE: N.T.S.

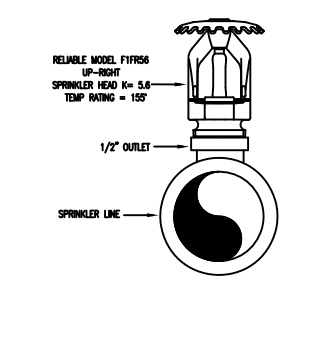


SITE PLAN
 SCALE: N.T.S.

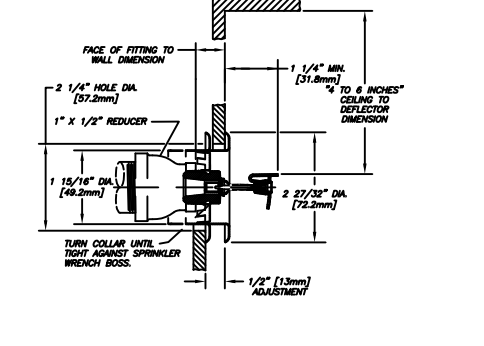
DESIGN AREA #2
HYD. DESIGN CRITERIA
 (NFPA 13 SPRINKLER SYS. WET)
 LOCATION= 2ND FL APT. UNIT
 HAZARD CLASSIFICATION: LIGHT
 DENSITY= .05 GPM/SQ.FT.
 AREA OF OPERATION= 442 SQ. FT.
 HOSE DEMAND: 0 GPM
 NO. OF SPRINKLERS= 4 MOST DEMANDING
 SYSTEM DEMAND (INCLUDING HOSE) @
 BASE OF RISER= 94.2-GPM 67.0-PSI
 SAFETY MARGIN= 32.9-PSI



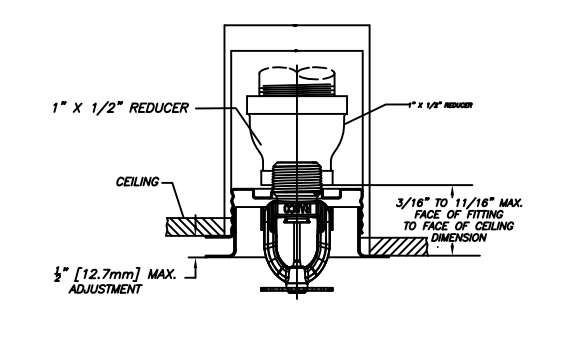
F1FR56 PENDENT DETAIL
 SCALE: N.T.S.



F1FR56 UPRIGHT DETAIL
 SCALE: N.T.S.



F1FR56 HSW DETAIL
 SCALE: N.T.S.



RES49 PENDENT DETAIL
 SCALE: N.T.S.

REVISIONS:

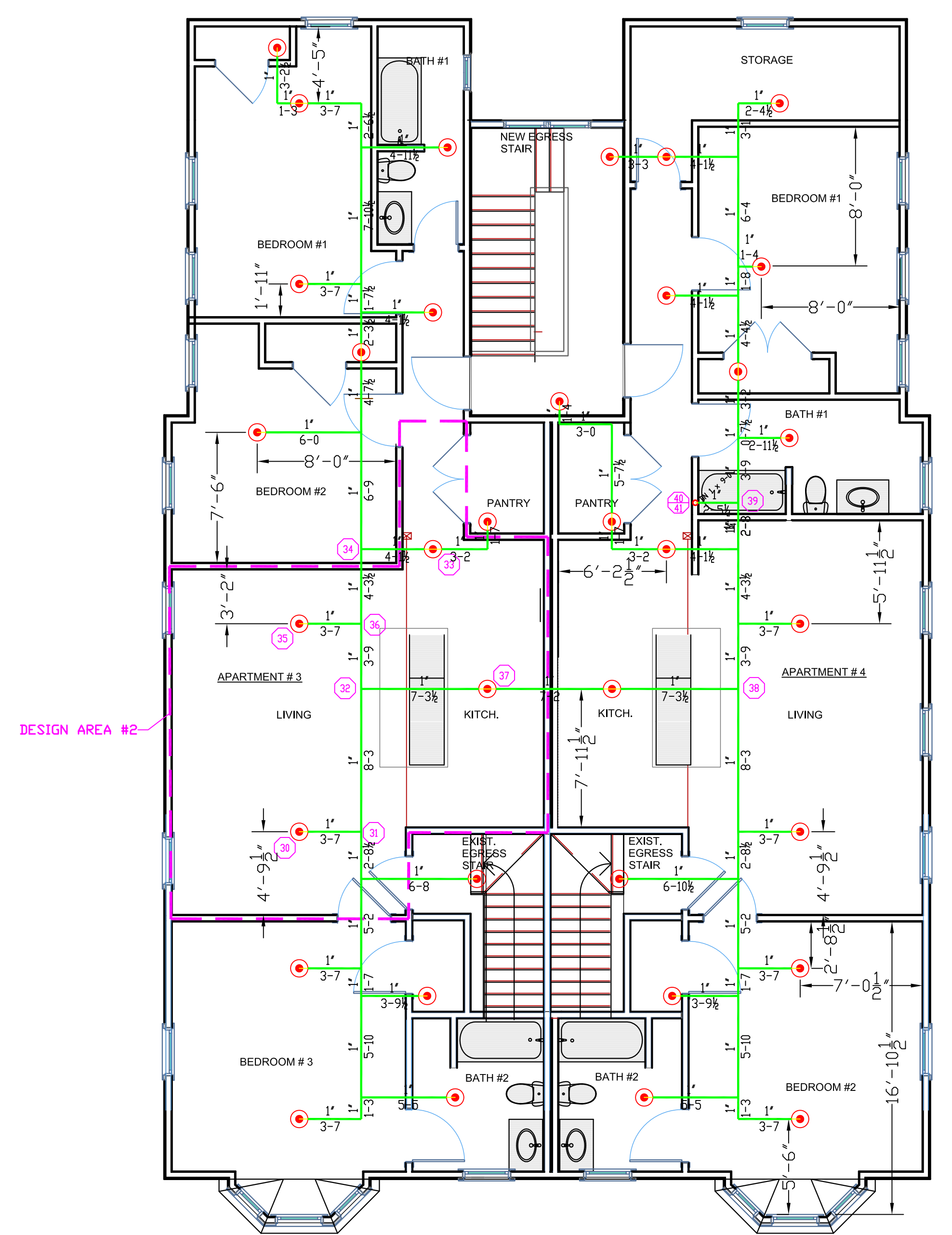
NO.	DATE	DESCRIPTION:

SPECIAL APPLICATIONS:

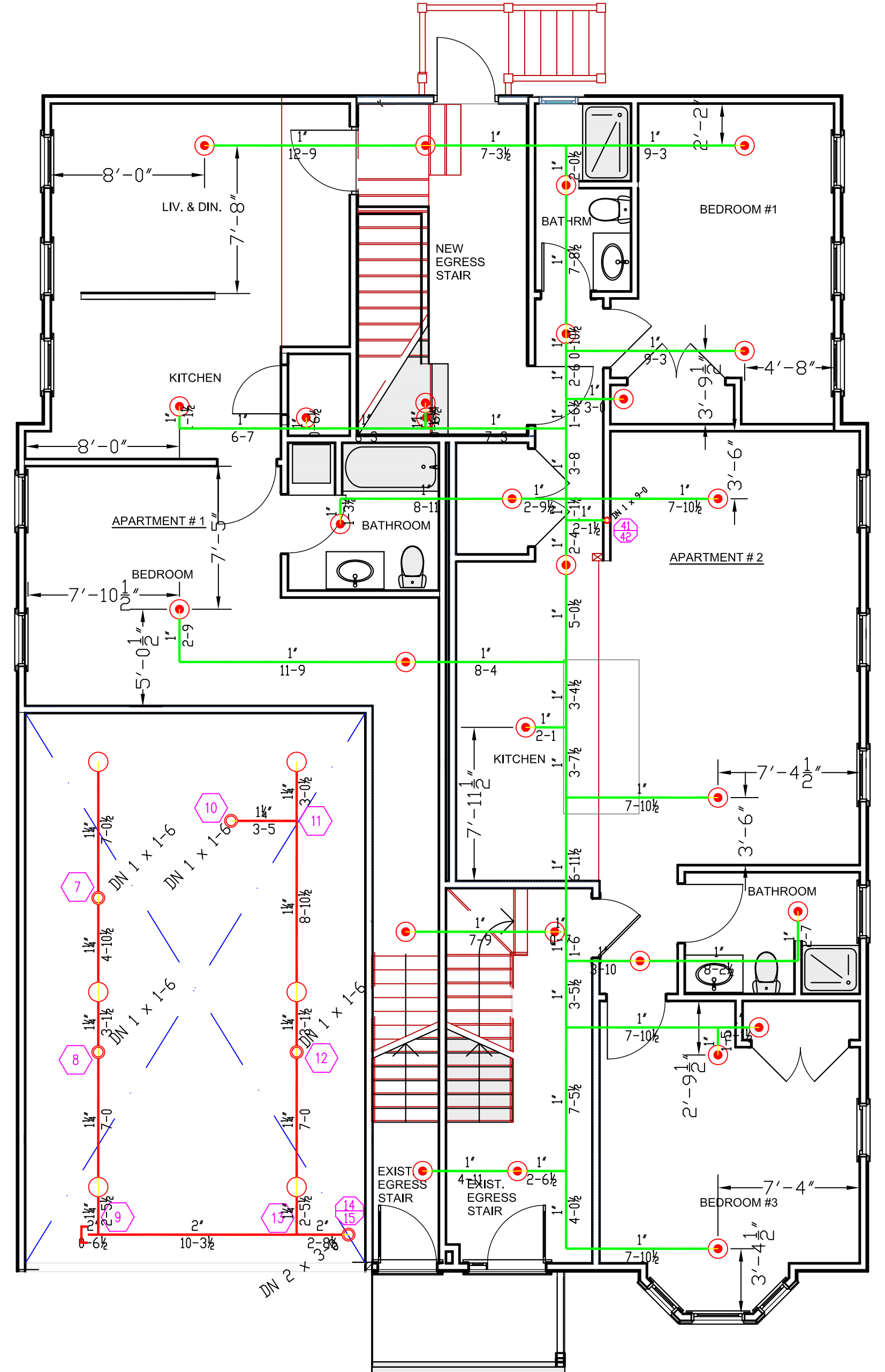
NO.	DESCRIPTION:

SPRINKLER HEAD DESCRIPTION:

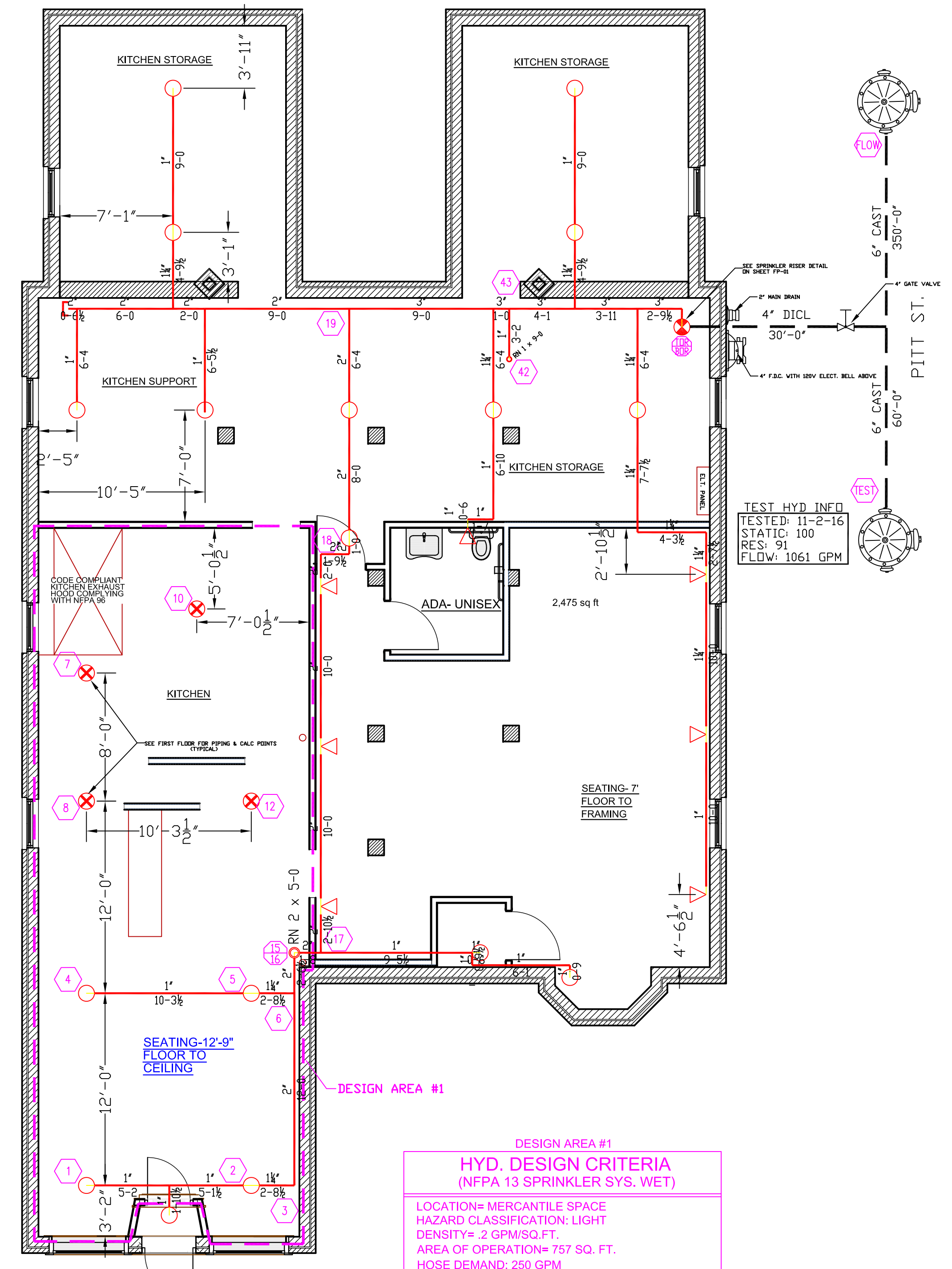
- RELIABLE MODEL F1FR56
 1/2" BRASS UPRIGHT DEFLECTORS 1" TO 6" BELOW COMBUSTIBLE CEILINGS
 130' SPACING
- RELIABLE MODEL F1FR56
 1/2" WHITE PENDENT 130' SPACING
- RELIABLE MODEL F1FR56
 1/2" WHITE SIDEWALL 130' SPACING
- RELIABLE MODEL RES49
 1/2" SEMI-REC. WHITE PEND. 16'X16' SPACING



SECOND FLOOR PLAN
 TOTAL PROTECTED AREA 2,859 SQ.FT.
 SCALE 3/16" = 1'-0"



FIRST FLOOR PLAN
 TOTAL PROTECTED AREA 2,659 SQ.FT.
 SCALE 3/16" = 1'-0"



GROUND FLOOR PLAN
 TOTAL PROTECTED AREA 2,762 SQ.FT.
 SCALE 3/16" = 1'-0"

DESIGN AREA #1
HYD. DESIGN CRITERIA
 (NFPA 13 SPRINKLER SYS. WET)
 LOCATION= MERCANTILE SPACE
 HAZARD CLASSIFICATION: LIGHT
 DENSITY= .2 GPM/SQ.FT.
 AREA OF OPERATION= 757 SQ. FT.
 HOSE DEMAND: 250 GPM
 NO. OF SPRINKLERS= 8 MOST DEMANDING
 SYSTEM DEMAND (INCLUDING HOSE) @
 BASE OF RISER= 424.2-GPM 87.9-PSI
 SAFETY MARGIN= 9.9-PSI

LEGEND:

- SYSTEM RISER
- PIPE RISER UP
- PIPE RISER DOWN
- HYDRAULIC CALC. POINT
- PROPOSED CPVC PIPING
- PROPOSED STEEL PIPING
- UNDERGROUND PIPING

Contractor:
 Alternative Sprinkler Fire Protection
 39 Jackson Rd.
 Poland Spring Me 04274
 207-838-8930

Project:
 428 FOREST AVE
 PORTLAND ME 04101

NFPA 13 SPRINKLER SYSTEM
 Scale: 3/16" = 1'-0"

Drawn by: TIMOTHY FORTIN
 RMS # 866
 NICET LEVEL III CERT. # 122193

Date: DEC 20, 2016
 Approval by: Local Fire Dept.
 State Of Maine

LOCATION:
 428 FOREST AVE
 PORTLAND ME 04101

SHEET NUMBER
FP-01
 1 OF 1

NOTE: USE OF THESE PLANS BY THE INSTALLING CONTRACTOR SHALL INDICATE ACCEPTANCE OF ALL THE INFORMATION PROVIDED ON THESE PLANS AND SHALL TRANSFER FINAL RESPONSIBILITY OF THE CORRECTNESS OF THE SYSTEM TO THE INSTALLING CONTRACTOR. ANY DESIGN ERRORS SHALL BE CORRECTED AT THE CONTRACTOR'S EXPENSE.
 NOTE: ADDITIONAL SPRINKLER HEADS OVER AND ABOVE THOSE SPECIFICALLY NOTED ON THESE DRAWINGS MAY BE REQUIRED DEPENDING ON THE REQUIRED ROUTING AROUND TRUSSES, HVAC DUCTWORK, HOODS AND OTHER SIMILAR OBSTRUCTIONS. FIELD VERIFY EXISTING CONDITIONS DURING CONSTRUCTION AND PROVIDE ANY AND ALL ADDITIONAL HEADS AS REQUIRED FOR FULL COVERAGE AND A COMPLETE, CODE COMPLIANT SYSTEM.