

ROSE FOODS LLC

Tenant Fitout
42B FOREST AVENUE
PORTLAND, ME 04101

CLIENT REPRESENTATIVE FOR ROSE FOODS INC.

TRACIE REED, MAINE LICENSED ARCHITECT
DEXTROUS CREATIVE
46 CUSHMAN STREET #4
PORTLAND, ME 04102
207-409-0459 (CELL)
TRACIEREED@DEXTROUSCREATIVE.COM



DEXTROUS CREATIVE

PORTLAND, ME 04102
TRACIE REED, ARCHITECT
1243B, W. A. LEE ST #204C
traciereed@dextrouscreative.com
207-409-0459 (cell)

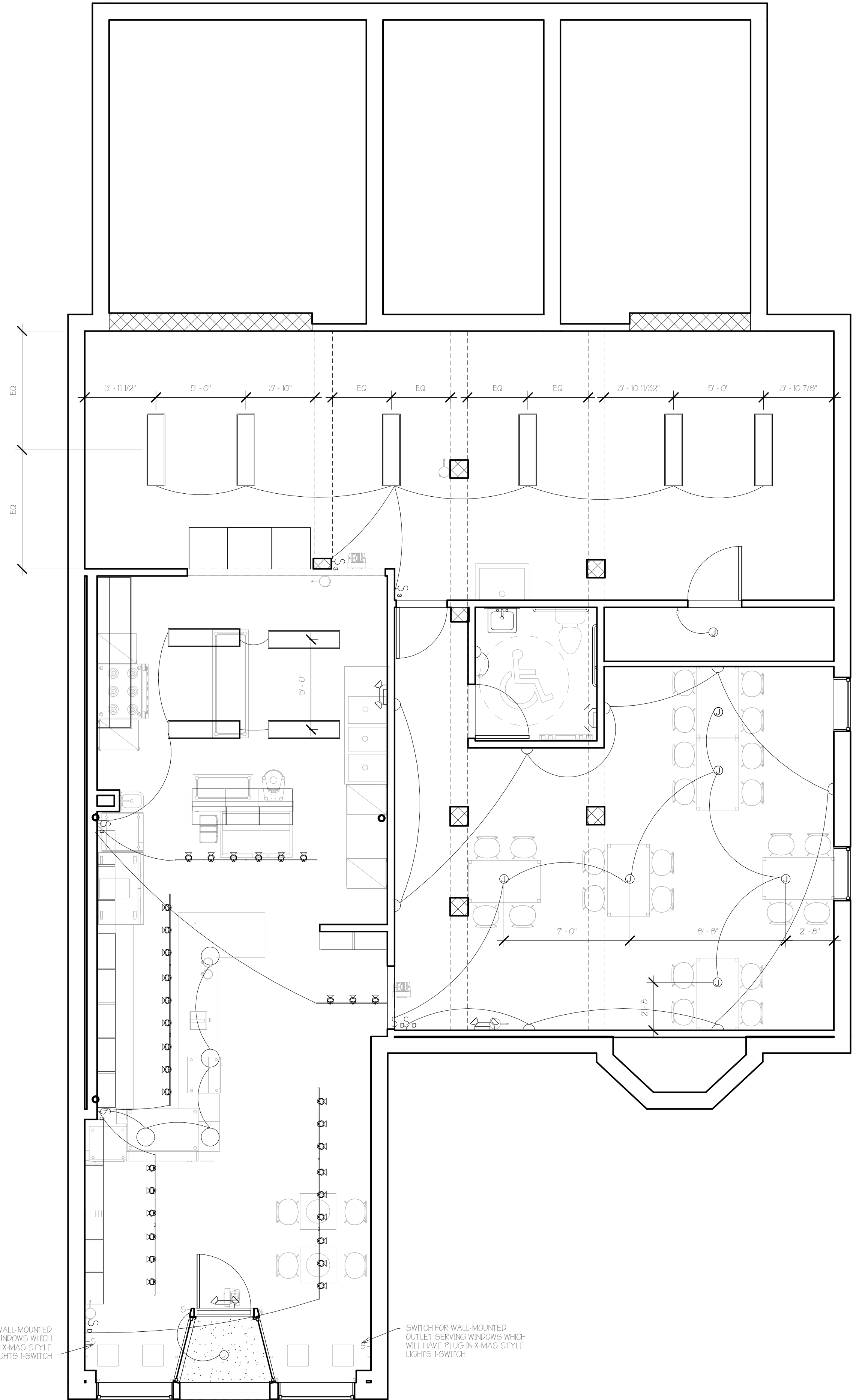
PROJECT TEAM

No.	Description	Date

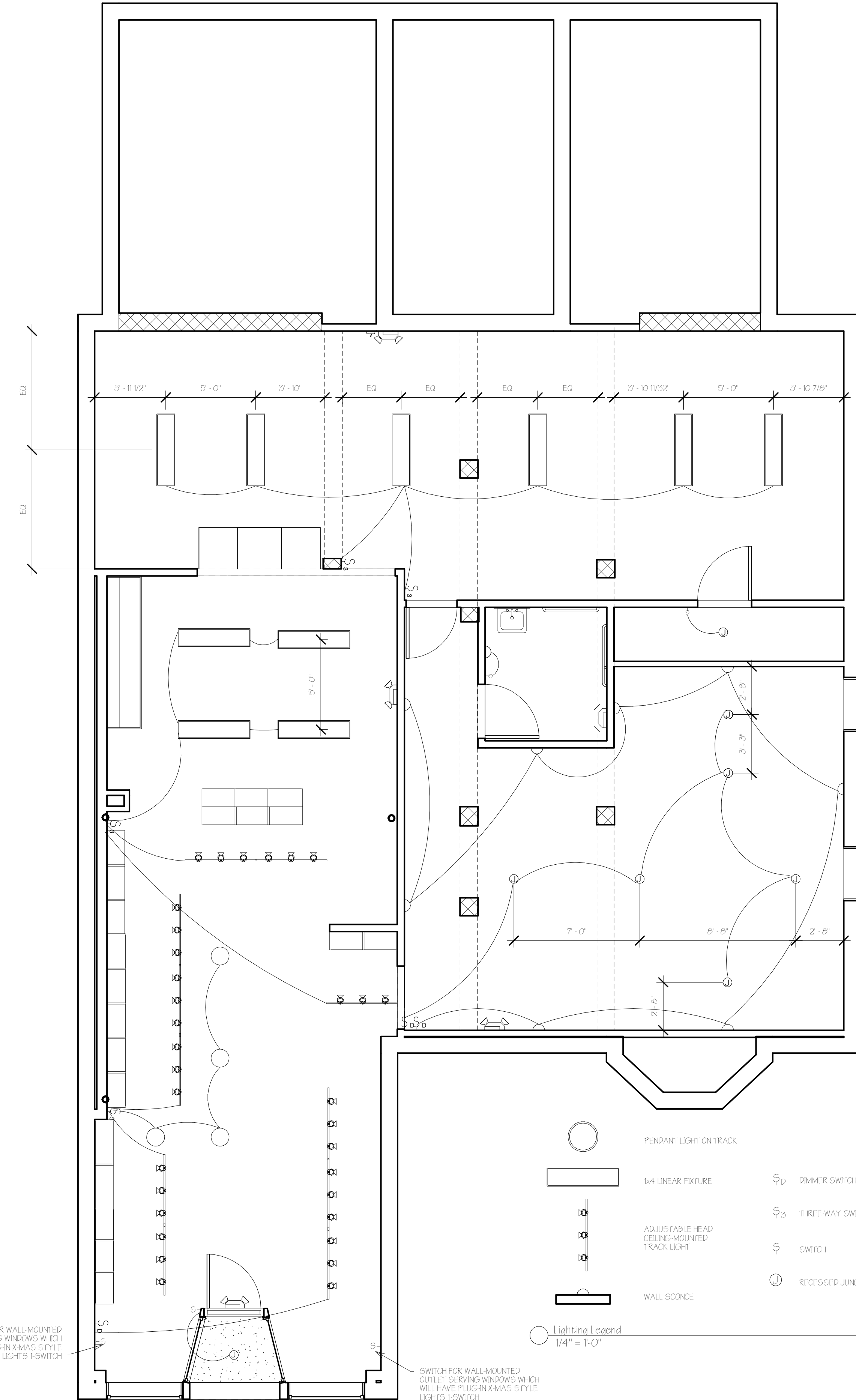
REFLECTED CEILING PLAN

Project number	15-40
Date	04.09.17
Drawn by	Author
Checked by	Checker

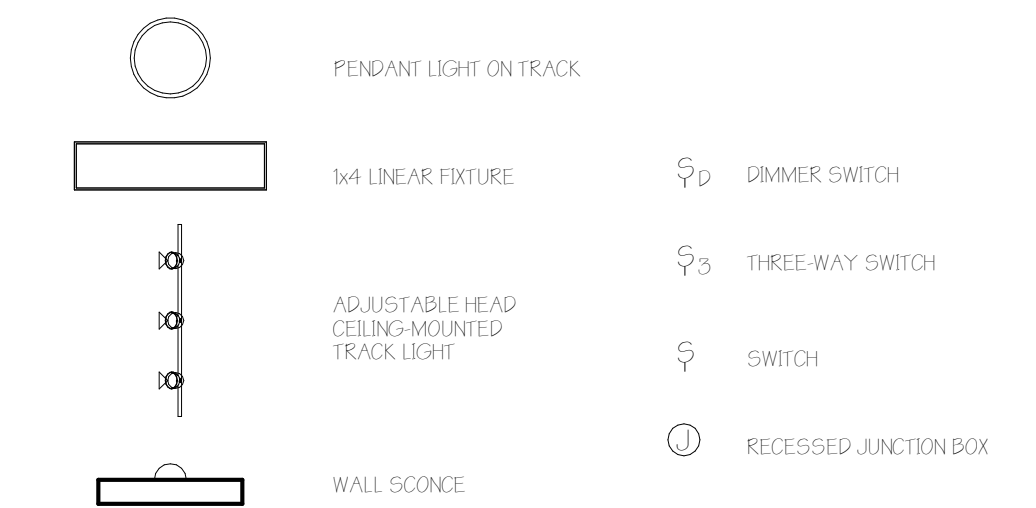
A-12
Scale 1/4" = 1'-0"



1 Reflected Ceiling Plan with Underlay
1/4" = 1'-0"



2 Reflected Ceiling Plan
1/4" = 1'-0"



Lighting Legend
1/4" = 1'-0"

SWITCH FOR WALL MOUNTED
OUTLET SERVING WINDOWS WHICH
WILL HAVE PLUG-IN XMAS STYLE
LIGHTS 1-SWITCH

SWITCH FOR WALL MOUNTED
OUTLET SERVING WINDOWS WHICH
WILL HAVE PLUG-IN XMAS STYLE
LIGHTS 1-SWITCH

SWITCH FOR WALL MOUNTED
OUTLET SERVING WINDOWS WHICH
WILL HAVE PLUG-IN XMAS STYLE
LIGHTS 1-SWITCH

SWITCH FOR WALL MOUNTED
OUTLET SERVING WINDOWS WHICH
WILL HAVE PLUG-IN XMAS STYLE
LIGHTS 1-SWITCH