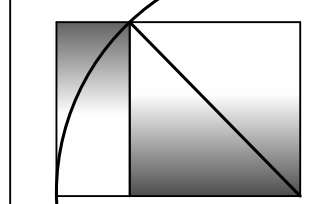


WHIPPLE
 CALLENDER
 ARCHITECTS



136 PLEASANT AVE.
 PORTLAND, ME 04103
 P 207.775.2696
 F 207.775.3631
 www.whipplecallender.com

DESCRIPTION

DATE

MARK

DATE:

PERMIT APP. 9.20.16

CHECKED BY:

JAD

DRAWN BY:

CLBC

JOB:

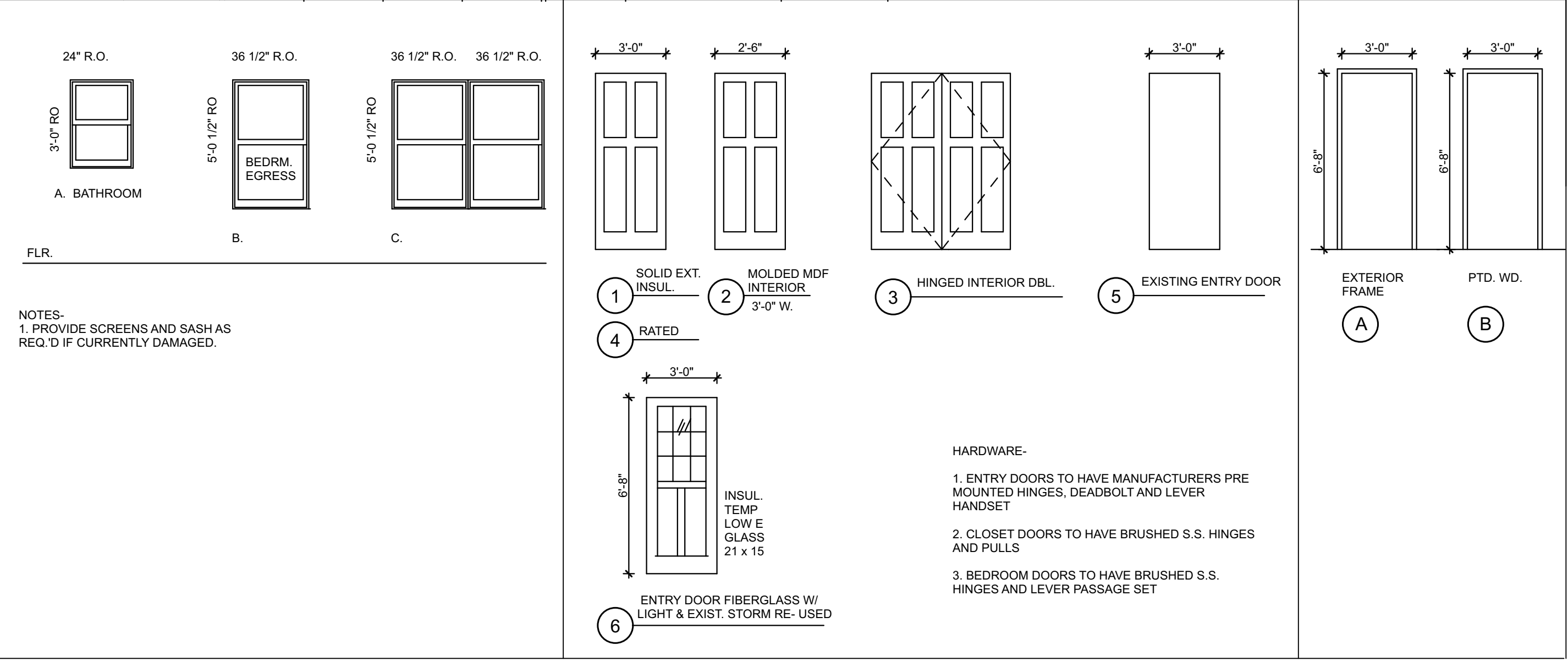
432-2016

SHEET TITLE:

SCHEDULES

WINDOW SCHEDULE- ANDERSEN 400 SERIES- "EX" = EXISTING WINDOW						
MARK	QTY.	MANUFACTURER	MODEL	TYPE	UNIT SIZE	REMARKS
EX		EXISTING	EXISTING	DOUBLE HUNG	APPROX. 5'-6" X 2'-9"	EXISTING WINDOW TO REMAIN
A		ANDERSEN	WDH210410	DOUBLE HUNG	2'-0" X 3'-0"	DINING ROOM
B		NEW VINYL TO MATCH	DH	DOUBLE HUNG	3'-0" X 5'-0"	BEDROOM EGRESS
C		NEW VINYL TO MATCH	DH	DOUBLE HUNG	PAIR 3'-0" X 5'-0 7/8"	STAIR HALL

DOOR SCHEDULE									
DOOR NO.	FUNCTION	DOOR				FRAME		FIRE RATING	NOTES
		TYPE	WIDTH	HEIGHT	MATL.	TYPE	MATERIAL		
1	INT.	4	3'-0"	6'-8"	MOLDED MDF	B	INT. PTD. WD.	N.A.	TYPICAL INTERIOR 3' WIDE DOOR
2	INT.	4	2'-6"	6'-8"	MOLDED MDF	B	INT. PTD. WD.	N.A.	TYPICAL INTERIOR 2'-6" WIDE DOOR
3	INT.	7	5'-0"	6'-8"	MOLDED MDF	B	INT. PTD. WD.	N.A.	SLIDING CLOSET DOOR
4	INT.	4	3'-0"	6'-8"	MOLDED MDF	B	INT. PTD. WD.	90 MIN. RATED	RATED APARTMENT ENTRY DOOR & FRAME ASSEMBLY
5	EXT.	EXIST.	3'-0"	6'-8"	EXIST. PTD. WD.	EXISTING	EXISTING PTD. EXT.	N.A.	REPAIR EXISTING EXT. DOORS AND INSTALL SCREEN DOORS
6	EXT.	1	3'-0"	6'-8"	FIBERGLASS	A	EXT.	N.A.	NEW ENTRY DOOR WITH SCREEN DOOR
B-1	EXT.	EXIST.	3'-0"	6'-8"	ALUM.	A	EXT.	N.A.	EXISTING VESTIBULE DOORS



1 SCHEDULES
 A6.1 SCALE: 1/4" = 1'-0"