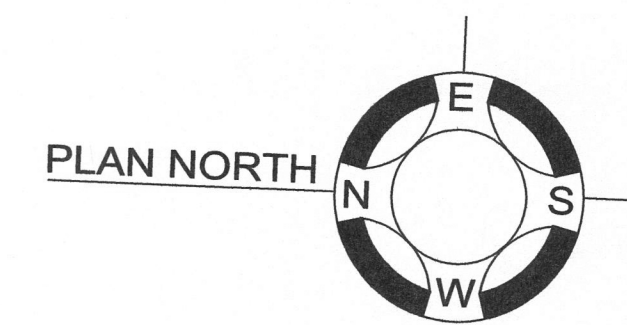
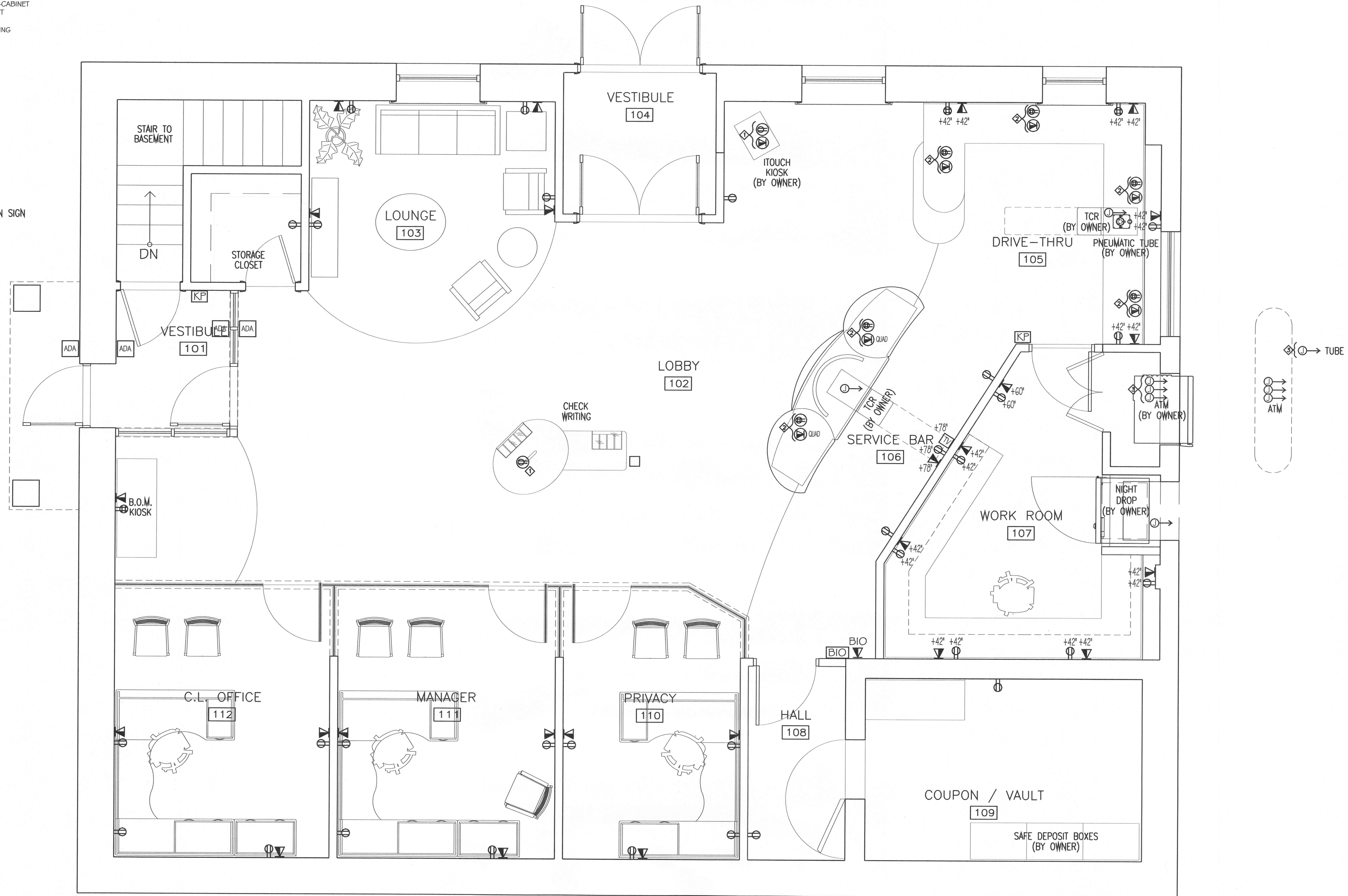


GENERAL POWER/DATA NOTES:

- ◇ COORDINATE LOCATION OF FLOOR OUTLETS/DATA WITH ARCHITECT
- ◇ COORDINATE LOCATION OF IN-CABINET OUTLETS/DATA WITH ARCHITECT
- ◇ ANTICIPATED RE-USE OF EXISTING POWER/DATA/SECURITY SERVICE/CONDUIT.

⊕ → PYLON SIGN

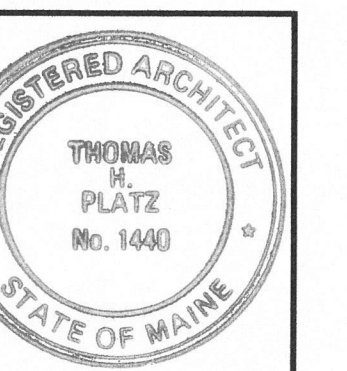


**2 FIRST FLOOR POWER/DATA PLAN**

SCALE: 3/8" = 1'-0"

**PLATZ ASSOCIATES**  
 Architects - Engineers  
 Construction Managers  
 Tel 207-784-2941  
 Fax 207-784-3856  
 Two Great Falls Plaza, Auburn, Maine 04210

Construction of:  
**NORWAY SAVINGS BANK**  
 446 Forest Avenue  
 Portland, Maine 04101



- DRAWING STATUS
- OFFICE REVIEW
  - CLIENT REVIEW
  - PERMIT REVIEW
  - BID SET
  - CONTRACT DRAWING
  - CONSTRUCTION
- No drawing shall be recognized as a construction document unless it bears a blue inked registration seal.

SHEET TITLE  
**FIRST FLOOR POWER/DATA PLAN**

JOB NO.  
 20142

DRAWN BY  
 TRN

CHECKED BY  
 TRN

SCALE  
 AS NOTED

ORIGINAL DATE  
 05-12-14

REVISION DATE

SHEET

**E100**

2014-08-14  
 PLATZ ASSOCIATES  
 ARCHITECTURAL/ENGINEERING