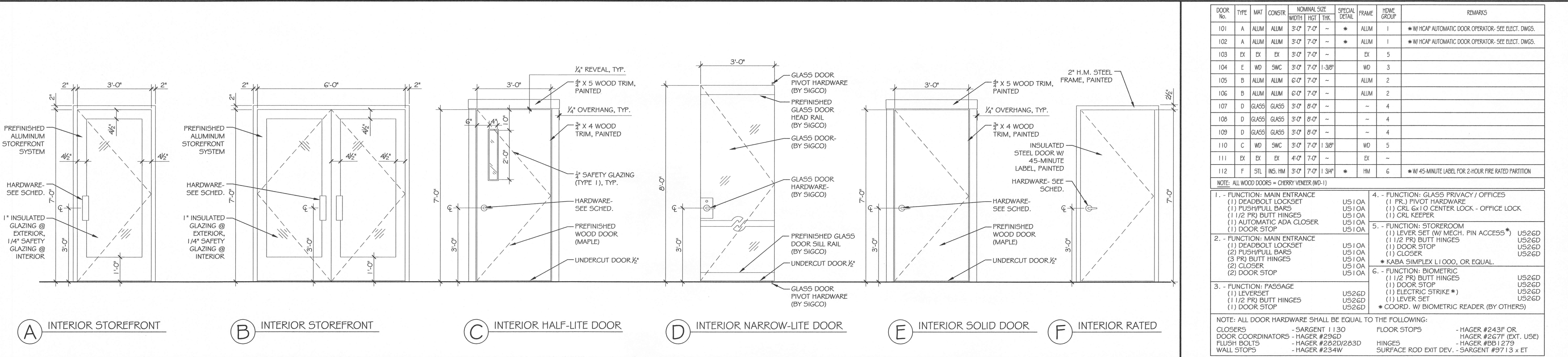


**5 WINDOW TYPES**

A100 SCALE: 3/8" = 1'-0"



**4 DOOR TYPES**

A100 SCALE: 3/8" = 1'-0"

DOOR No.	TYPE	MAT	CONSTR	NOMINAL SIZE	SPECIAL DETAIL	FRAME	HW GROUP	REMARKS
101	A	ALUM	ALUM	3'-0" x 7'-0"	-	ALUM	1	* W/HCAP AUTOMATIC DOOR OPERATOR-SEE ELEC. DWGS.
102	A	ALUM	ALUM	3'-0" x 7'-0"	-	ALUM	1	* W/HCAP AUTOMATIC DOOR OPERATOR-SEE ELEC. DWGS.
103	EX	EX	EX	3'-0" x 7'-0"	-	EX	5	
104	E	WD	SWC	3'-0" x 7'-0"	1-38"	WD	3	
105	B	ALUM	ALUM	6'-0" x 7'-0"	-	ALUM	2	
106	B	ALUM	ALUM	6'-0" x 7'-0"	-	ALUM	2	
107	D	GLASS	GLASS	3'-0" x 8'-0"	-	-	4	
108	D	GLASS	GLASS	3'-0" x 8'-0"	-	-	4	
109	D	GLASS	GLASS	3'-0" x 8'-0"	-	-	4	
110	C	WD	SWC	3'-0" x 7'-0"	1-38"	WD	5	
111	EX	EX	EX	4'-0" x 7'-0"	-	EX	-	
112	F	STL	INS. HM	3'-0" x 7'-0"	1-3/4"	HM	6	* W/45-MINUTE LABEL FOR 2-HOUR FIRE RATED PARTITION

NOTE: ALL WOOD DOORS = CHERRY VENEER (M0-1)

1. - FUNCTION: MAIN ENTRANCE  
 (1) DEADBOLT LOCKSET U51 0A  
 (1) PUSH/PULL BARS U51 0A  
 (1) 1/2 PRJ BUTT HINGES U51 0A  
 (1) AUTOMATIC ADA CLOSER U51 0A  
 (1) DOOR STOP U51 0A

2. - FUNCTION: MAIN ENTRANCE  
 (1) DEADBOLT LOCKSET U51 0A  
 (2) PUSH/PULL BARS U51 0A  
 (3) PRJ BUTT HINGES U51 0A  
 (2) CLOSER U51 0A  
 (2) DOOR STOP U51 0A

3. - FUNCTION: PASSAGE  
 (1) LEVERSET U526D  
 (1) 1/2 PRJ BUTT HINGES U526D  
 (1) DOOR STOP U526D

4. - FUNCTION: GLASS PRIVACY / OFFICES  
 (1) PR. PIVOT HARDWARE U51 0A  
 (1) CRL 6x10 CENTER LOCK - OFFICE LOCK U51 0A  
 (1) CRL-KEEPER U51 0A

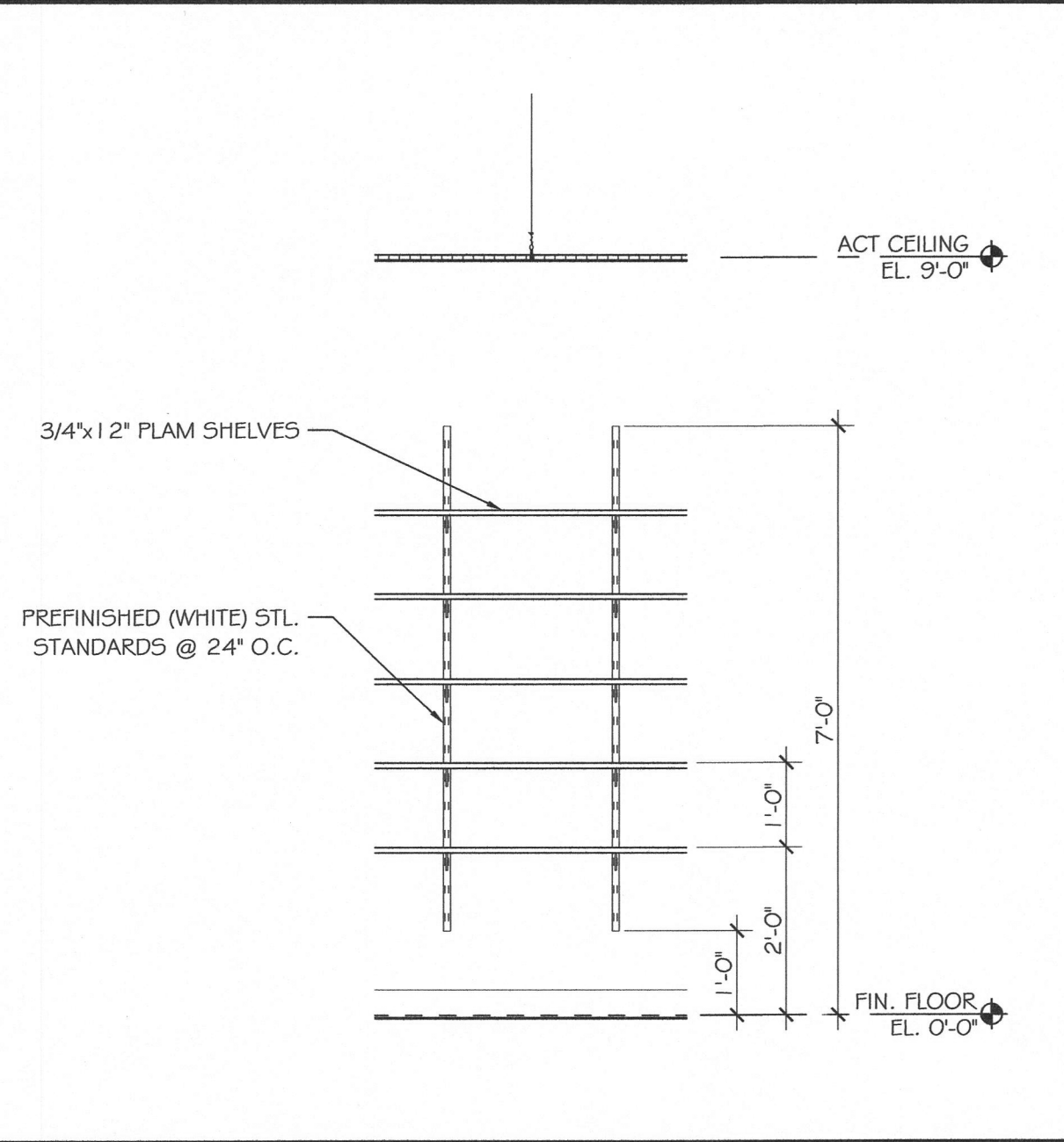
5. - FUNCTION: STOREROOM  
 (1) LEVER SET (W/MECH. PIN ACCESS) U526D  
 (1) DOOR STOP U526D  
 (1) CLOSER U526D  
 \* KABA SIMPLEX L1000, OR EQUAL.

6. - FUNCTION: BIOMETRIC  
 (1) 1/2 PRJ BUTT HINGES U526D  
 (1) DOOR STOP U526D  
 (1) ELECTRIC STRIKE \* U526D  
 (1) LEVER-SET U526D  
 \* COORD. W/ BIOMETRIC READER (BY OTHERS)

NOTE: ALL DOOR HARDWARE SHALL BE EQUAL TO THE FOLLOWING:  
 CLOSERS - SARGENT 1130 FLOOR STOPS - HAGER #243F OR  
 DOOR COORDINATORS - HAGER #296D HAGER #2677F (EXT. USE)  
 FLUSH BOLTS - HAGER #282D/283D HINGES - HAGER #BB1279  
 WALL STOPS - HAGER #234W SURFACE ROD EXIT DEV. - SARGENT #9713 x ET

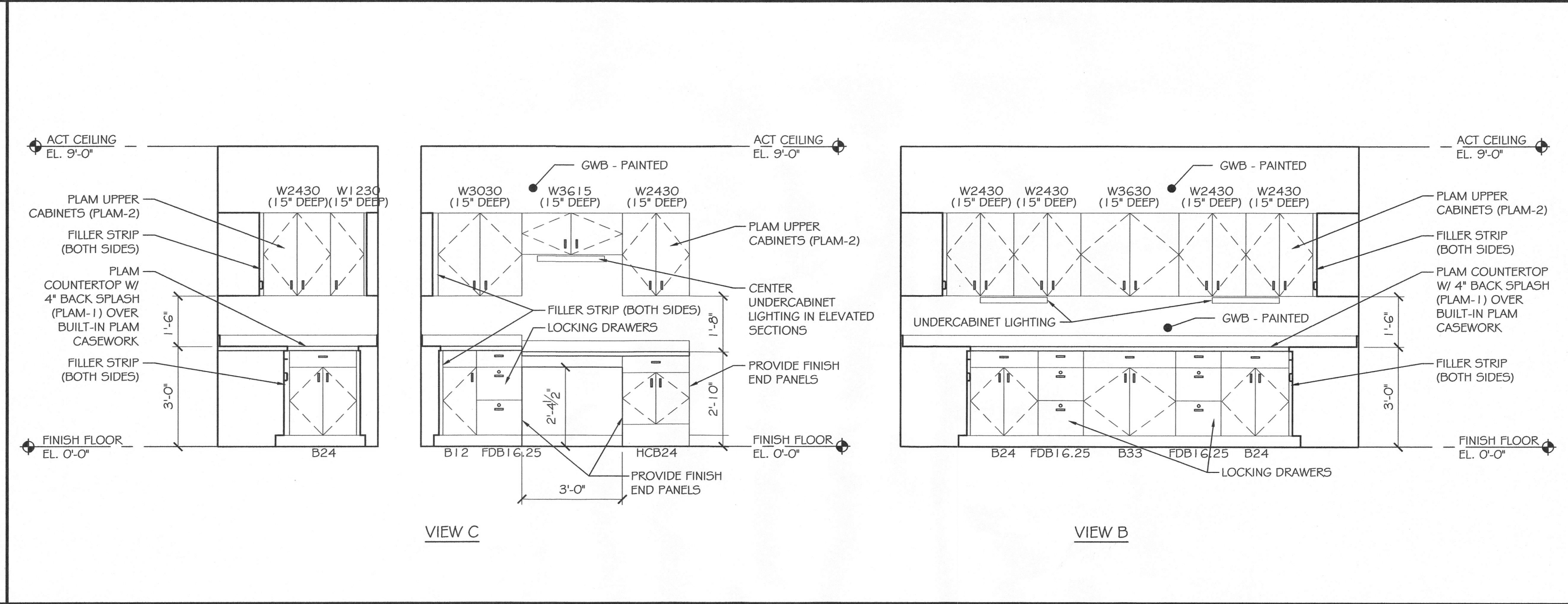
**3 DOOR & HARDWARE SCHEDULE**

A100 N.T.S.



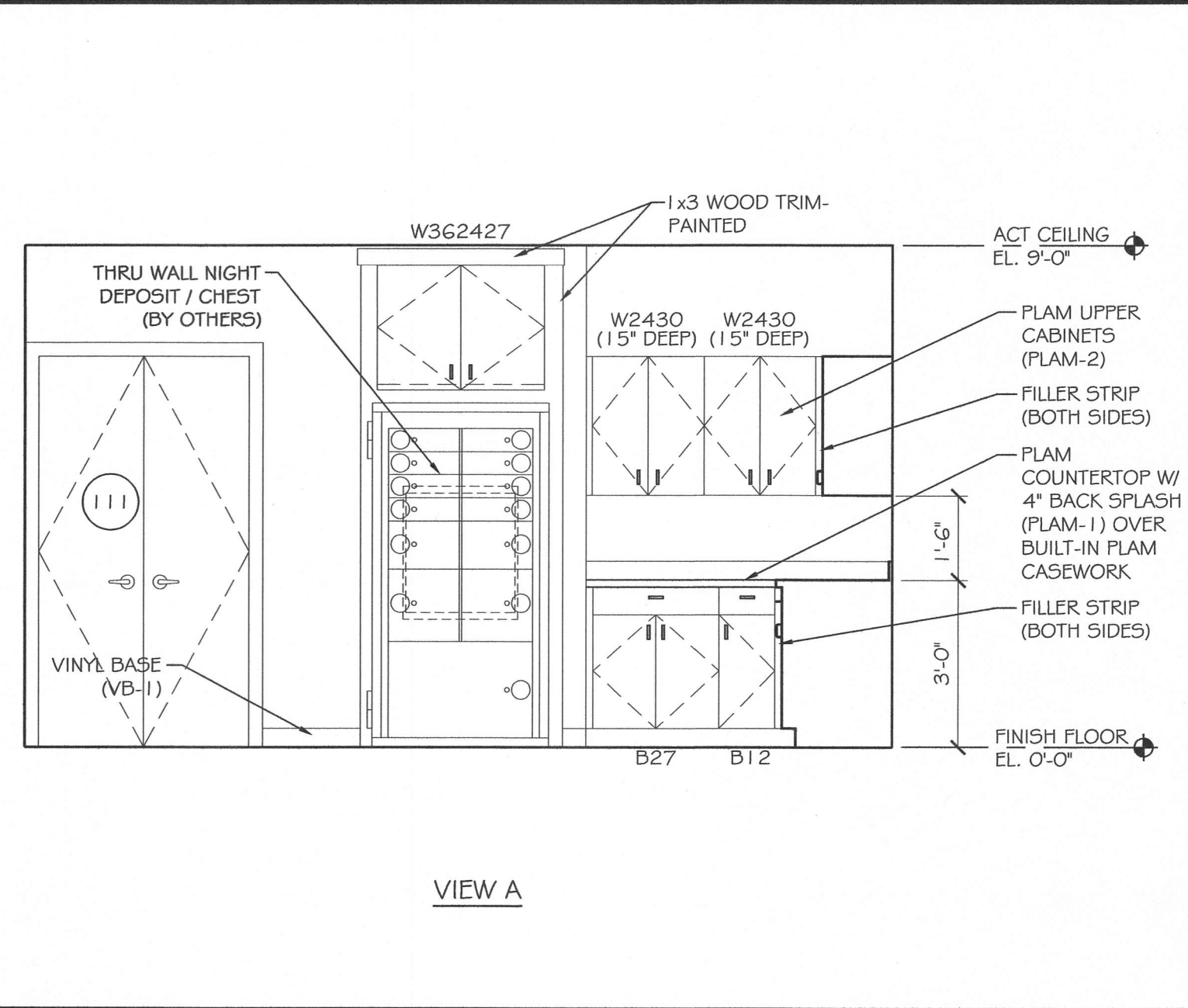
**2 STORAGE SHELVING DETAIL**

A100 SCALE: 1/2" = 1'-0"



**1 WORK ROOM (#107) ELEVATIONS**

A100 SCALE: 3/8" = 1'-0"



**INTERIOR DETAILS & SCHEDULES**

A100 SCALE: AS NOTED

Original Date: 05-12-14

Revision Date:

SHEET

**A600**

2014-08-08 09:00:00 ARCHITECTURAL A600

**PLATZ ASSOCIATES**  
 Architects - Engineers  
 Construction Managers  
 Tel 207-784-2941  
 Fax 207-784-3866  
 Two Great Falls Plaza, Auburn, Maine 04210

Construction of:  
**NORWAY SAVINGS BANK**  
 446 Forest Avenue  
 Portland, Maine 04101

REGISTERED ARCHITECT  
 THOMAS H. PLATZ  
 No. 1490  
 STATE OF MAINE

DRAWING STATUS  
 OFFICE REVIEW  
 CLIENT REVIEW  
 PERMIT REVIEW  
 BID SET  
 CONTRACT DRAWING  
 CONSTRUCTION

No drawing shall be recognized as a construction document unless it bears a blue inked registration seal.

SHEET TITLE  
**INTERIOR DETAILS & SCHEDULES**

JOB NO.  
**20142**

DRAWN BY  
**TRN**

CHECKED BY  
**TRN**

SCALE  
**AS NOTED**

ORIGINAL DATE  
**05-12-14**

REVISION DATE

**A600**