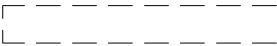

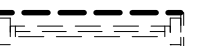

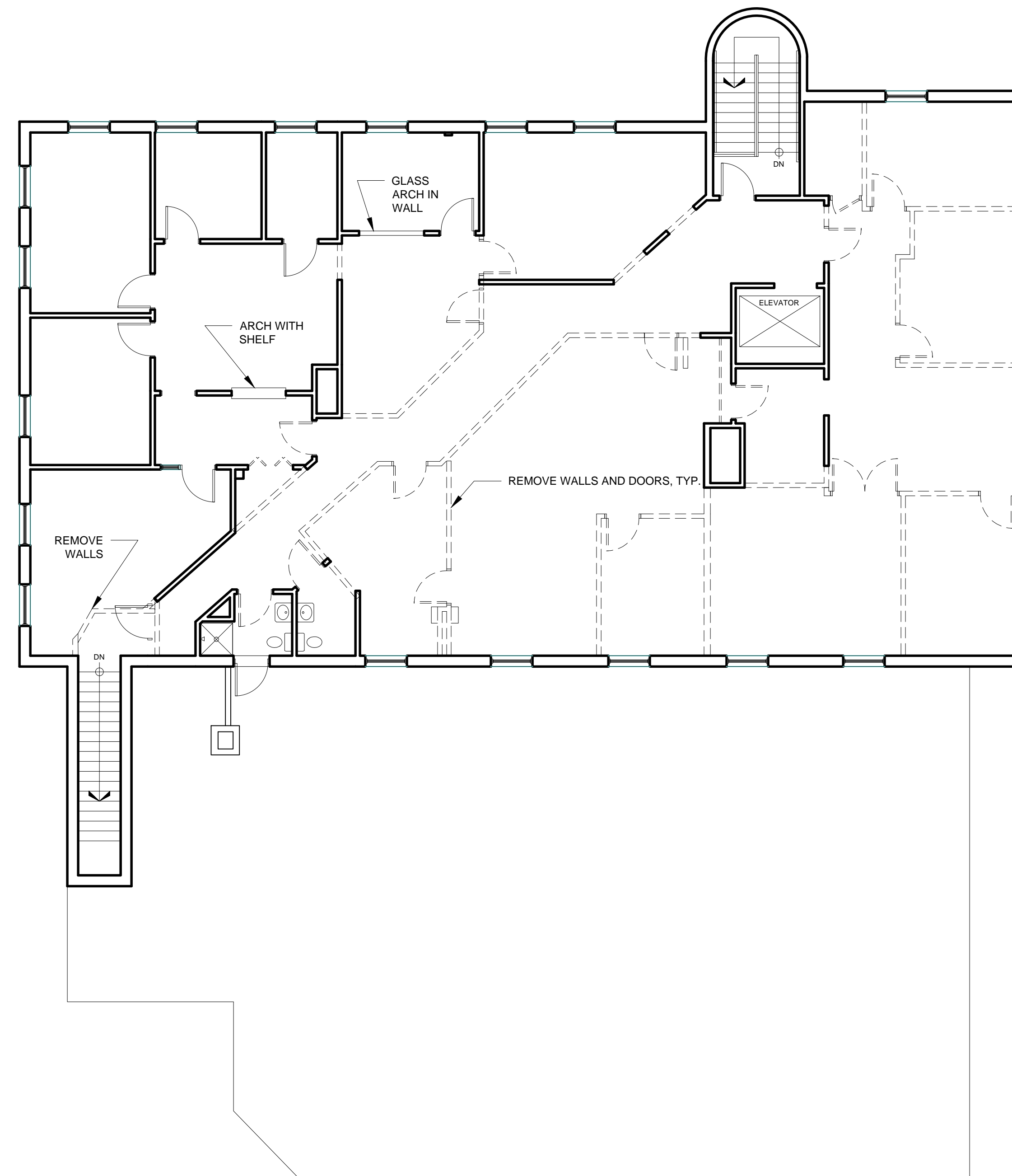


DEMOLITION NOTES:

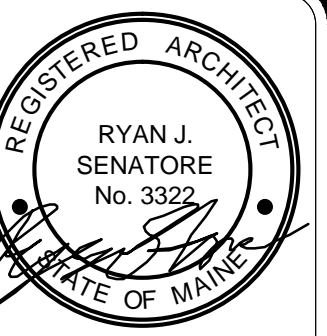
- 1.) ALL HAZARDOUS MATERIALS TO BE REMOVED AND DISPOSED OF IN ACCORDANCE WITH ALL FEDERAL, STATE AND LOCAL REGULATIONS.
- 2.) REMOVAL ALL UNUSED PLUMBING, ELECTRICAL, AND MECHANICAL ELEMENTS THAT ARE NOT PROPOSED TO BE REUSED
- 3.) REMOVE ALL CEILINGS AND STRAPPING TO JOISTS AS WELL AS ANY IN CEILING ELEMENTS SUCH AS INSULATION, ETC.
- 4.) IF ANY ELEMENTS TO BE REMOVED ARE FOUND TO BE STRUCTURAL, THE G.C. SHALL NOTIFY THE ARCHITECT IN WRITING PRIOR TO REMOVING SUCH ELEMENTS
- 5.) AT OFFICE WALLS, REMOVE ONE SIDE OF GWB FOR ADDITION OF SOUND BATTS

DEMOLITION LEGEND

-  WALL TO BE REMOVED
-  WALL STUDS AND SHEATHING TO REMAIN
-  WINDOW TO BE REMOVED
-  DOOR TO BE REMOVED



1 THIRD FLOOR DEMO PLAN  
1/8" = 1'-0"



© 2015 RYAN SENATORE ARCHITECTURE

UNITED INSURANCE AGENCY  
470 FOREST AVE.  
PORTLAND, MAINE



RYAN SENATORE  
ARCHITECTURE  
565 CONGRESS ST.  
PORTLAND, MAINE 04101  
207-650-6414  
senatorearchitecture.com

CONSULTANTS:

REVISIONS:

DATE: MARCH 31, 2015

PROJECT No. 1446

DRAWN BY: RRT / RJS

CHECKED BY: RJS

SCALE: AS NOTED

SHEET TITLE:  
THIRD FLOOR  
DEMO PLAN

AD1-3