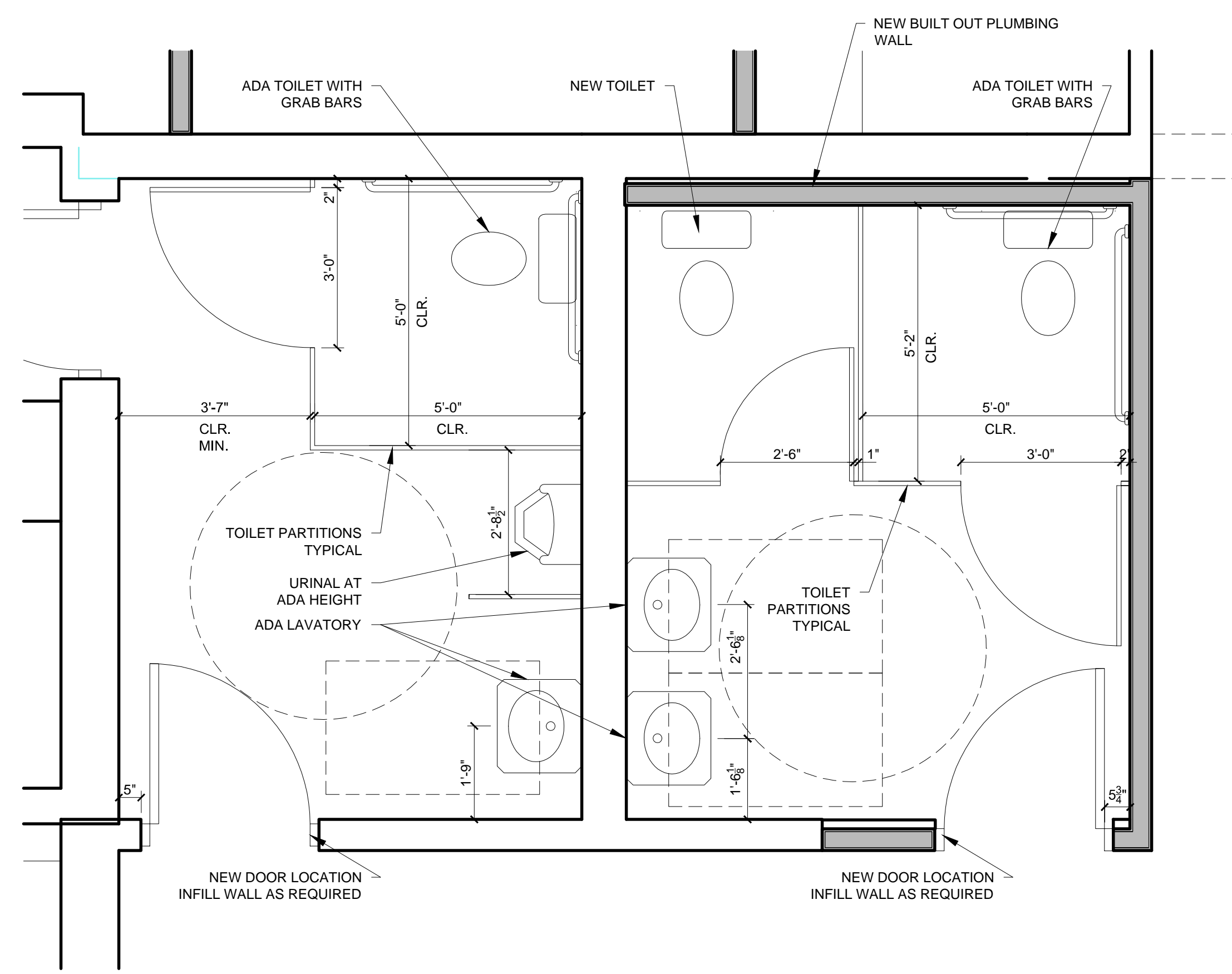
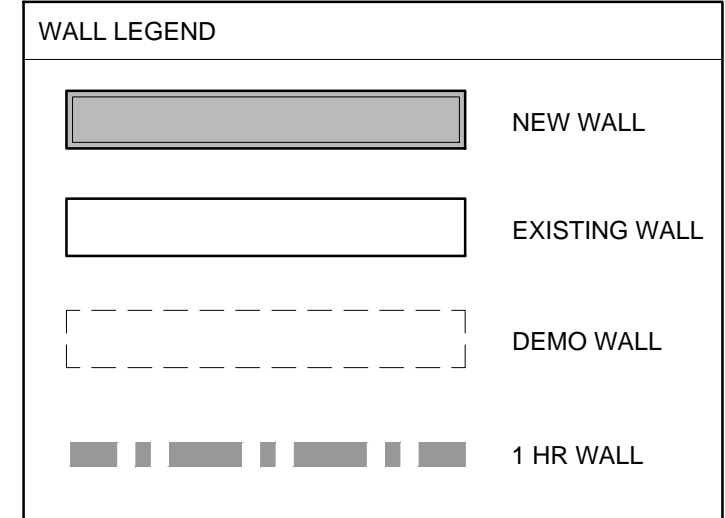
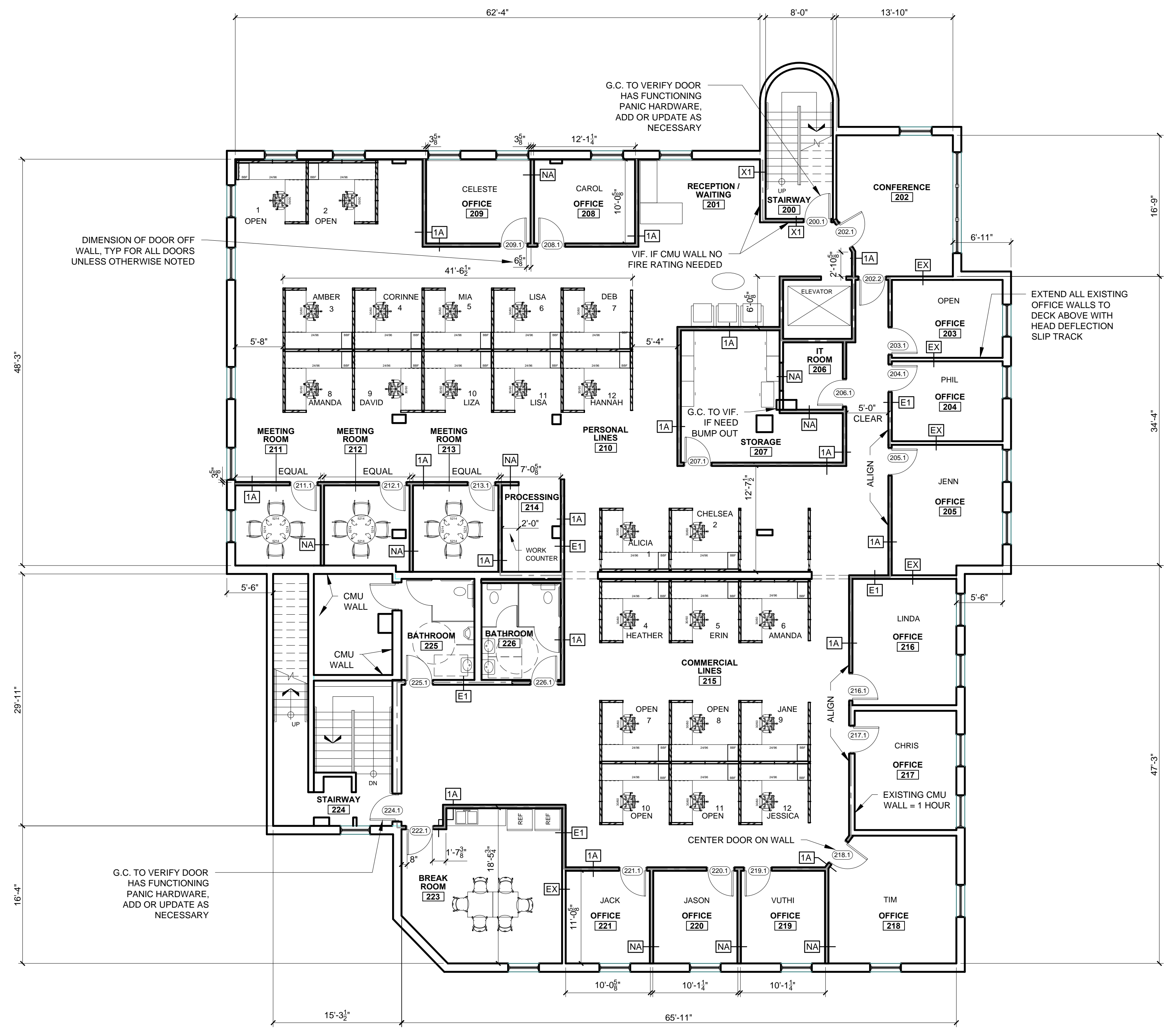


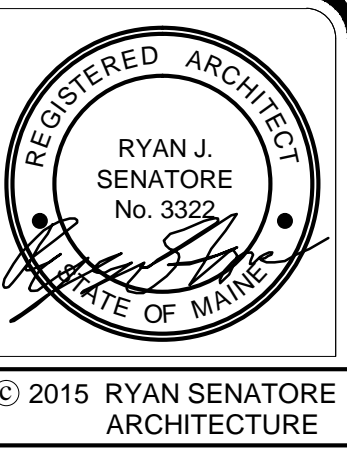
- PLAN NOTES**
- 1.) DIMENSIONS TO FRAMING AT NEW WALL CONSTRUCTION AND DIMENSIONS TO FACE OF WALL AT EXISTING CONSTRUCTION
 - 2.) FOR LOCATIONS OF EXTERIOR WINDOWS AND DOORS NOT DIMENSIONED ON THIS PLAN, SEE ENLARGED PLAN DETAILS AND DIMENSIONS TO LOCATE
 - 3.) G.C. TO CONFIRM ALL R.O. FRAMING DIMENSIONS INDICATED AROUND BUILT IN ELEMENTS AND SHOULD FIELD VERIFY ALL NEW WALLS PRIOR TO CONSTRUCTION
 - 4.) ALL NEW WALLS TO EXTEND TO DECK ABOVE WITH HEAD DEFLECTION SLIP TRACK (PROVIDE ACOUSTICAL SEALANT)
 - 5.) EXTEND ALL EXISTING OFFICE WALLS TO DECK ABOVE WITH HEAD DEFLECTION SLIP TRACK



2 ENLARGED BATHROOM PLANS 225 AND 226
1/2" = 1'-0"



1 SECOND FLOOR PLAN
1/8" = 1'-0"



UNITED INSURANCE AGENCY
470 FOREST AVE.
PORTLAND, MAINE



CONSULTANTS:

REVISIONS:

DATE: MARCH 31, 2015
PROJECT No. 1446
DRAWN BY: RRT / RJS
CHECKED BY: RJS
SCALE: AS NOTED

SHEET TITLE:
SECOND FLOOR PLAN

A1-2