

**FIRST MAINE**  
INVESTMENT PROPERTIES, INC.

---

477 CONGRESS STREET 5TH FLOOR PORTLAND, MAINE 04101-3406 TEL: 207-773-1998 FAX: 207-773-8597

Jessica Lorenz  
Franklin American Mortgage Company  
Suite 400  
501 Corporate Centre Drive  
Franklin, TN 37067

October 17, 2013

Re: re-use of existing sign attached to 470 Forest Avenue

Dear Ms. Lorenz;

Please be advised that Franklin American Mortgage Company has my permission to use the existing sign attached to 470 Forest Avenue. You occupy in excess of 68 linear feet of the building facing Forest Avenue on the first floor.

Very truly yours,

A handwritten signature in black ink, appearing to read 'David S. Glaser', is written over the typed name.

David S. Glaser

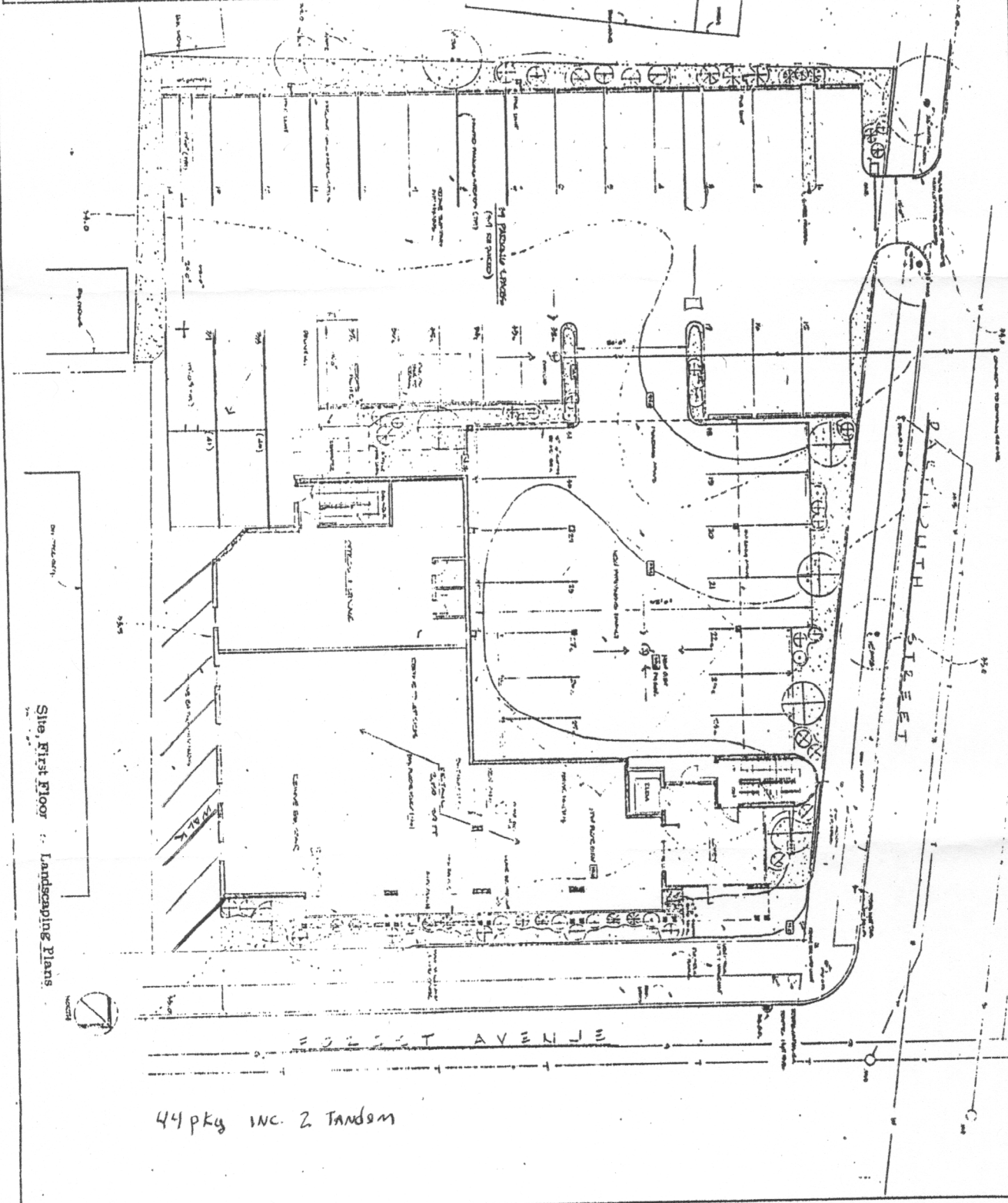
1. THE ARCHITECT'S PROFESSIONAL LIABILITY INSURANCE POLICY DOES NOT COVER THE ARCHITECT'S LIABILITY FOR NEGLIGENCE IN THE PERFORMANCE OF HIS PROFESSIONAL SERVICES. THE ARCHITECT'S PROFESSIONAL LIABILITY INSURANCE POLICY DOES NOT COVER THE ARCHITECT'S LIABILITY FOR NEGLIGENCE IN THE PERFORMANCE OF HIS PROFESSIONAL SERVICES. THE ARCHITECT'S PROFESSIONAL LIABILITY INSURANCE POLICY DOES NOT COVER THE ARCHITECT'S LIABILITY FOR NEGLIGENCE IN THE PERFORMANCE OF HIS PROFESSIONAL SERVICES.

2. THE ARCHITECT'S PROFESSIONAL LIABILITY INSURANCE POLICY DOES NOT COVER THE ARCHITECT'S LIABILITY FOR NEGLIGENCE IN THE PERFORMANCE OF HIS PROFESSIONAL SERVICES. THE ARCHITECT'S PROFESSIONAL LIABILITY INSURANCE POLICY DOES NOT COVER THE ARCHITECT'S LIABILITY FOR NEGLIGENCE IN THE PERFORMANCE OF HIS PROFESSIONAL SERVICES. THE ARCHITECT'S PROFESSIONAL LIABILITY INSURANCE POLICY DOES NOT COVER THE ARCHITECT'S LIABILITY FOR NEGLIGENCE IN THE PERFORMANCE OF HIS PROFESSIONAL SERVICES.

3. THE ARCHITECT'S PROFESSIONAL LIABILITY INSURANCE POLICY DOES NOT COVER THE ARCHITECT'S LIABILITY FOR NEGLIGENCE IN THE PERFORMANCE OF HIS PROFESSIONAL SERVICES. THE ARCHITECT'S PROFESSIONAL LIABILITY INSURANCE POLICY DOES NOT COVER THE ARCHITECT'S LIABILITY FOR NEGLIGENCE IN THE PERFORMANCE OF HIS PROFESSIONAL SERVICES. THE ARCHITECT'S PROFESSIONAL LIABILITY INSURANCE POLICY DOES NOT COVER THE ARCHITECT'S LIABILITY FOR NEGLIGENCE IN THE PERFORMANCE OF HIS PROFESSIONAL SERVICES.

4. THE ARCHITECT'S PROFESSIONAL LIABILITY INSURANCE POLICY DOES NOT COVER THE ARCHITECT'S LIABILITY FOR NEGLIGENCE IN THE PERFORMANCE OF HIS PROFESSIONAL SERVICES. THE ARCHITECT'S PROFESSIONAL LIABILITY INSURANCE POLICY DOES NOT COVER THE ARCHITECT'S LIABILITY FOR NEGLIGENCE IN THE PERFORMANCE OF HIS PROFESSIONAL SERVICES. THE ARCHITECT'S PROFESSIONAL LIABILITY INSURANCE POLICY DOES NOT COVER THE ARCHITECT'S LIABILITY FOR NEGLIGENCE IN THE PERFORMANCE OF HIS PROFESSIONAL SERVICES.

5. THE ARCHITECT'S PROFESSIONAL LIABILITY INSURANCE POLICY DOES NOT COVER THE ARCHITECT'S LIABILITY FOR NEGLIGENCE IN THE PERFORMANCE OF HIS PROFESSIONAL SERVICES. THE ARCHITECT'S PROFESSIONAL LIABILITY INSURANCE POLICY DOES NOT COVER THE ARCHITECT'S LIABILITY FOR NEGLIGENCE IN THE PERFORMANCE OF HIS PROFESSIONAL SERVICES. THE ARCHITECT'S PROFESSIONAL LIABILITY INSURANCE POLICY DOES NOT COVER THE ARCHITECT'S LIABILITY FOR NEGLIGENCE IN THE PERFORMANCE OF HIS PROFESSIONAL SERVICES.



Site, First Floor Landscaping Plans

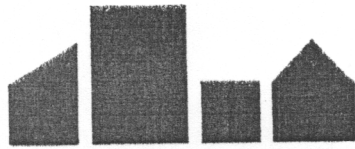
44 PKY INC. 2 TANDON

TITLE  
DATE  
DRAWN BY  
CHECKED BY  
DATE  
SCALE

PRELIMINARY  
DESIGN SCHEMATICS  
FOR  
OFFICES  
470 ROBERT AVENUE

GREGORY K. JOHNSON  
ARCHITECT  
619 CONGRESS STREET  
PORTLAND, MAINE

REVISIONS

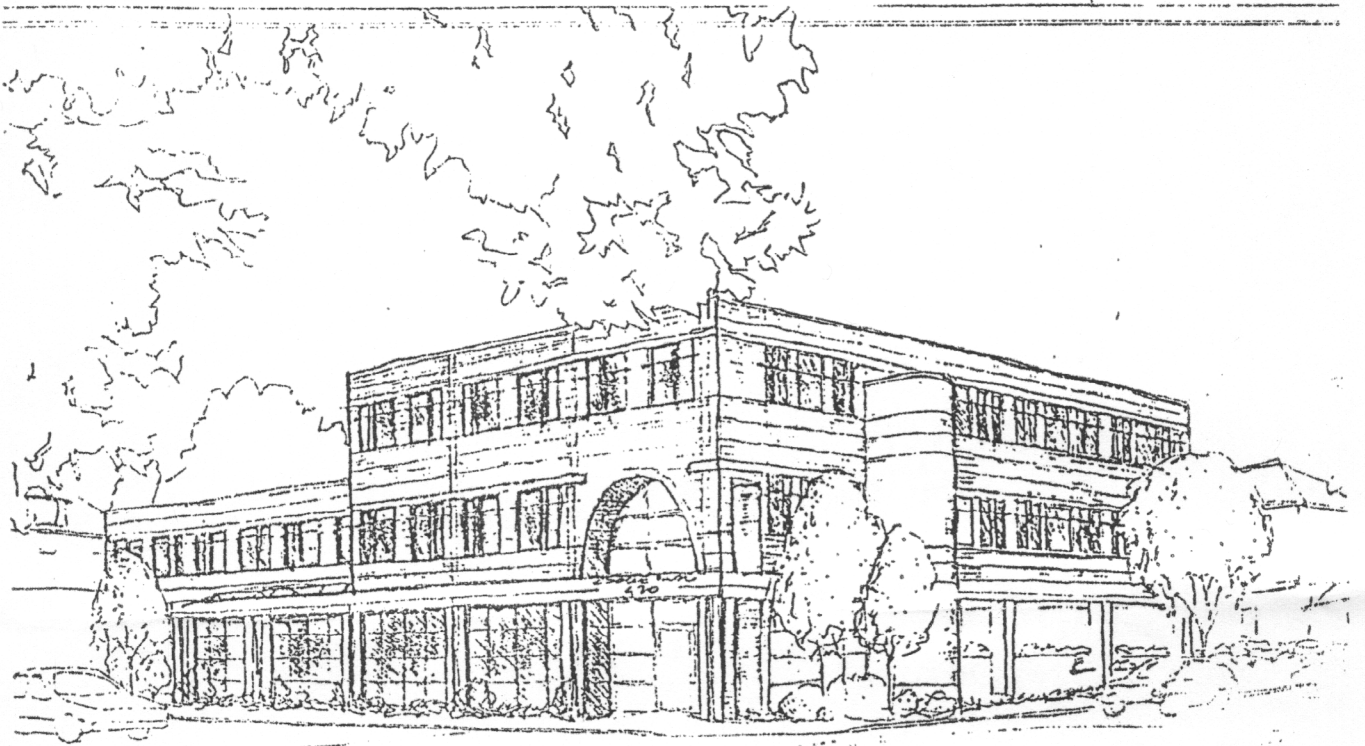


**BRIDE EPSTEIN REAL ESTATE**

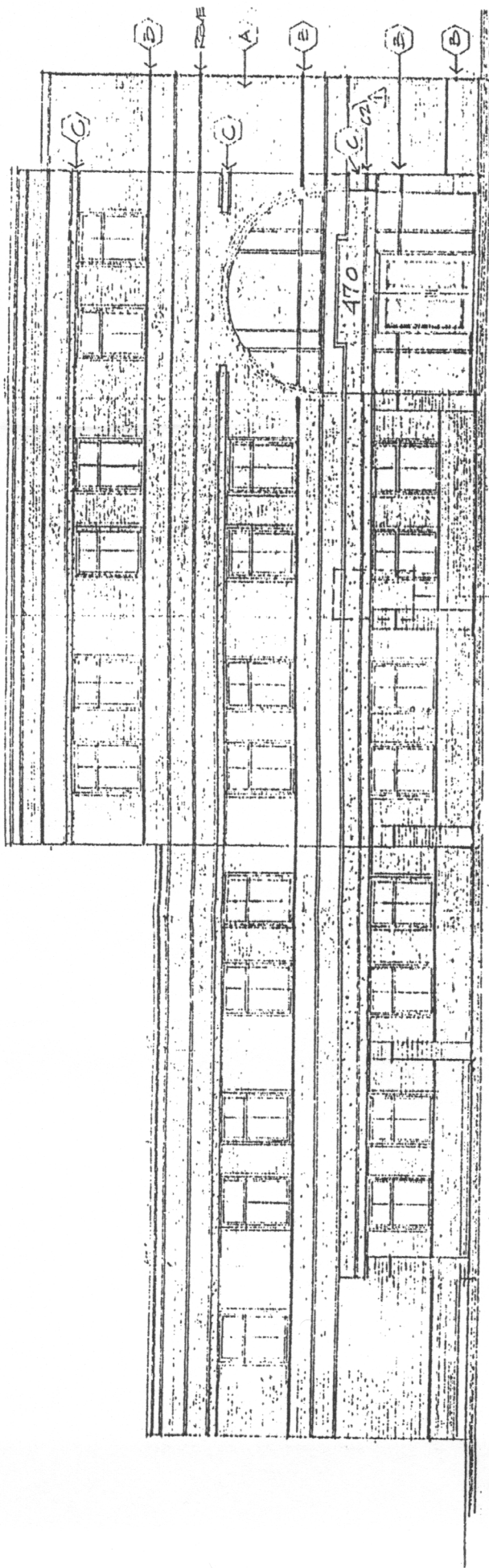
FOR LEASE

470 FOREST AVENUE  
PORTLAND, MAINE

*Master  
with  
Notes*



A PARTNERSHIP OF CORPORATIONS  
42 MARKET STREET ■ PORTLAND, MAINE 04101 ■ (207) 775-2288  
45 OAK STREET ■ P.O. BOX 2444 ■ BANGOR, MAINE 04401 ■ (207) 945-6222



NORTH EAST ELEVATION

MASONRY TYPES AND COLORS - 470 FOREST AVE.

16 PAGES OF 11.10.20.07

**CITY OF PORTLAND**  
**REAL ESTATE PROPERTY TAX STATEMENT**

**FY 2013**

July 1, 2012 - June 30, 2013

<b>DUE SEPT 7, 2012</b> \$16,603.95	<b>DUE MARCH 8, 2013</b> \$16,603.95	<b>AMOUNT PAID</b> \$0.00	<b>INTEREST DUE</b> \$0.00	<b>PAY THIS AMOUNT</b> \$16,603.95
--	---	------------------------------	-------------------------------	---------------------------------------

**First Billing**  
 116 - A-001-001

ACCOUNT NUMBER 16146

CBL: 116 - A-001-001

Assessed Property Description  
 116-A-1-2  
 FOREST AVE 470-478  
 DARTMOUTH ST 72-76  
 11647 SF

RE 116 - A-001-001  
 470 FOREST AVENUE ASSOCIATES

477 CONGRESS ST FL 5  
 PORTLAND ME 04101

*Mailed  
 8-8-12*

BRING COMPLETE TAX BILL WHEN  
 PAYING IN PERSON

Please Make Your Check Payable to:  
 City of Portland

PARTIAL PAYMENTS MAY BE MADE  
 AT ANY TIME

DEBIT AND CREDIT CARDS ACCEPTED  
 SUBJECT TO CONVENIENCE FEE

Change of Address  
 Name: \_\_\_\_\_

**RETURN THIS TOP PORTION WITH PAYMENT**

**KEEP THIS PORTION**

2013  
 REAL ESTATE PROPERTY TAX STATEMENT  
 City of Portland

Fiscal Year  
 July 1, 2012 - June 30, 2013  
 Owner of Record as of April 1, 2012  
 470 FOREST AVENUE ASSOCIATES  
 477 CONGRESS ST FL 5  
 PORTLAND ME 04101

ACCOUNT NUMBER

16146

CBL

116 - A-001-001

Acres:

0.267

Assessed Property Description  
 116-A-1-2  
 FOREST AVE 470-478  
 DARTMOUTH ST 72-76  
 11647 SF

116 - A-001-001

Date of Sale: \_\_\_\_\_

**CURRENT BILLING DISTRIBUTION**

Education	\$16,902.82
Public Safety	\$4,981.19
Debt Service	\$4,449.86
Public Services	\$2,855.88
General Government	\$166.04
Recreation & Facil. Mgmt	\$730.57
County Tax	\$1,062.65
Library	\$830.20
Metro	\$564.53
Health & Human Services	\$664.16
Enterprise Funds	\$0.00

**CURRENT BILLING INFORMATION**

Land Value	\$175,900.00
Building Value	\$1,588,600.00
Total Value	\$1,764,500.00
Exemptions	\$0.00
Homestead	\$0.00
Taxable Value	\$1,764,500.00
Tax Rate	18.82
TOTAL TAX	\$33,207.90
AMOUNT PAID	\$0.00

Change of Ownership

**PLEASE KEEP A COPY OF THIS BILL IF YOU INTEND TO PARTICIPATE  
 IN THE MAINE CIRCUIT BREAKER PROGRAM**

**Remittance Instructions**

To avoid standing in line, it is recommended that taxes be paid by mail. Please make check or money order payable to: **CITY OF PORTLAND.**

Use enclosed envelope to mail in your payment.

Use right top margin for change of address.

Remit To **CITY OF PORTLAND, MAINE**  
**FINANCE DEPARTMENT**  
**TREASURY AND COLLECTION DIVISION**  
**P O BOX 544**  
**PORTLAND, ME 04112-0544**

Former Owner Name: \_\_\_\_\_  
 New Owner Name: \_\_\_\_\_  
 New Owner Address: \_\_\_\_\_

*Please see the backside for important information.*