



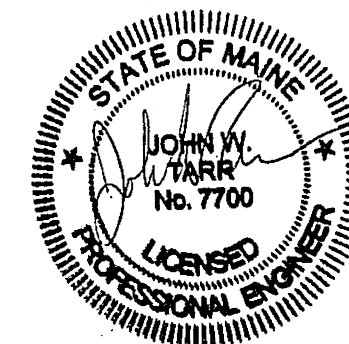
Auburn, ME
207.784.5100
Portland, ME
207.775.0053
Manchester, NH
603.626.1242

HARRIMAN

UNIVERSITY OF
SOUTHERN MAINE
ABROMSON CENTER
FIRST FLOOR RENO
PROJECT 2015-011.2

PORTLAND, ME

HA Project No. 15317-02



Date 05-19-15

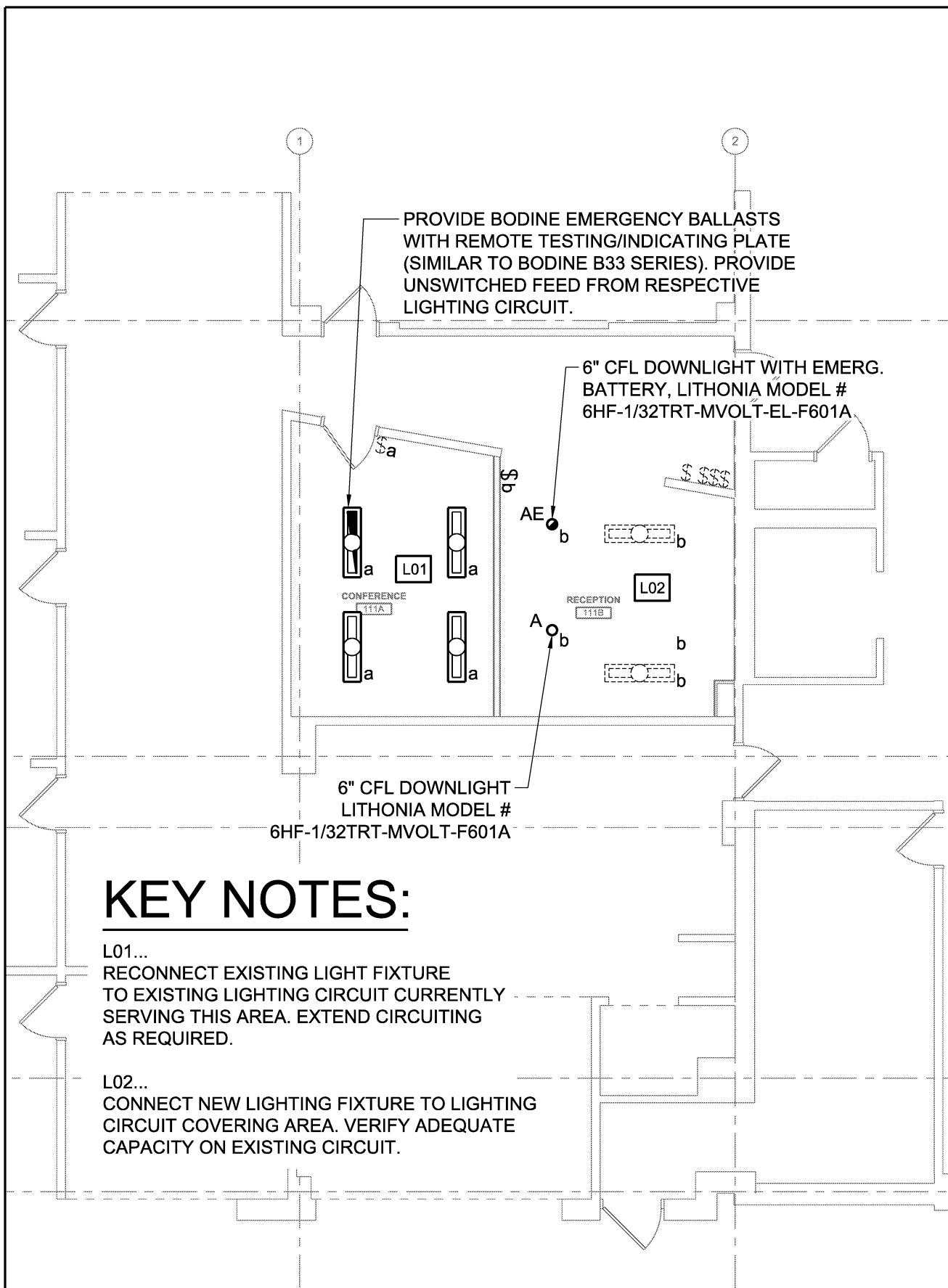
Scale 1/8"=1'-0"

05-19-15 - ISSUED FOR BID

© 2015 Harriman Associates

ABROMSON CENTER
FIRST FLOOR PLAN
LIGHTING AND POWER

E10.1



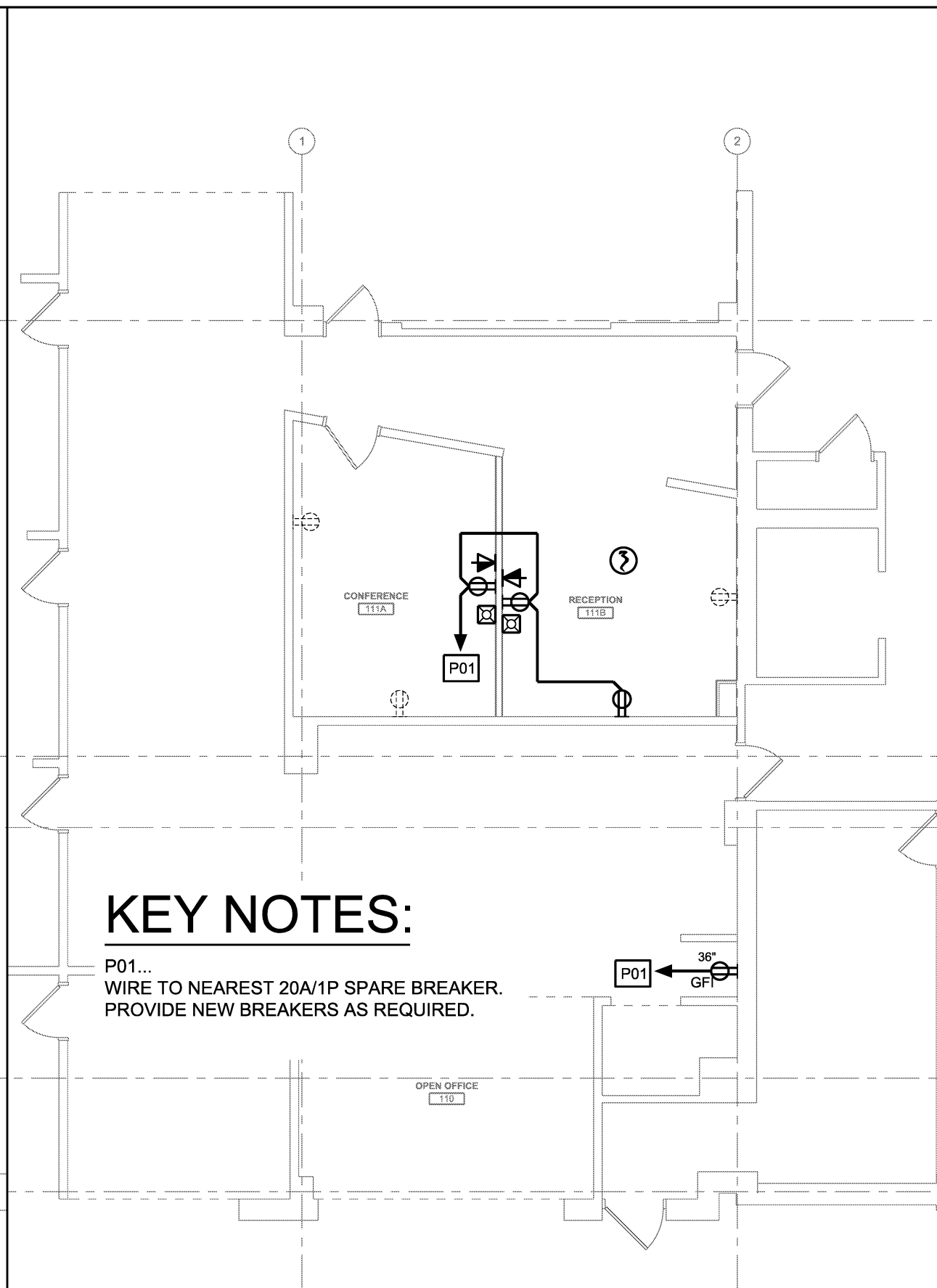
KEY NOTES:

L01...
RECONNECT EXISTING LIGHT FIXTURE
TO EXISTING LIGHTING CIRCUIT CURRENTLY
SERVING THIS AREA. EXTEND CIRCUITING
AS REQUIRED.

L02...
CONNECT NEW LIGHTING FIXTURE TO LIGHTING
CIRCUIT COVERING AREA. VERIFY ADEQUATE
CAPACITY ON EXISTING CIRCUIT.

1 LIGHTING

SCALE: 1/8" = 1'-0"



KEY NOTES:

P01...
WIRE TO NEAREST 20A/1P SPARE BREAKER.
PROVIDE NEW BREAKERS AS REQUIRED.

2 POWER

SCALE: 1/8" = 1'-0"