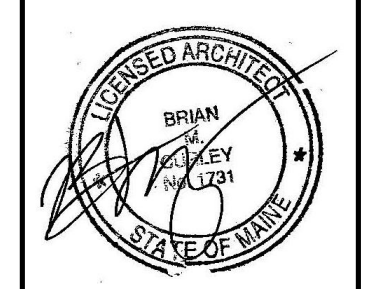


No.	Date	Description
		Revision Schedule



JOB NO.
080316

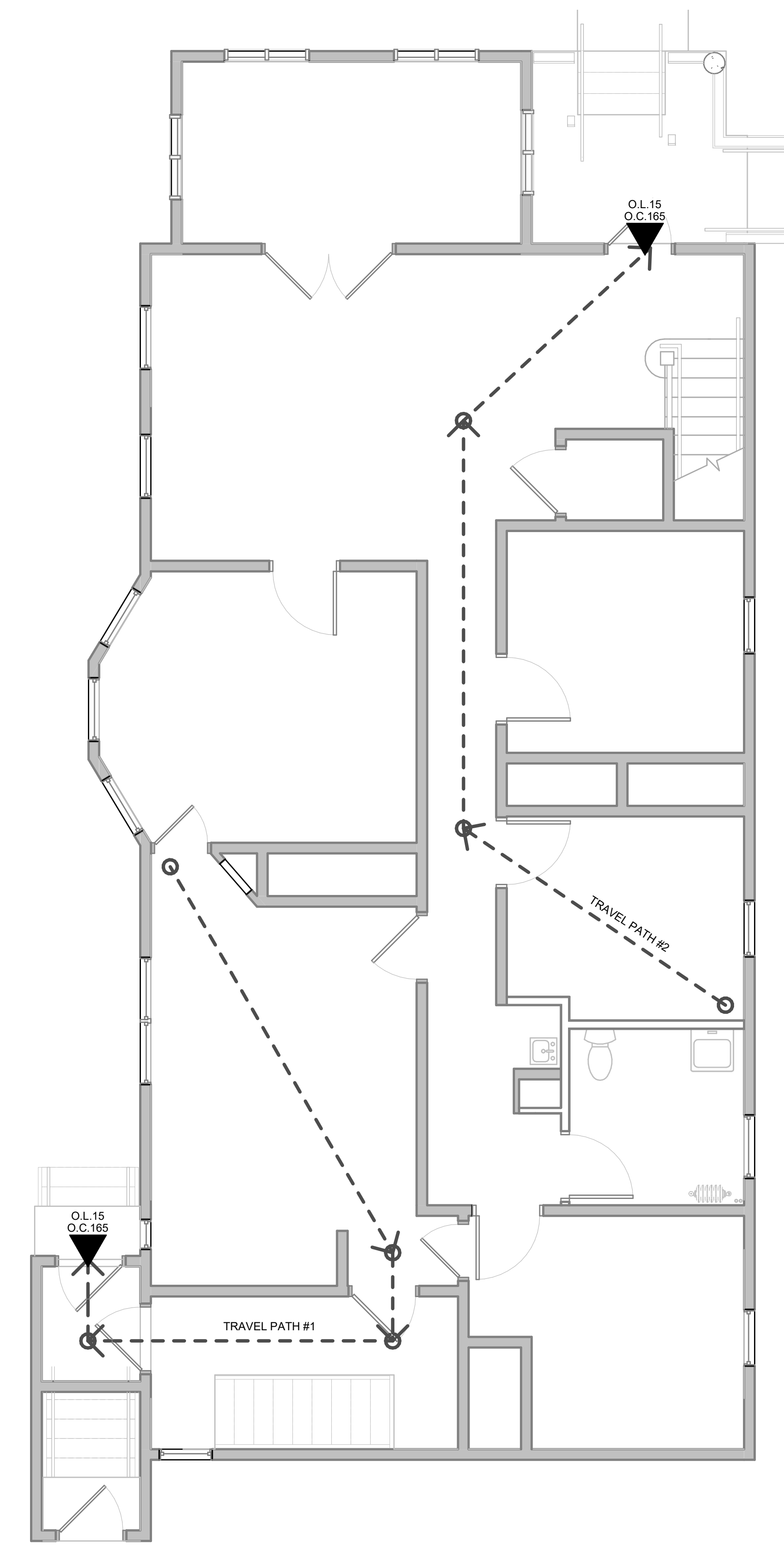
DRWN. CHK
Checker

SCALE:
1/4" = 1'-0"

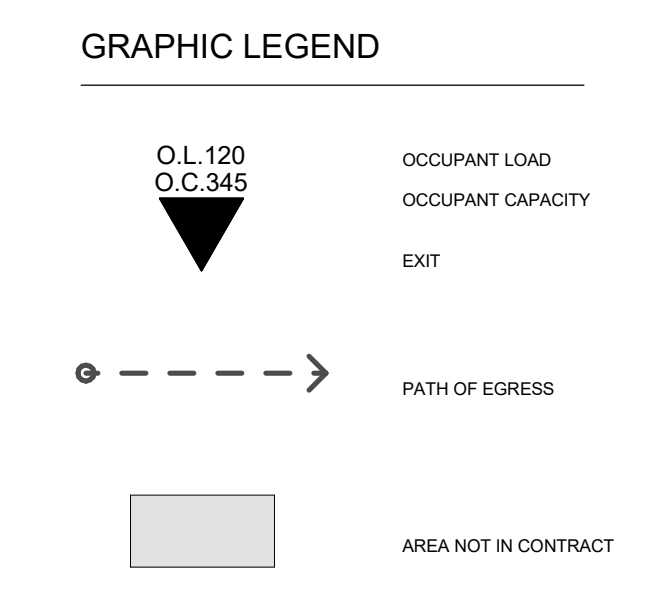
ISSUE
11/17/17

TITLE
Life Safety Plans
and Code
Summary

SHEET
A003



Egress-Travel Path Schedule	
Travel Path ID	Travel Distance
	0'
Travel Path #1	43' - 4 17/32"
Travel Path #2	46' - 1 1/2"



Summary

The building consists of an existing single occupant 2 story wood frame and structure served by 2 stairs.

The project consists of the renovation of 1,470 sf of 1st floor business use space to meet ADA guidelines.

IBC 2009

OCCUPANCY CLASSIFICATION GROUPS:
Business Group B per 304.1

CONSTRUCTION TYPE:
V-B

FIRE PROTECTION SYSTEMS:
Existing fire alarm system.

OCCUPANT LOAD:
Occupant Load of B Occupancy:
Level 1 - 1,470 GSF/100 = 15 Occupants

MEANS OF EGRESS:

Egress width: Corridors/doors @ 0.2'/person (min. 44" in Business occupancy)

Door width: Min. clear 32" Max leaf 48"
Common path of travel: Business IBC 1014.3 - Shall not exceed 100'

Number of exits: Two exits or exit access from any space with greater than 50 person occupancy or where common path of travel distance is exceeded.

Distance to an exit: Business 200 ft (unsprinklered)
Dead end: Business 20 ft

NFPA 101 2009

Partial renovation of an existing building with B Occupancy.

OCCUPANCY CLASSIFICATION GROUPS:
Business per 3.3.178.3

CONSTRUCTION TYPE:
Existing Construction - Type V (000)

FIRE PROTECTION SYSTEMS:
Existing Sprinkler System.

OCCUPANT LOAD:
Occupant Load of B Occupancy:
Level 1 - 1,470 GSF/100 = 15 Occupants

NFPA CHAPTERS
Chapter 39 Existing Business Occupancy

MEANS OF EGRESS:

7.3.2.1(1) Exits - Existing to remain
7.2.1.6.2 Access - controlled egress doors - Doors shall be arranged to unlock in the direction of travel.

EXTINGUISHMENT REQUIREMENTS:

9.7.4.1 Manual extinguishing equipment - Class A Hazard - Light/low hazard
Occupancy - Table 6.2.1.1 Distance to fire extinguisher: 75ft

TRAVEL DISTANCE

39.2.5.2 Dead End Corridors - Limited to 50 ft.
39.2.5.3.1 Common path of travel - Limited to 100'
39.2.6.2 Travel distance - Limited to 200 ft. (unsprinklered)

1 Life Safety Plan
1/4" = 1'-0"