

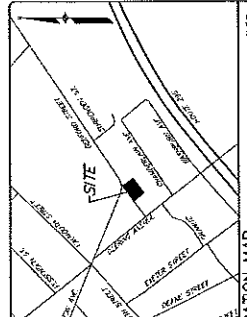
EXISTING CONDITIONS PLAN
 UNIVERSITY OF MAINE PROPERTIES
 PORTLAND, MAINE 04101
 PDI ARCHITECTS
 PORTLAND, MAINE 04101
 DATE: 10/06/08
 DRAWN BY: JLM

SEBAGO TECHNICAL

3450 BROADWAY
 PORTLAND, ME 04101
 TEL: 207-763-5999

SHEET 1 OF 1

SCALE: 1" = 10'

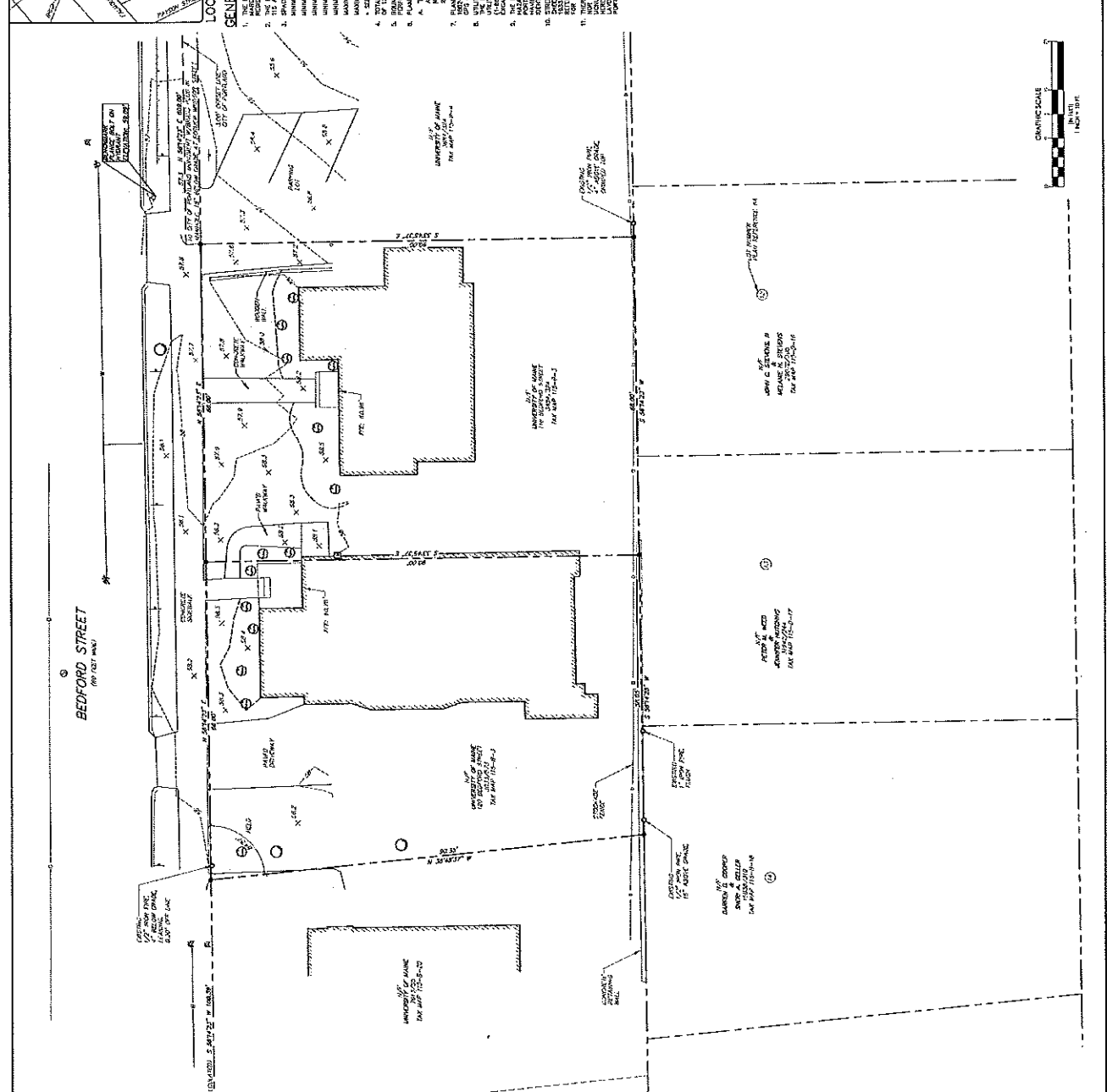


- GENERAL NOTES:**
- THE SURVEYOR HAS BEEN ADVISED BY THE UNIVERSITY OF MAINE THAT THE EXISTING PROPERTY LINES ARE SHOWN ON THE RECORD MAP AS SHOWN ON THE RECORD MAP AND THE RECORD MAP IS THE BASIS FOR THE SURVEY.
 - THE SURVEYOR HAS BEEN ADVISED BY THE UNIVERSITY OF MAINE THAT THE EXISTING PROPERTY LINES ARE SHOWN ON THE RECORD MAP AS SHOWN ON THE RECORD MAP AND THE RECORD MAP IS THE BASIS FOR THE SURVEY.
 - THE SURVEYOR HAS BEEN ADVISED BY THE UNIVERSITY OF MAINE THAT THE EXISTING PROPERTY LINES ARE SHOWN ON THE RECORD MAP AS SHOWN ON THE RECORD MAP AND THE RECORD MAP IS THE BASIS FOR THE SURVEY.
 - THE SURVEYOR HAS BEEN ADVISED BY THE UNIVERSITY OF MAINE THAT THE EXISTING PROPERTY LINES ARE SHOWN ON THE RECORD MAP AS SHOWN ON THE RECORD MAP AND THE RECORD MAP IS THE BASIS FOR THE SURVEY.
 - THE SURVEYOR HAS BEEN ADVISED BY THE UNIVERSITY OF MAINE THAT THE EXISTING PROPERTY LINES ARE SHOWN ON THE RECORD MAP AS SHOWN ON THE RECORD MAP AND THE RECORD MAP IS THE BASIS FOR THE SURVEY.
 - THE SURVEYOR HAS BEEN ADVISED BY THE UNIVERSITY OF MAINE THAT THE EXISTING PROPERTY LINES ARE SHOWN ON THE RECORD MAP AS SHOWN ON THE RECORD MAP AND THE RECORD MAP IS THE BASIS FOR THE SURVEY.
 - THE SURVEYOR HAS BEEN ADVISED BY THE UNIVERSITY OF MAINE THAT THE EXISTING PROPERTY LINES ARE SHOWN ON THE RECORD MAP AS SHOWN ON THE RECORD MAP AND THE RECORD MAP IS THE BASIS FOR THE SURVEY.
 - THE SURVEYOR HAS BEEN ADVISED BY THE UNIVERSITY OF MAINE THAT THE EXISTING PROPERTY LINES ARE SHOWN ON THE RECORD MAP AS SHOWN ON THE RECORD MAP AND THE RECORD MAP IS THE BASIS FOR THE SURVEY.
 - THE SURVEYOR HAS BEEN ADVISED BY THE UNIVERSITY OF MAINE THAT THE EXISTING PROPERTY LINES ARE SHOWN ON THE RECORD MAP AS SHOWN ON THE RECORD MAP AND THE RECORD MAP IS THE BASIS FOR THE SURVEY.
 - THE SURVEYOR HAS BEEN ADVISED BY THE UNIVERSITY OF MAINE THAT THE EXISTING PROPERTY LINES ARE SHOWN ON THE RECORD MAP AS SHOWN ON THE RECORD MAP AND THE RECORD MAP IS THE BASIS FOR THE SURVEY.
 - THE SURVEYOR HAS BEEN ADVISED BY THE UNIVERSITY OF MAINE THAT THE EXISTING PROPERTY LINES ARE SHOWN ON THE RECORD MAP AS SHOWN ON THE RECORD MAP AND THE RECORD MAP IS THE BASIS FOR THE SURVEY.
 - THE SURVEYOR HAS BEEN ADVISED BY THE UNIVERSITY OF MAINE THAT THE EXISTING PROPERTY LINES ARE SHOWN ON THE RECORD MAP AS SHOWN ON THE RECORD MAP AND THE RECORD MAP IS THE BASIS FOR THE SURVEY.
 - THE SURVEYOR HAS BEEN ADVISED BY THE UNIVERSITY OF MAINE THAT THE EXISTING PROPERTY LINES ARE SHOWN ON THE RECORD MAP AS SHOWN ON THE RECORD MAP AND THE RECORD MAP IS THE BASIS FOR THE SURVEY.
 - THE SURVEYOR HAS BEEN ADVISED BY THE UNIVERSITY OF MAINE THAT THE EXISTING PROPERTY LINES ARE SHOWN ON THE RECORD MAP AS SHOWN ON THE RECORD MAP AND THE RECORD MAP IS THE BASIS FOR THE SURVEY.
 - THE SURVEYOR HAS BEEN ADVISED BY THE UNIVERSITY OF MAINE THAT THE EXISTING PROPERTY LINES ARE SHOWN ON THE RECORD MAP AS SHOWN ON THE RECORD MAP AND THE RECORD MAP IS THE BASIS FOR THE SURVEY.

SURVEYOR'S STATEMENT

I, *[Signature]*, a duly licensed and bonded Professional Land Surveyor, State of Maine, do hereby certify that the foregoing is a true and correct representation of the actual conditions of the land shown on the attached drawing as shown by the actual measurements taken by me or by a duly licensed and bonded Professional Land Surveyor under my supervision and control and that I am a duly licensed and bonded Professional Land Surveyor, State of Maine, and that I am a member in good standing of the Maine Board of Licensure for Professional Land Surveyors.

DATE: 10/06/08



LEGEND

BOUNDARY LINE	INTERIOR WALL
EXTERIOR WALL	DOOR
WINDOW	UTILITY MARK
EXISTING BUILDING	NEW BUILDING
CONCRETE	MASONRY
ASPHALT	GRAVEL
SAND/GRAVEL	EARTH
WATER	TREE
FENCE	UTILITY POLE