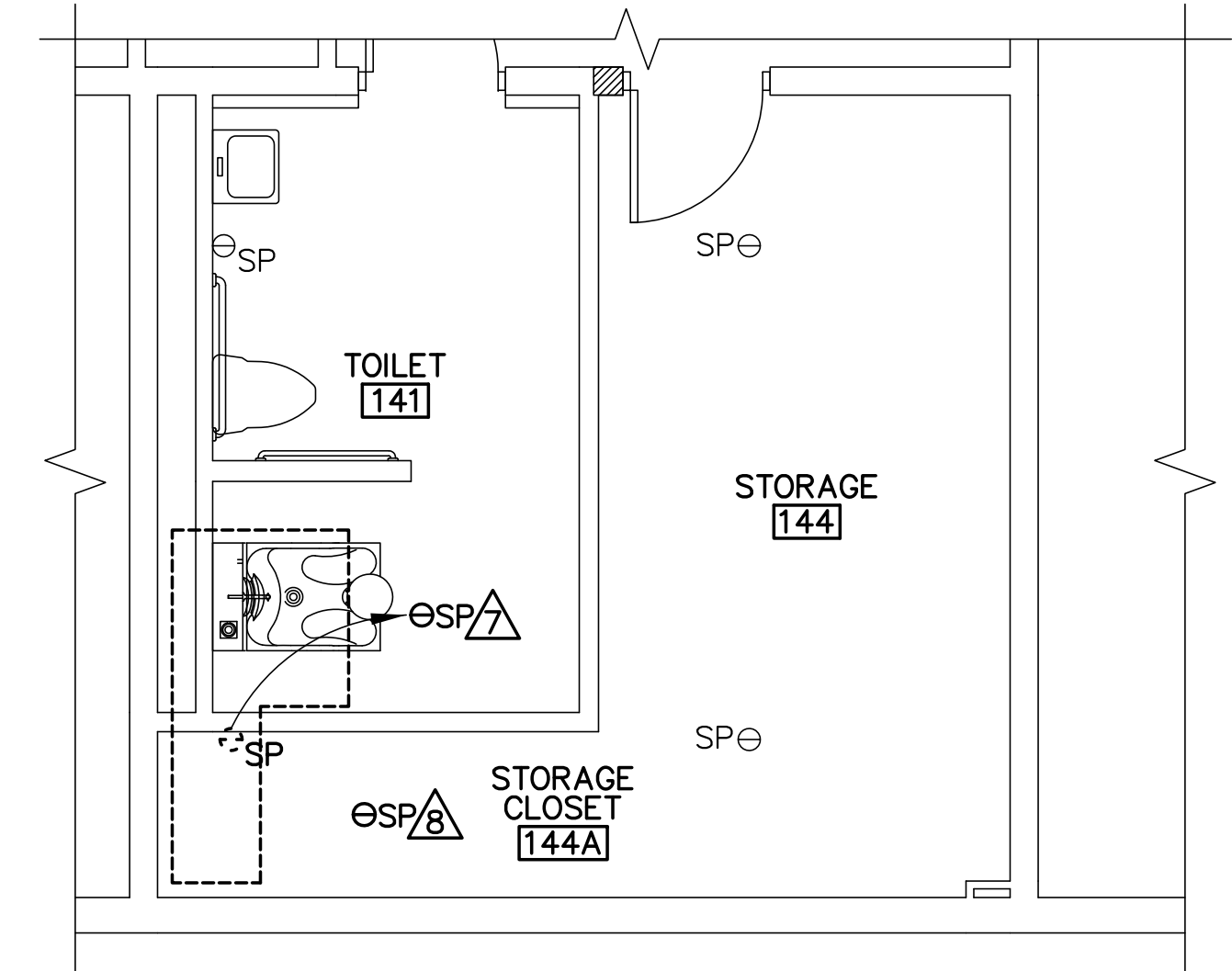
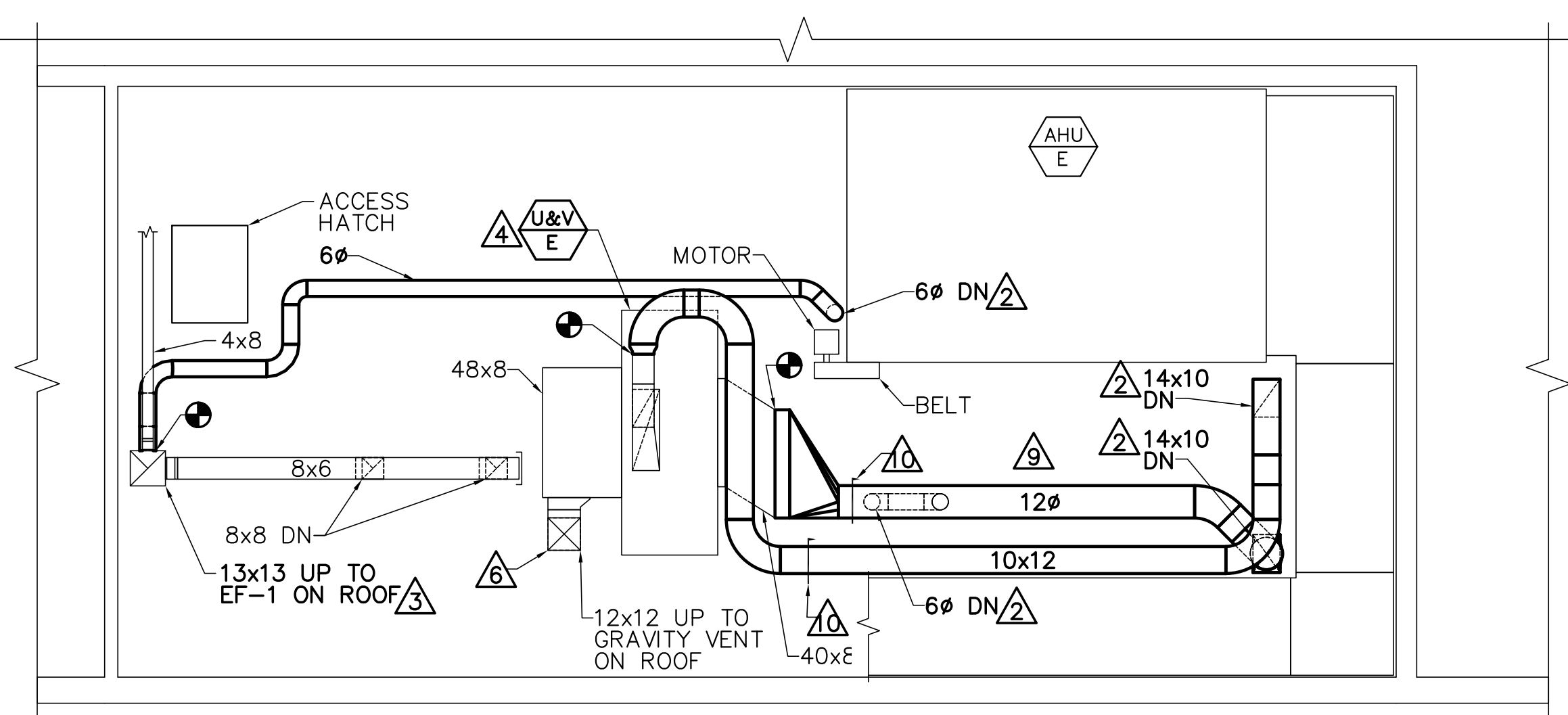


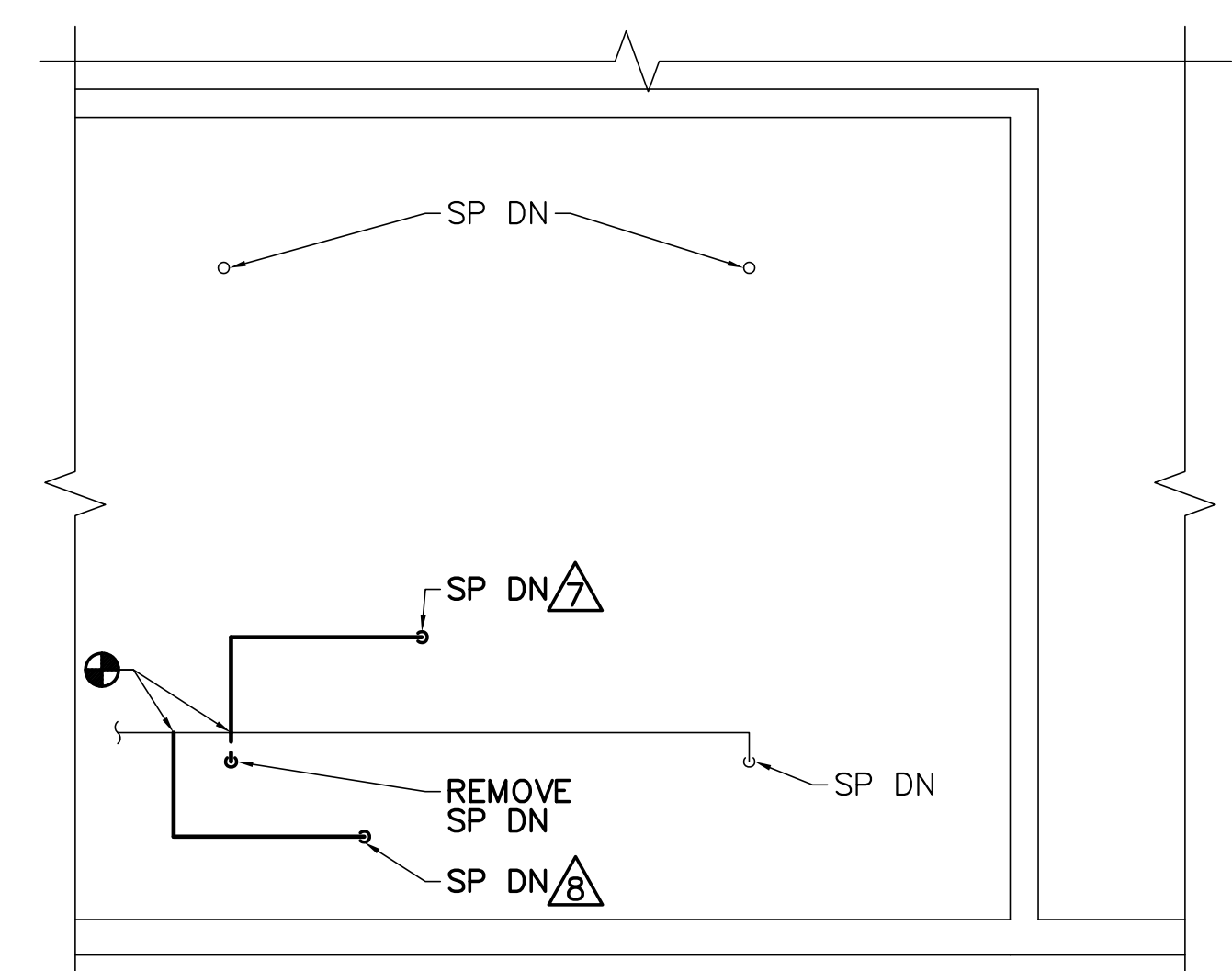
1 MECHANICAL PART PLAN
 M-101 SCALE: 1/4"=1'-0"
 PLAN NORTH



2 FIRST FLOOR SPRINKLER PART PLAN
 M-101 SCALE: 1/4"=1'-0"
 PLAN NORTH



3 MECHANICAL ROOM PART PLAN
 M-101 SCALE: 1/4"=1'-0"
 PLAN NORTH



4 MECHANICAL ROOM SPRINKLER PART PLAN
 M-101 SCALE: 1/4"=1'-0"
 PLAN NORTH

DRAWING KEYNOTES

- 1 BALANCE EXISTING EXHAUST GRILLE TO SPECIFIED CFM.
- 2 COORDINATE DROP LOCATION BETWEEN FLOOR JOISTS, 16" OC.
- 3 INSTALL EF-1 ON ROOF ABOVE TO REPLACE EXISTING EF. CONNECT TO EXISTING CONTROLS.
- 4 REBALANCE EXISTING U&V-2.
- 5 REINSTALL EXISTING THERMOSTAT. EXTEND WIRING AS REQUIRED.
- 6 REBALANCE EXISTING OUTSIDE AIR CONNECTION TO 100 CFM.
- 7 RELOCATE SPRINKLER HEAD AS SHOWN.
- 8 PROVIDE SPRINKLER HEAD, MATCH EXISTING.
- 9 INSTALL DUCT OFF FLOOR TO AVOID SERVICE CLEARANCE OF AHU.
- 10 PROVIDE VOLUME DAMPER TO INCREASE STATIC PRESSURE OF SYSTEM TO BRING TOTAL CFM DOWN.

OAK POINT ASSOCIATES
 85 Middle Street, Portsmouth, NH 03801 (T) 603.431.4649 (F) 603.431.1070
 www.oakpoint.com

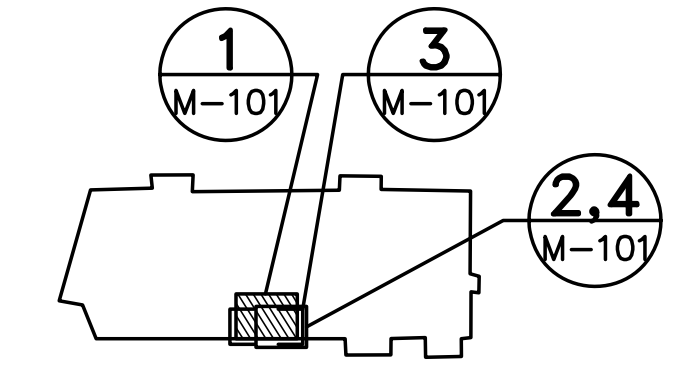


DESIGNED BY: AJK
 DRAWN BY: RDA
 CHECKED BY: MSA
 PROJECT: 21702.09

UNIVERSITY OF SOUTHERN MAINE
 PORTLAND, MAINE
 Woodbury Campus Center
 35 Bedford Street
 Portland, ME 04101
 T (207) 780-4160

WOODBURY CAMPUS CENTER
 BATHROOM ADDITION
 Portland, Maine

MECHANICAL AND SPRINKLER PART PLANS



KEYPLAN
 NOT TO SCALE
 PLAN NORTH

