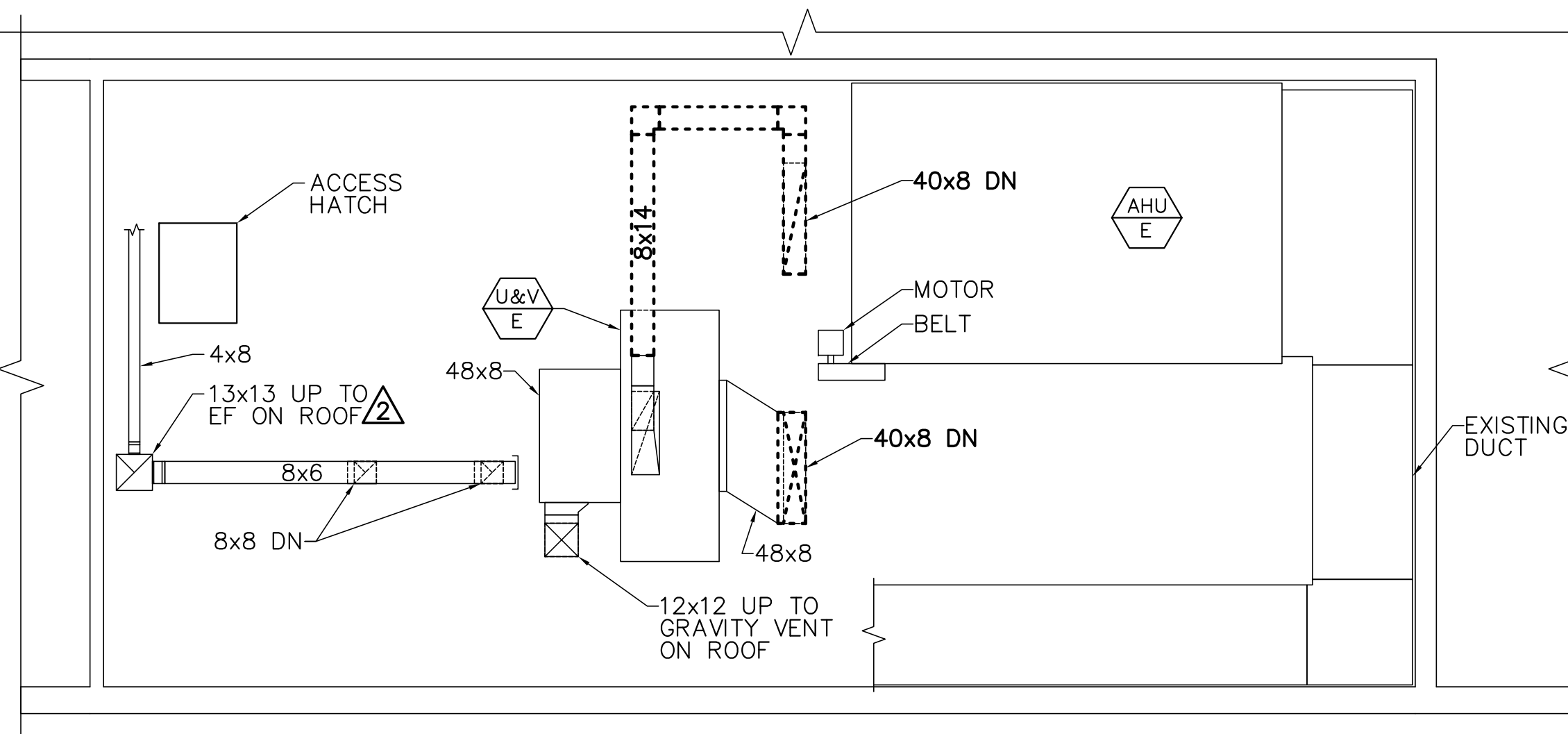


1 MECHANICAL REMOVALS PART PLAN
 MD101 SCALE: 1/4"=1'-0"  PLAN NORTH



2 MECHANICAL ROOM REMOVALS PART PLAN
 MD101 SCALE: 1/4"=1'-0"  PLAN NORTH

- DRAWING KEYNOTES**
- 1 REMOVE GRILLE AND ASSOCIATED DUCT. PATCH HOLE IN CEILING AND IN FLOOR ABOVE.
 - 2 REMOVE EXHAUST FAN ON ROOF. TEMPORARILY CAP AND SEAL FOR INSTALLATION. REFER TO 2/M-101.
 - 3 TEMPORARILY REMOVE THERMOSTAT, SALVAGE FOR REINSTALLATION.



DESIGNED BY: AJK
 DRAWN BY: KLG
 CHECKED BY: MSA
 PROJECT: 21702.09

**UNIVERSITY OF SOUTHERN MAINE
 PORTLAND, MAINE**
 Woodbury Campus Center
 35 Bedford Street
 Portland, ME 04101
 T (207) 780-4160

**WOODBURY CAMPUS CENTER
 BATHROOM ADDITION**
 Portland, Maine

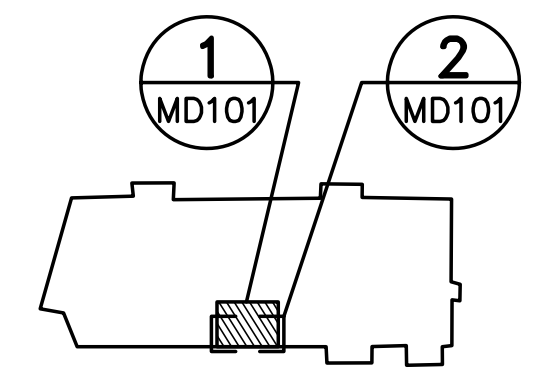
**MECHANICAL
 REMOVALS
 PART
 PLANS**


SCALE: AS NOTED

DATE: 06-30-17

DWG.: **MD101**

SHEET: **7** OF **12**



KEYPLAN  PLAN NORTH
 NOT TO SCALE

