

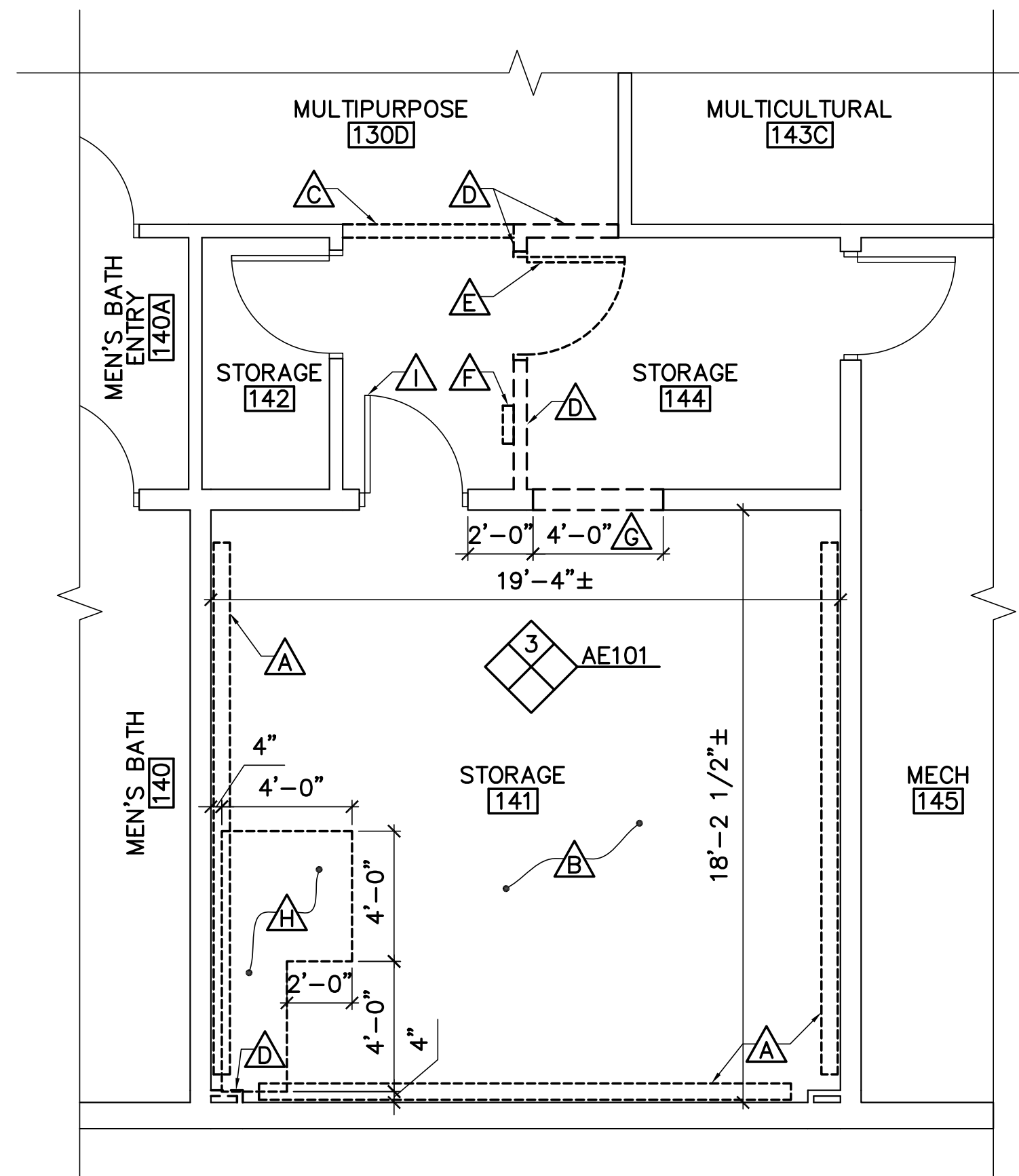
DESIGNED BY: JMC  
 DRAWN BY: CAM  
 CHECKED BY: JMC  
 PROJECT: 21702.09

UNIVERSITY OF SOUTHERN MAINE  
 PORTLAND, MAINE  
 Woodbury Campus Center  
 35 Bedford Street  
 Portland, ME 04101  
 T (207) 750-4160

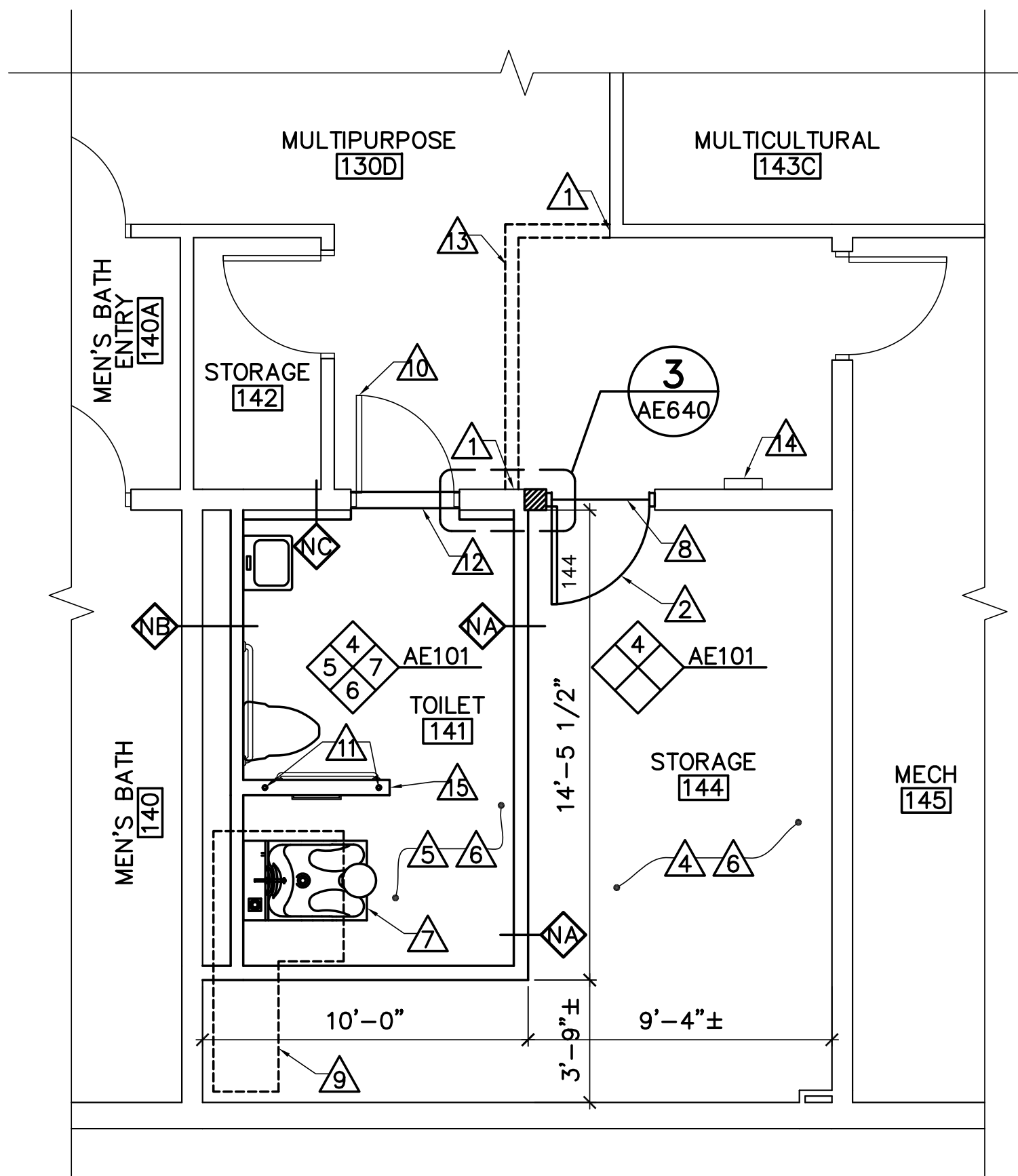
WOODBURY CAMPUS CENTER  
 BATHROOM ADDITION  
 Portland, Maine

FLOOR PART PLANS AND INTERIOR ELEVATIONS

SCALE: AS NOTED  
 DATE: 06-30-17  
 DWG.: AE101  
 SHEET: 4 OF 12



**1 REMOVALS FLOOR PART PLAN**  
 AE101 SCALE: 1/4"=1'-0"



**2 FLOOR PART PLAN**  
 AE101 SCALE: 1/4"=1'-0"

**GENERAL SHEET NOTES**

- COORDINATE WORK WITH MECHANICAL, PLUMBING, AND ELECTRICAL SHEETS.
- FINISH COLORS TO BE SELECTED BY OWNER.

**REMOVALS KEYNOTES (THIS SHEET ONLY)**

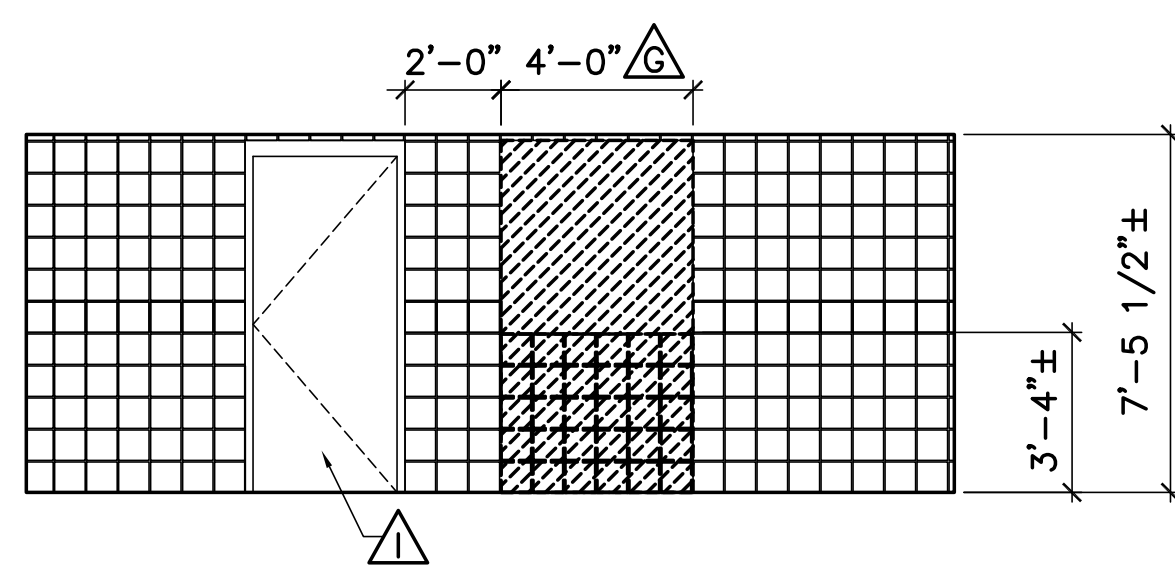
- △ REMOVE LIGHT COVE.
- △ REMOVE CARPET FLOORING. PREPARE CONCRETE SLAB FOR SCHEDULED FLOORING.
- △ REMOVE DECORATIVE WOOD SOFFIT.
- △ REMOVE METAL STUD AND GYPSUM BOARD WALL AS REQUIRED.
- △ REMOVE WOOD DOOR AND HOLLOW METAL FRAME.
- △ REMOVE AND STORE WALL MOUNTED FIRE EXTINGUISHER CABINET AND WOOD DROP BOX FOR REINSTALLATION.
- △ REMOVE GYPSUM BOARD/METAL STUD INFILL AND SECTION OF CMU WALL.
- △ SAW CUT AND REMOVE SECTION OF CONCRETE SLAB AS REQUIRED FOR PLUMBING LINES. REFER TO PLUMBING SHEETS.
- △ REMOVE LOCKSET.

**KEYNOTES (THIS SHEET ONLY)**

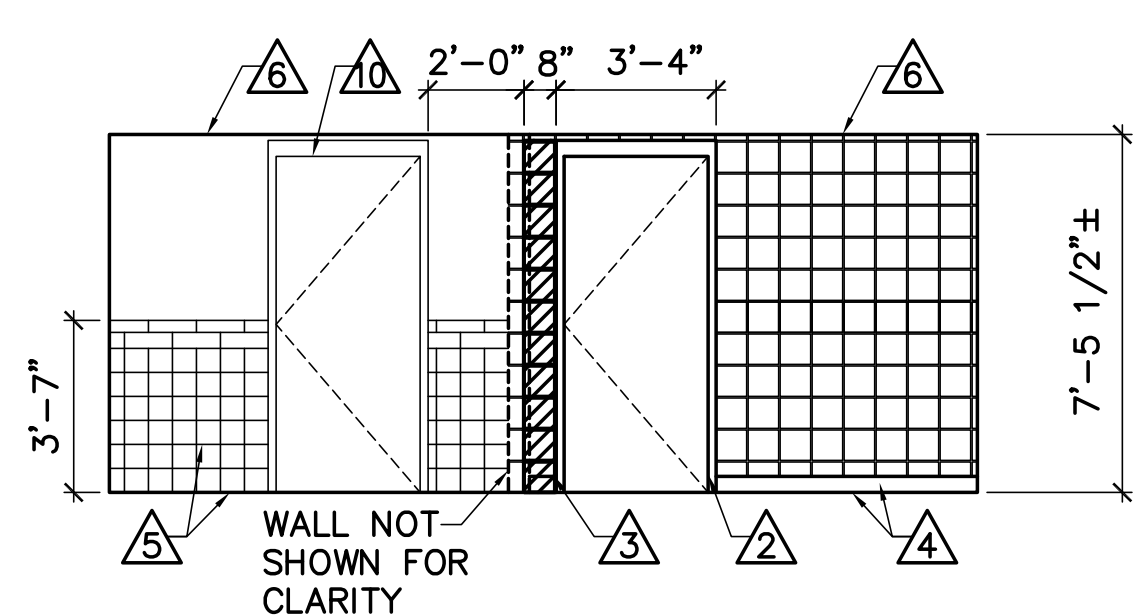
- ① PATCH AND PAINT AS REQUIRED.
- ② HOLLOW METAL FRAME, WOOD DOOR, AND DOOR HARDWARE. SEE DOOR SCHEDULE ON SHEET AE640.
- ③ METAL STUD AND GYPSUM BOARD INFILL.
- ④ VCT FLOORING AND RUBBER WALL BASE.
- ⑤ CERAMIC TILE FLOORING AND WAINSCOT. SEE INTERIOR ELEVATIONS FOR HEIGHT AND PATTERN OF CERAMIC WAINSCOT.
- ⑥ PATCH CEILING AS REQUIRED AND SKIM COAT TO PROVIDE SMOOTH FINISH, PAINT.
- △ FOOT BATH. REFER TO PLUMBING SHEETS.
- ⑧ RESILIENT TRANSITION STRIP.
- ⑨ INFILL CONCRETE SLAB AND PREPARE FOR SCHEDULED FLOORING.
- ⑩ PROVIDE DOOR HARDWARE AS SCHEDULED.
- ⑪ 1-1/2" DIA SCHEDULE 40 PIPE SET IN EXISTING CONCRETE SLAB.
- ⑫ STONE THRESHOLD.
- ⑬ PATCH EXISTING QUARRY TILE FLOOR TO MATCH EXISTING ADJACENT.
- ⑭ REINSTALL WALL MOUNTED FIRE EXTINGUISHER AND WOOD DROP BOX.
- ⑮ KNEE WALL. SEE DETAIL 4/AE640.

**RESTROOM ACCESSORY SCHEDULE**

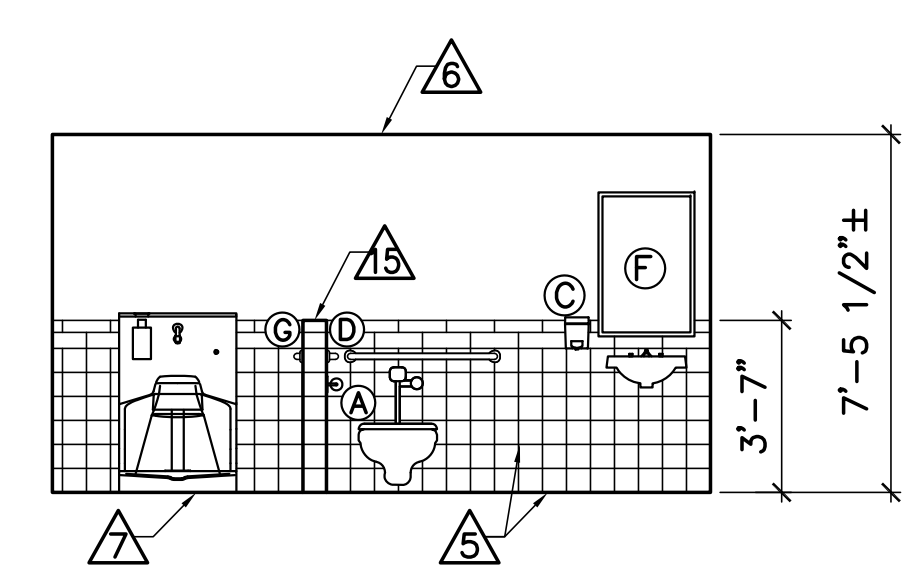
LTR	ITEM	COMMENTS
Ⓐ	TOILET TISSUE DISPENSER	FURNISHED BY OWNER, INSTALLED BY CONTRACTOR
Ⓑ	PAPER TOWEL DISPENSER	FURNISHED BY OWNER, INSTALLED BY CONTRACTOR
Ⓒ	SOAP DISPENSER	FURNISHED BY OWNER, INSTALLED BY CONTRACTOR
Ⓓ	1-1/4" Ø GRAB RAIL	PROVIDE (2)
Ⓔ	COAT HOOK	
Ⓕ	24" x 36" MIRROR	
Ⓖ	TOWEL BAR (18")	



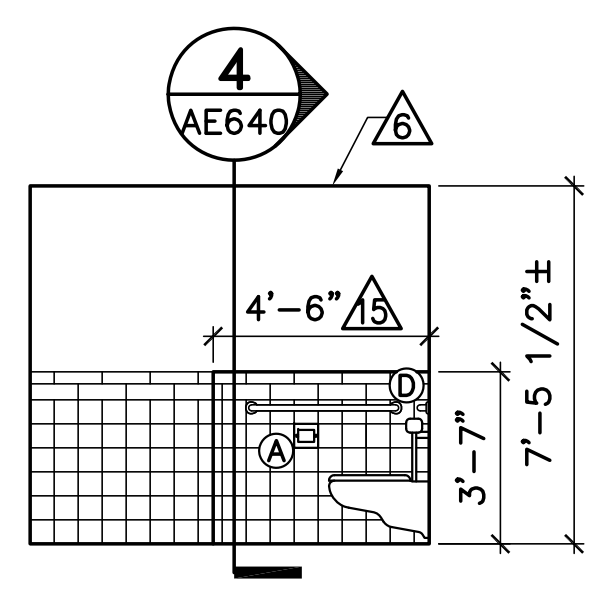
**3 WALL REMOVALS ELEVATION**  
 AE101 SCALE: 1/4"=1'-0"



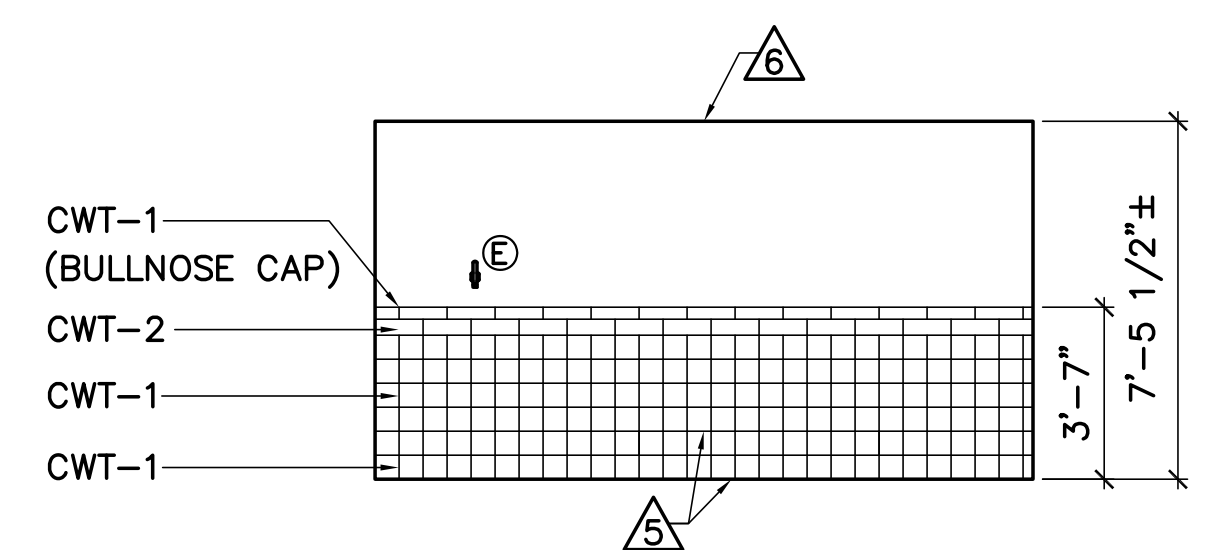
**4 WALL INFILL ELEVATION**  
 AE101 SCALE: 1/4"=1'-0"



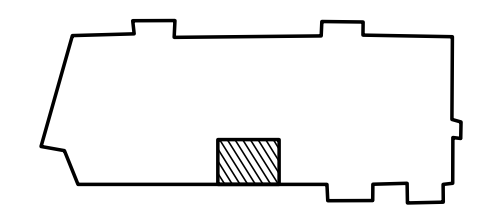
**5 TOILET ROOM 141**  
 AE101 SCALE: 1/4"=1'-0"



**6 TOILET ROOM 141**  
 AE101 SCALE: 1/4"=1'-0"



**7 TOILET ROOM 141**  
 AE101 SCALE: 1/4"=1'-0"



KEYPLAN  
 NOT TO SCALE  
 PLAN NORTH

