

DESIGNED BY: JMC
 DRAWN BY: CAM
 CHECKED BY: JMC
 PROJECT: 21702.09

UNIVERSITY OF SOUTHERN MAINE
PORTLAND, MAINE
 Woodbury Campus Center
 35 Bedford Street
 Portland, ME 04101
 T (207) 750-4160

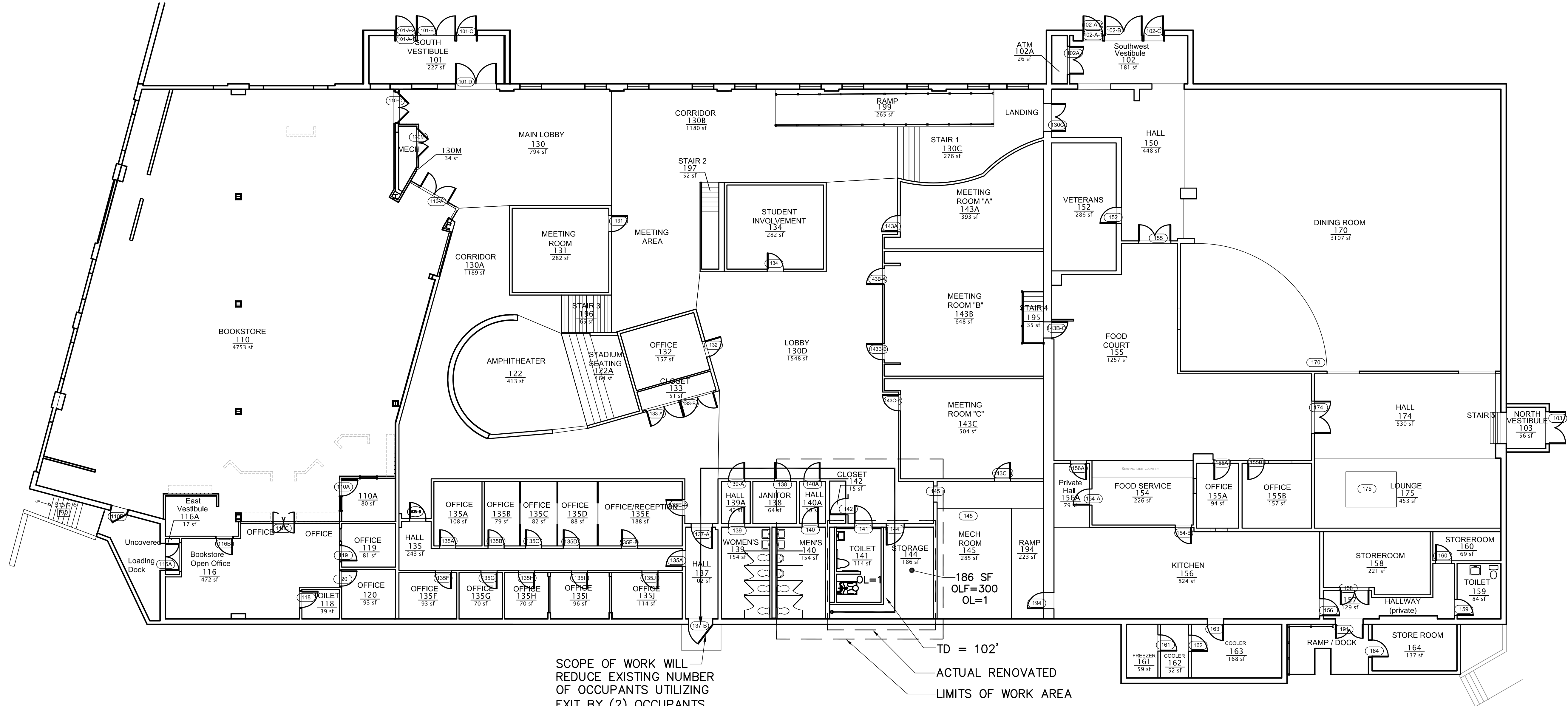
WOODBURY CAMPUS CENTER
BATHROOM ADDITION
 Portland, Maine

LIFE SAFETY INFORMATION

SCALE: AS NOTED
 DATE: 06-30-17

DWG.: **G-101**

SHEET: **1.1** OF **12**



SCOPE OF WORK WILL REDUCE EXISTING NUMBER OF OCCUPANTS UTILIZING EXIT BY (2) OCCUPANTS.
 TD = 102'
 ACTUAL RENOVATED
 LIMITS OF WORK AREA

LEGEND

- TRAVEL PATH
- OL OCCUPANT LOAD
- OLF OCCUPANT LOAD FACTOR
- SF SQUARE FEET
- TD TRAVEL DISTANCE

NOTE: TRAVEL DISTANCE LIMIT: 250' ALLOWABLE / 102' ACTUAL
 PREVIOUS OCCUPANT LOAD OF RENOVATION AREA: 4 OCCUPANTS
 CURRENT OCCUPANT LOAD OF RENOVATION AREA: 2 OCCUPANTS