

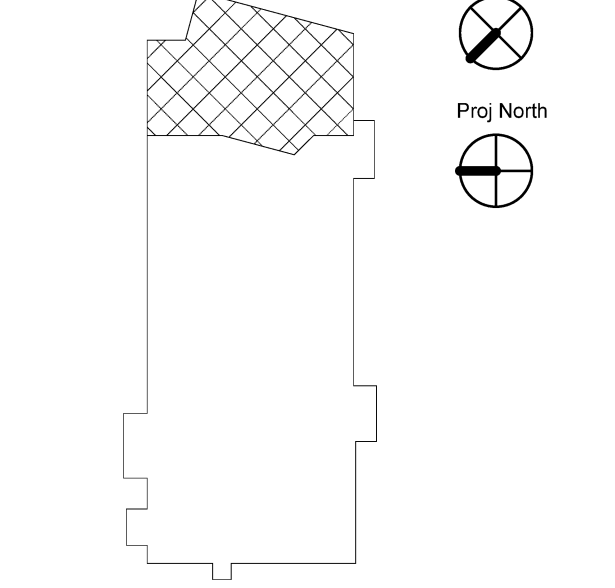
HARRIMAN

AUBURN PORTLAND MANCHESTER

UNIVERSITY OF SOUTHERN MAINE WOODBURY CAMPUS CENTER EXTERIOR UPGRADES 2014-011 PHASE II - PV ARRAY PORTLAND, ME

Harriman Project No. 14352

Key Plan



NOTES

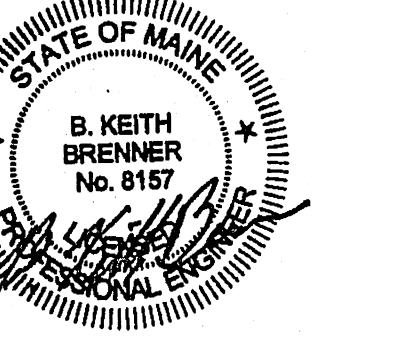
- 1. ALL STEEL BEAMS TO CONFORM WITH ASTM A992 (Fy=50 KSI)
2. ALL HSS COLUMNS TO CONFORM WITH ASTM A500 GR. B (Fy=46 KSI)
3. ALL STEEL ANGLES AND PLATES TO CONFORM WITH ASTM A36 (Fy=36 KSI)
4. ALL STEEL MEMBERS AND CONNECTION MATERIAL TO BE GALVANIZED.
5. GC TO VERIFY ALL EXISTING DIMENSIONS AND ELEVATIONS PRIOR TO STEEL FABRICATION
6. LENGTH AND WITH OF PV FRAMES SHALL BE COORDINATED WITH ACTUAL PANELS SELECTED
7. T/STL ELEVATION IS BASED ON MAINTAINING 2' CLEAR TO THE UNDERSIDE OF THE DEEPEST BEAM (W21). VERIFY MINIMUM CLEARANCE PRIOR TO STEEL FABRICATION.
8. DESIGN OF SUB-FRAMES TO SUPPORT THE ACTUAL PV PANELS AT THE DESIRED ANGLE IS THE RESPONSIBILITY OF THE PANEL MANFR.

DESIGN WIND LOAD:

BASIC WIND SPEED = 100 MPH (3 SEC GUST)
W = 1.15 (OCC. CAT. III)
EXPOSURE CATEGORY = C
INT. PRESSURE COEF. (GCP) = +/- 0.18

Issues and Revisions

Table with 3 columns: Mark, Date, Description. Row 1: 08-29-14, ISSUED FOR BID



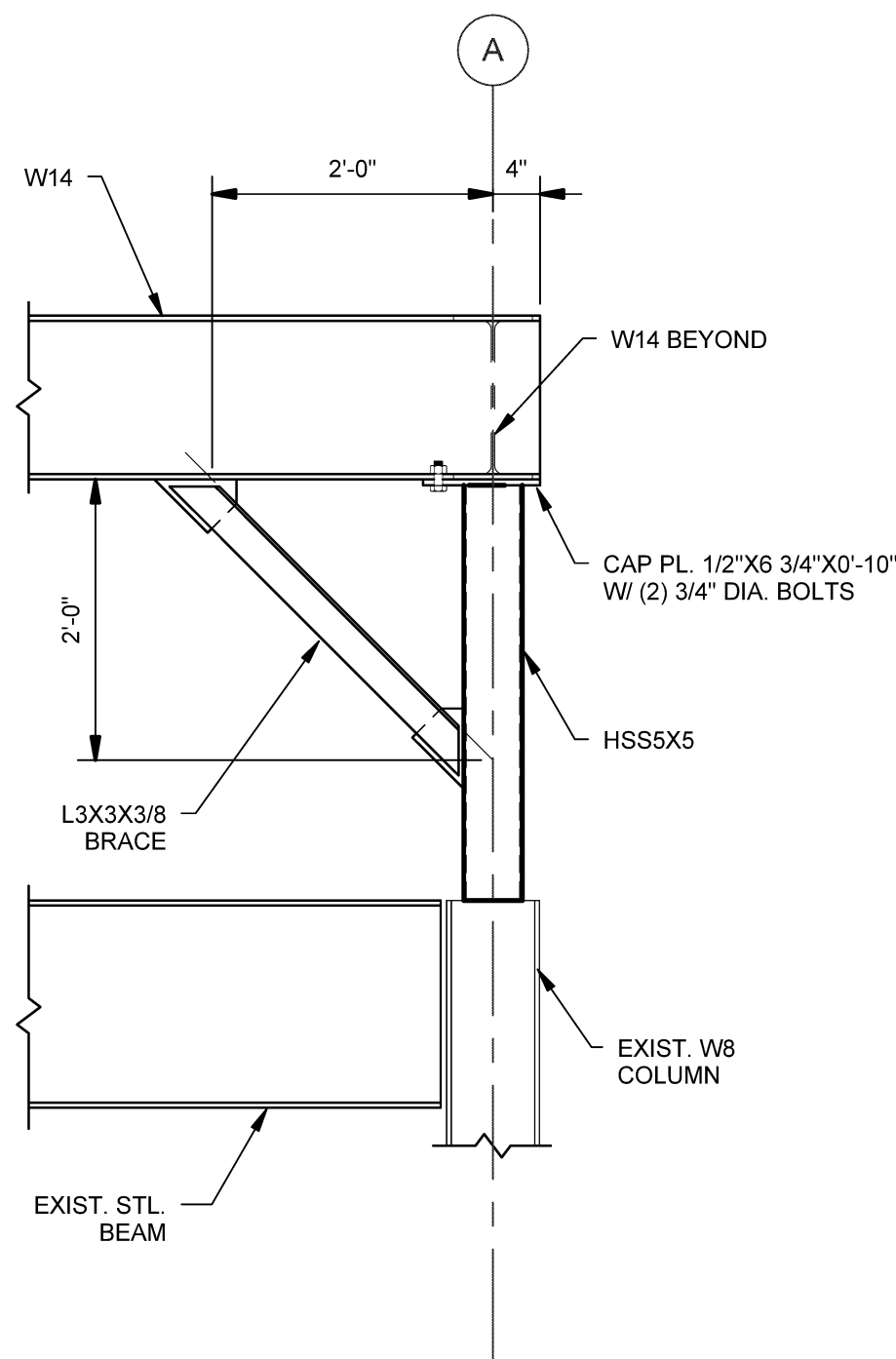
Drawing Scales

As indicated

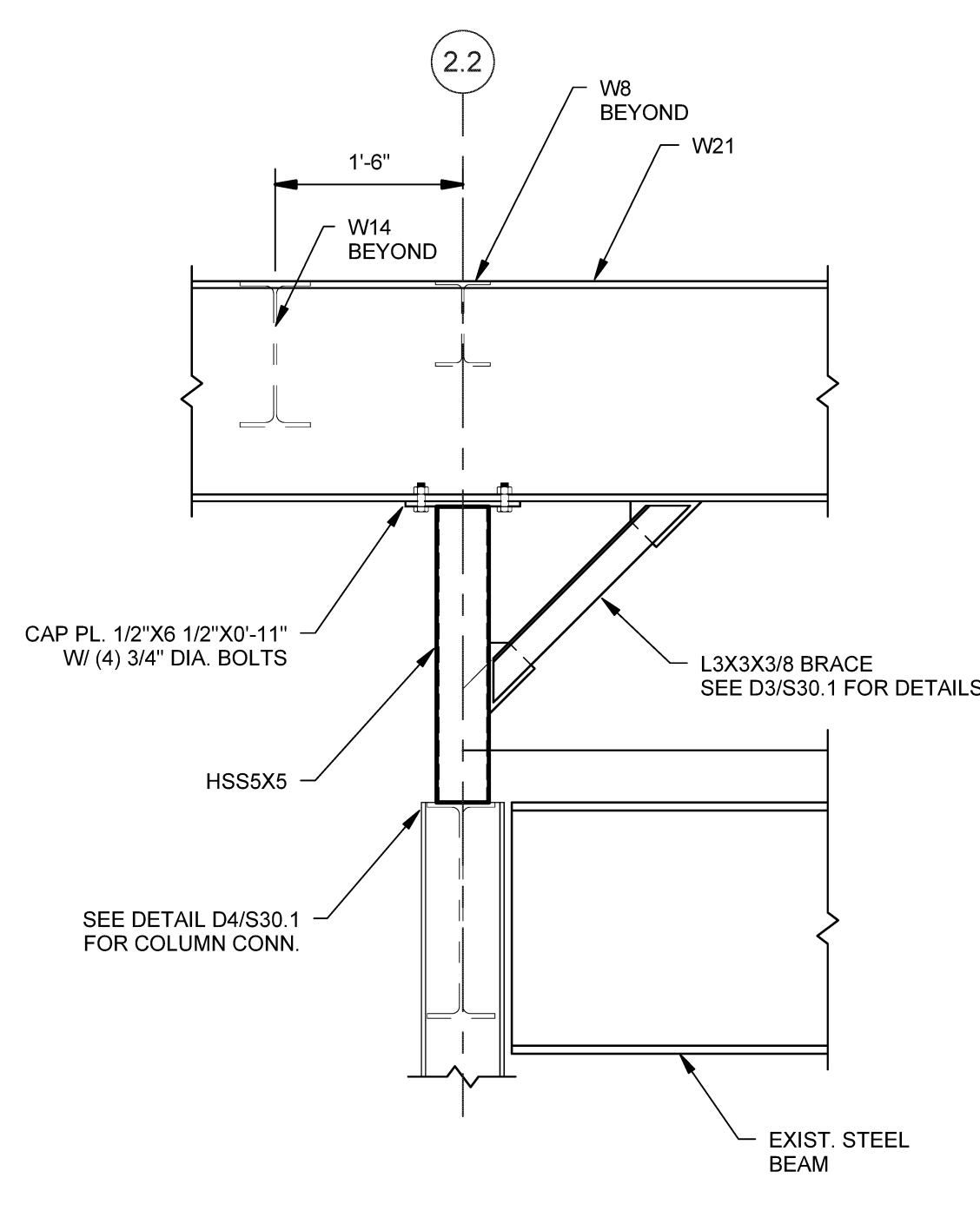
PA/PE: BKB © 2014 Harriman Associates
Drawn By: ZPP

ROOF GRILLAGE FRAMING PLAN AND DETAILS

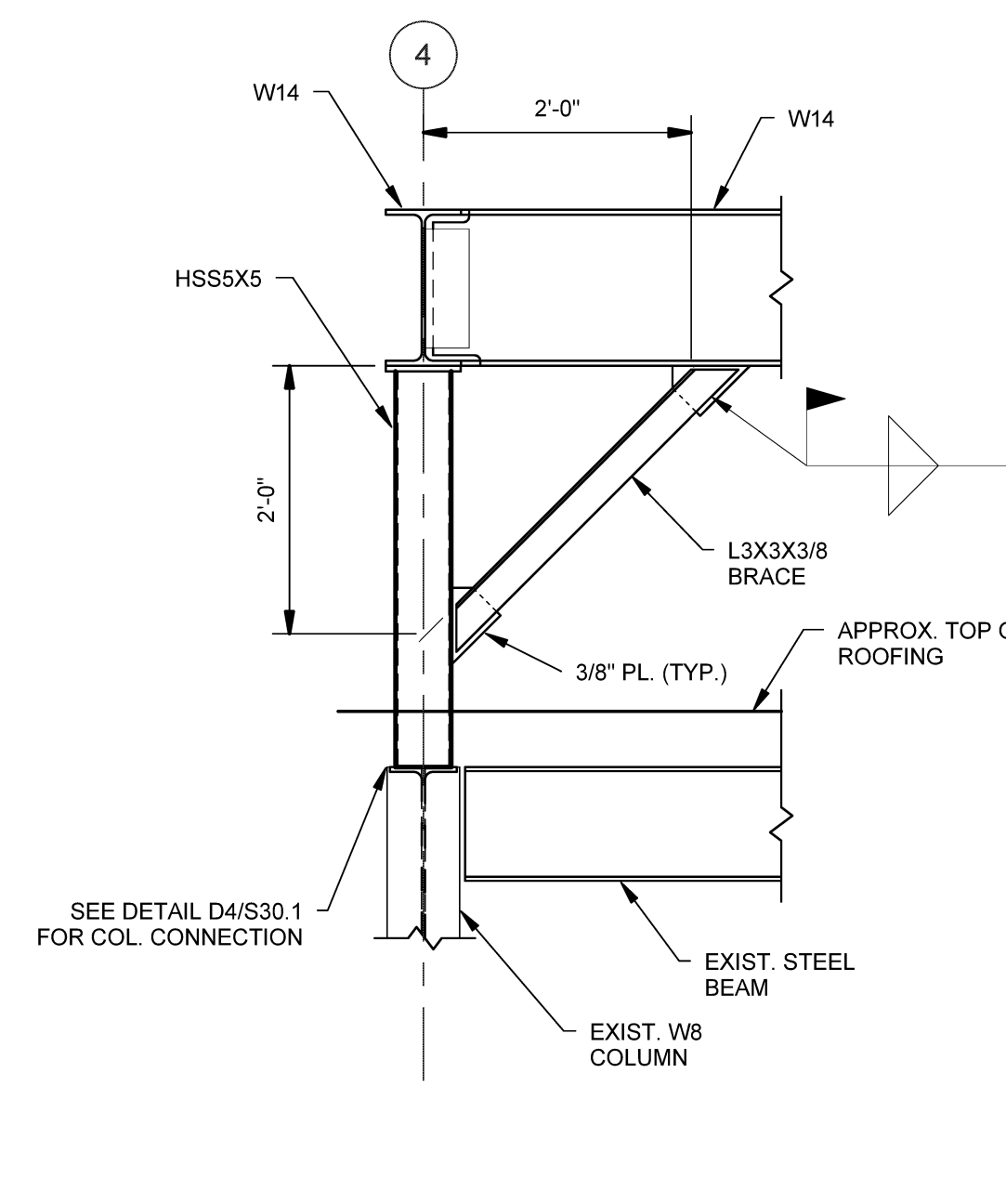
S30.1



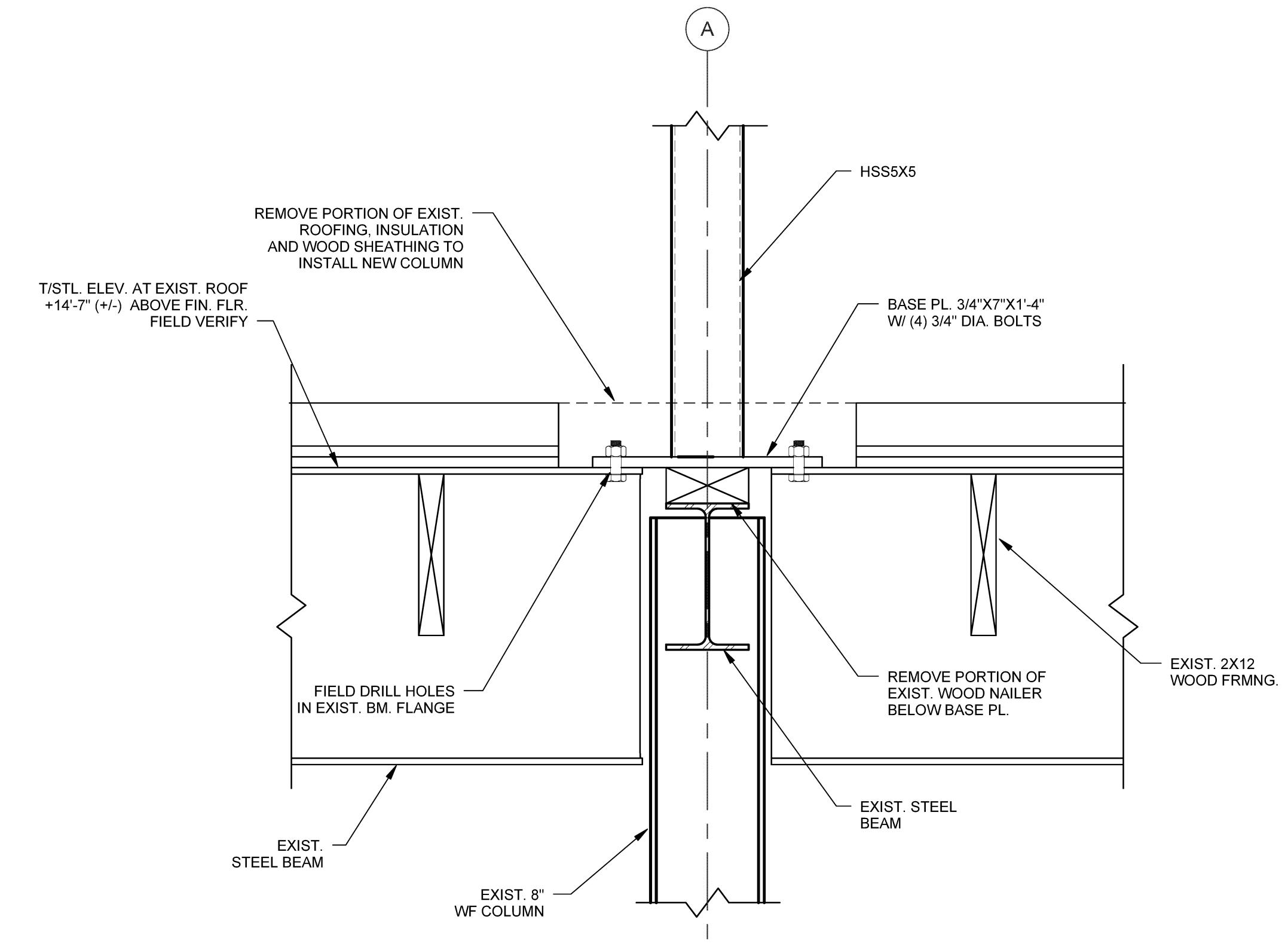
D1 SECTION SCALE: 3/4" = 1'-0"



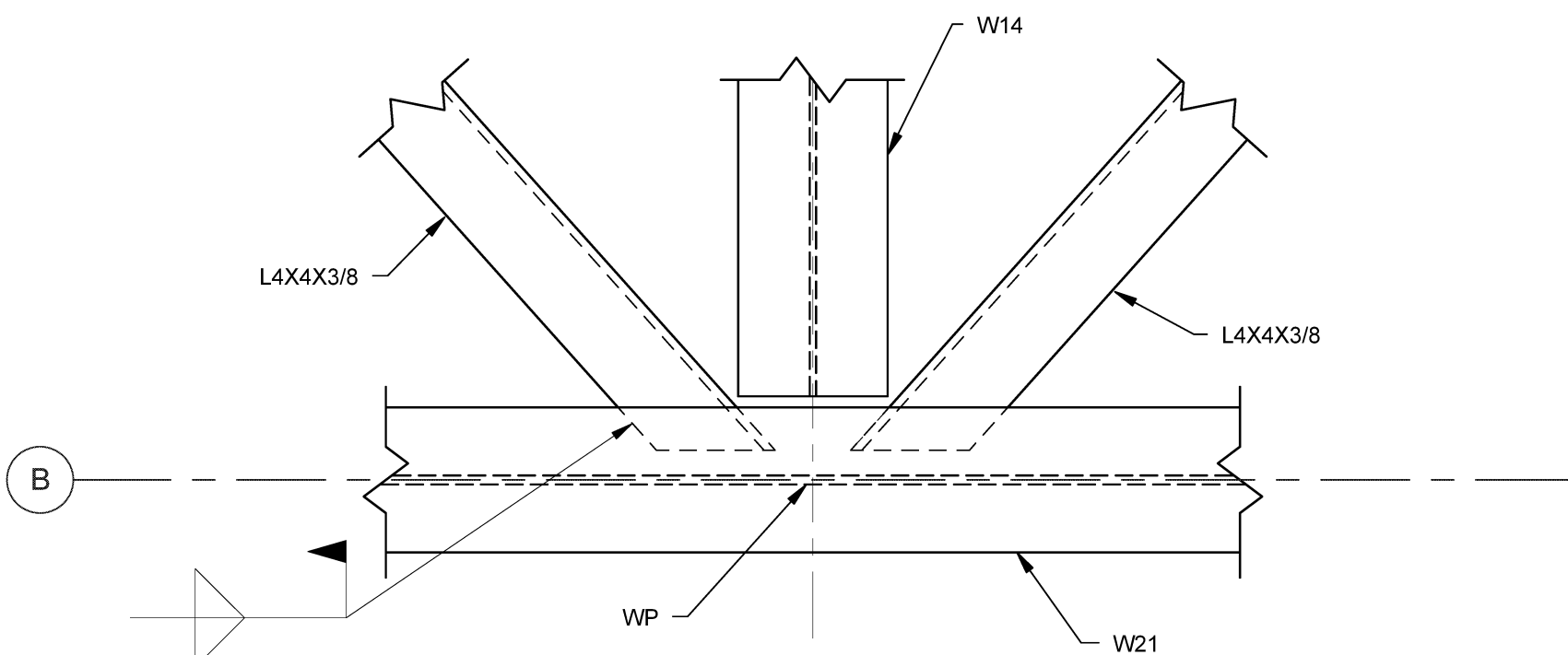
D2 SECTION AT W21 CANTILEVER SCALE: 3/4" = 1'-0"



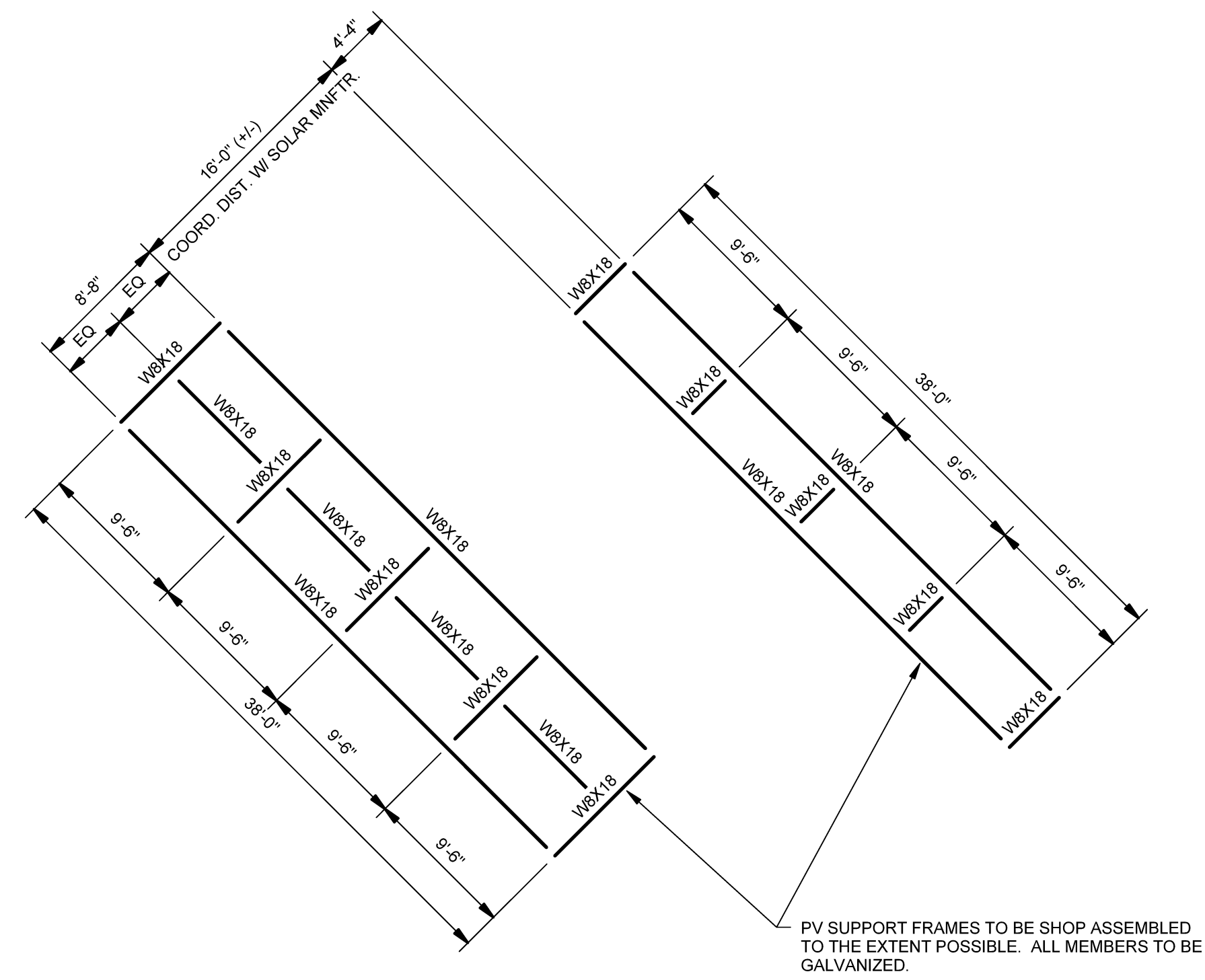
D3 TYPICAL KNEE-BRACE DETAIL SCALE: 3/4" = 1'-0"



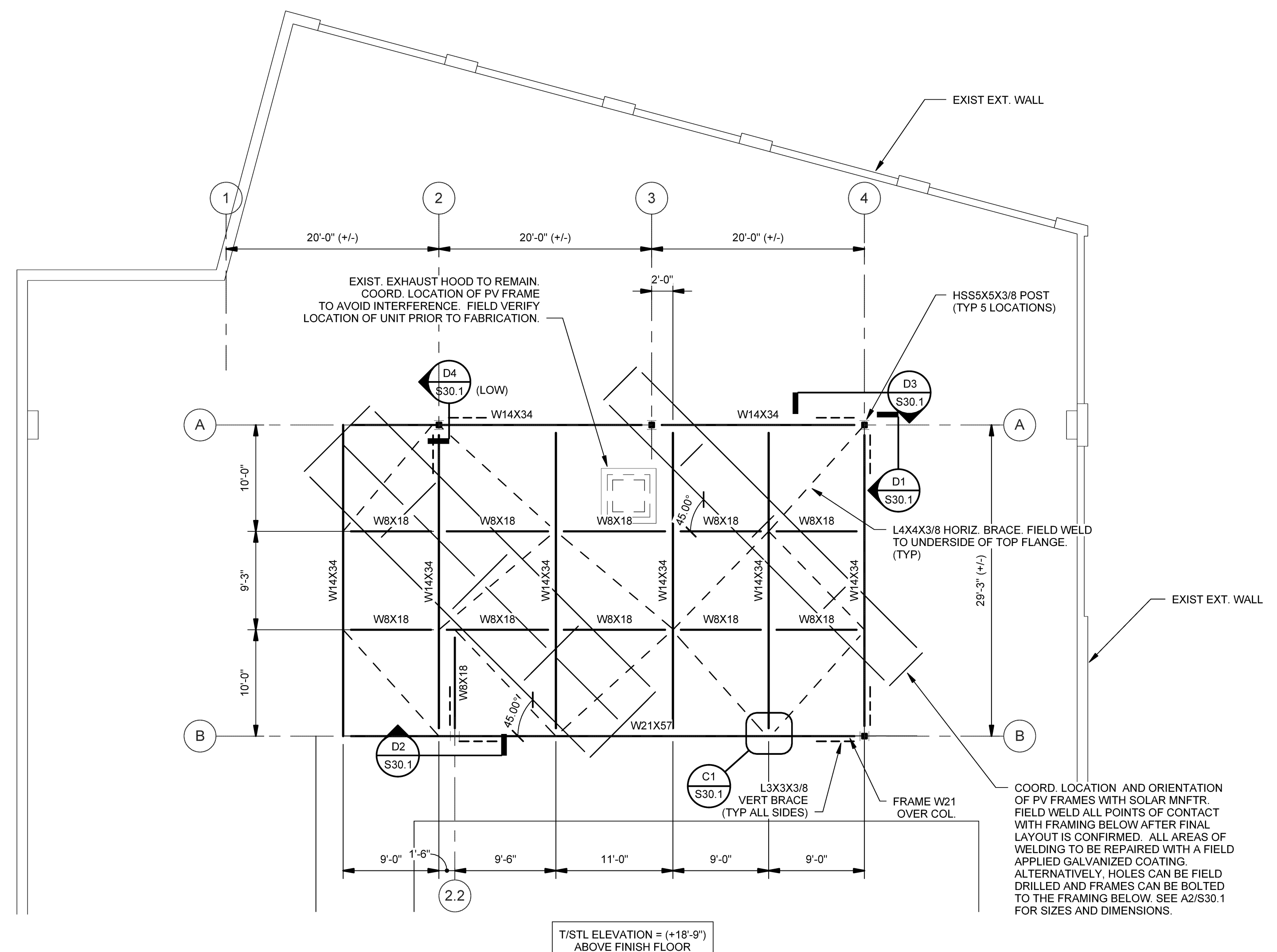
D4 DETAIL AT COLUMN CONNECTION SCALE: 1 1/2" = 1'-0"



C1 PLAN AT HORIZONTAL BRACING SCALE: 1 1/2" = 1'-0"



A2 PV SUPPORT FRAMING PLANS SCALE: 1/8" = 1'-0"



A4 GRILLAGE FRAMING PLAN SCALE: 1/8" = 1'-0"