



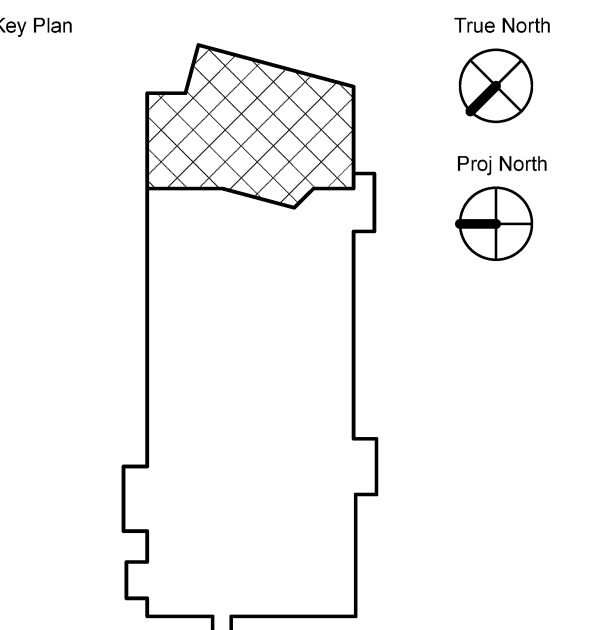
**HARRIMAN**

AUBURN PORTLAND MANCHESTER

**UNIVERSITY OF  
SOUTHERN MAINE  
CENTER  
BOOKSTORE  
RENOVATIONS**

PORTLAND, ME

Harriman Project No. 13859



**CODE PLAN LEGEND:**

- ⊗ EXIT SIGN
- ⊠ FIRE ALARM SYSTEM HORN / STROBE
- ⊡ FIRE ALARM SYSTEM STROBE
- ⊞ FIRE ALARM SYSTEM BELL
- ⊕ EMERGENCY LIGHT
- ⊙ SMOKE DETECTOR
- ⊠ FIRE ALARM PULL STATION
- ⊙ FIRE EXTINGUISHER

**BUILDING DESIGN CODES:**

AMERICANS WITH DISABILITIES ACT (ADA 2010)  
NFPA 101 LIFE SAFETY CODE (2009)  
INTERNATIONAL BUILDING CODE (2009)  
NFPA 70 NATIONAL ELECTRIC CODE  
NFPA 13

**OCCUPANCY CLASSIFICATION:**

EXISTING OCCUPANCIES - NO CHANGE  
NFPA: ASSEMBLY / MERCANTILE  
IBC: ASSEMBLY A3 / MERCANTILE

**CONSTRUCTION TYPE:**

NFPA: TYPE 5 (000)  
IBC: TYPE VB

**AREA:**

TOTAL AREA: 27,515 SF  
AREA OF RENOVATION: 5,000 SF

**FIRE SUPPRESSION:**

SUPERVISED AUTOMATIC SPRINKLER SYSTEM PER  
NFPA 13.3.5 AND 9.7

**OCCUPANT LOADS:**

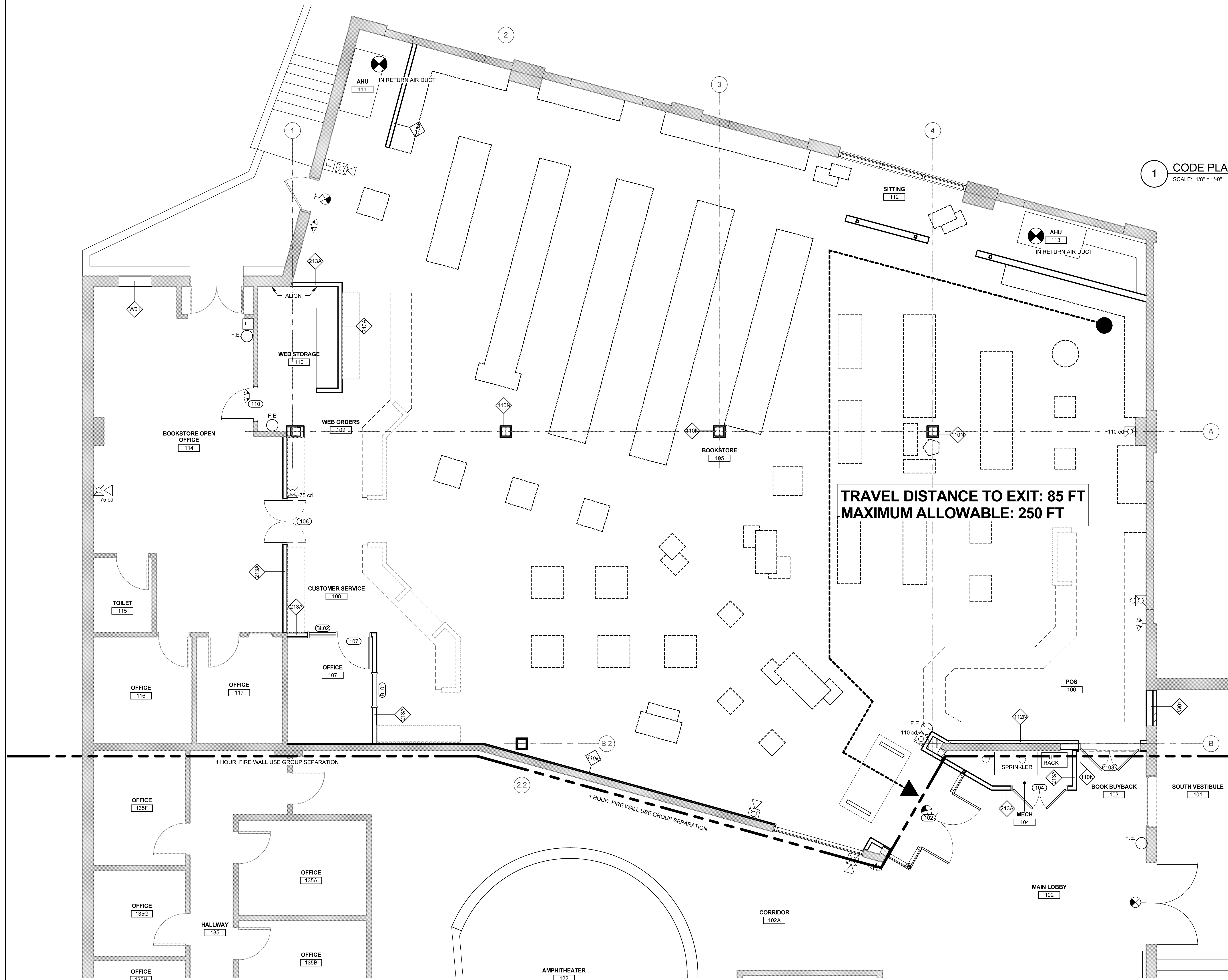
ASSEMBLY W/O SEATS: 7 SF NET  
ASSEMBLY W/ SEATS: 15 SF NET  
MERCANTILE: 30 SF GROSS  
OFFICE: 100 SF GROSS  
MECHANICAL: 300 SF GROSS  
STORAGE: 300 SF GROSS

**MEANS OF EGRESS:**

MAX TRAVEL DISTANCE: 250 FT (NFPA)  
DEAD END CORRIDOR: 50 FT  
COMMON PATH OF TRAVEL: 75 FT OL<50  
20 FT OL>50  
44 IN OL<50  
MIN CORRIDOR WIDTH: 44 IN OL<50  
EXIT CAPACITY: 3"/OCCUPANT (VERTICAL)  
2"/OCCUPANT (HORIZ)

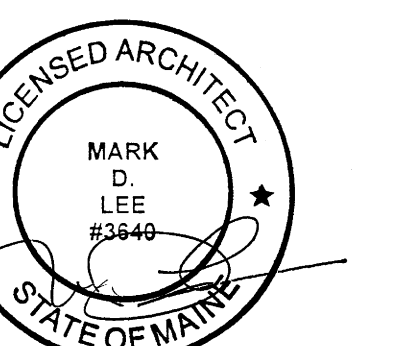
**1 CODE PLAN LEGEND AND SUMMARY**

SCALE: 1/8" = 1'-0"



**Issues and Revisions**

Mark	Date	Description
-	01-17-14	PERMIT SUBMISSION



Drawing Scales: 0 2 4 6'  
As indicated 1/4" = 1'-0"

PA/PE: MDL © 2014 Harriman Associates  
Drawn By: MDL

**LIFE SAFETY PLAN**

**LS-10.1**