



HARRIMAN

AUBURN PORTLAND MANCHESTER

UNIVERSITY OF SOUTHERN MAINE WOODBURY CAMPUS CENTER BOOKSTORE RENOVATIONS PORTLAND, ME

Harriman Project No. 13659

Key Plan

North

Proj North



Harriman Project No. 13659

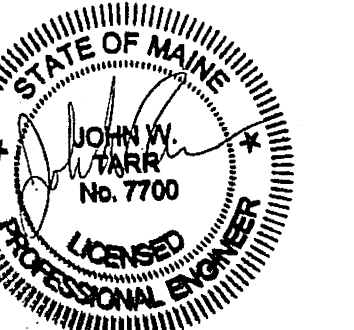
Key Plan

North

Proj North



Issues and Revisions		
Mark	Date	Description
-	12-04-13	DD REVIEW
-	12-18-13	FINAL REVIEW
-	01-03-14	OWNER REVIEW
-	01-10-14	ISSUED FOR BID



Drawing Scales

PA / PE: JWB © 2014 Harriman Associates
Drawn By: JMB

ELECTRICAL FLOOR PLANS

E10.1



4 FLOOR PLAN - EXISTING CONDITIONS

SCALE: 1/8" = 1'-0" 0 4' 8' 12'

- DRAWING NOTES:
- THE INTENT OF THE EXISTING CONDITIONS PLAN IS TO DOCUMENT EXISTING CONDITIONS. HOWEVER, ALL ELECTRICAL DEVICES MAY NOT NECESSARILY BE INDICATED ON THE DRAWINGS. FIELD VERIFY AND ADJUST WORK TO SUIT WORK FOUND.
 - ALL ITEMS INTENDED FOR REMOVAL SHALL BE REMOVED WITH ALL ASSOCIATED HARDWARE INCLUDING, BUT NOT LIMITED TO, CONDUIT, BOXES, WIRING, CABLES, HANGERS, ETC.
 - CONDUIT IN GOOD CONDITION AND PROPERLY LOCATED MAY BE REUSED WHERE APPLICABLE, UNLESS NOTED OTHERWISE.
 - VERIFY THAT ELECTRICAL POWER, LIGHTING AND SYSTEMS NOT RENOVATED BY THIS CONTRACT ARE NOT AFFECTED BY THE ALTERATIONS. PROVIDE ALL WORK REQUIRED TO MAINTAIN POWER, LIGHTING AND PROPER OPERATION OF SYSTEMS.
 - REFER TO EXISTING CONDITIONS PLAN TO DETERMINE EXTENT OF WORK IN EACH AREA, INCLUDING WHETHER DEVICES ARE TO REMAIN, BE REMOVED, REPLACED, ETC. EXCEPT AS NOTED, GENERALLY THE INTENT IS THAT IF EXISTING DEVICES ARE SHOWN ON THE EXISTING CONDITIONS PLAN AND NEW DEVICES ARE SHOWN ON THE LIGHTING AND POWER PLANS THEN EXISTING DEVICES ARE TO BE REMOVED. IF EXISTING DEVICES ARE SHOWN ON BOTH THEN THE DEVICES ARE TO REMAIN.
 - REFER TO ARCHITECTURAL REFLECTED CEILING PLANS TO LOCATE CEILING MOUNTED LIGHTING FIXTURES.

5 DRAWING NOTES

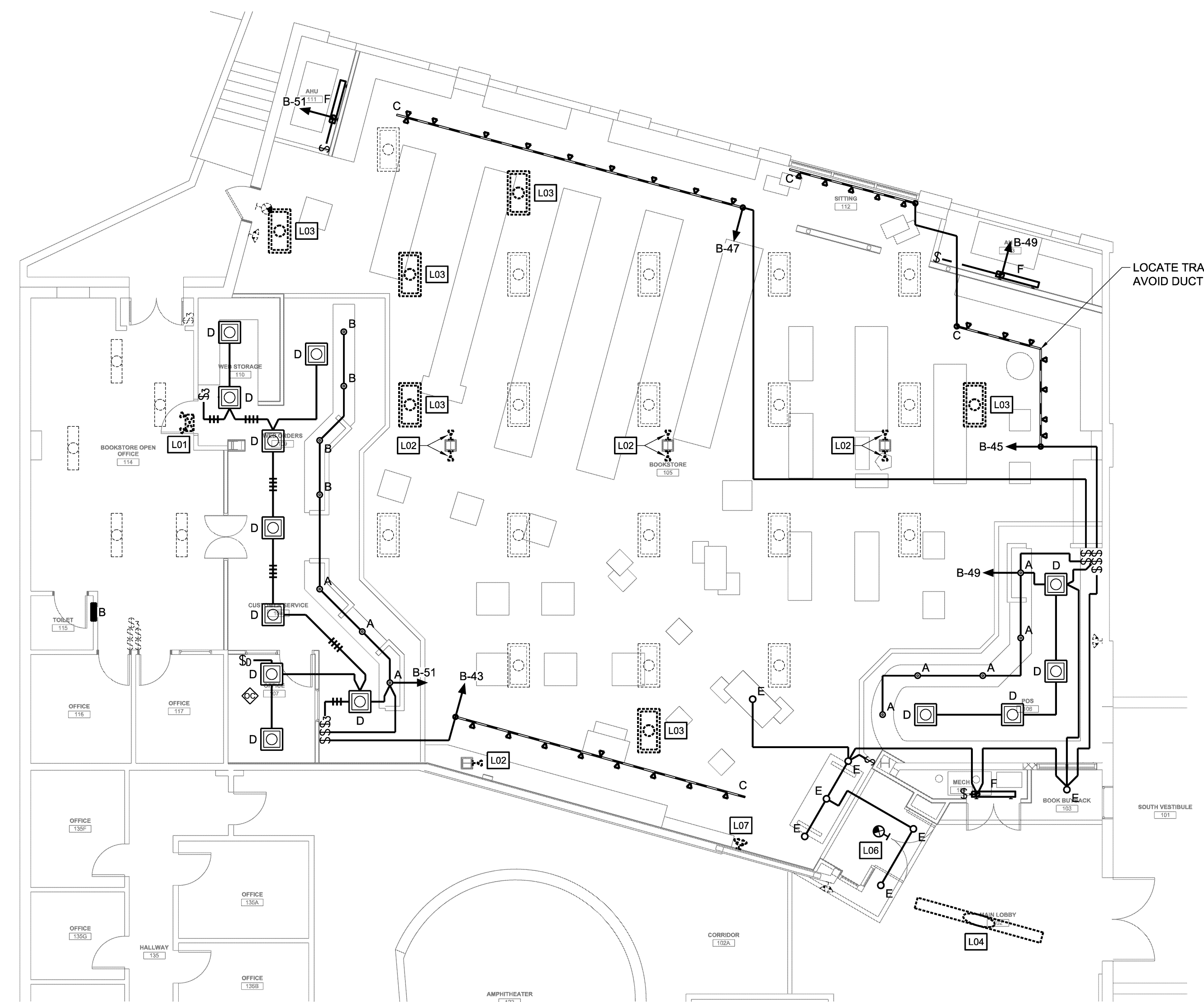
SCALE: NONE

KEY NOTES:

- D01... EXISTING RECESSED LIGHTING FIXTURE SHALL BE RELOCATED/REMOVED. PROVIDE NEW/EXTEND WIRING AS REQUIRED TO MAINTAIN SWITCHING/CIRCUIT TO LIGHTING FIXTURES TO REMAIN ON SAME SWITCH LEG/CIRCUIT.
- D02... EXISTING PANELBOARD "B" SHALL BE REPLACED WITH NEW PANELBOARD "B". INTENT IS TO TERMINATE EXISTING CIRCUITS FED FROM EXISTING PANELBOARD "B" TO NEW PANELBOARD "B".
- D03... EXISTING EMERGENCY LIGHTING REMOTE HEAD/ FIRE ALARM DEVICE TO REMAIN. PROTECT FROM CONSTRUCTION. RE-FEED UNIT AS REQUIRED TO ALLOW FOR ALTERATIONS AT MAIN ENTRY.
- L01... RELOCATE EXISTING EMERGENCY LIGHTING BATTERY UNIT UP WALL TO ABOVE NEW DOOR. EXTEND WIRING AS REQUIRED.
- L02... RELOCATED EXISTING EMERGENCY LIGHTING REMOTE HEAD FROM COLUMN TO FACE OF NEW COLUMN SURROUND. EXTEND WIRING AS REQUIRED.
- L03... EXISTING RELOCATED RECESSED LIGHTING FIXTURE. EXTEND WIRING AS REQUIRED. MAINTAIN SWITCHING/CIRCUITING.
- L04... EXISTING RELOCATED PENDANT LIGHTING FIXTURE. RELOCATE TO AVOID NEW WORK. EXTEND WIRING AS REQUIRED.
- L06... WIRE SELF-CONTAINED EXIT SIGN TO LOCAL LIGHTING CIRCUIT AHEAD OF ANY SWITCH.
- L07... RELOCATED EXISTING EMERGENCY LIGHTING REMOTE HEAD. EXTEND WIRING AS REQUIRED.
- P01... COORDINATE LOCATION OF RECEPTACLES AND PROVISIONS FOR DATA WITH FURNISHED COUNTER WITHIN OUTLINED AREA. COUNTER SERVED FROM UNDER SLAB. REFER TO ARCHITECTURAL DRAWINGS FOR SLAB CUT LOCATIONS.
- P02... LOCATE RECEPTACLE IN COUNTER TO SERVE SECURITY SYSTEM WANDS.
- P03... CUT NEW PANELBOARD "B" IN EXISTING GWPD WALL. TERMINATE EXISTING CIRCUITS TO REMAIN FROM EXISTING PANELBOARD "B" TO NEW PANELBOARD. REFER TO PANELBOARD SCHEDULES.
- P04... PROVISIONS FOR FLUSH MOUNTED WIRELESS ACCESS POINT. MOUNT FLUSH IN ACT CEILING.
- P05... PROVIDE TWO 3" SLEEVES ABOVE CEILING FOR OWNERS USE. PROVIDE FIRE BLOCKING IN UNUTILIZED SLEEVES.
- P06... PROVIDE APA GRADE AC 3/4" THICK 4x4' PLYWOOD BACKBOARD FOR OWNER FURNISHED DATA EQUIPMENT. PLYWOOD SHALL BE MOUNTED ON 1 5/8" UNISTRUT PROVIDING A CABLE ROUTING SPACE BETWEEN THE WALL AND PLYWOOD. PAINT PLYWOOD WHITE.
- P07... RELOCATE CCTV CAMERA AS REQUIRED TO AVOID NEW WALL.
- P08... AIM CAMERA TO COVER RELOCATED ENTRY DOORS.

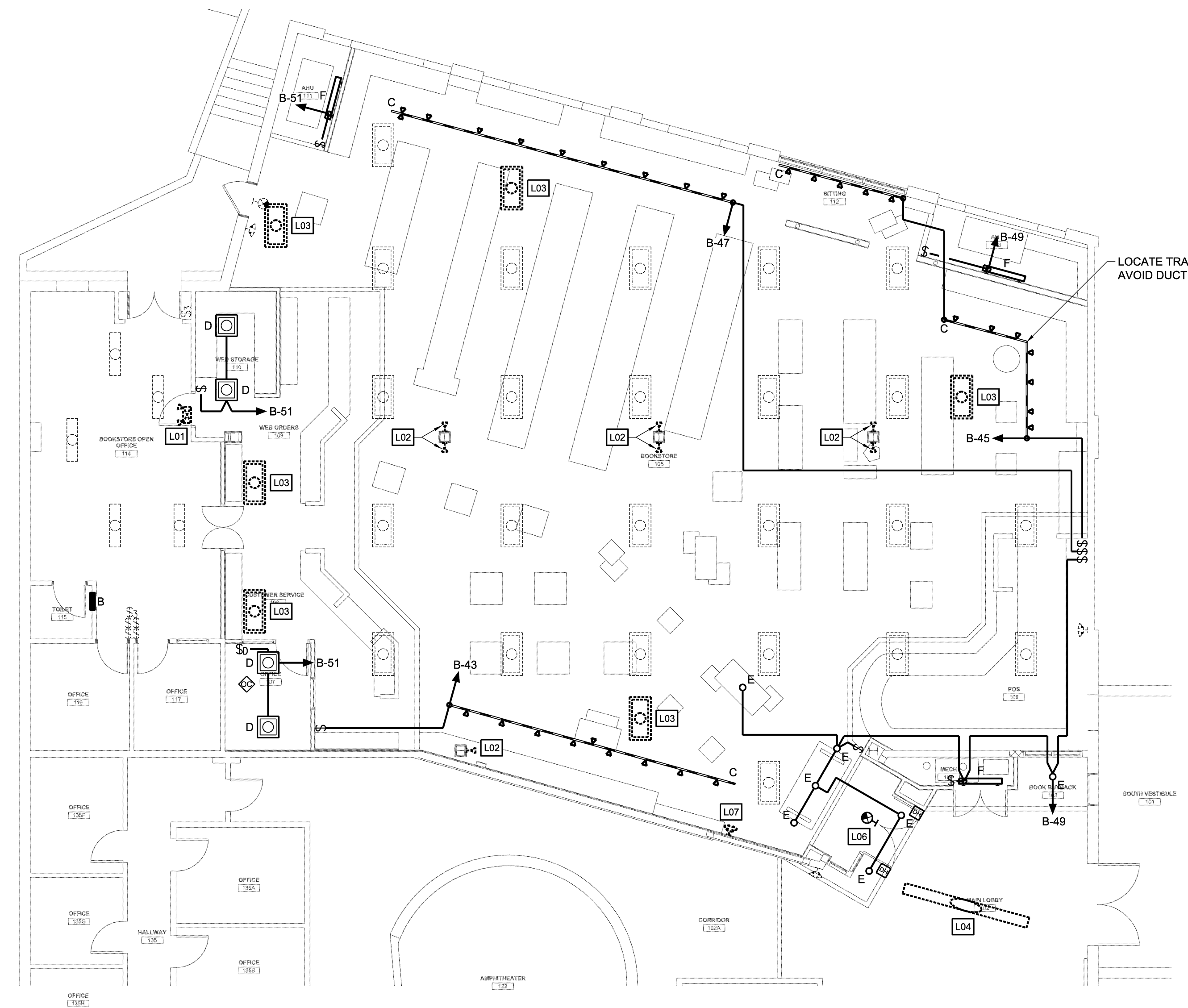
2 KEY NOTES

SCALE: NONE



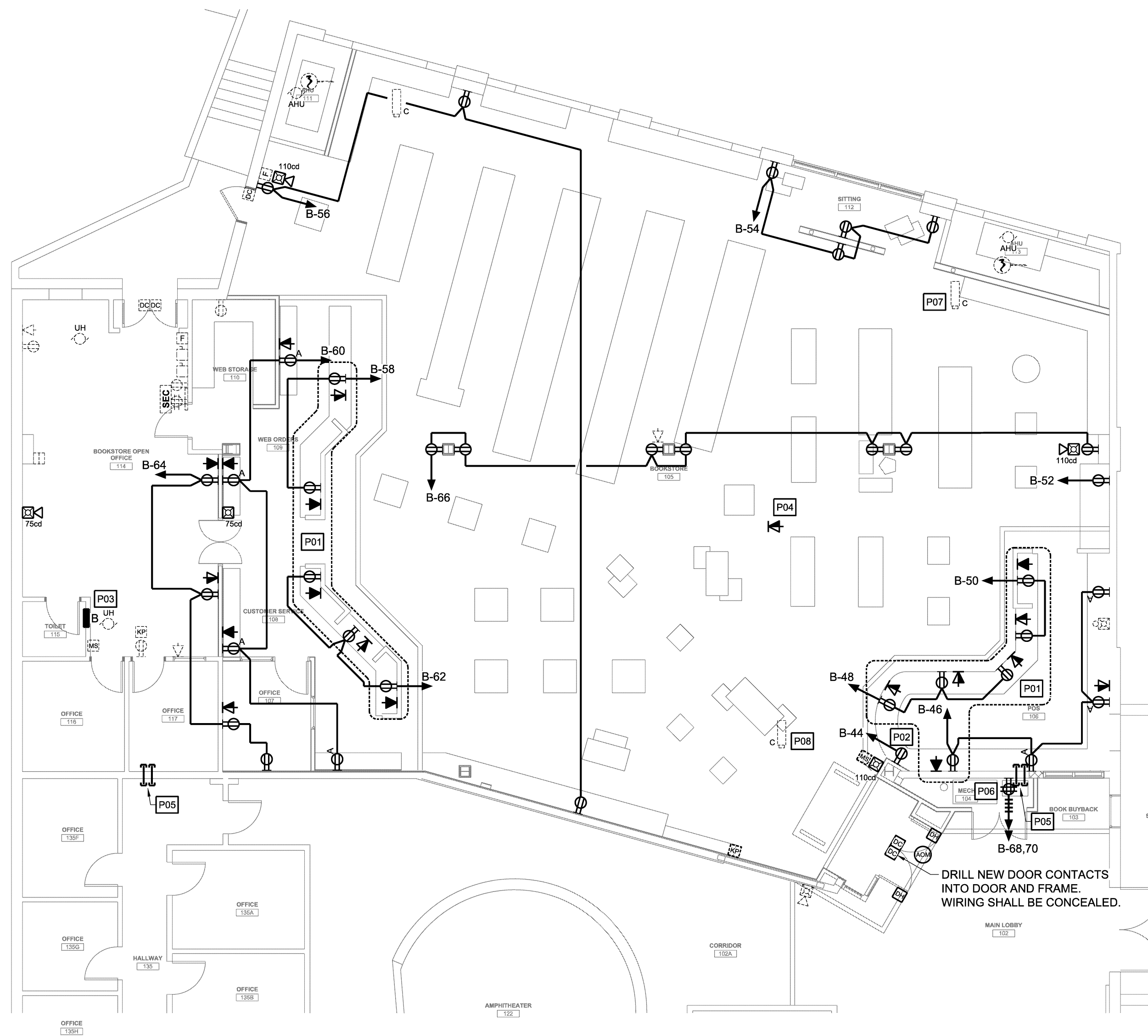
6 FLOOR PLAN - LIGHTING ALTERNATE #1

SCALE: 1/8" = 1'-0" 0 4' 8' 12'



3 FLOOR PLAN - LIGHTING BASE BID

SCALE: 1/8" = 1'-0" 0 4' 8' 12'



1 FLOOR PLAN - POWER

SCALE: 1/8" = 1'-0" 0 4' 8' 12'