



HARRIMAN

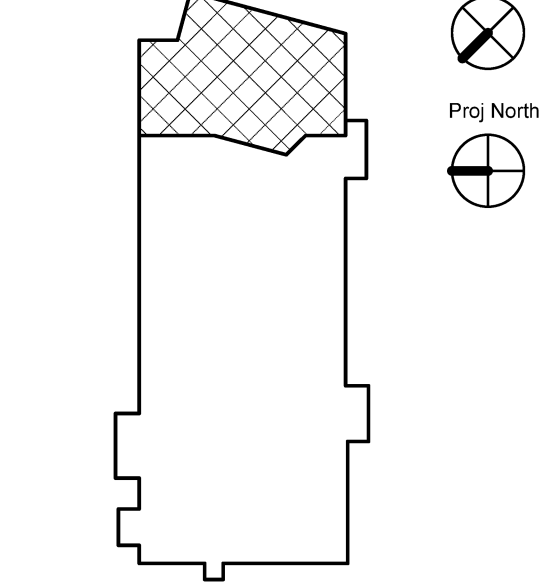
AUBURN PORTLAND MANCHESTER

**UNIVERSITY OF
SOUTHERN MAINE
WOODBURY CAMPUS
CENTER
BOOKSTORE
RENOVATIONS**

PORTLAND, ME

Harriman Project No. 13859

Key Plan

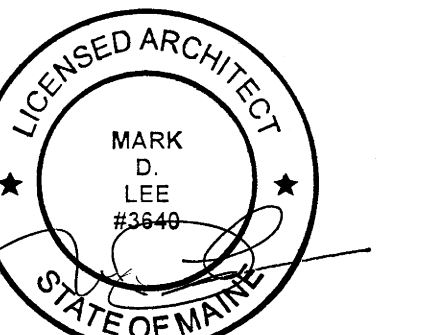


GENERAL NOTES:

1. WALL BASE TO BE RB1 IN ALL LOCATIONS UNLESS NOTED OTHERWISE.
2. ALL HM FRAMES, NEW AND EXISTING, TO BE PAINTED P1 UNLESS NOTED OTHERWISE.
3. SOFFITS (ALTERNATE #1) PAINT COLOR DESIGNATIONS ARE FOR REPRESENTATION IN THE EVENT ALTERNATE #1 IS ACCEPTED.

Issues and Revisions

Mark	Date	Description
-	11-08-13	SCHEMATIC DESIGN REVIEW
-	12-04-13	DD REVIEW
-	12-18-13	FINAL REVIEW
-	01-03-14	OWNER REVIEW
-	01-10-14	ISSUED FOR BID



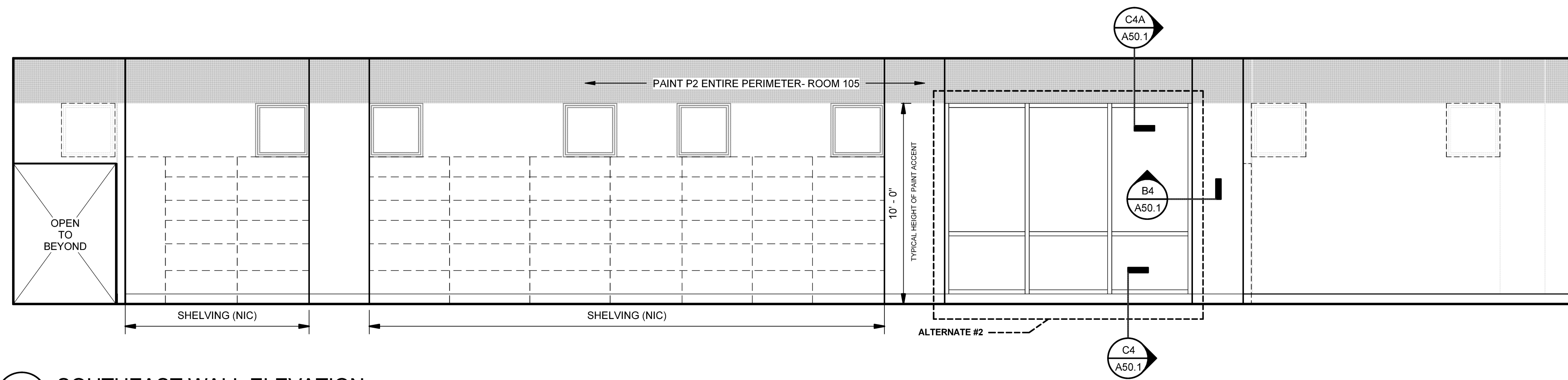
Drawing Scales

As indicated

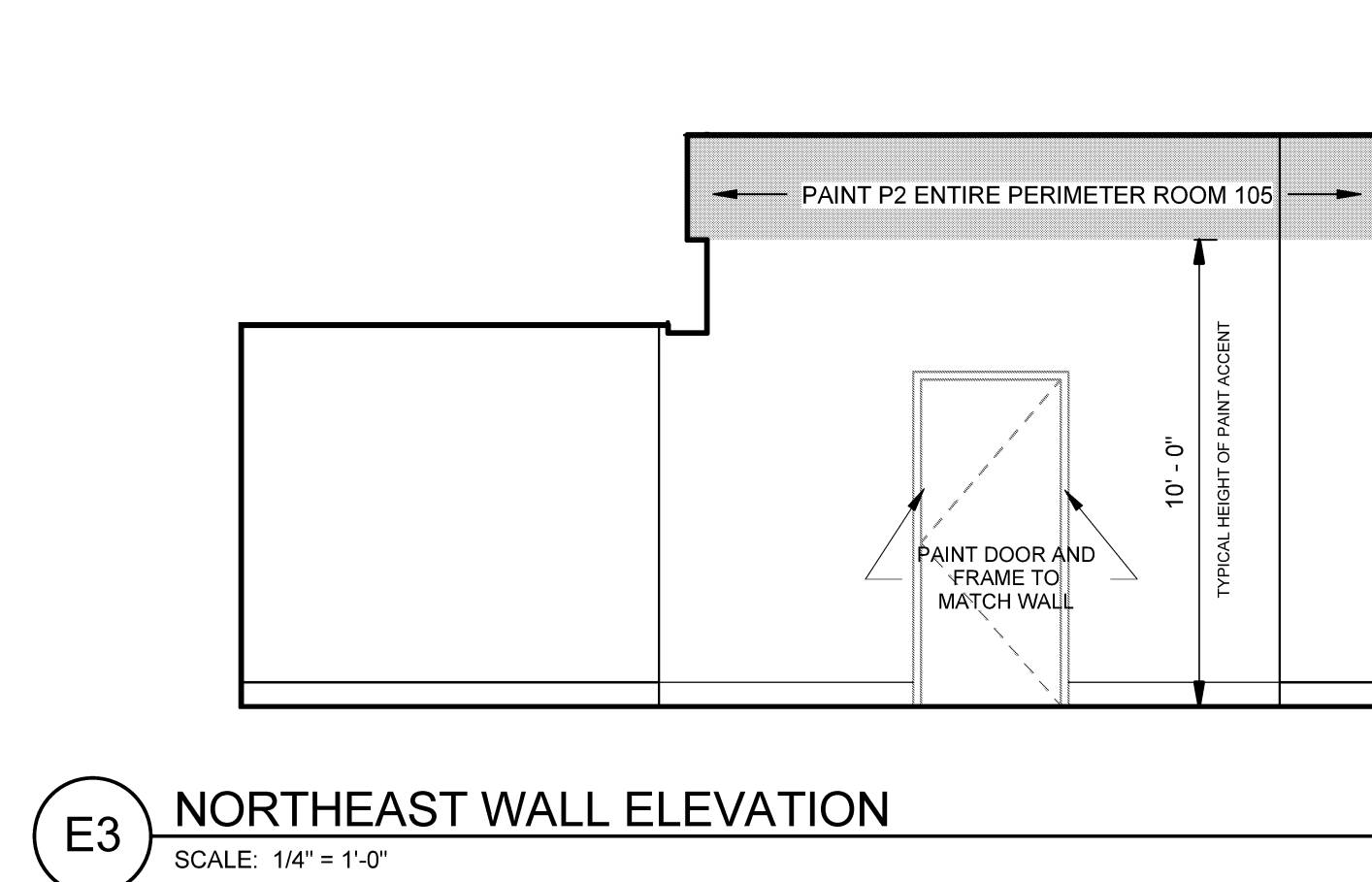
PA/PE: Designer © 2014
Drawn By: Author Harriman Associates

INTERIOR ELEVATIONS

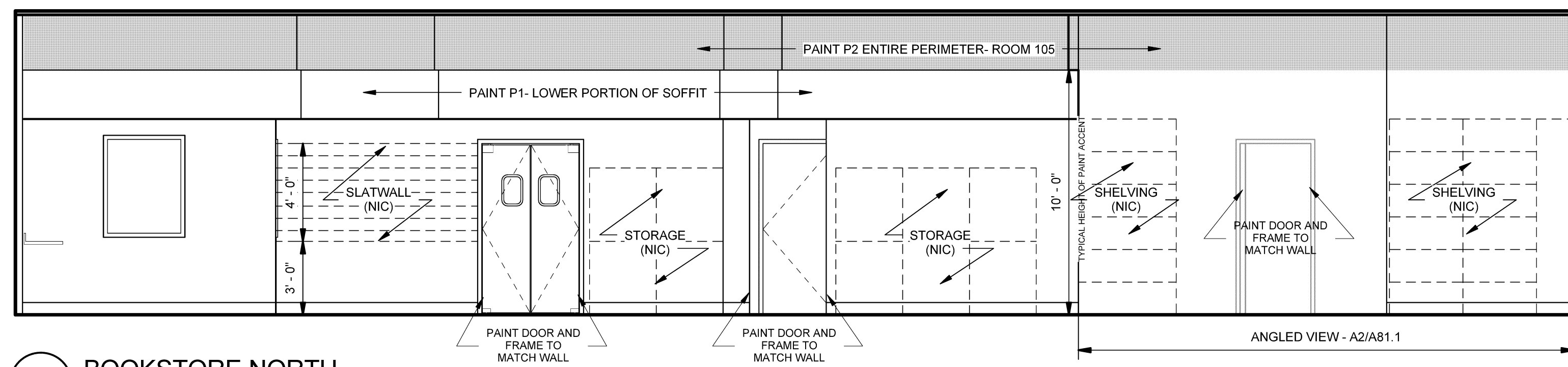
A81.1



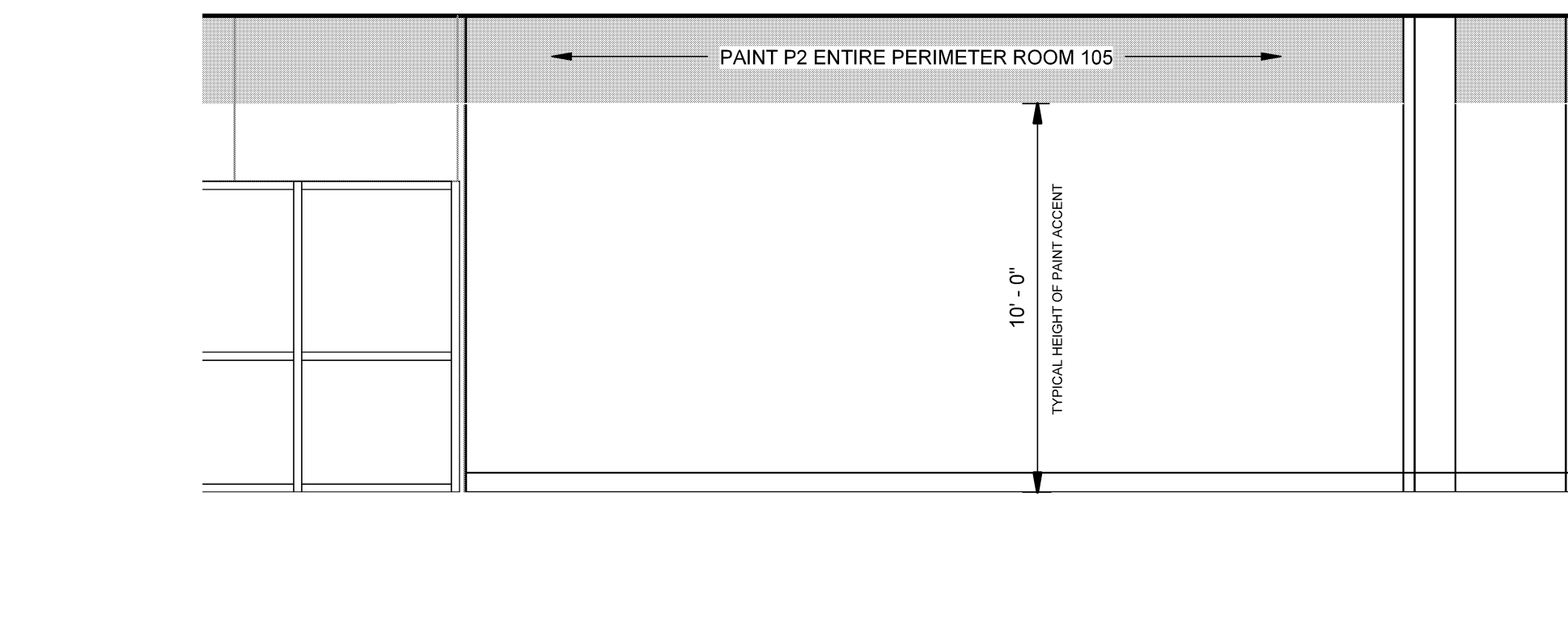
E1 SOUTHEAST WALL ELEVATION
SCALE: 1/4" = 1'-0"



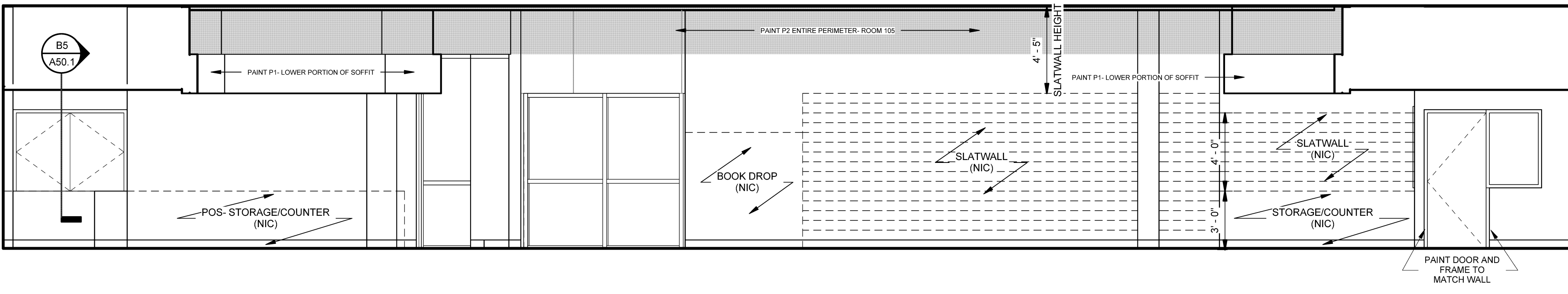
E3 NORTHEAST WALL ELEVATION
SCALE: 1/4" = 1'-0"



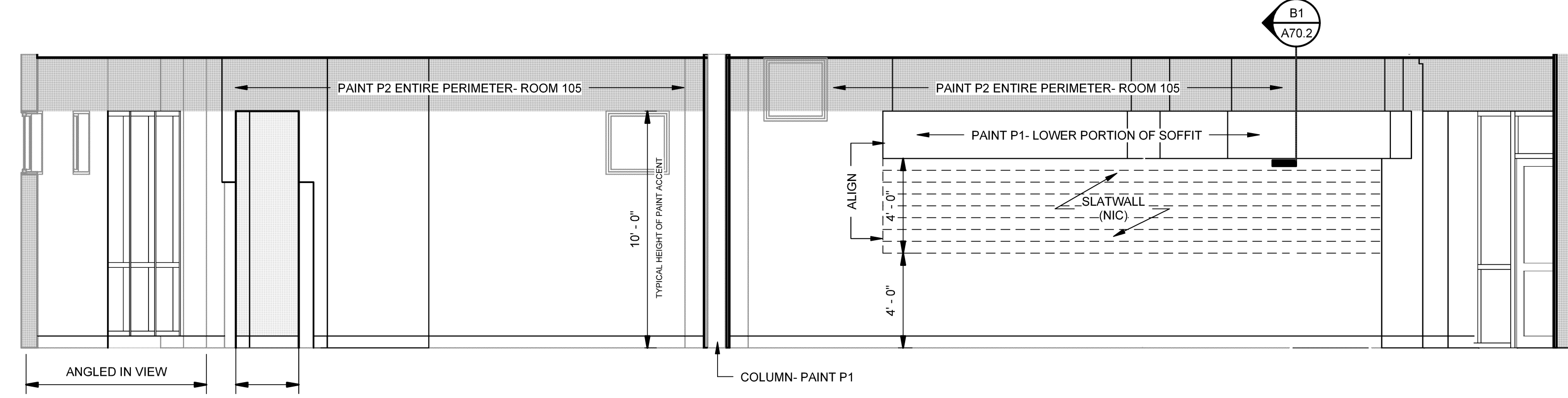
D1 BOOKSTORE NORTH
SCALE: 1/4" = 1'-0"



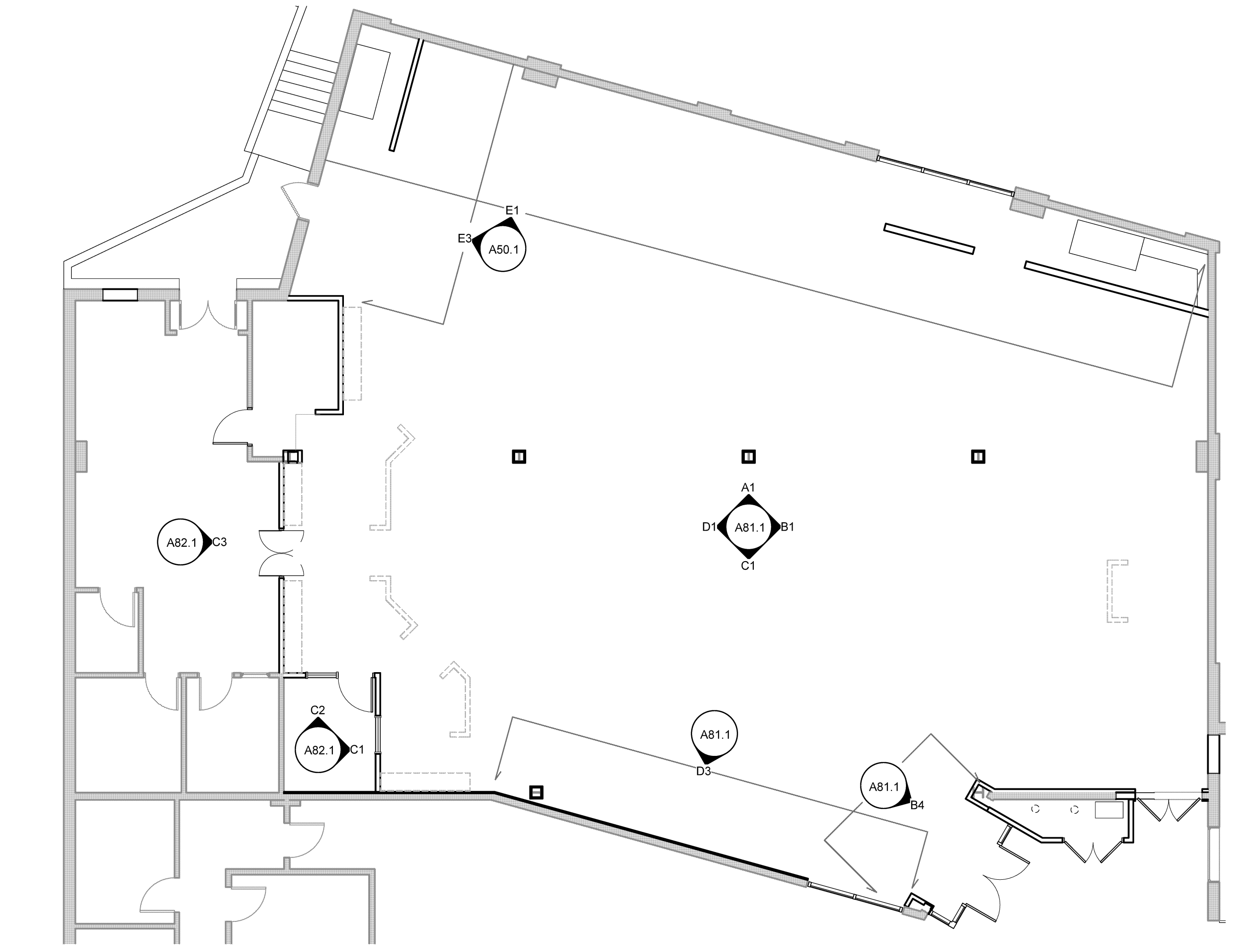
D3 NORTHWEST WALL ELEVATION
SCALE: 1/4" = 1'-0"



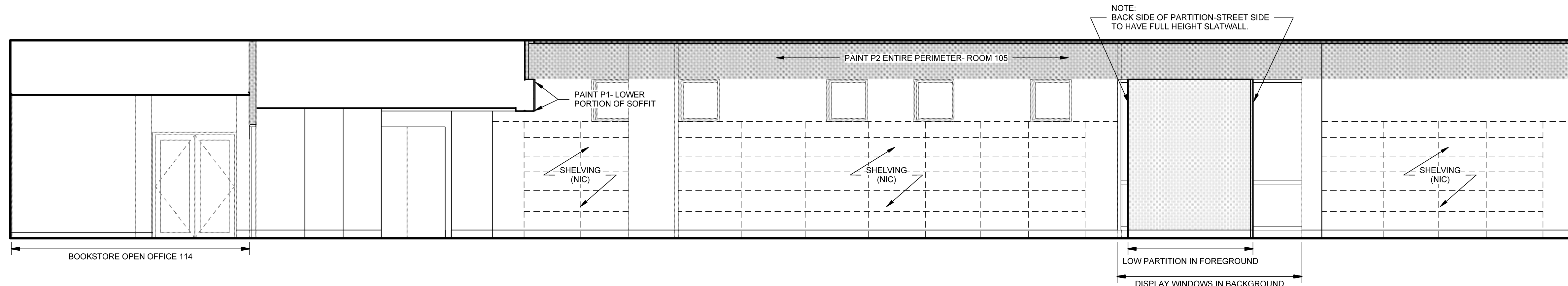
C1 BOOKSTORE WEST
SCALE: 1/4" = 1'-0"



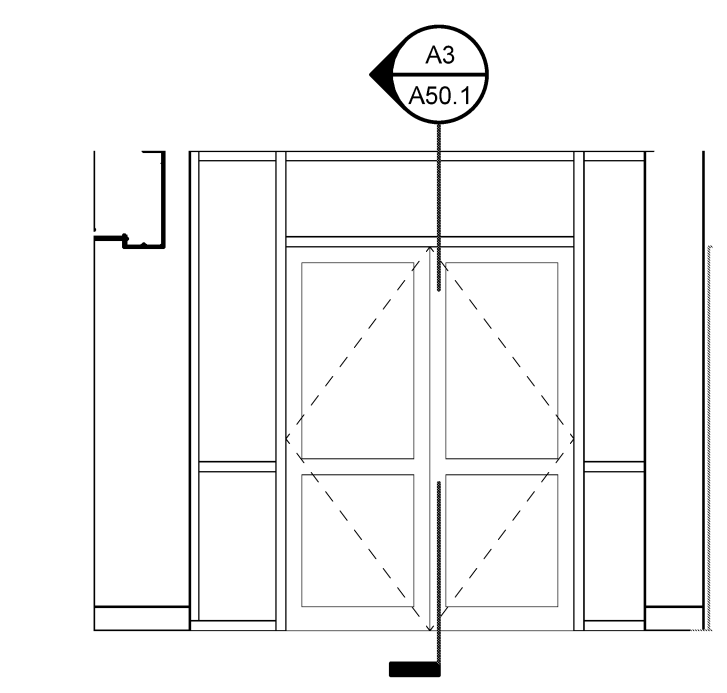
B1 BOOKSTORE SOUTH
SCALE: 1/4" = 1'-0"



B3 INTERIOR ELEVATION KEY
SCALE: 1/8" = 1'-0"



A1 BOOKSTORE EAST
SCALE: 1/4" = 1'-0"



B4 ELEVATION 3-A
SCALE: 1/4" = 1'-0"