



HARRIMAN

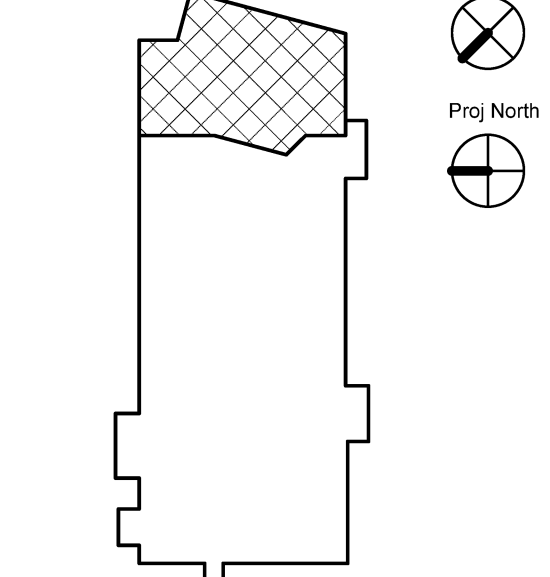
AUBURN PORTLAND MANCHESTER

UNIVERSITY OF SOUTHERN MAINE
WOODBURY CAMPUS
CENTER
BOOKSTORE
RENOVATIONS

PORTLAND, ME

Harriman Project No. 13859

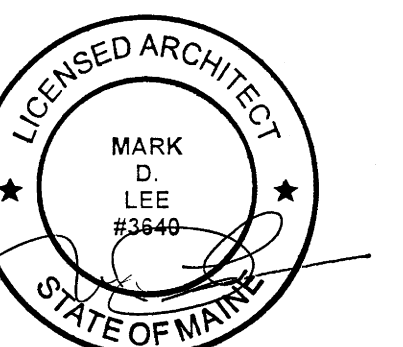
Key Plan True North



ELECTRICAL LEGEND

- NEW 2x4 PARABOLIC
- EXG 2x4 PARABOLIC
- DEMO 2x4 PARABOLIC (OR TO BE RELOCATED)
- EXG 2x2 PARABOLIC
- 2x2 DIFFUSER
- NEW RECESSED CAN
- EXG 2x2 PARABOLIC
- NEW SPRINKLER HEAD
- EXG SPRINKLER HEAD
- DEMO SPRINKLER HEAD (OR TO BE RELOCATED)
- EXG CCTV CAMERA LOCATIONS (RELOCATE AFTER NEW CEILING WORK - COORDINATE W/ OWNER)

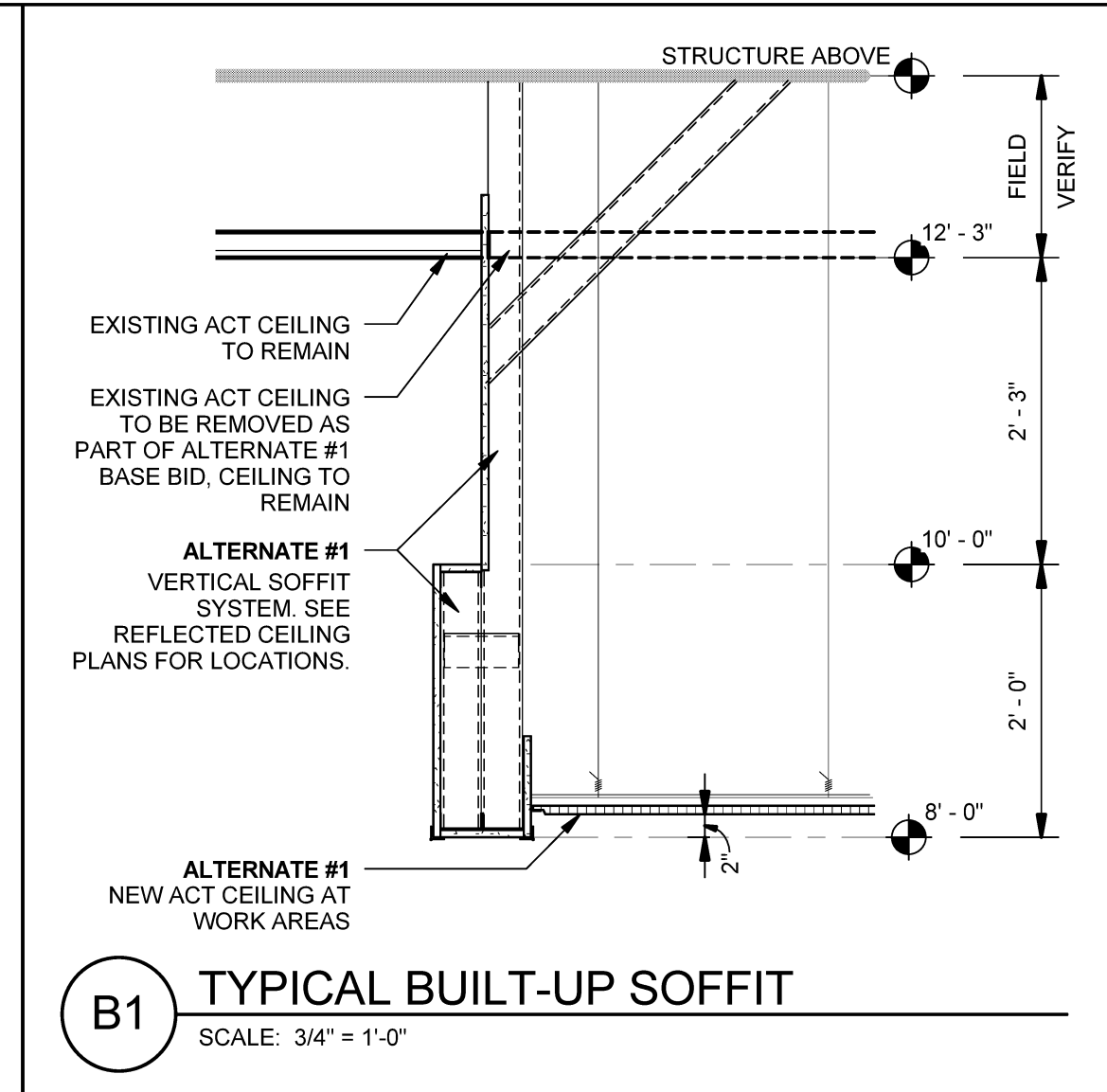
Mark	Date	Description
-	01-03-14	OWNER REVIEW
-	01-10-14	ISSUED FOR BID



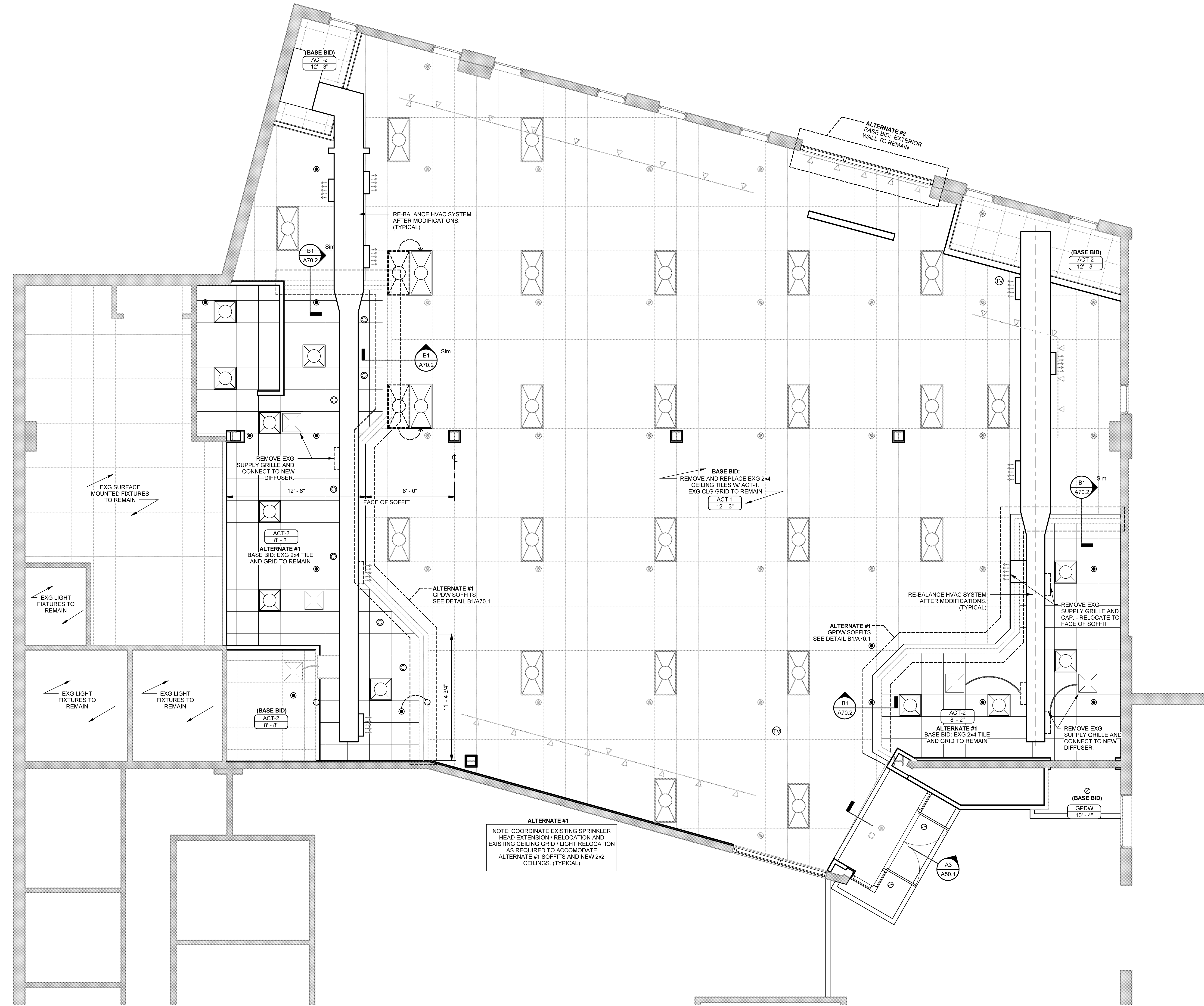
Drawing Scales	
As indicated	
PA / PE: Designer	© 2014 Harriman Associates
Drawn By: Author	

FIRST FLOOR CEILING PLAN - ALTERNATE #1

A70.2



B1 TYPICAL BUILT-UP SOFFIT
SCALE: 3/4" = 1'-0"



ALTERNATE #1
NOTE: COORDINATE EXISTING SPRINKLER HEAD EXTENSION / RELOCATION AND EXISTING CEILING GRID / LIGHT RELOCATION AS REQUIRED TO ACCOMMODATE ALTERNATE #1 SOFFITS AND NEW 2x2 CEILINGS. (TYPICAL)

A1 FIRST FLOOR CEILING PLAN
SCALE: 1/4" = 1'-0"