

HARRIMAN

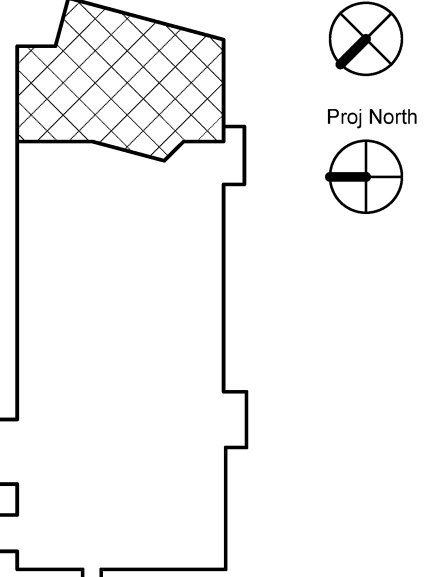
AUBURN PORTLAND MANCHESTER

UNIVERSITY OF SOUTHERN MAINE WOODBURY CAMPUS CENTER BOOKSTORE RENOVATIONS

PORTLAND, ME

Harriman Project No. 13859

Key Plan True North

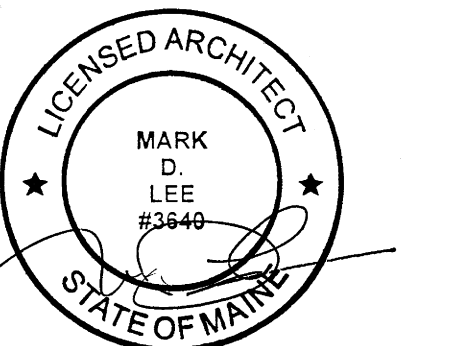


ELECTRICAL LEGEND

- NEW 2x4 PARABOLIC
- EXG 2x4 PARABOLIC
- DEMO 2x4 PARABOLIC (OR TO BE RELOCATED)
- EXG 2x2 PARABOLIC
- 2x2 DIFFUSER
- NEW RECESSED CAN
- EXG 2x2 PARABOLIC
- NEW SPRINKLER HEAD
- EXG SPRINKLER HEAD
- DEMO SPRINKLER HEAD OR TO BE RELOCATED
- EXG CCTV CAMERA LOCATIONS RELOCATE AFTER NEW CEILING WORK - COORDINATE W/ OWNER

Issues and Revisions

Mark	Date	Description
-	11-08-13	SCHEMATIC DESIGN REVIEW
-	12-04-13	DD REVIEW
-	12-18-13	FINAL REVIEW
-	01-03-14	OWNER REVIEW
-	01-10-14	ISSUED FOR BID



Drawing Scales

1/4" = 1'-0"

PA / PE: Designer © 2014

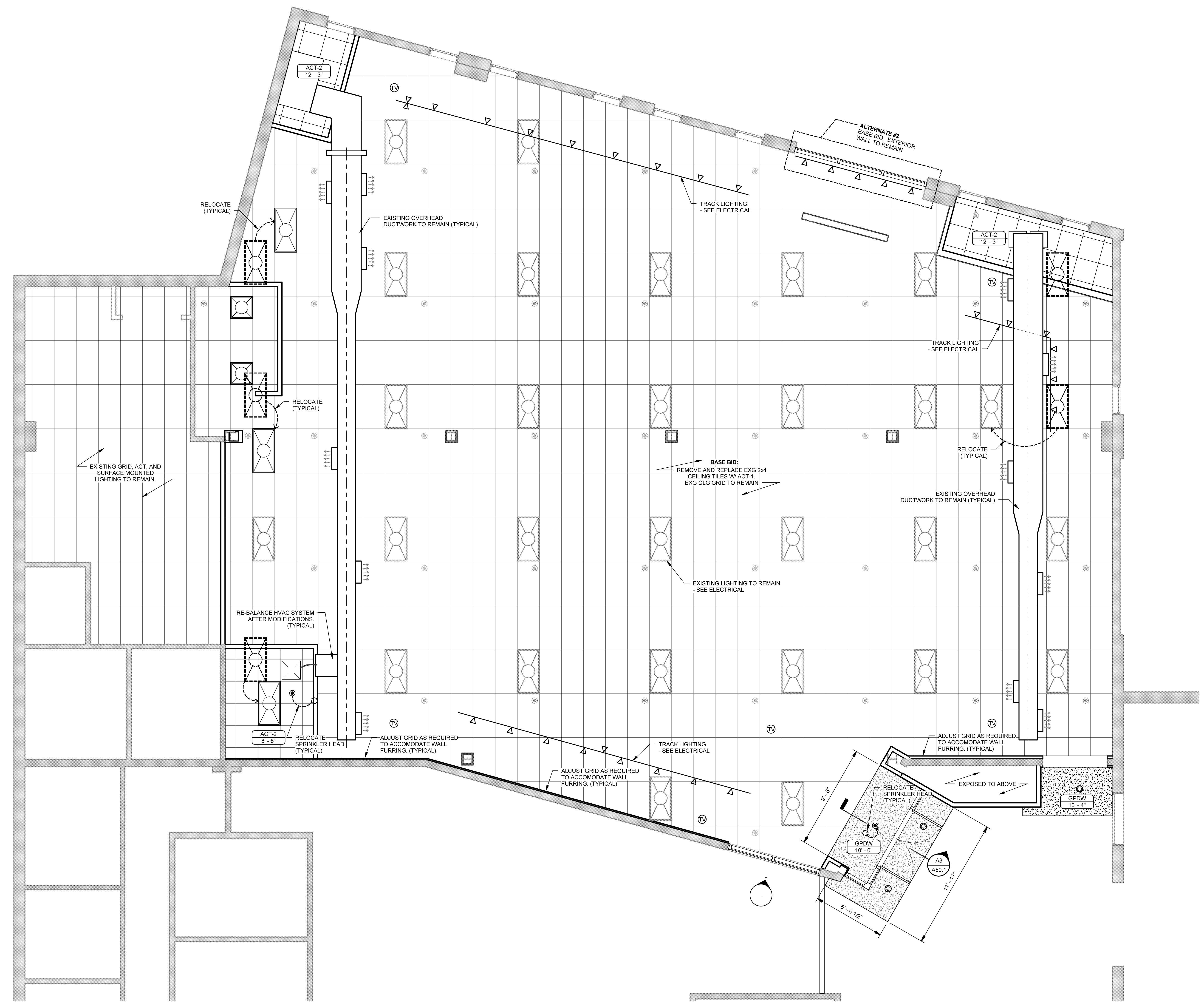
Drawn By: Author Harriman Associates

FIRST FLOOR CEILING PLAN - BASE BID

A70.1

A1 FIRST FLOOR CEILING PLAN - BASE BID

SCALE: 1/4" = 1'-0"



ALTERNATE #2
BASE BID - EXTERIOR
WALL TO REMAIN

ACT-2
12'-3"

ACT-2
8'-8"

GPDW
10'-0"

A3
A50.1

BASE BID:
REMOVE AND REPLACE EXG 2x4
CEILING TILES W/ ACT-1.
EXG CLG GRID TO REMAIN

EXISTING GRID, ACT, AND
SURFACE MOUNTED
LIGHTING TO REMAIN

ADJUST GRID AS REQUIRED
TO ACCOMMODATE WALL
FURRING (TYPICAL)

ADJUST GRID AS REQUIRED
TO ACCOMMODATE WALL
FURRING (TYPICAL)

EXPOSED TO ABOVE
GPDW
10'-4"