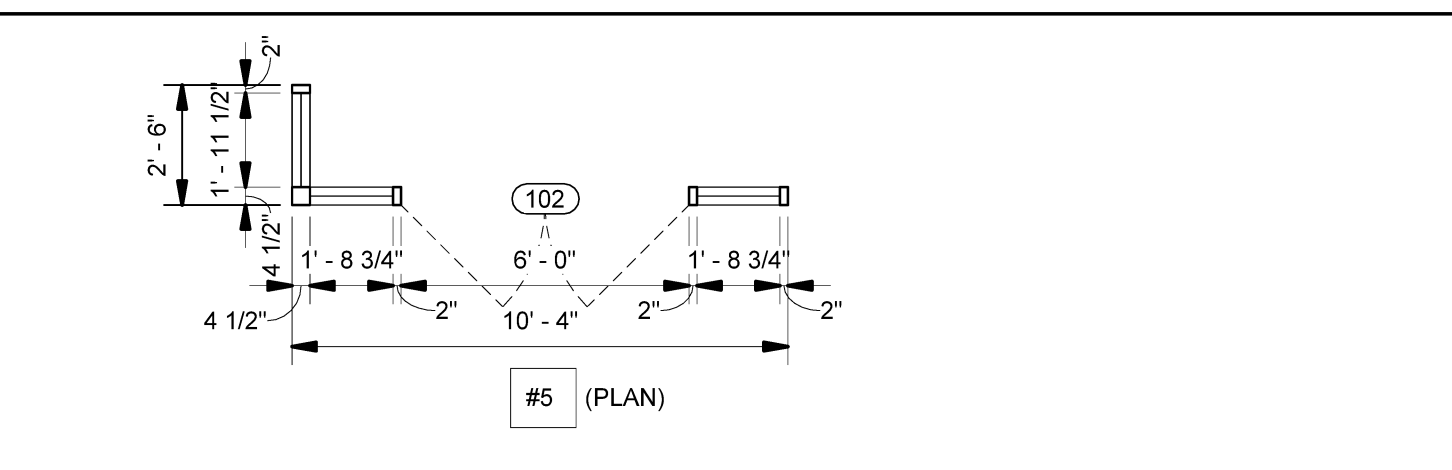


DOOR SCHEDULE													
Mark	DOOR			Door Material	Door Type	Glass	FRAME		DETAILS		Fire Rating	Comments	
	Width	Height	Thickness				Frame Material	Frame Type	Head	Jamb			Sill
102	6'-0"	8'-0"	1 3/4"	WD	LG	TEMP	HM	5	C3/A50.1	C2/A50.1	C3/A50.1	RATED	
103	5'-6"	4'-0"	1 3/4"	WD	F		HM	2	B5/A50.1	A5/A50.1	B5/A50.1	RATED	
104	5'-0"	7'-0"	1 3/4"	WD	F		HM	1	C1B/A50.1	C1A/A50.1			
107	3'-0"	7'-0"	1 3/4"	WD	N	TEMP	HM	3	C1B/A50.1	C1A/A50.1			
108	4'-0"	7'-0"	1 1/4"		T		HM	1					
110	3'-0"	7'-0"	1 3/4"	WD	F		HM	1	C1B/A50.1	C1A/A50.1			

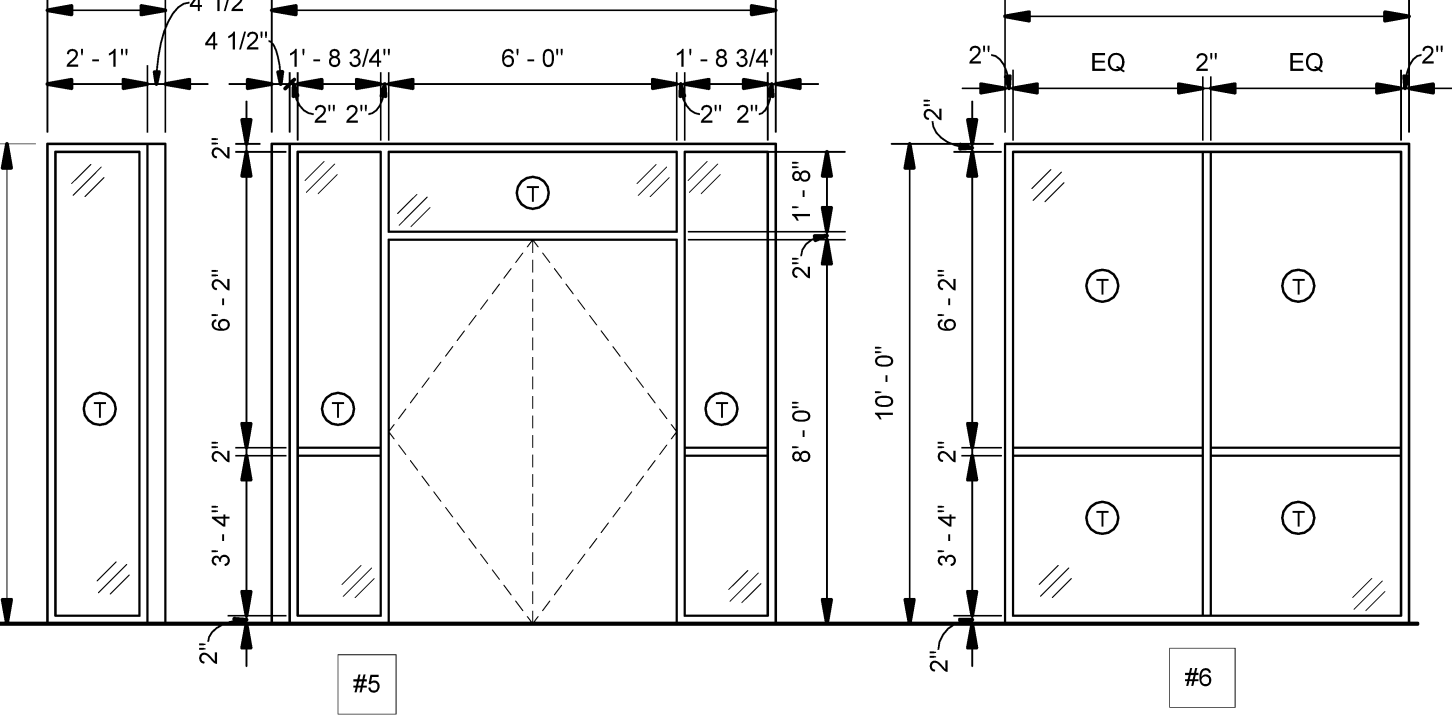
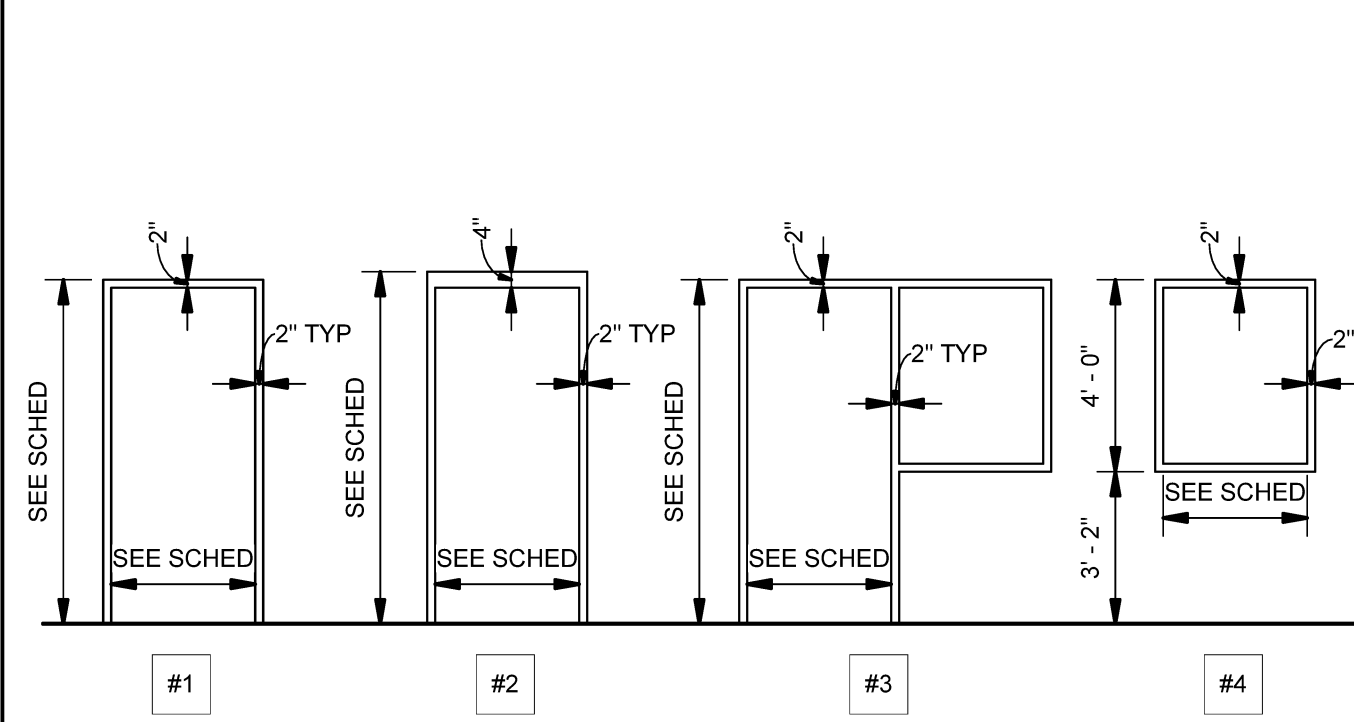
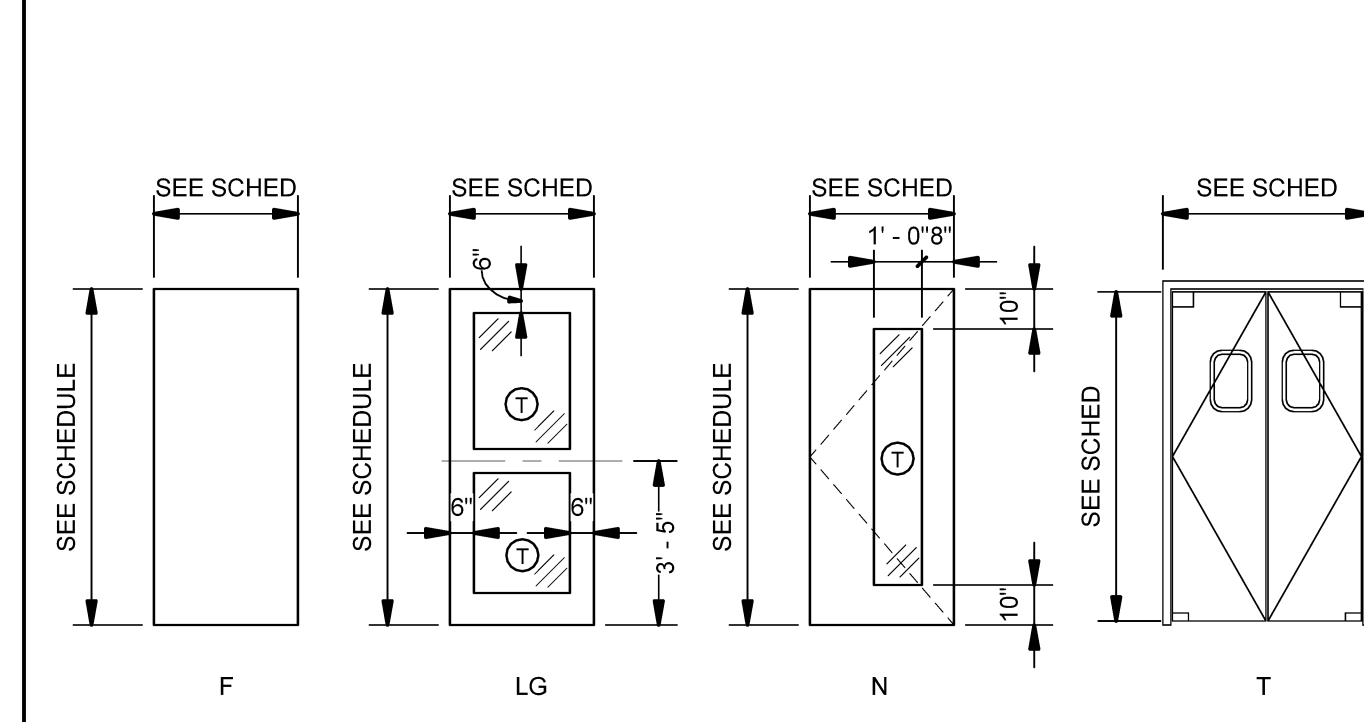
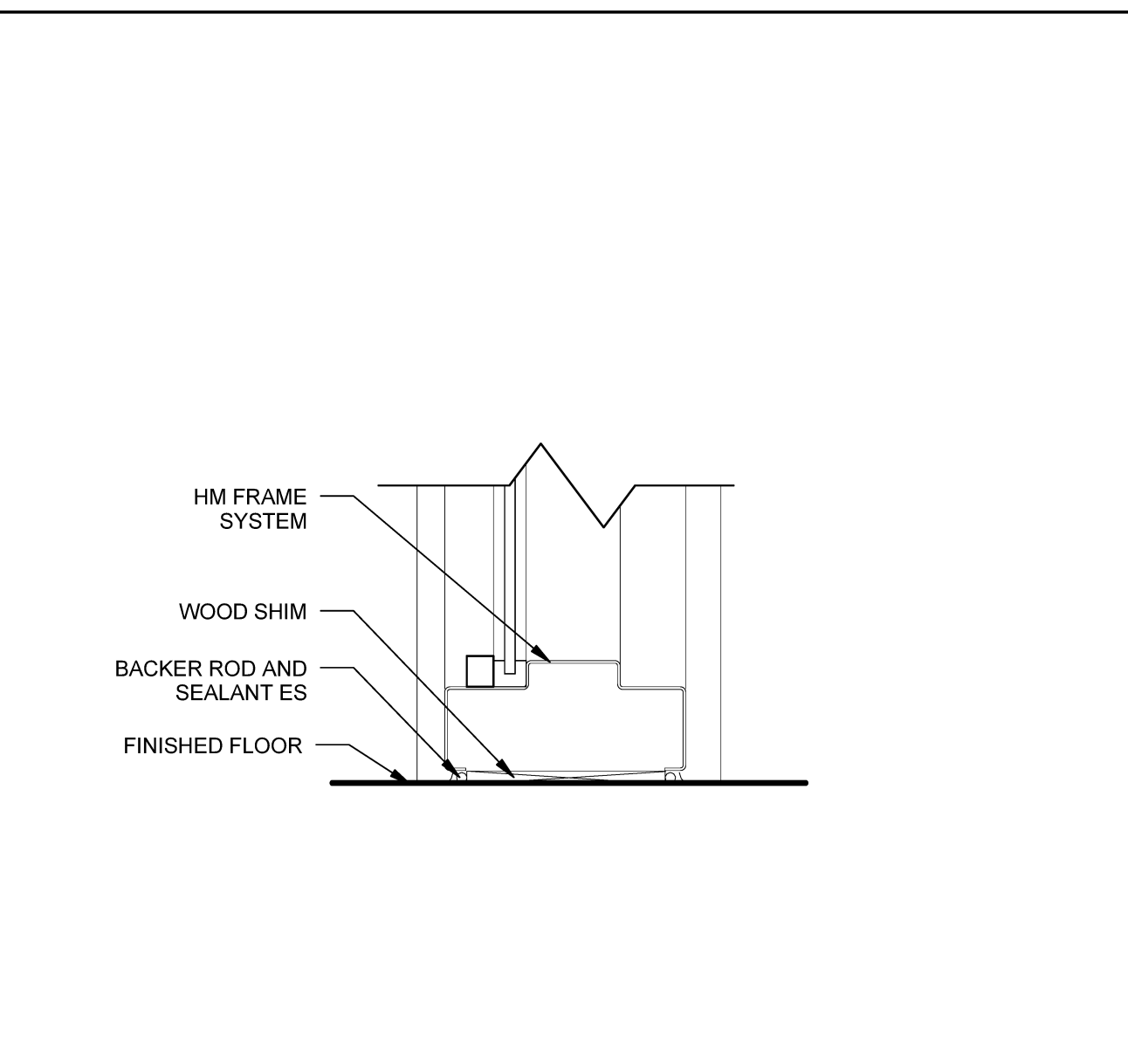


BORROWED LITE SCHEDULE				
MARK	FRAME TYPE	SILL HEIGHT	FRAME MATERIAL	GLAZING
BL01	4	3'-2"	HM	TEMP
BL02	3	3'-2"	HM	TEMP

GENERAL NOTES

- FIELD VERIFY ALL ROUGH OPENING DIMENSIONS PRIOR TO FABRICATION
- ALL GLAZING IN WINDOWS AND SIDE LITES IS 1" INSULATING, UNLESS NOTED OTHERWISE
- PANES INDICATED WITH A (T) SHALL BE TEMPERED

(ALTERNATE #2)

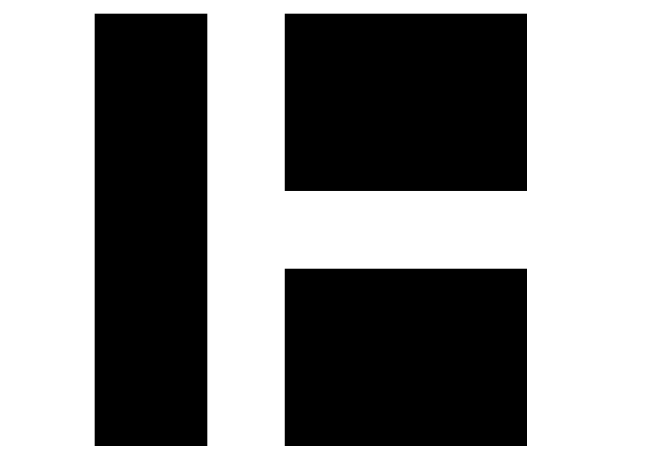


D4 HM SILL AT INTERIOR FLOOR
SCALE: 3/8" = 1'-0"

D1 DOOR TYPES
SCALE: 1/4" = 1'-0"

D2 HOLLOW METAL FRAME TYPES
SCALE: 1/4" = 1'-0"

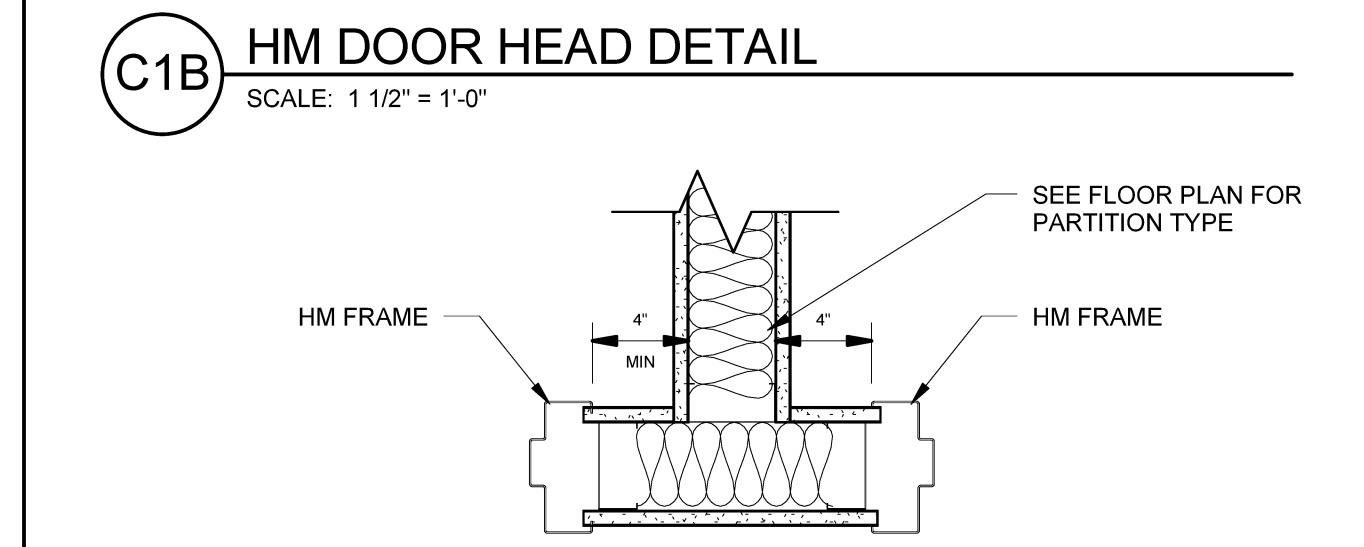
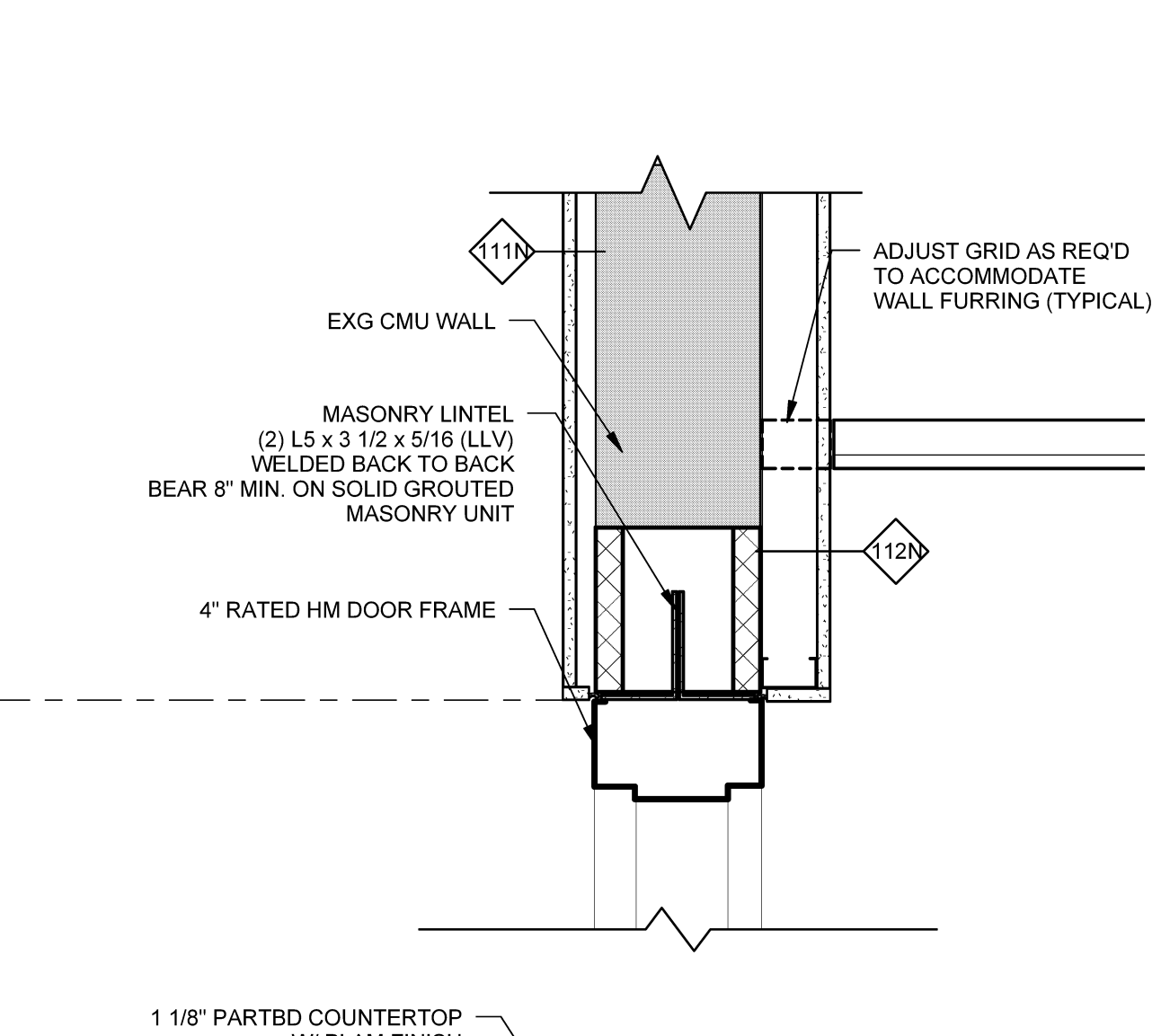
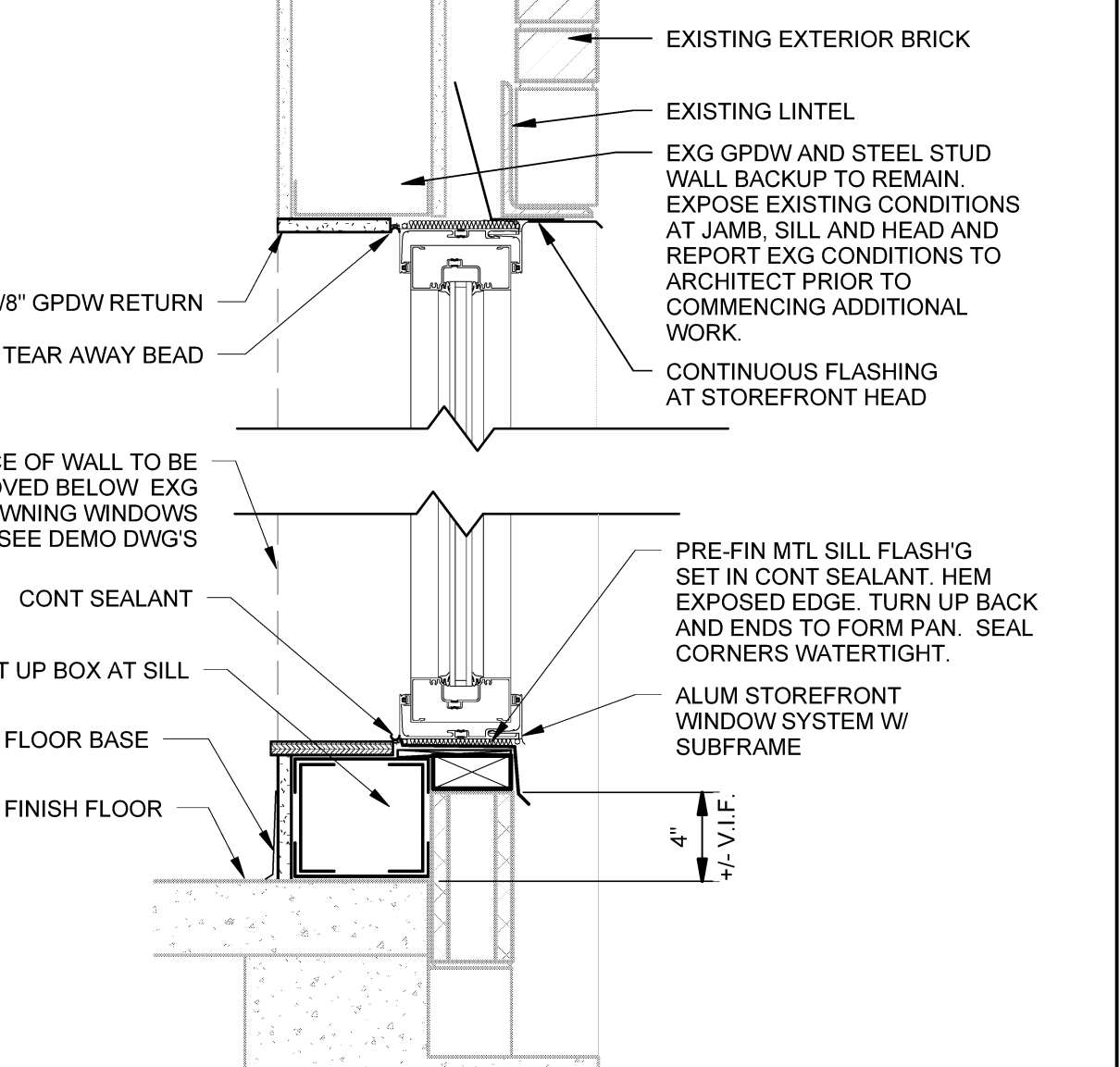
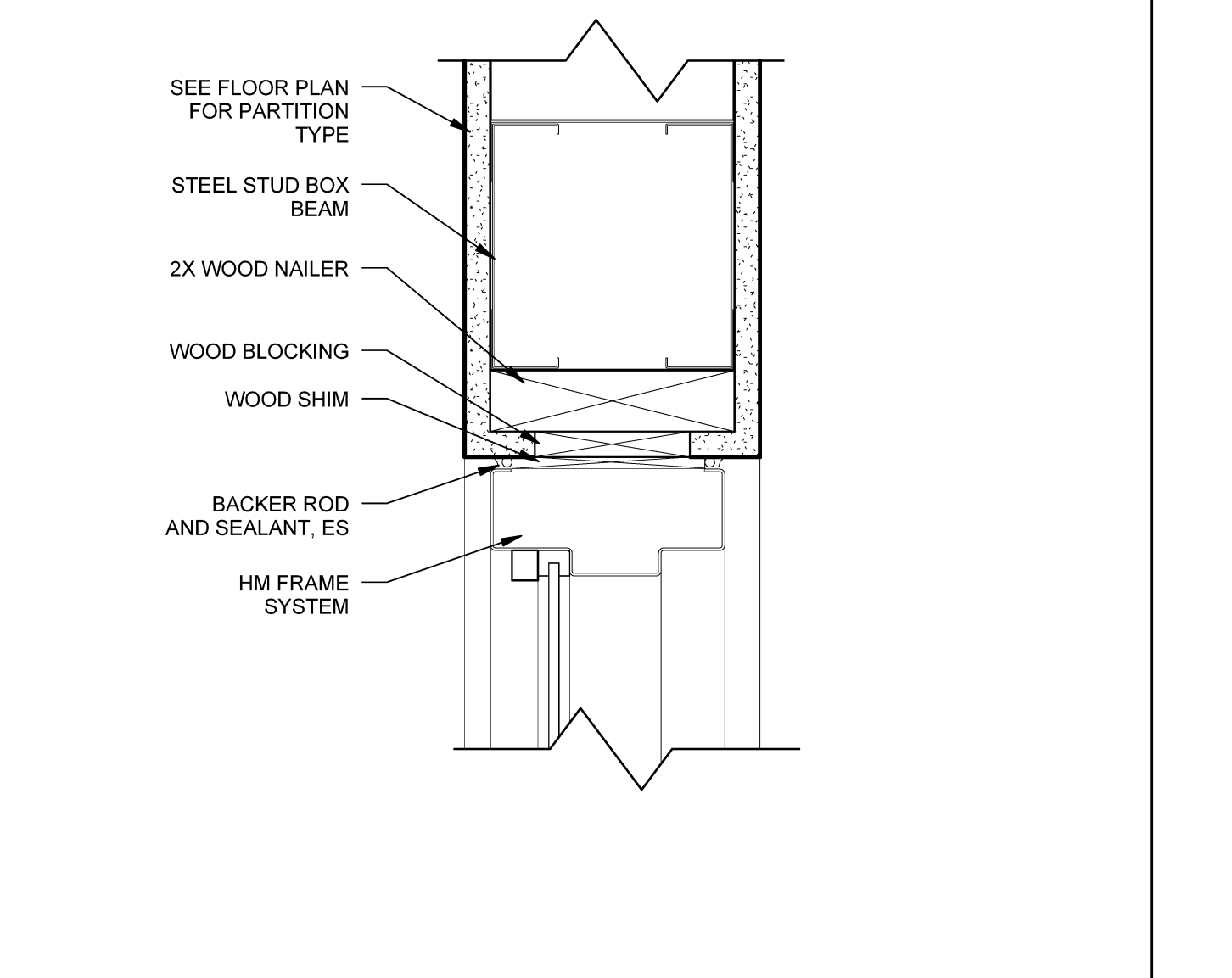
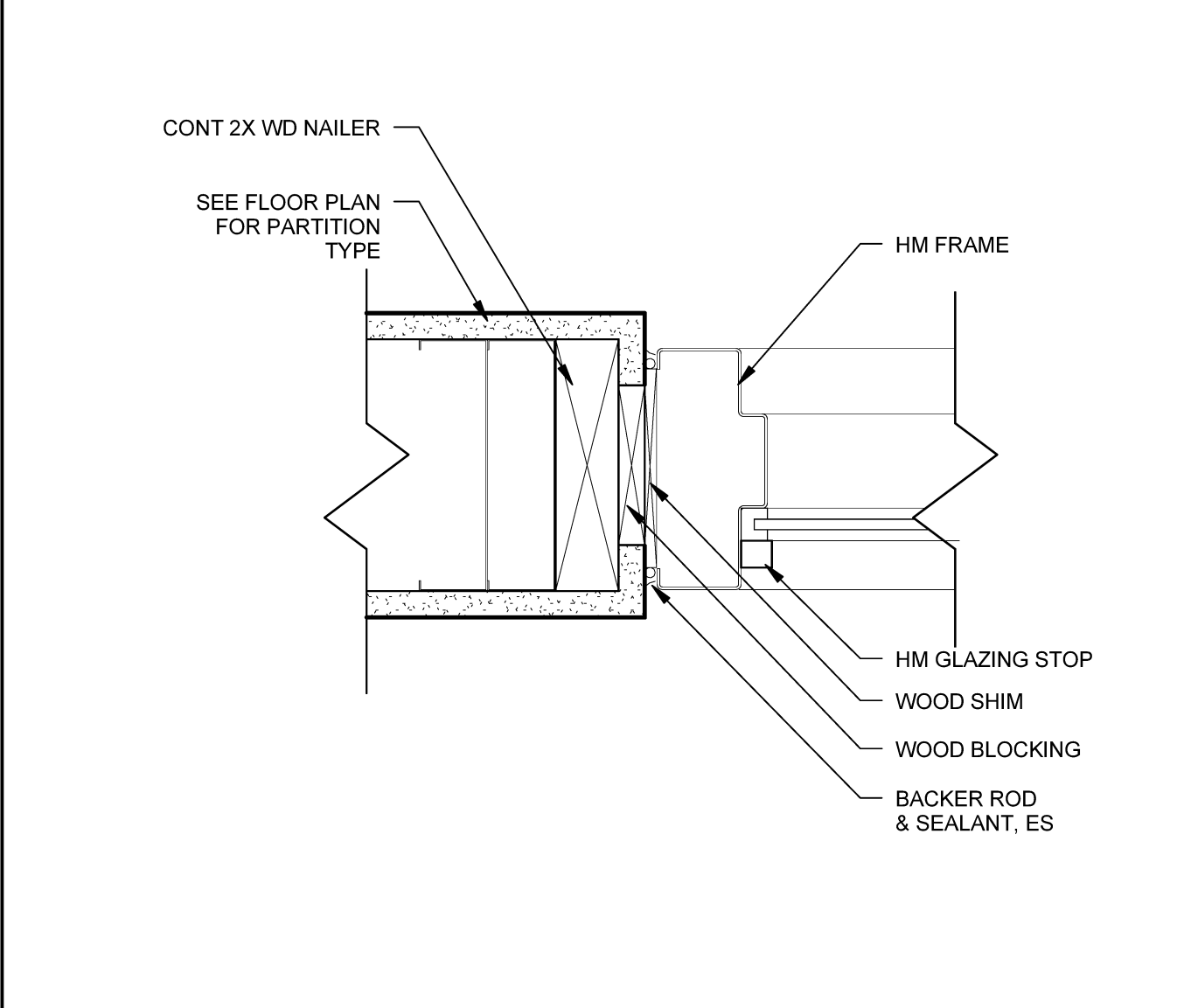
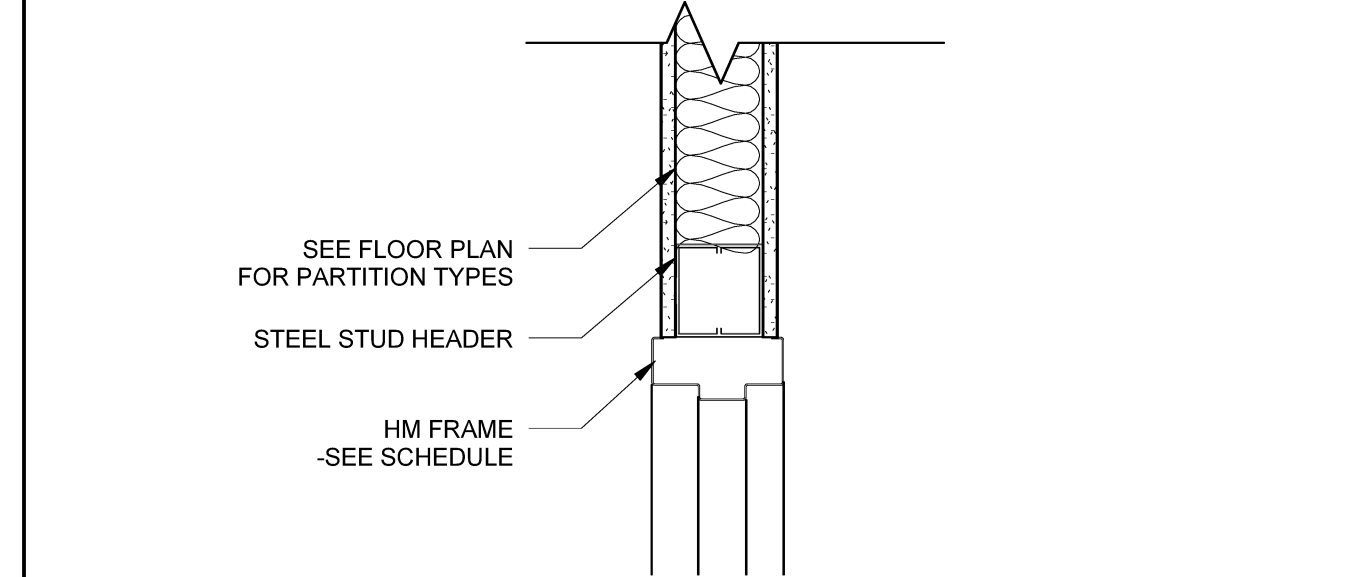
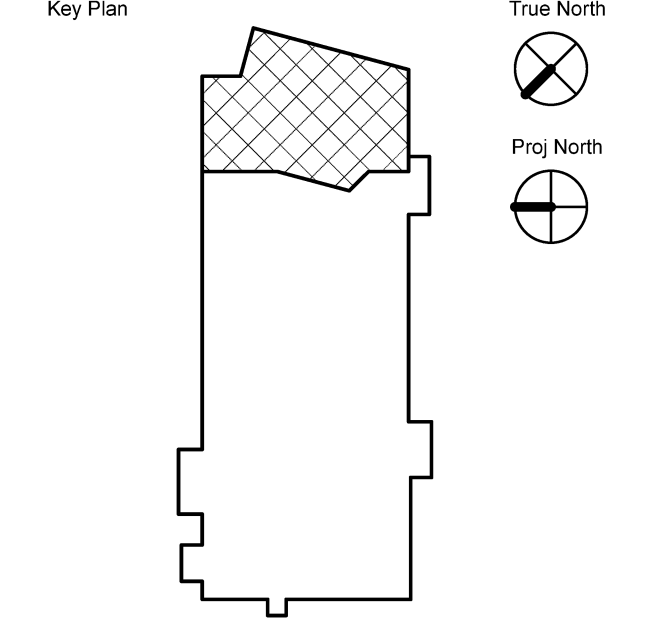
D3 STOREFRONT FRAME TYPES
SCALE: 1/4" = 1'-0"



HARRIMAN
AUBURN PORTLAND MANCHESTER

UNIVERSITY OF SOUTHERN MAINE
WOODBURY CAMPUS
CENTER BOOKSTORE
RENOVATIONS
PORTLAND, ME

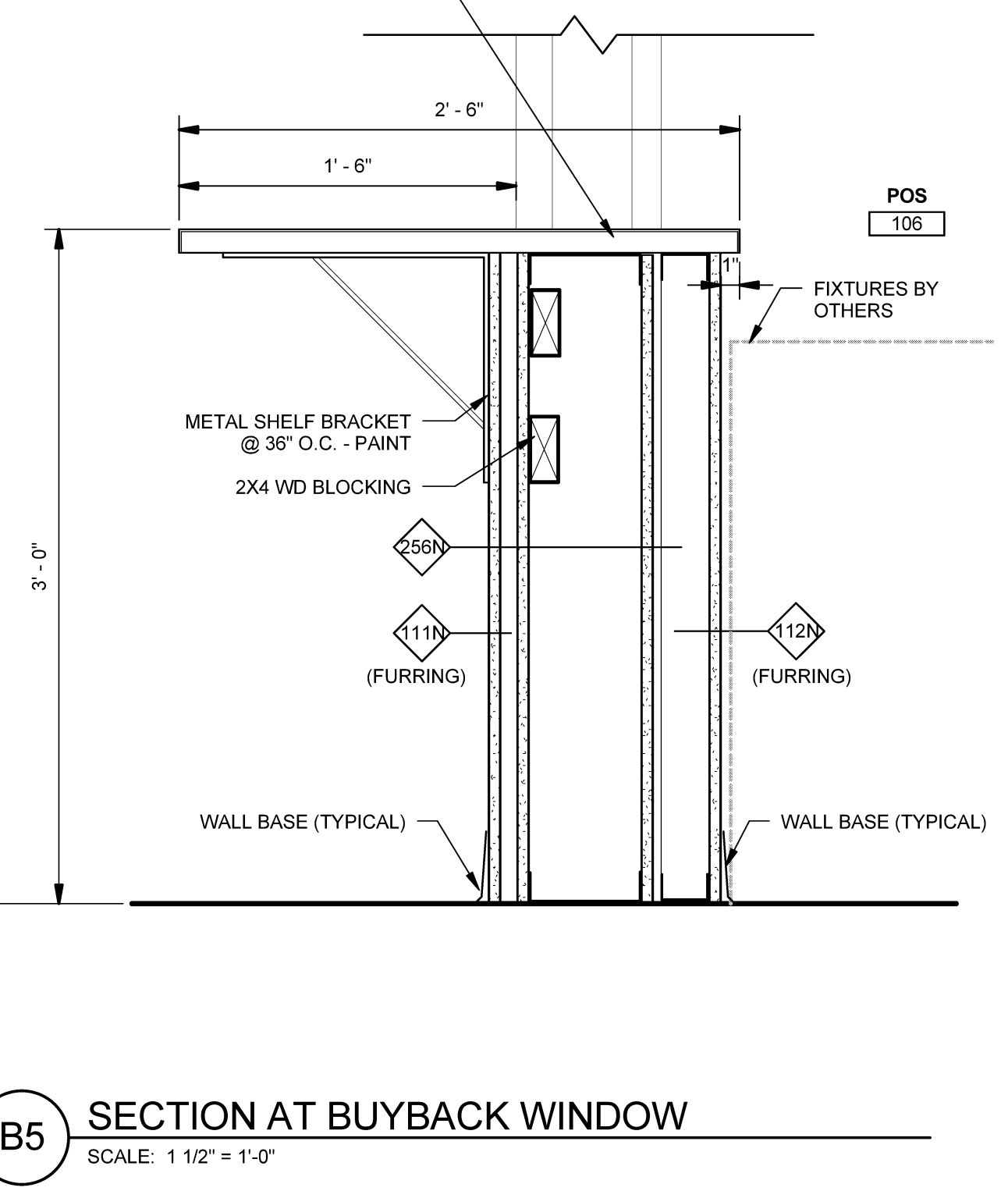
Harriman Project No. 13659



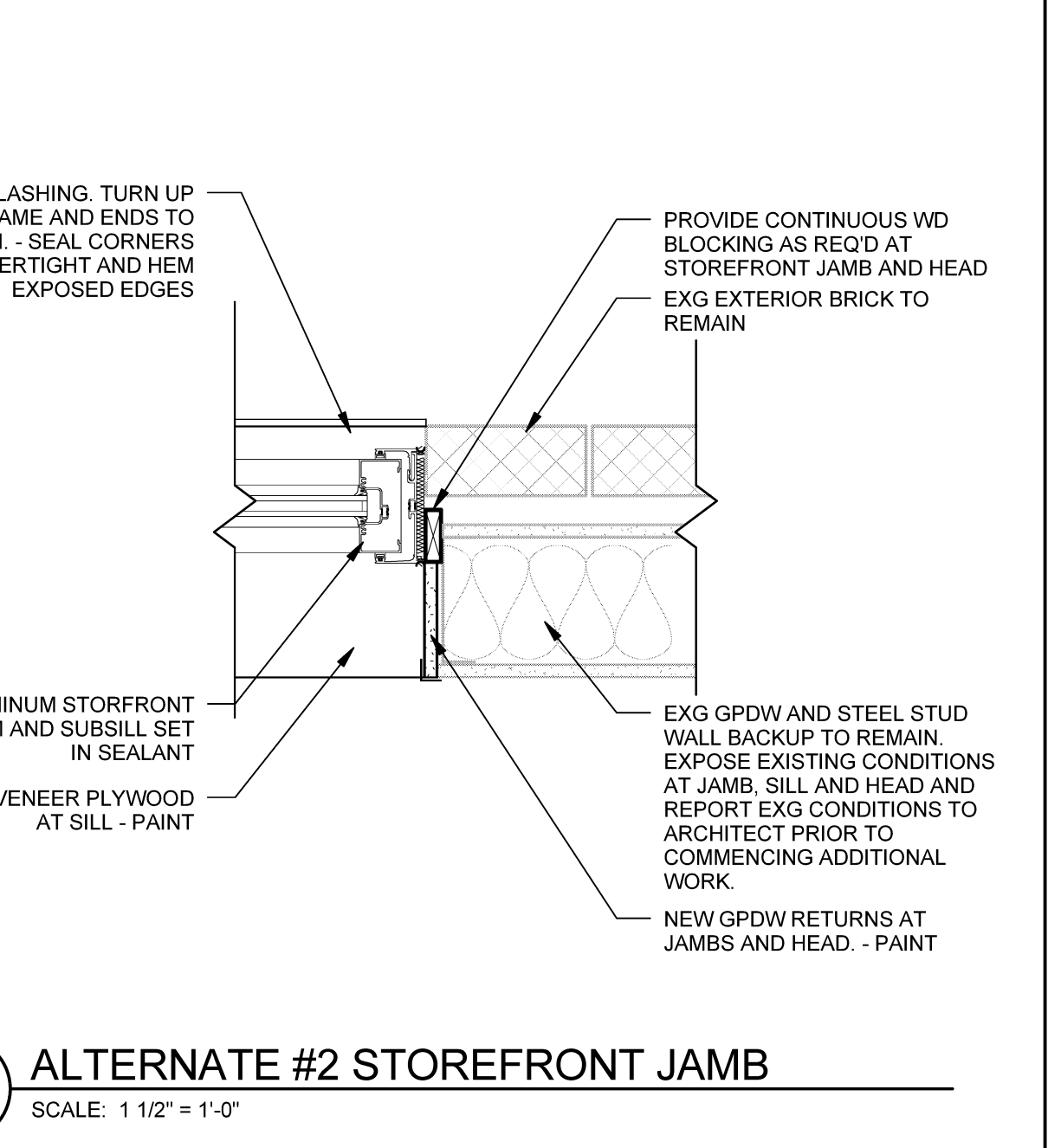
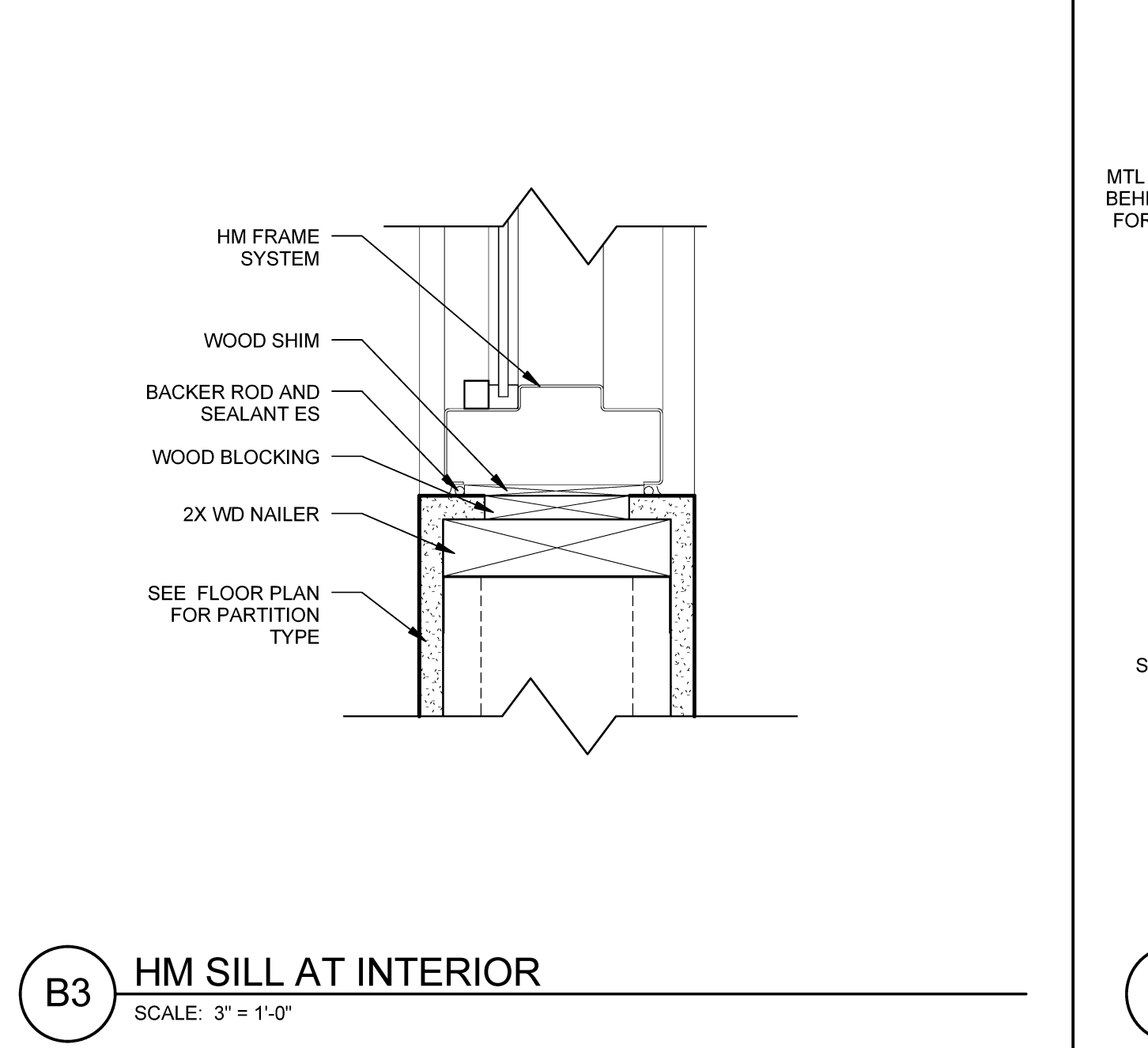
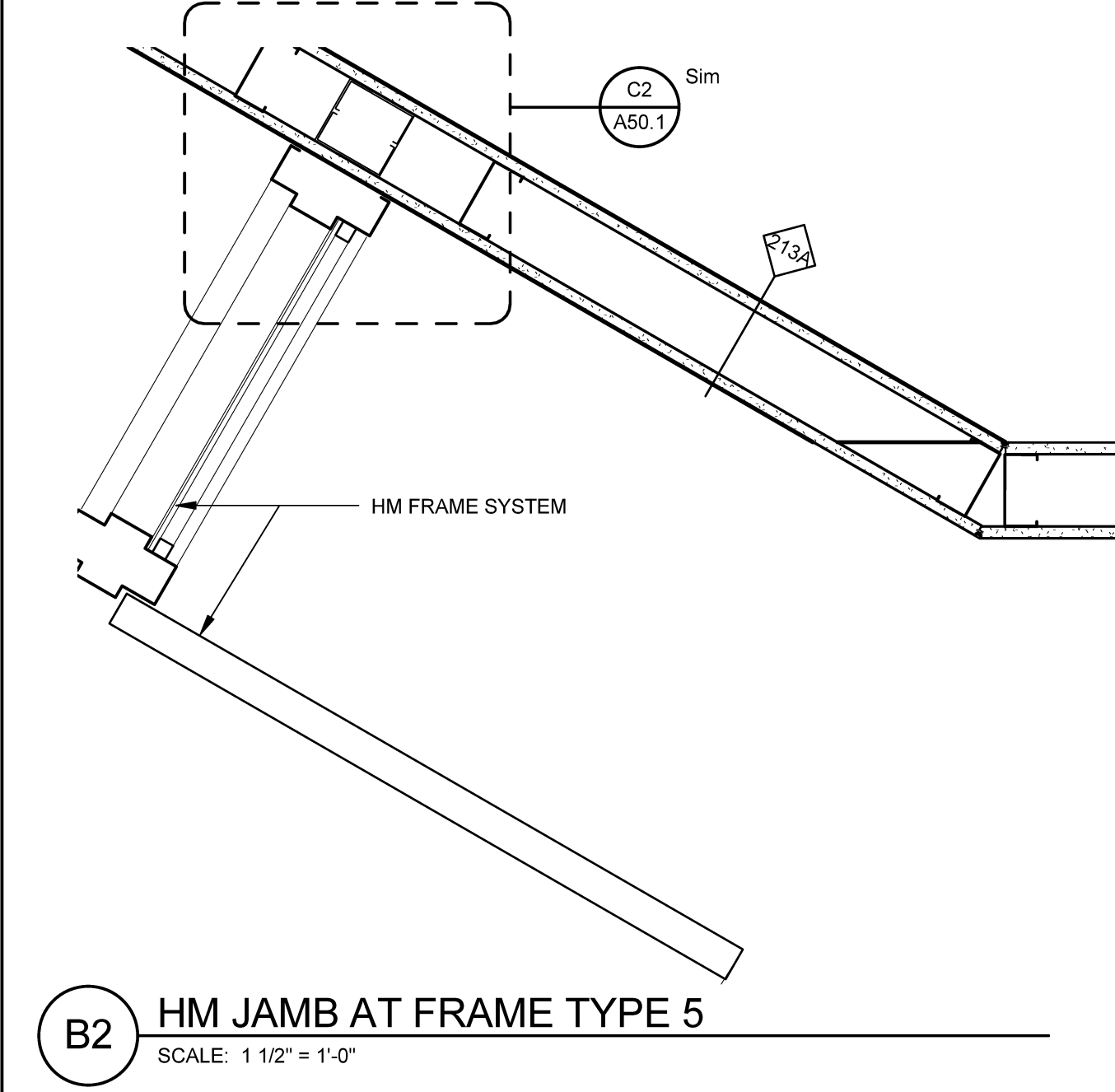
C2 HM JAMB AT INTERIOR
SCALE: 3/8" = 1'-0"

C3 HM HEAD AT INTERIOR
SCALE: 3/8" = 1'-0"

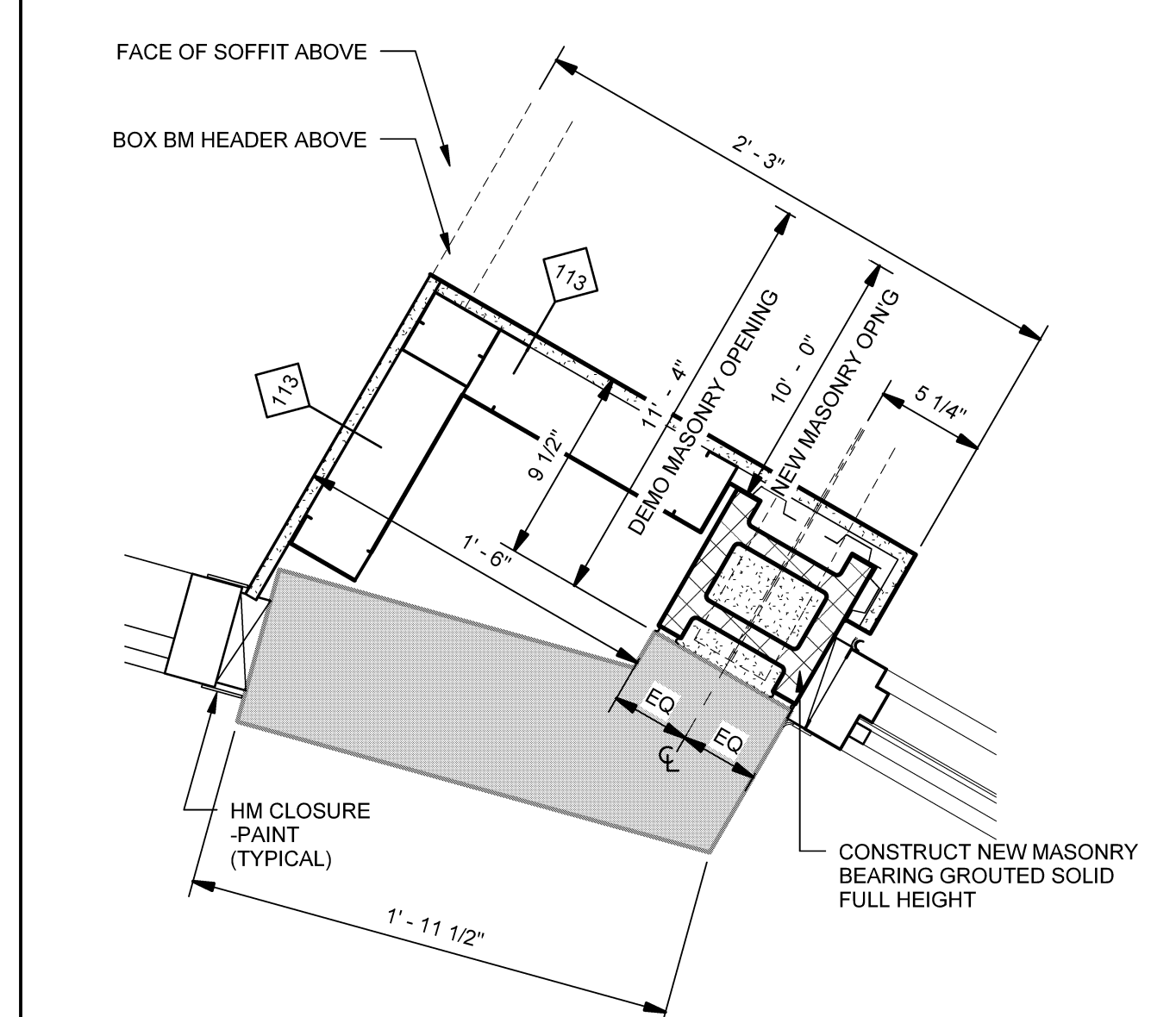
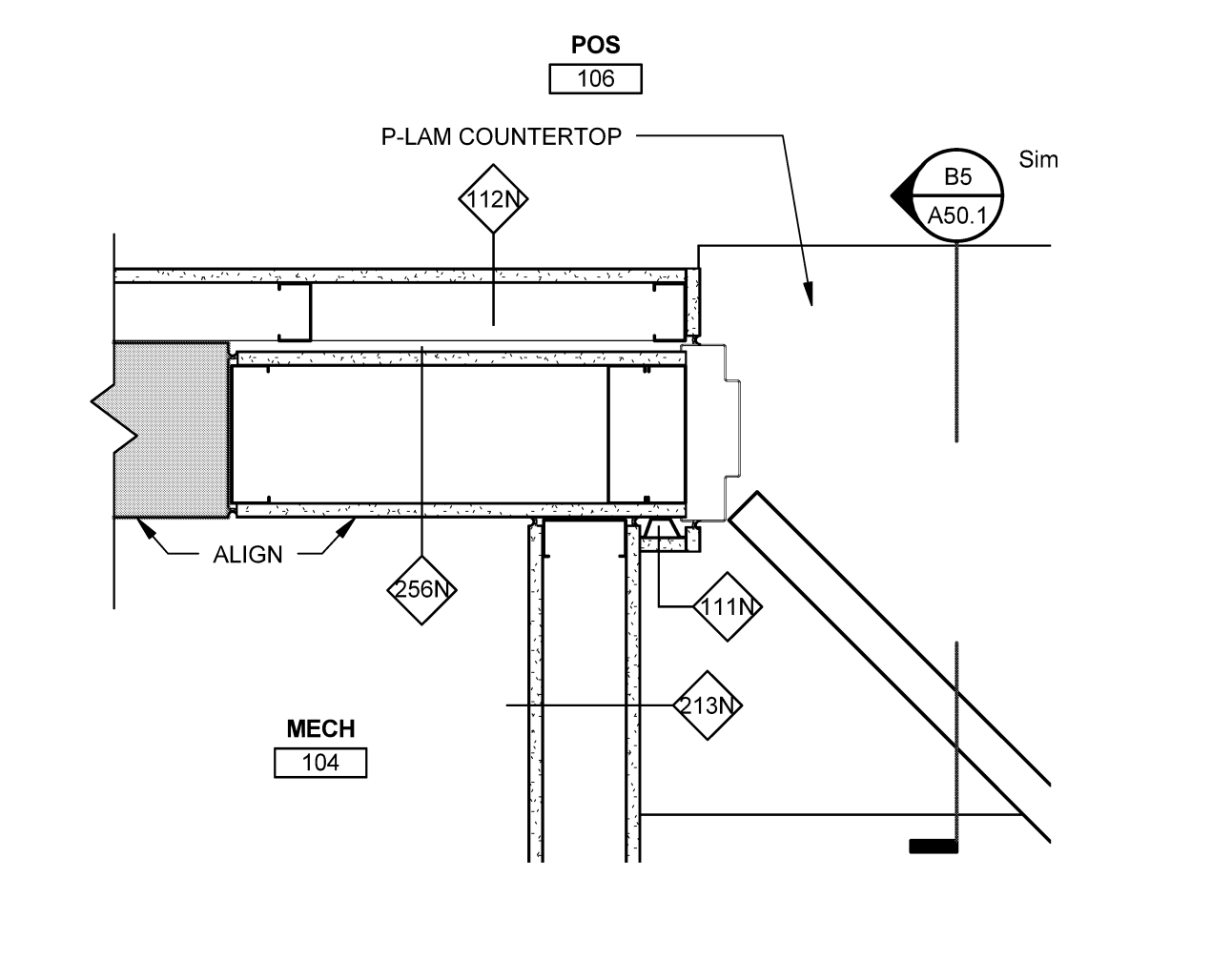
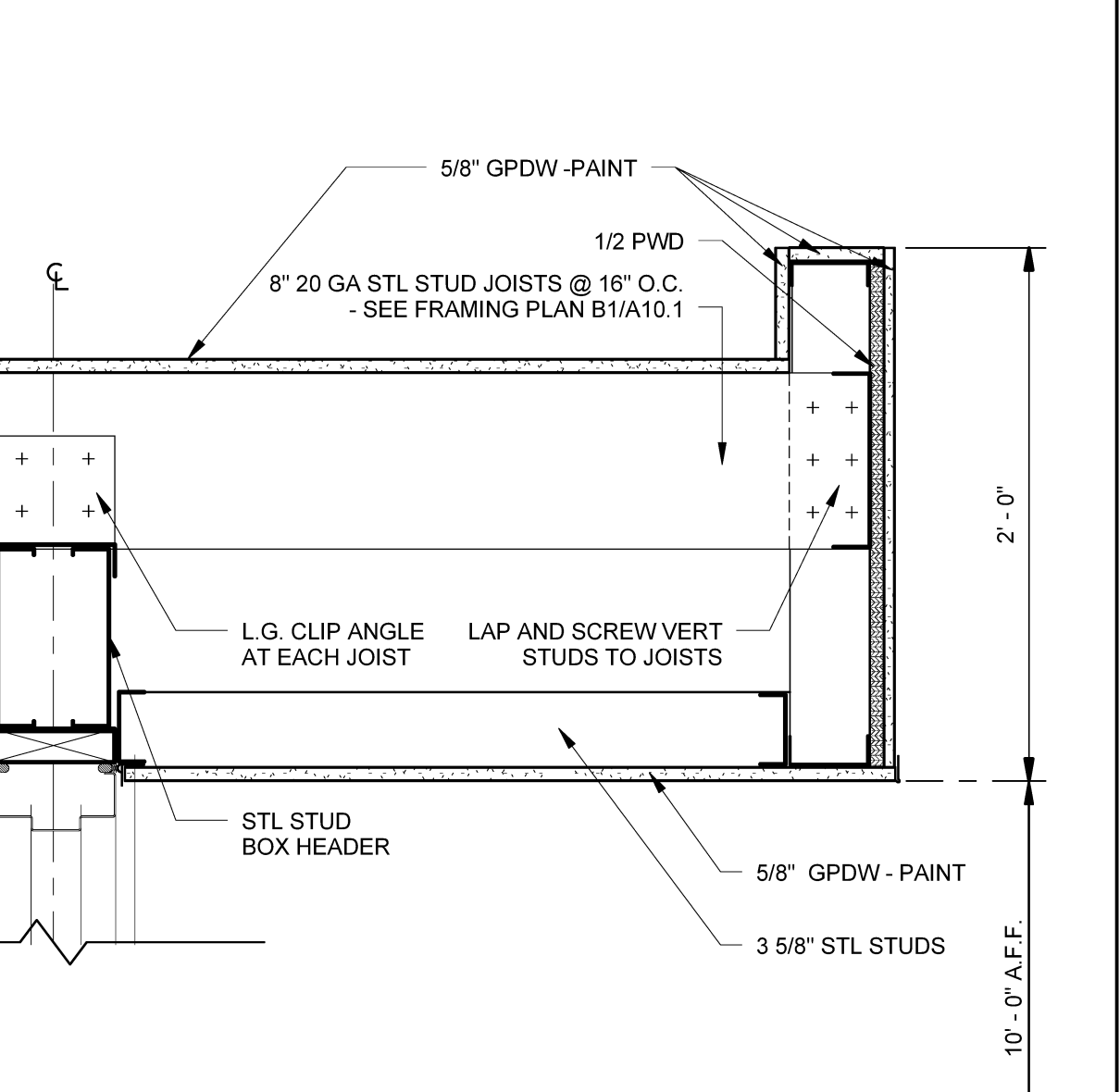
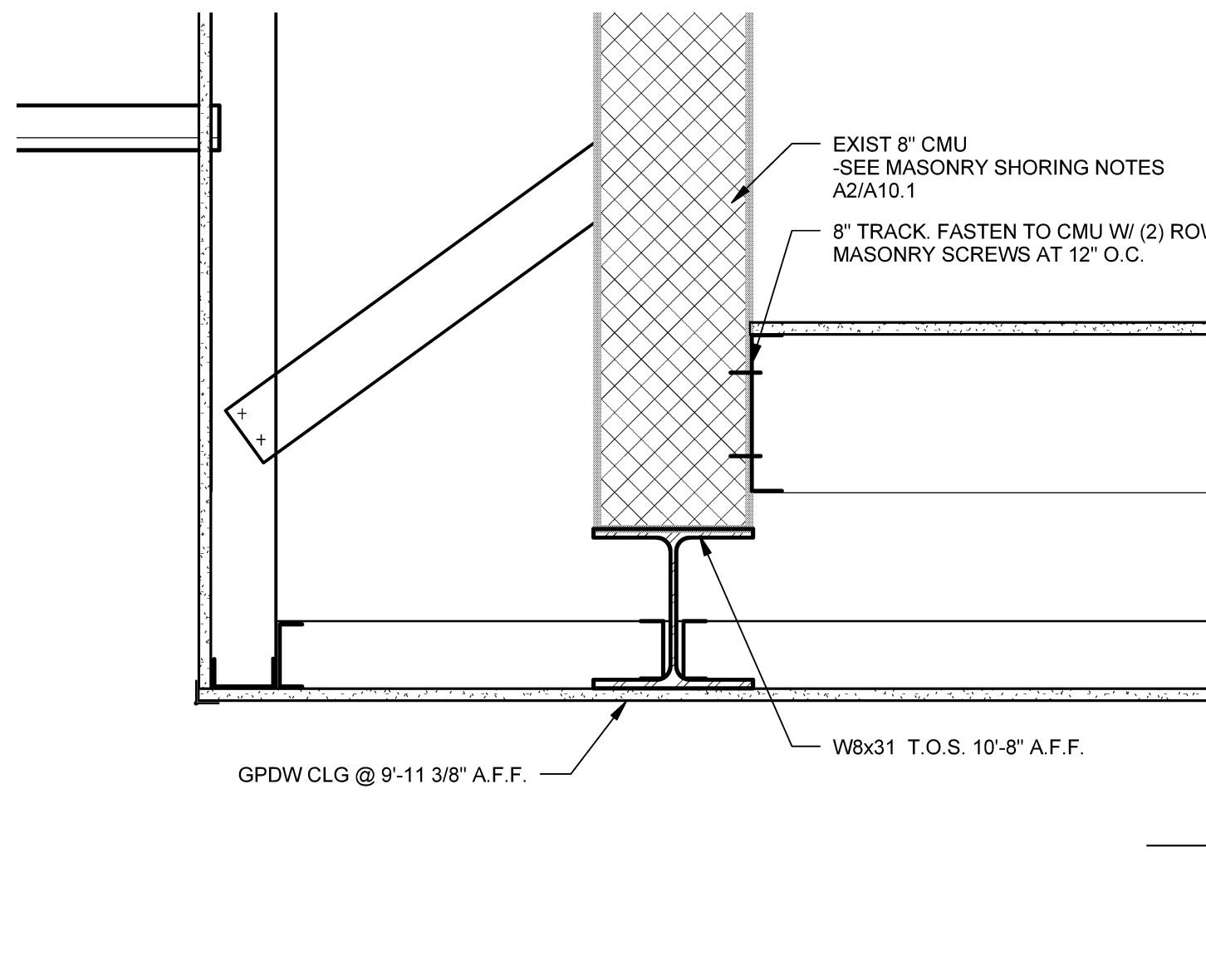
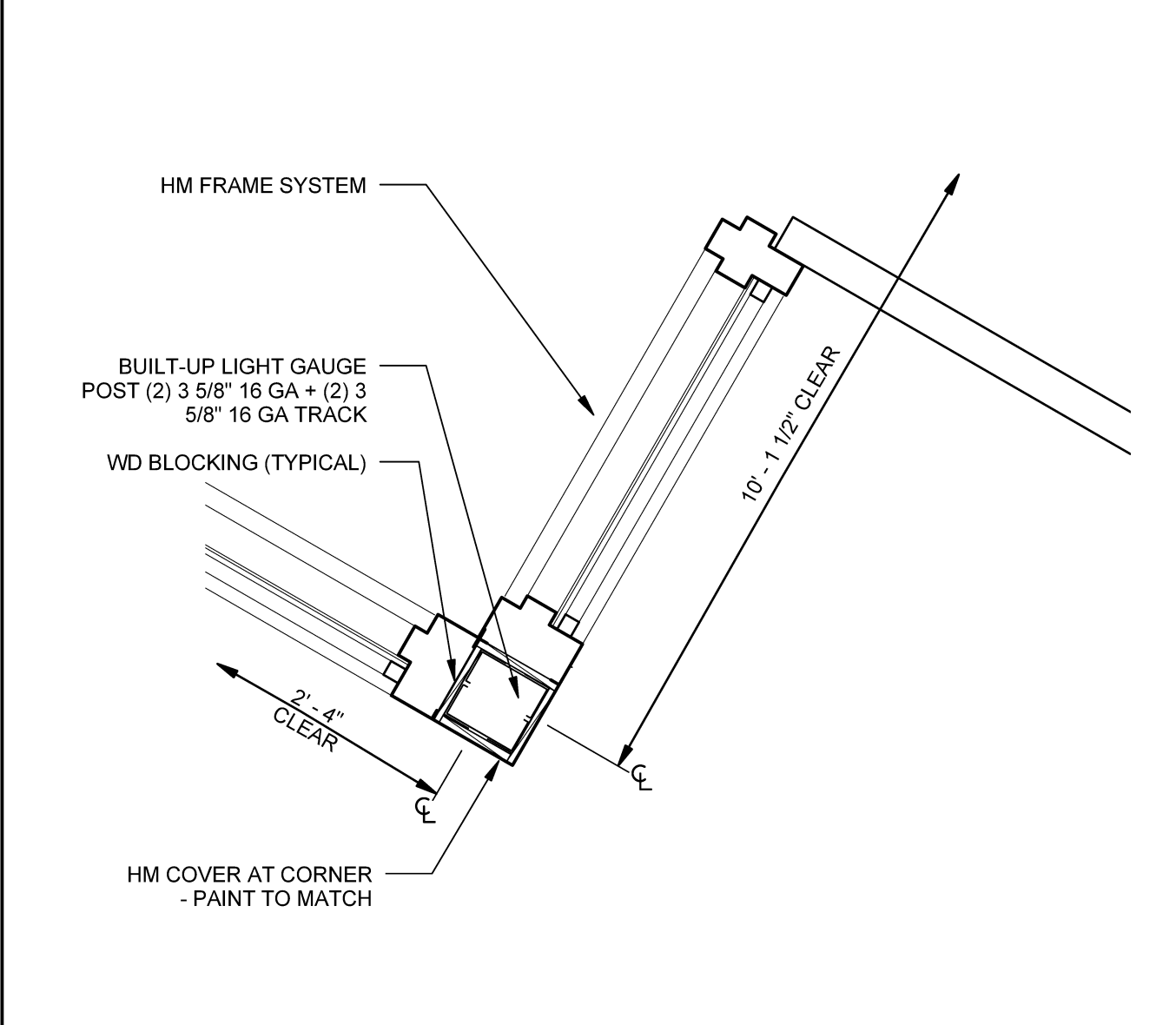
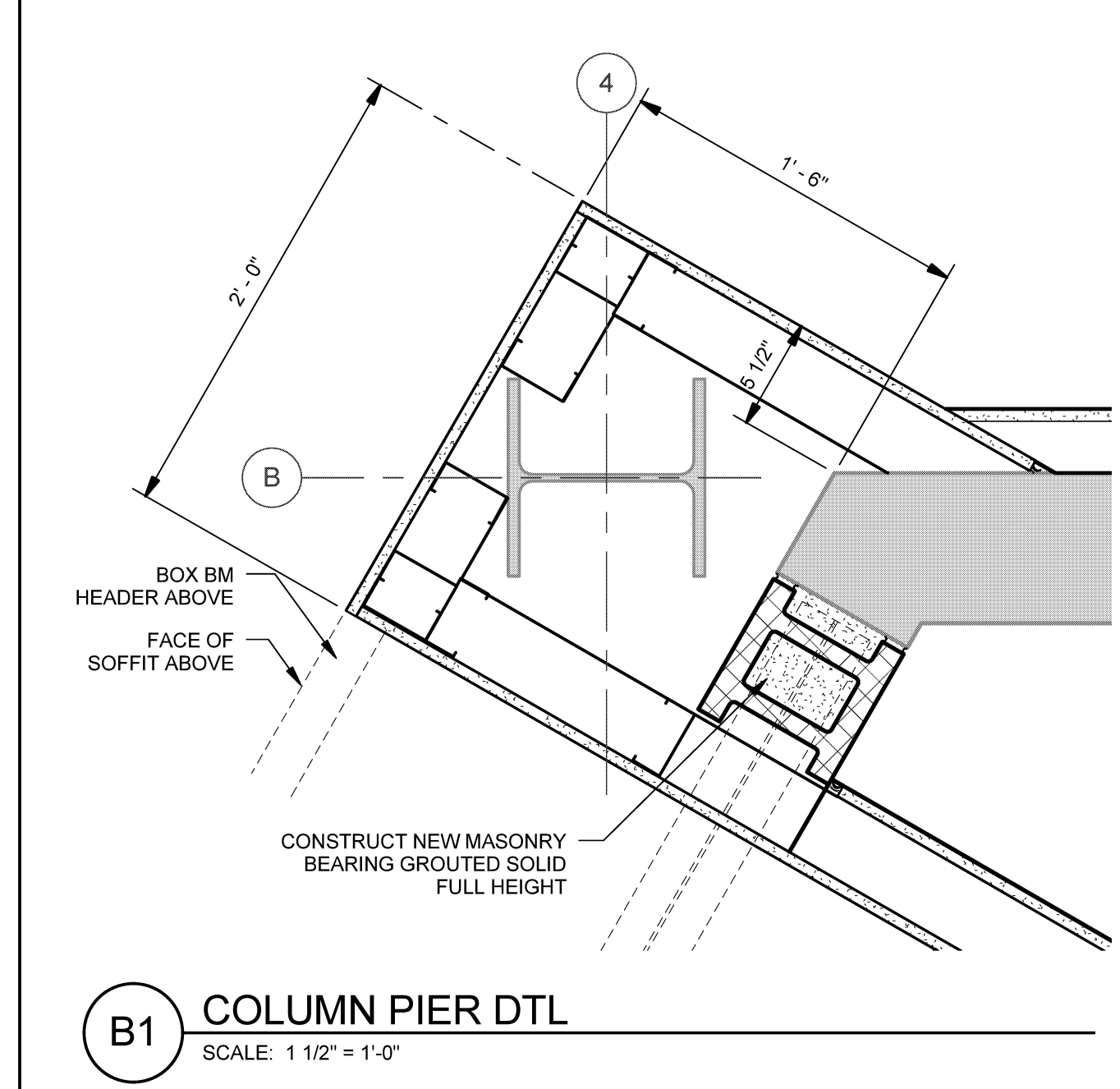
C4 ALTERNATE #2 STOREFRONT SILL / HEAD
SCALE: 1 1/2" = 1'-0"



C1A HM DOOR JAMB DETAIL
SCALE: 1 1/2" = 1'-0"



B5 SECTION AT BUYBACK WINDOW
SCALE: 1 1/2" = 1'-0"



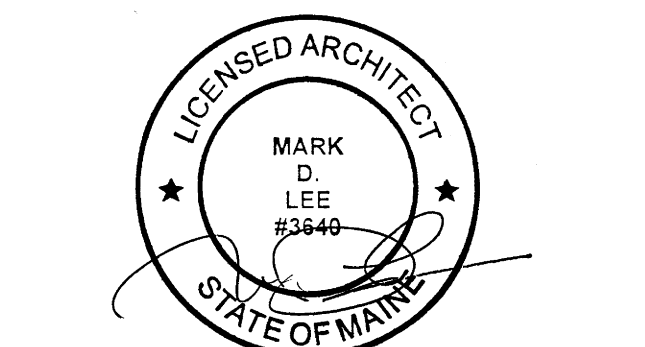
A2 HM JAMBS AT POST
SCALE: 1 1/2" = 1'-0"

A3 SECTION AT ENTRY SOFFIT
SCALE: 1 1/2" = 1'-0"

A1 STOREFRONT JAMB AT PIER
SCALE: 1 1/2" = 1'-0"

A5 JAMB DETAIL AT BUYBACK WINDOW
SCALE: 1 1/2" = 1'-0"

Mark	Date	Description
-	12-18-13	FINAL REVIEW
-	01-03-14	OWNER REVIEW
-	01-10-14	ISSUED FOR BID



Drawing Scales
As indicated

PA/PE: Designer © 2014 Harriman Associates
Drawn By: Author

SECTIONS, DETAILS AND SCHEDULES

A50.1