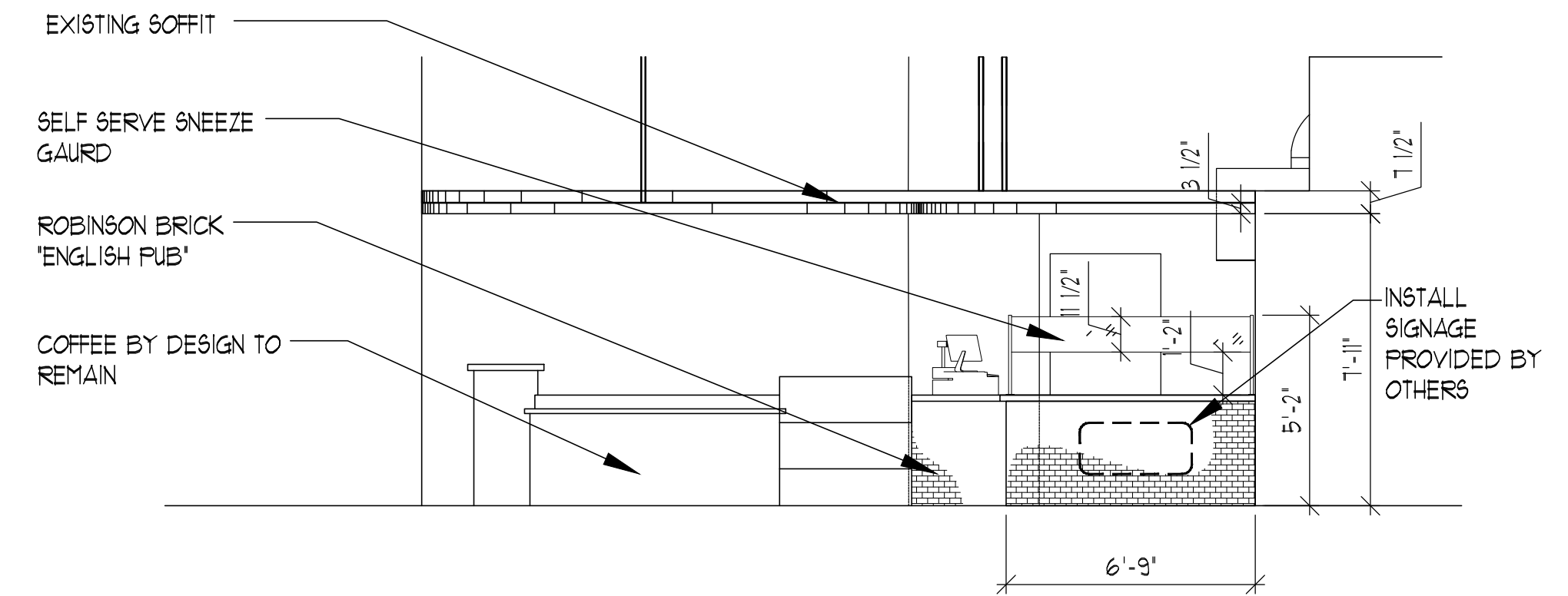


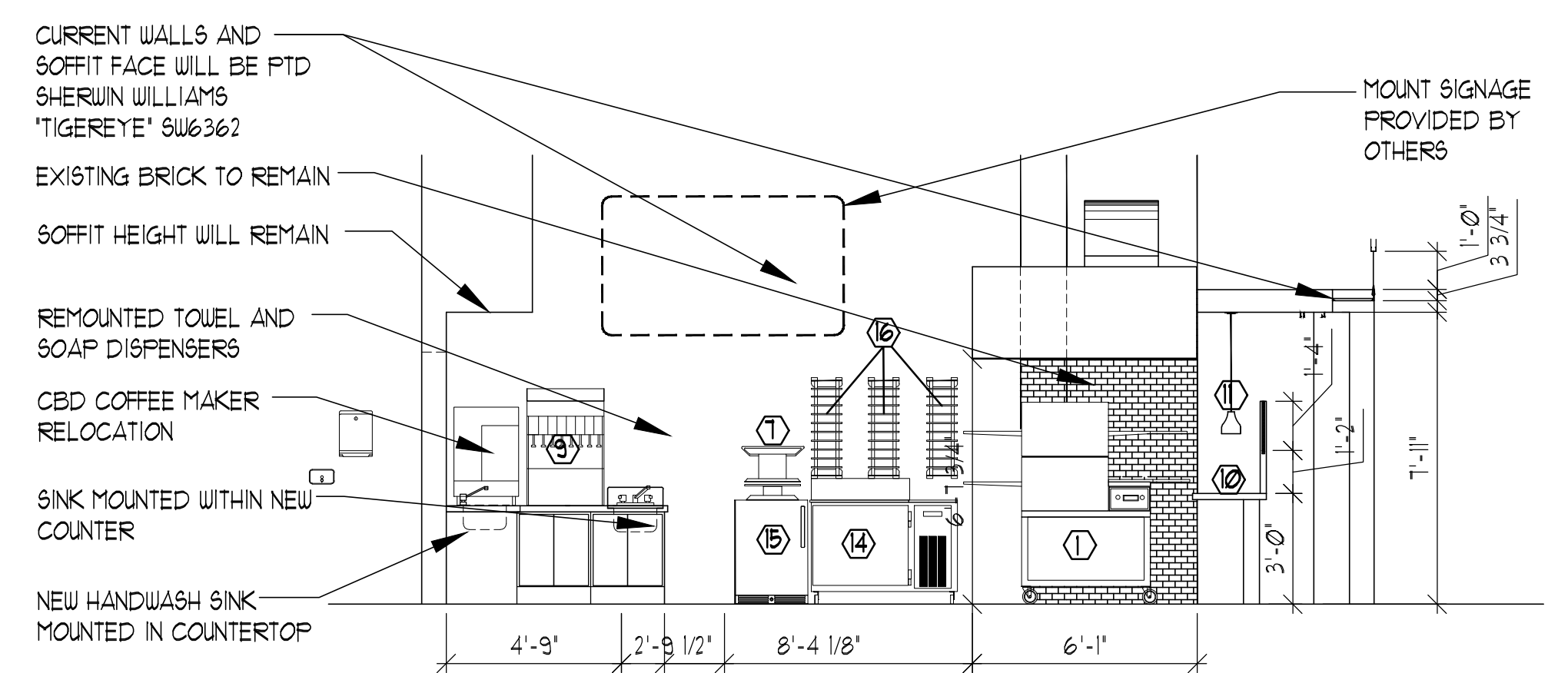
#	DATE	DESCRIPTION
REVISIONS		
	Date Issued	08/06/13
	Project Number	13302
	Drawing Scale	AS NOTED

SHEET NAME INTERIOR ELEVATIONS AND SECTION	
Drawn By	JCC
Checked By	JCC

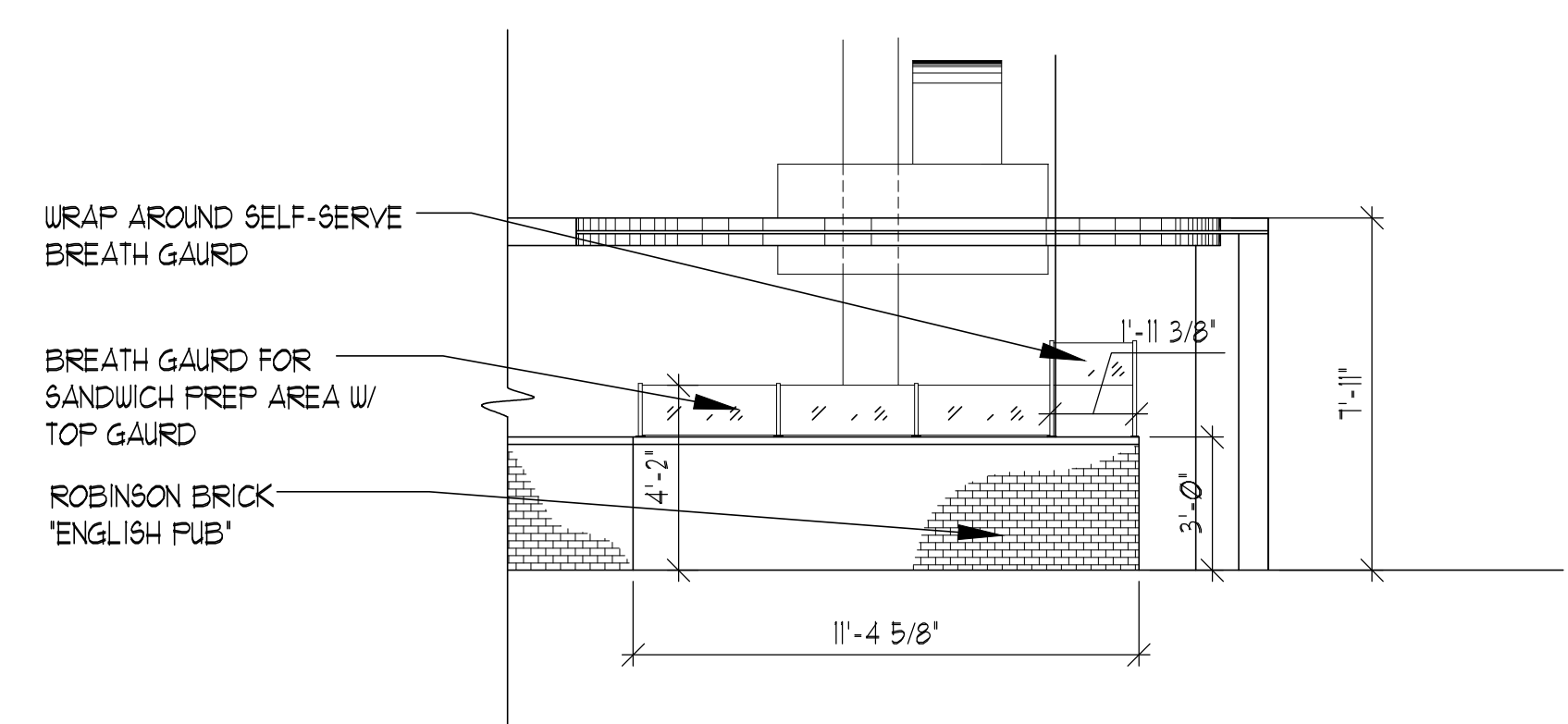
A3.1



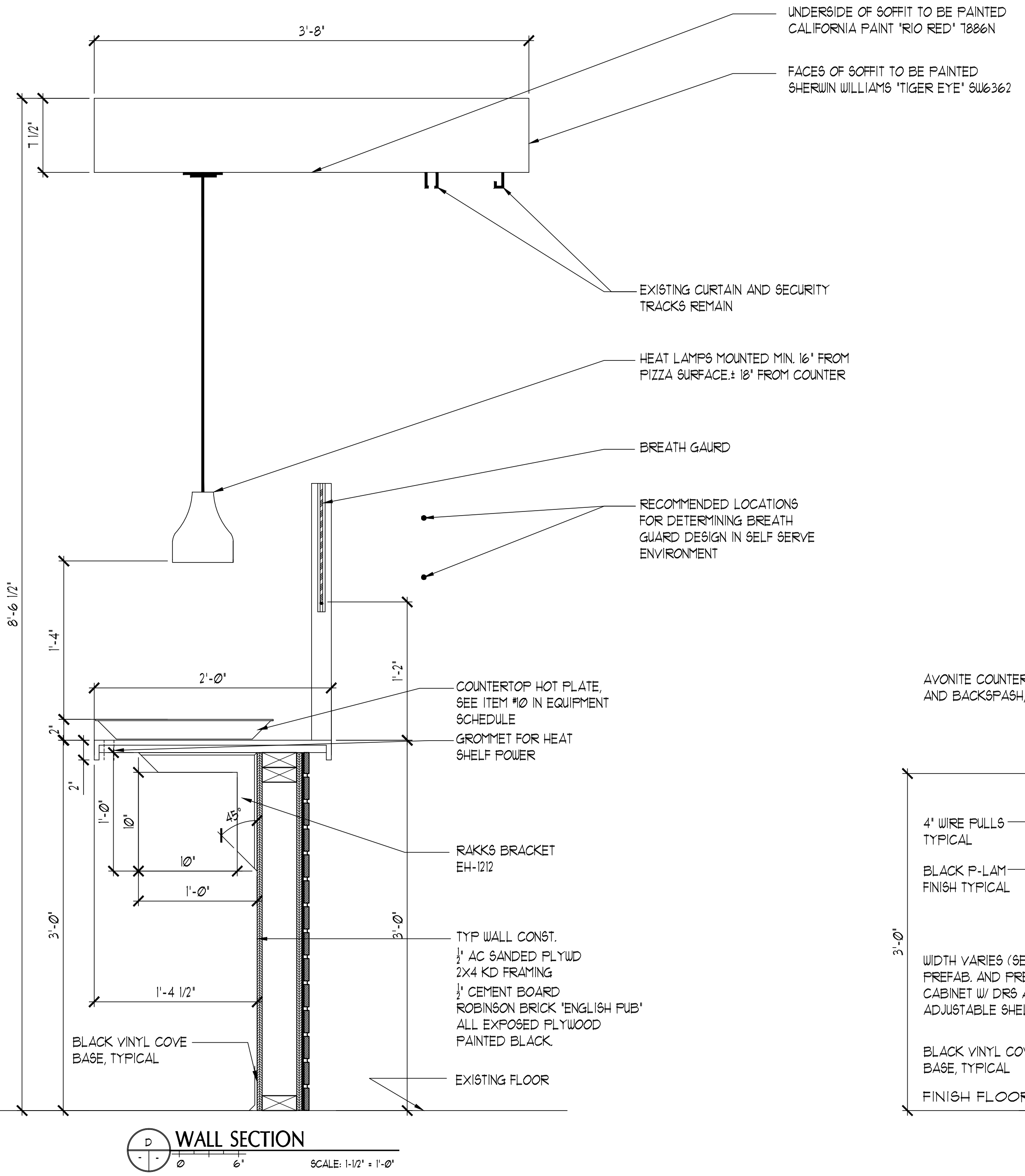
C INTERIOR ELEVATION
SCALE: 1/4" = 1'-0"



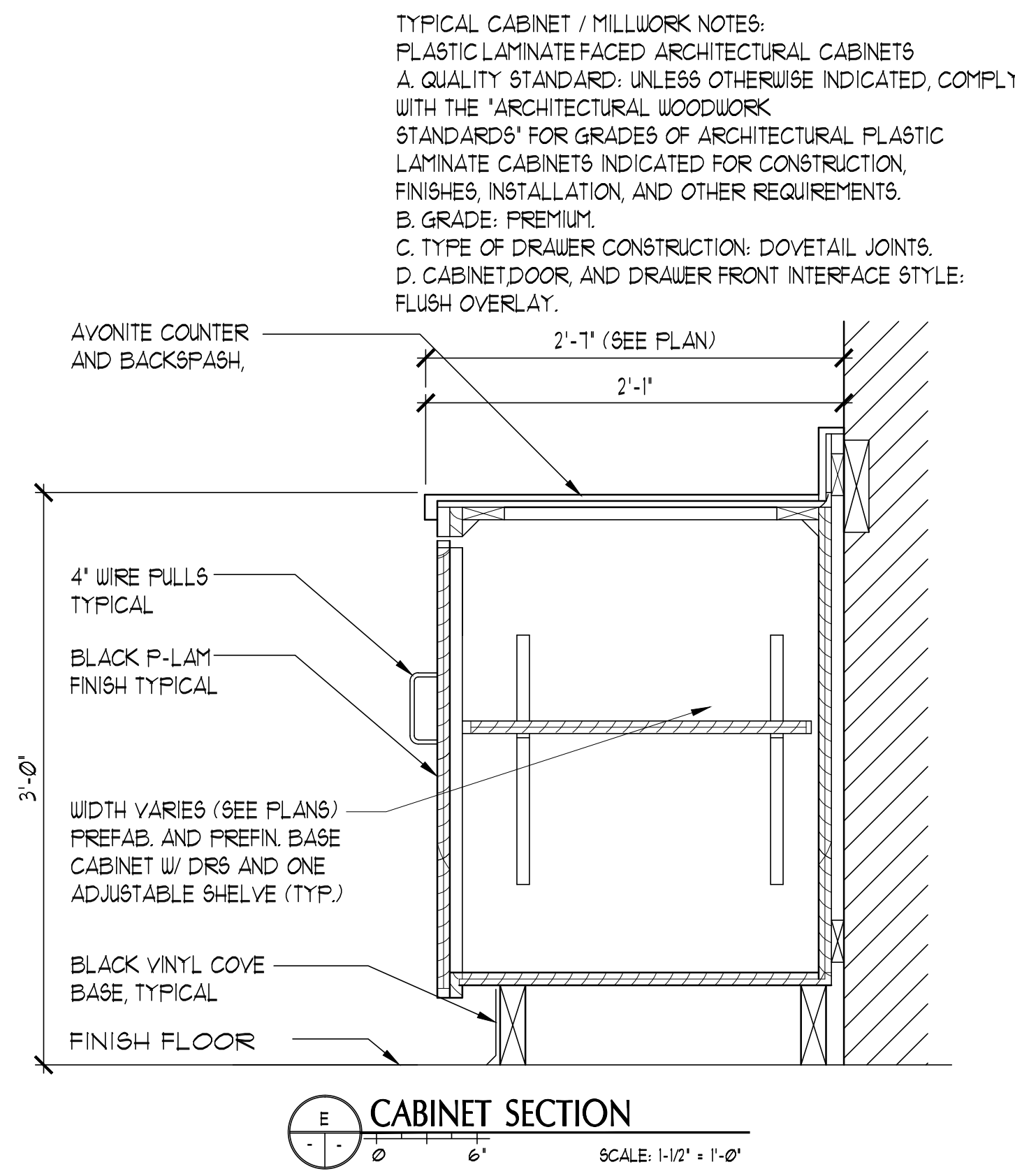
B INTERIOR ELEVATION
SCALE: 1/4" = 1'-0"



A INTERIOR ELEVATION
SCALE: 1/4" = 1'-0"



D WALL SECTION
SCALE: 1/16" = 1'-0"



E CABINET SECTION
SCALE: 1/16" = 1'-0"

TYPICAL CABINET / MILLWORK NOTES:
PLASTIC LAMINATE FACED ARCHITECTURAL CABINETS
A. QUALITY STANDARD: UNLESS OTHERWISE INDICATED, COMPLY WITH THE 'ARCHITECTURAL WOODWORK STANDARDS' FOR GRADES OF ARCHITECTURAL PLASTIC LAMINATE CABINETS INDICATED FOR CONSTRUCTION, FINISHES, INSTALLATION, AND OTHER REQUIREMENTS.
B. GRADE: PREMIUM.
C. TYPE OF DRAWER CONSTRUCTION: DOVETAIL JOINTS.
D. CABINET/DOOR AND DRAWER FRONT INTERFACE STYLE: FLUSH OVERLAY.

IF THIS SHEET IS NOT 24 X 36 IT IS A REDUCED SCALE PRINT - SCALE ACCORDINGLY

