



HARRIMAN

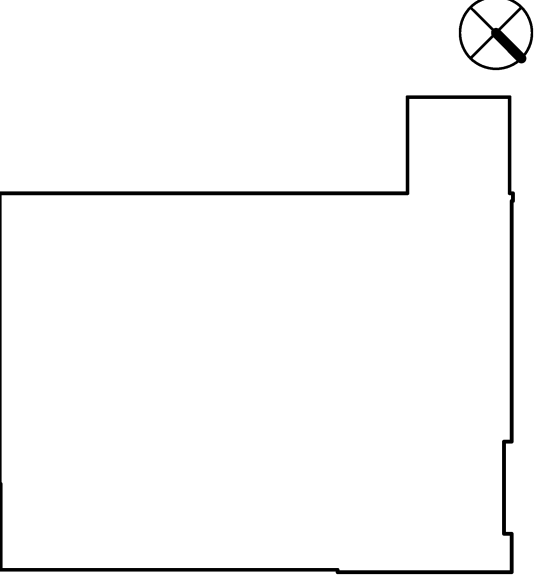
AUBURN PORTLAND MANCHESTER

UNIVERSITY OF SOUTHERN MAINE CENTRAL HEAT PLANT UPGRADES

PORTLAND, ME

Harriman Project No. 14411

Key Plan



BUILDING DESIGN CODES: AMERICANS WITH DISABILITIES ACT (ADA 2010) INTERNATIONAL ENERGY CONSERVATION CODE (2009) NFPA 101 LIFE SAFETY CODE (2009) INTERNATIONAL BUILDING CODE (2009) INTERNATIONAL MECHANICAL CODE (2009) ASHRAE / IES STANDARD 90.1 - 2007 NFPA 70 NATIONAL ELECTRIC CODE (2008) NFPA 13 STATE OF MAINE INTERNAL PLUMBING CODE (2009) CITY OF PORTLAND LAND USE CODE

OCCUPANCY CLASSIFICATION: NFPA: - INDUSTRIAL IBC: - UTILITY

CONSTRUCTION TYPE: NFPA: - TYPE II, 500 IBC: - TYPE II, B

NUMBER OF STORIES: ALLOWABLE: 2 STORIES (IBC TABLE 503) ACTUAL: 1 STORY + MEZZANINE

BUILDING HEIGHT: ALLOWABLE: 55' (IBC TABLE 503), 65' (PORTLAND LUC 14-185) ACTUAL: 25'-0"

BUILDING AREA: ALLOWABLE: 13,600 SF (8,500 + 5,100 FRONTAGE INCREASE, IBC 506) ACTUAL: 3,900

FIRE SUPPRESSION: NONE

OCCUPANT LOADS: BUSINESS: 100 SF GROSS UTILITY: 300 SF GROSS

MEANS OF EGRESS: MAX TRAVEL DISTANCE: NFPA: 200' IBC: 300' (IBC 1016.1) COMMON PATH OF TRAVEL: NFPA: 50' IBC: 75' (IBC 1014.3) DEAD END CORRIDOR: NFPA: 50' IBC: 20' (IBC 1018.4)

SEPERATION REQUIREMENTS: --- ■ --- DENOTES 1 HOUR FIRE RATED WALL ASSEMBLY --- ■ --- DENOTES 2 HOUR FIRE RATED WALL ASSEMBLY - - - ■ - - - DENOTES SMOKE PARTITION

CODE PLAN LEGEND: EXIT SIGN, HORN / STROBE, STROBE, EMERGENCY LIGHT (SEE E10.1 FOR EMERGENCY BALLAST IN CEILING FIXTURES), KNOX BOX, FIRE ALARM CONTROL PANEL, SMOKE DETECTOR, HEAT DETECTOR, FIRE ALARM PULL STATION, FIRE EXTINGUISHER

Issues and Revisions table with columns: Mark, Date, Description

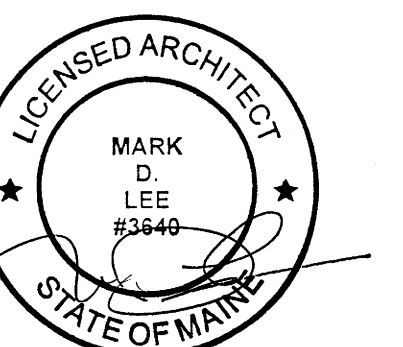
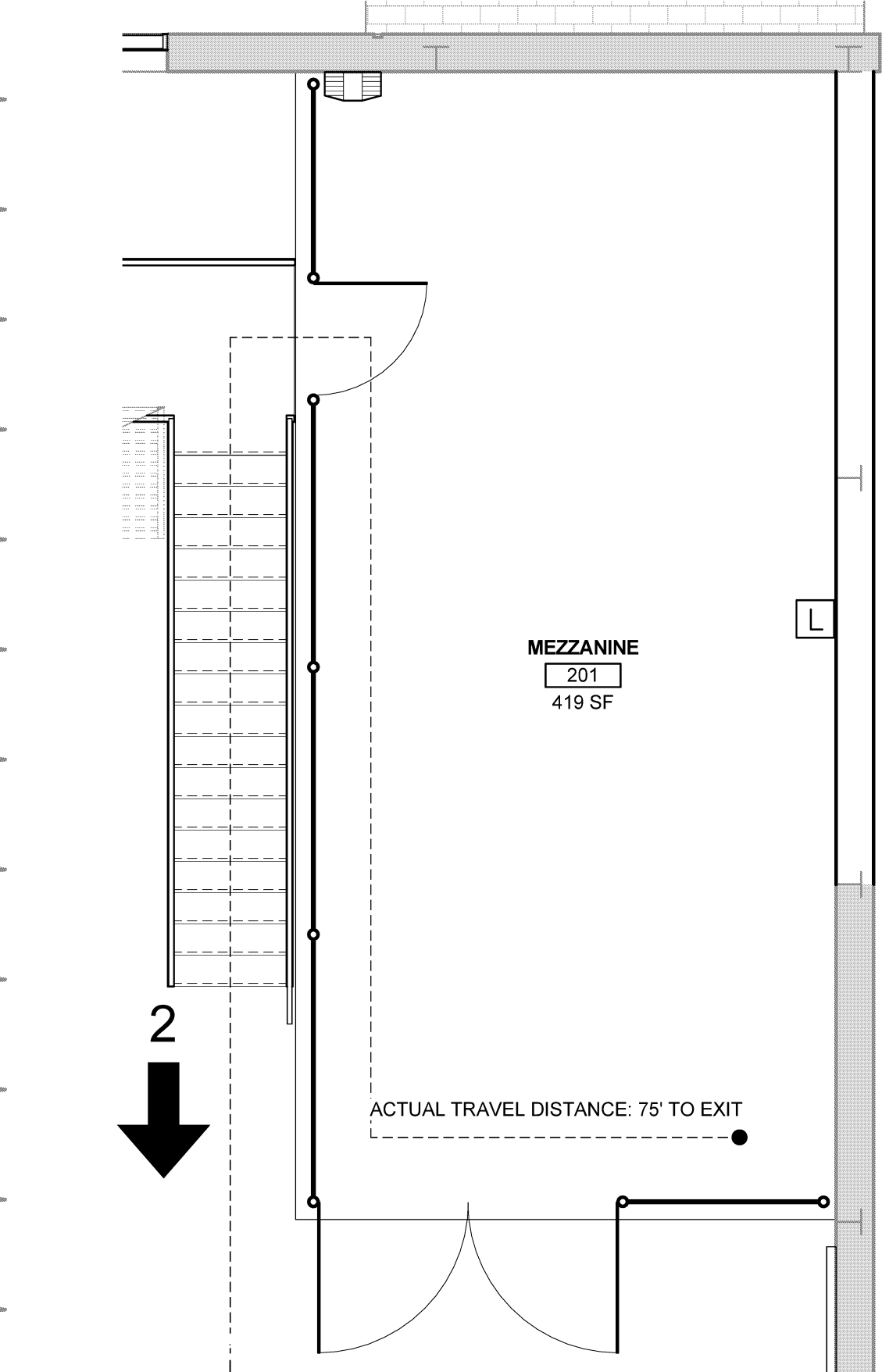
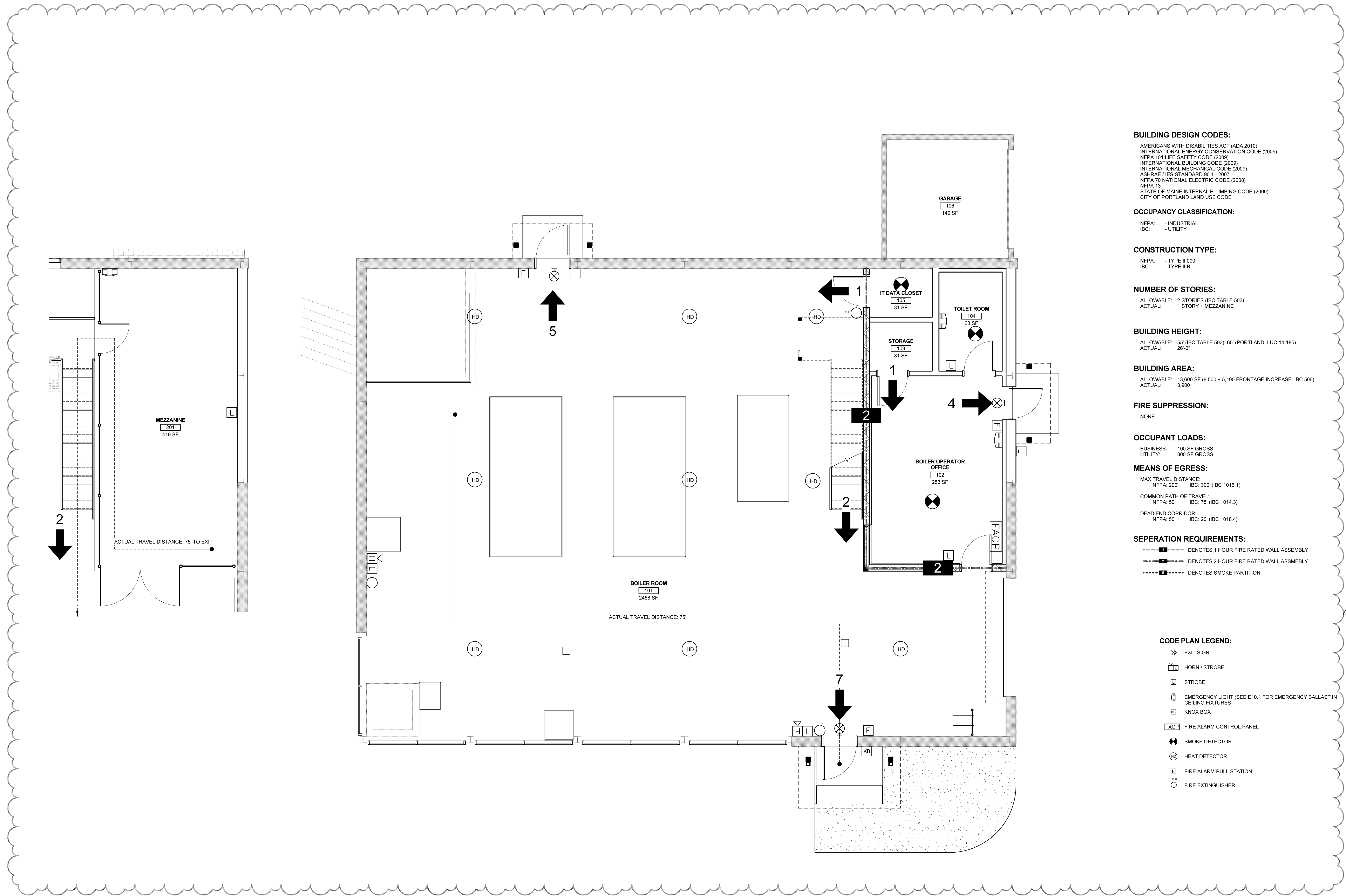


Table with columns: Drawing Scales, PA/PE, Designer, Drawn By, Author, © 2014 Harriman Associates

CODE PLAN

A01.1



2 MEZZANINE CODE PLAN SCALE: 1/4" = 1'-0"

1 FIRST FLOOR CODE PLAN SCALE: 1/4" = 1'-0"

Plot Date: 2/10/2015 2:31:14 PM