

HARRIMAN

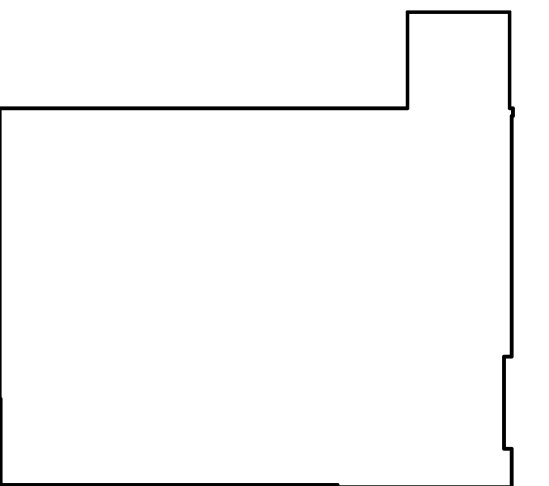
AUBURN PORTLAND MANCHESTER

UNIVERSITY OF
SOUTHERN MAINE
CENTRAL HEAT PLANT
UPGRADES

PORTLAND, ME

Harriman Project No. 14411

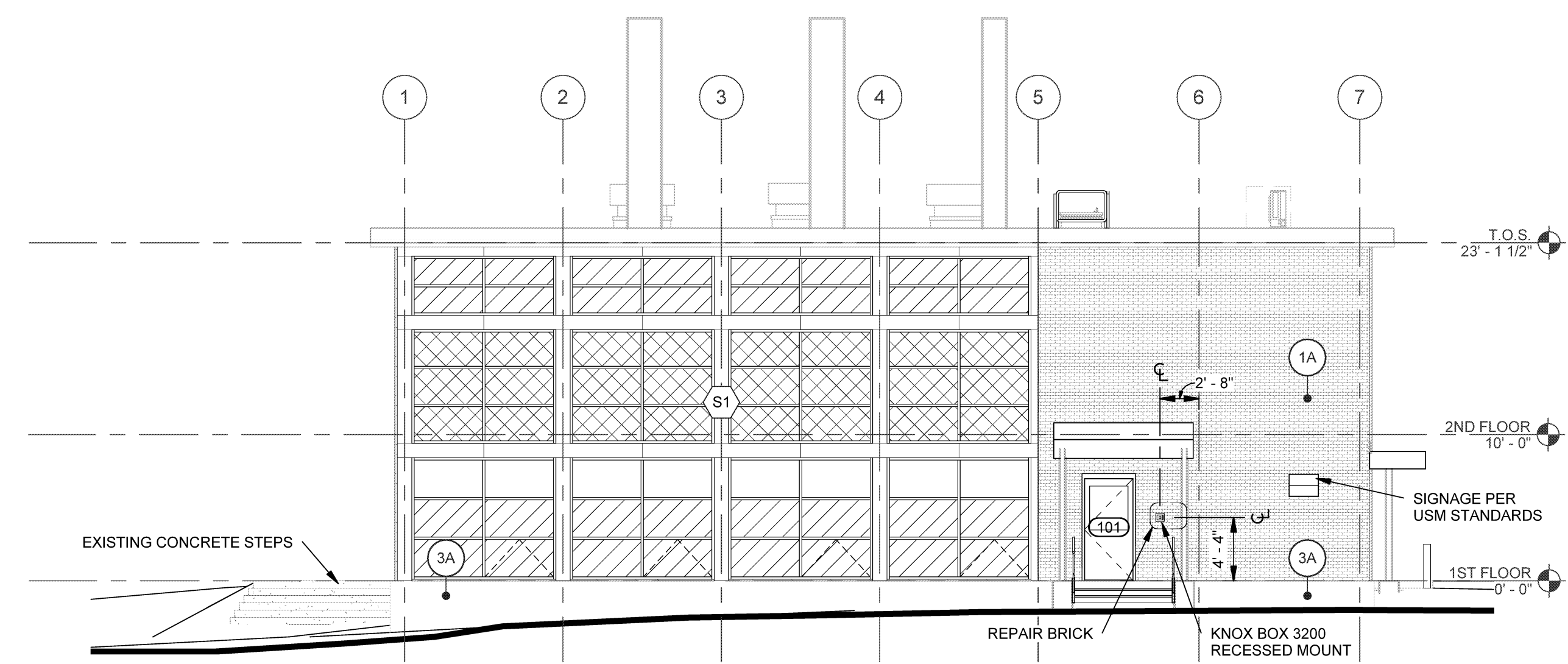
Key Plan Proj North



GENERAL NOTES

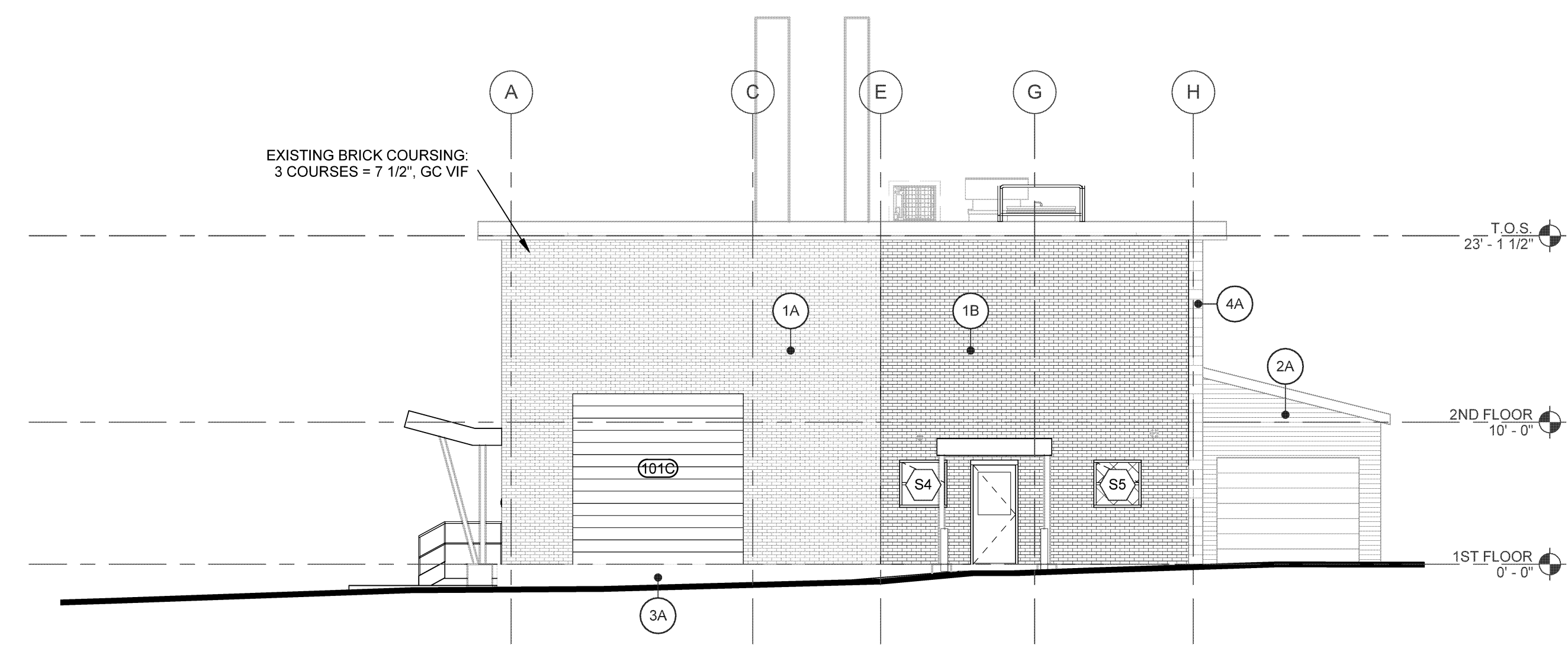
- ALL CRACKED OR BROKEN BRICK OR BLOCK TO BE REPLACED IN ALL LOCATIONS. IF CIRCUMSTANCES MAKE REMOVAL DETRIMENTAL TO ADJACENT AREAS, DISCUSS WITH ARCHITECT BEFORE PROCEEDING.
- REFER TO MATERIALS KEY FOR REPOINTING AND REPAINTING APPLICATIONS.

MATERIALS KEY	
MAT CODE	DESCRIPTION
1A	EXISTING BRICK VENEER - REPOINT
1B	NEW BRICK VENEER - TO MATCH EXISTING
2A	EXISTING VINYL SIDING
3A	EXISTING FOUNDATION WALL - ADD CEMENTITIOUS PARGE COAT
4A	EXISTING CMU BLOCK VENEER - REPOINT AND REPAINT
5A	NEW CMU BLOCK VENEER - TOOTHED-IN TO MATCH EXISTING



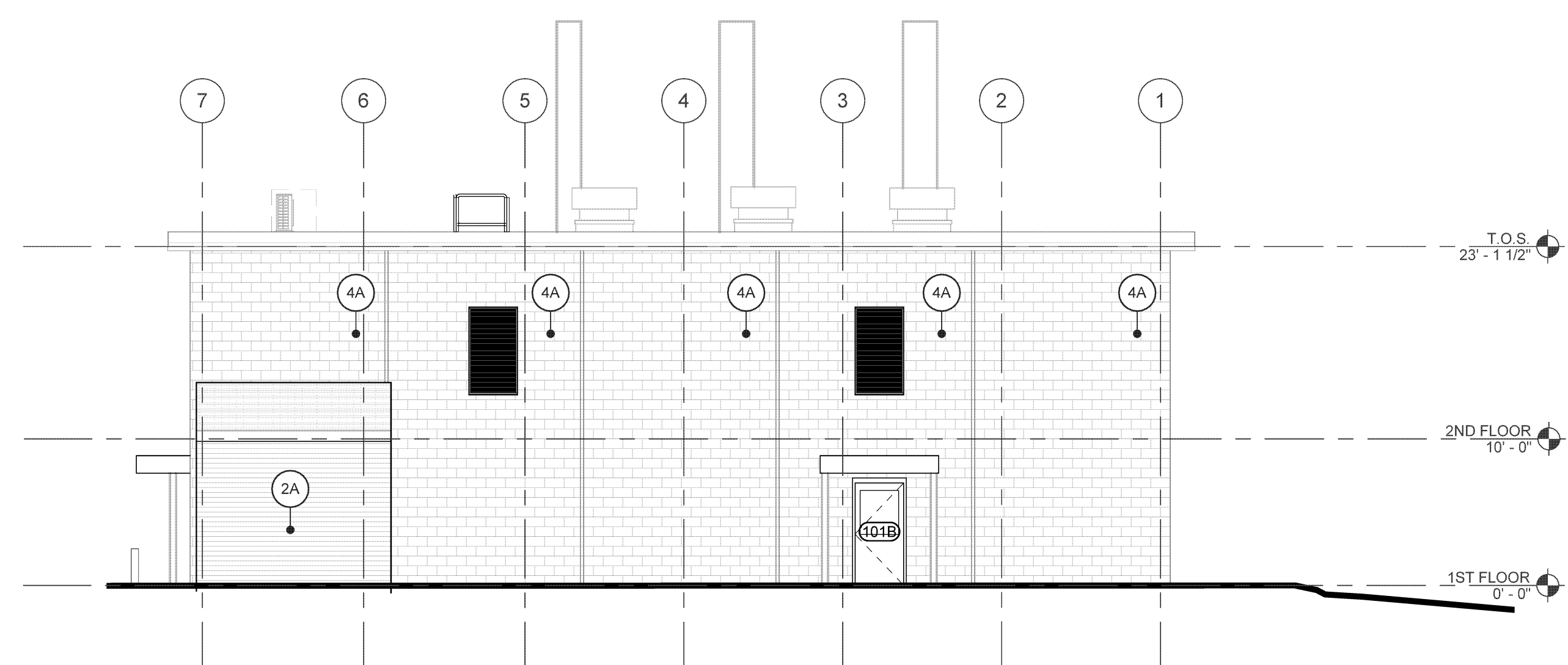
C1 NORTHEAST ELEVATION

SCALE: 1/8" = 1'-0"



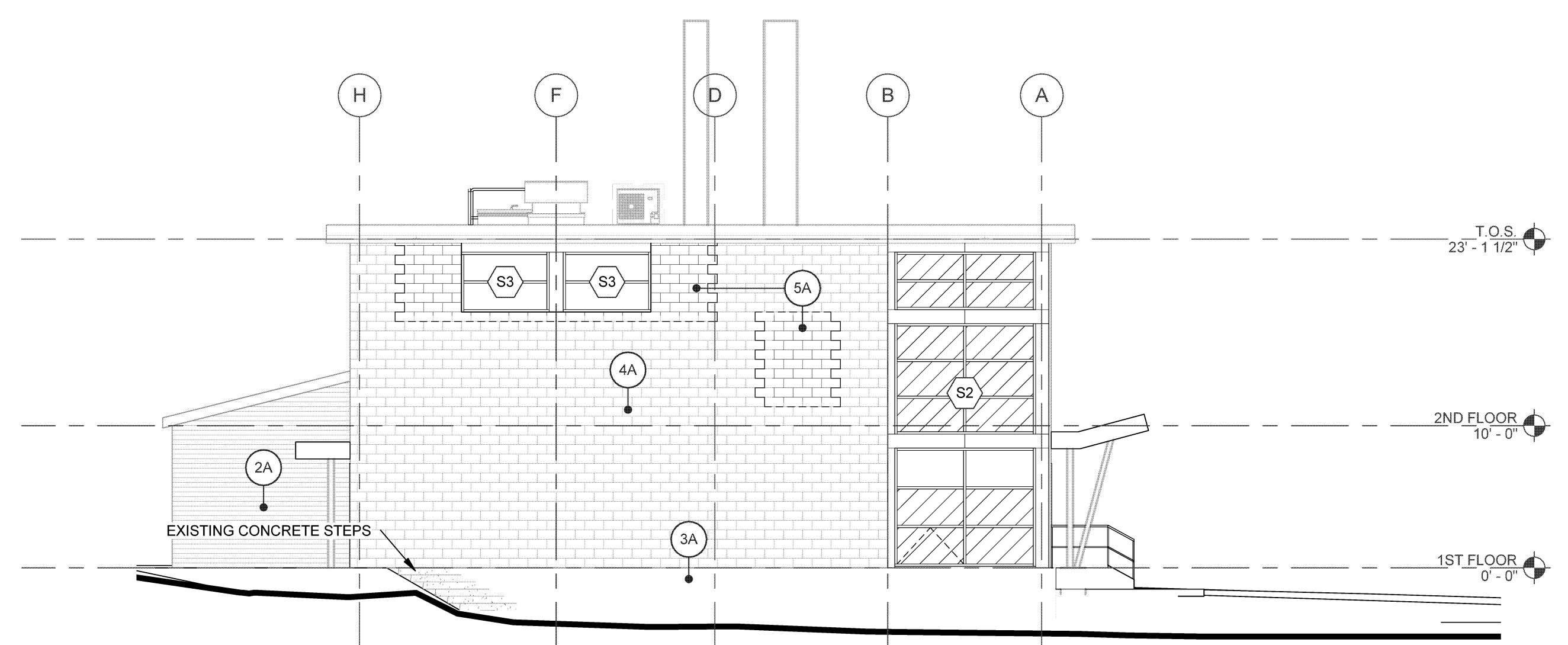
2 NORTHWEST ELEVATION

SCALE: 1/8" = 1'-0"



3 SOUTHWEST ELEVATION

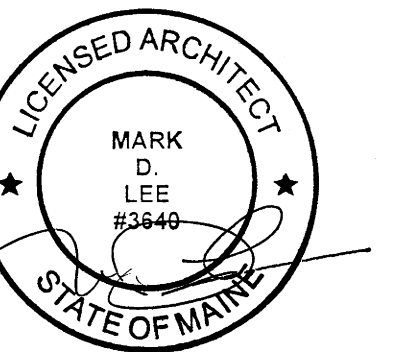
SCALE: 1/8" = 1'-0"



4 SOUTHEAST ELEVATION

SCALE: 1/8" = 1'-0"

Issues and Revisions	
Mark	Date Description
	08-25-14 REVISED SCHEMATIC DESIGN
	09-05-14 DESIGN DEVELOPMENT
	09-19-14 PROGRESS REVIEW
	09-26-14 PROGRESS REVIEW
	10-03-14 PROGRESS REVIEW
	10-10-14 FINAL REVIEW
	10-23-14 100% REVIEW
	10-31-14 ISSUED FOR BID



Drawing Scales	
As indicated	
PA/PE: Designer	© 2014 Harriman Associates
Drawn By: Author	

EXTERIOR ELEVATIONS

A20.1