



HARRIMAN

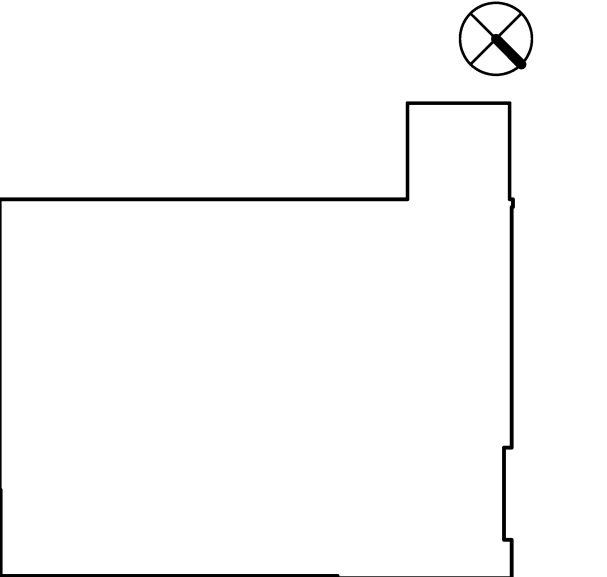
AUBURN PORTLAND MANCHESTER

UNIVERSITY OF SOUTHERN MAINE CENTRAL HEAT PLANT UPGRADES

PORTLAND, ME

Harriman Project No. 14411

Key Plan



BUILDING DESIGN CODES: AMERICANS WITH DISABILITIES ACT (ADA 2010) INTERNATIONAL ENERGY CONSERVATION CODE (2009) NFPA 101 LIFE SAFETY CODE (2009) INTERNATIONAL BUILDING CODE (2009) INTERNATIONAL MECHANICAL CODE (2009) ASHRAE / IES STANDARD 90.1 - 2007 NFPA 70 NATIONAL ELECTRIC CODE (2008) NFPA 13 STATE OF MAINE INTERNAL PLUMBING CODE (2009)

OCCUPANCY CLASSIFICATION: NFPA: - INDUSTRIAL IBC: - UTILITY

CONSTRUCTION TYPE: NFPA: - TYPE II, G00 IBC: - TYPE II, G

NUMBER OF STORIES: ALLOWABLE: (4) STORIES (5) ACTUAL: (1) STORY + MEZZANINE

BUILDING HEIGHT: ALLOWABLE: 65'-0" (85'-0") ACTUAL: 28'-0"

BUILDING AREA: ALLOWABLE: (IBC) 19,000GSF ACTUAL: 3,900GSF

FIRE SUPPRESSION: NONE

OCCUPANT LOADS: BUSINESS: 100 SF GROSS UTILITY: 300 SF GROSS

MEANS OF EGRESS: MAX TRAVEL DISTANCE: NFPA: 200' IBC: 300' COMMON PATH OF TRAVEL: NFPA: 50' IBC: 75' DEAD END CORRIDOR: NFPA: 50' IBC: 20'

SEPERATION REQUIREMENTS: --- ■ --- DENOTES 1 HOUR FIRE RATED WALL ASSEMBLY --- ■ --- DENOTES 2 HOUR FIRE RATED WALL ASSEMBLY - - - - - DENOTES SMOKE PARTITION

Issues and Revisions table with columns for Mark, Date, and Description.

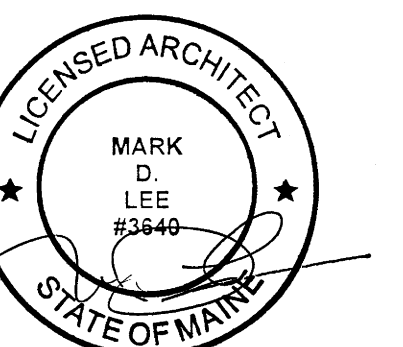
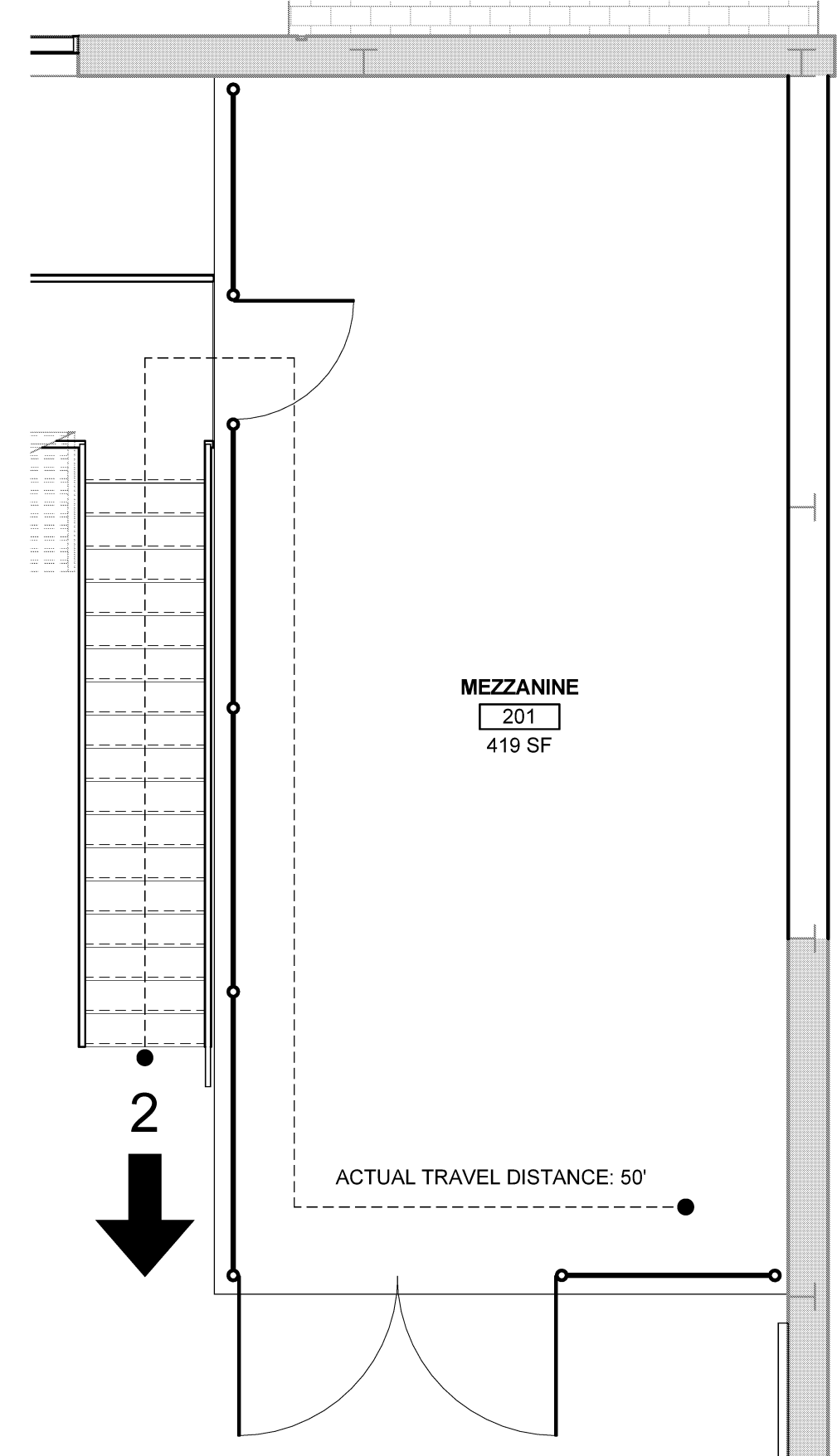
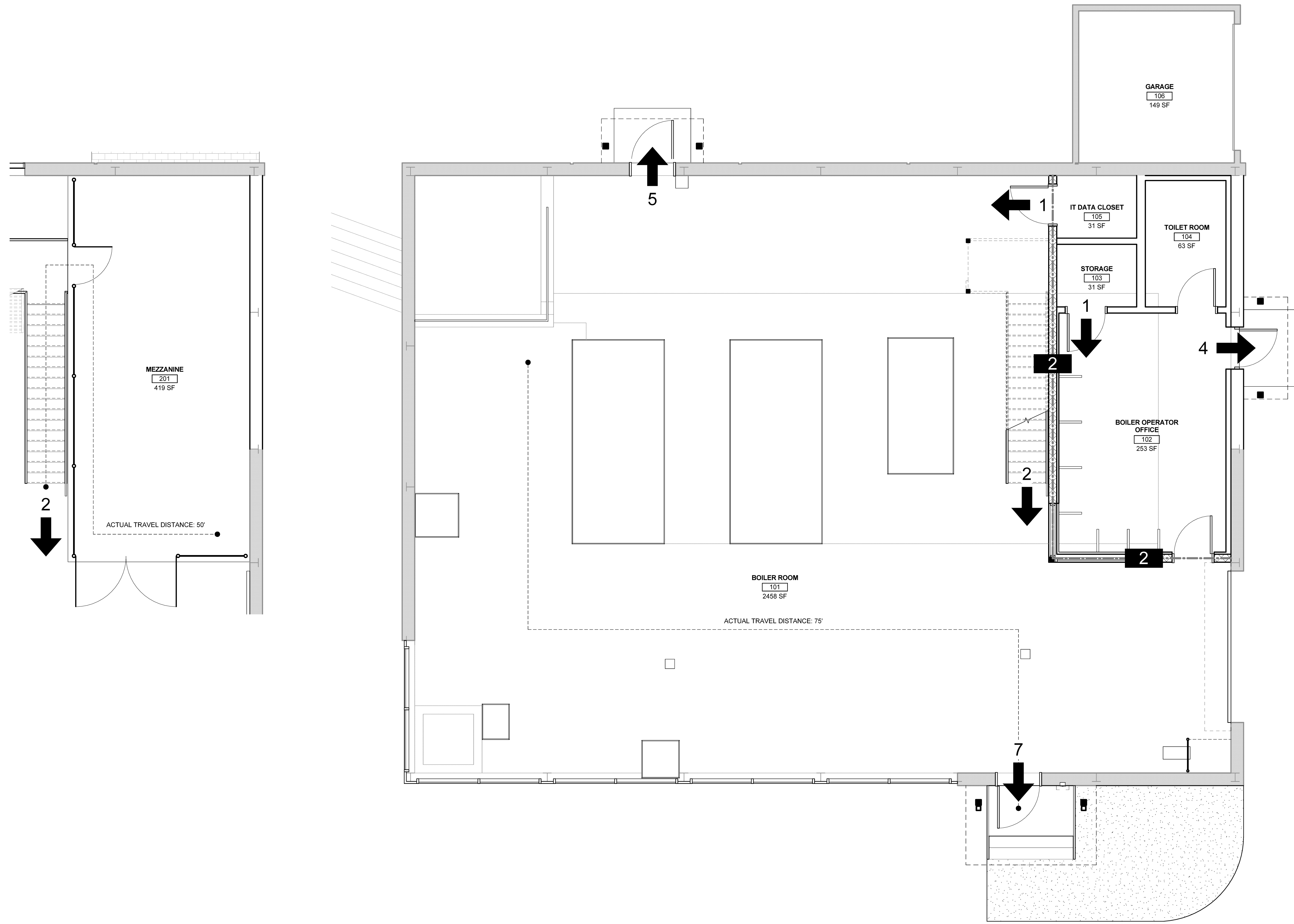


Table for Drawing Scales, PA/PE, Designer, and Author information.

CODE PLAN

A01.1



2 MEZZANINE CODE PLAN SCALE: 1/4" = 1'-0"

1 FIRST FLOOR CODE PLAN SCALE: 1/4" = 1'-0"