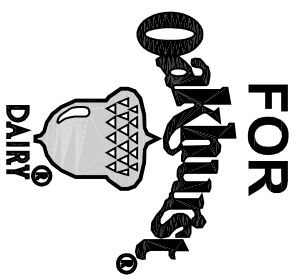
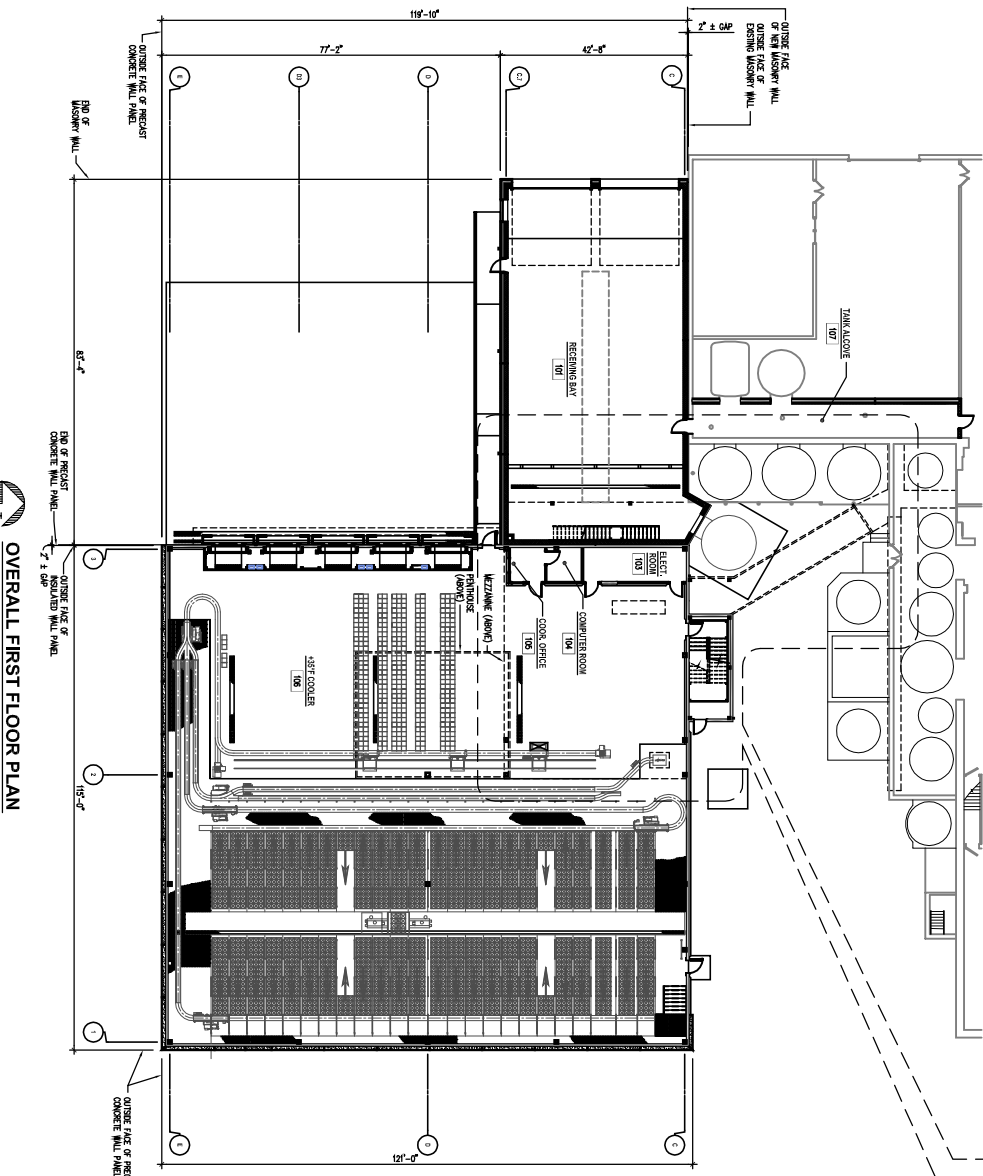


DAIRY DISTRIBUTION CENTER

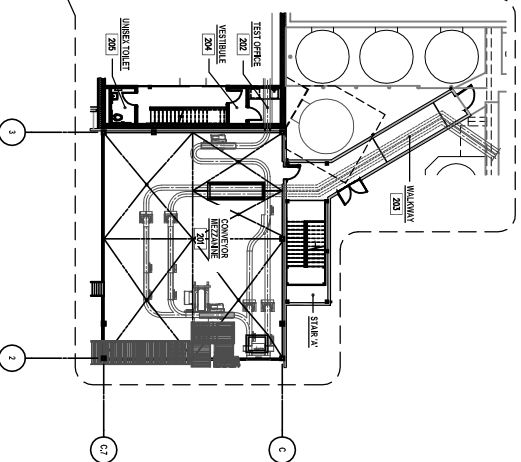


SYMBOLS LEGEND

○ DOOR NUMBER	○ DETAIL LETTER
○ WINDOW OR LOUVER NUMBER	○ SECTION NUMBER WHERE DETAIL IS SHOWN
○ WALL TYPE	○ ROOM NUMBER WHERE SECTION IS SHOWN
○ ROOM NAME AND NUMBER	○ ENLARGED PLAN
○ EMPTY CASE WASHSTORAGE	○ BALANCED PLAN NUMBER
○ ALT	○ DRAWING NUMBER WHERE BALANCED PLAN IS LOCATED
○ SPOT ELEVATION	○ SECTION NUMBER WHERE SECTION IS SHOWN
○ BUILDING ELEVATION	○ DETAIL LETTER
	○ DRAWING NUMBER WHERE DETAIL IS SHOWN
	○ CROSSING OR COLLISION



OVERALL FIRST FLOOR PLAN
SCALE: 1/8" = 1'-0"



OVERALL MEZZANINE FLOOR PLAN
SCALE: 1/8" = 1'-0"

STATE CODE INFORMATION (OAKHURST DAIRY)

BUILDING CODE OF PORTLAND MAINE
BOCA NATIONAL BUILDING CODE 1999

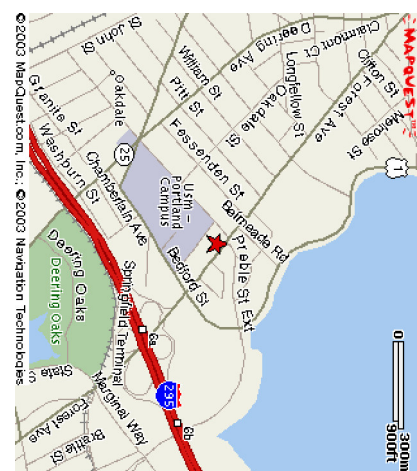
USE GROUP:	B-3,1	USE-AGRICULTURE STRUCTURE
UNIFORMED USE:	U-3	INDUSTRIAL
CONSTRUCTION CATEGORY:	TYPE III-A	NON-HIGHLY FLAME RESISTANT
FOUNDATION:	TYPE 1	CONCRETE
APPLICABLE STRUCTURAL SYSTEM:	TYPE 1	CONCRETE
APPLICABLE SEISMIC SYSTEM:	TYPE 1	CONCRETE
APPLICABLE WIND SYSTEM:	TYPE 1	CONCRETE
APPLICABLE MECHANICAL SYSTEM:	TYPE 1	CONCRETE
APPLICABLE ELECTRICAL SYSTEM:	TYPE 1	CONCRETE
APPLICABLE PLUMBING SYSTEM:	TYPE 1	CONCRETE
APPLICABLE MECHANICAL SYSTEM:	TYPE 1	CONCRETE
APPLICABLE ELECTRICAL SYSTEM:	TYPE 1	CONCRETE
APPLICABLE PLUMBING SYSTEM:	TYPE 1	CONCRETE

USE GROUP	ACCIDENTAL LOADS	WIND LOADS	SEISMIC LOADS	MECHANICAL LOADS	ELECTRICAL LOADS	PLUMBING LOADS	MECHANICAL LOADS	ELECTRICAL LOADS	PLUMBING LOADS
OFFICE	50	15	0.1	5	5	5	5	5	5
LABORATORY	50	15	0.1	5	5	5	5	5	5
RESTROOM	50	15	0.1	5	5	5	5	5	5
RECEPTION	50	15	0.1	5	5	5	5	5	5
STORAGE	50	15	0.1	5	5	5	5	5	5
STAIRWAY	50	15	0.1	5	5	5	5	5	5
MECHANICAL	50	15	0.1	5	5	5	5	5	5
ELECTRICAL	50	15	0.1	5	5	5	5	5	5
PLUMBING	50	15	0.1	5	5	5	5	5	5
MATERIAL STORAGE	50	15	0.1	5	5	5	5	5	5
MECHANICAL	50	15	0.1	5	5	5	5	5	5
ELECTRICAL	50	15	0.1	5	5	5	5	5	5
PLUMBING	50	15	0.1	5	5	5	5	5	5
MATERIAL STORAGE	50	15	0.1	5	5	5	5	5	5
MECHANICAL	50	15	0.1	5	5	5	5	5	5
ELECTRICAL	50	15	0.1	5	5	5	5	5	5
PLUMBING	50	15	0.1	5	5	5	5	5	5

DO NOT REMOVE FROM PROJECT. THIS IS A CONTROLLED DOCUMENT. ANY CHANGES TO THIS DOCUMENT SHALL BE MADE BY FACILITIES DESIGN, INC. DO NOT ALTER OR DESTROY THIS DOCUMENT. ALL RIGHTS RESERVED. © 2003 FACILITIES DESIGN, INC. ALL RIGHTS RESERVED.

DRAWING INDEX

SITE DRAWINGS	BUILDING DRAWINGS (CONT.)
<ul style="list-style-type: none"> C-1 - EXISTING SITE PLAN C-2 - SITE PLAN C-3 - AERIAL SITE PLAN C-4 - DETAILS 	<ul style="list-style-type: none"> B700 - DOOR AND WINDOW DETAILS B800 - GENERAL DETAILS SHEET NO. 1 B801 - GENERAL DETAILS SHEET NO. 2
FOUNDATION DRAWINGS	PLUMBING DRAWINGS
<ul style="list-style-type: none"> F100 - FOUNDATION PLAN, NOTES AND SCHEDULES F101 - FOUNDATION PLANS AND SECTIONS F200 - FOUNDATION SECTIONS F201 - FOUNDATION DETAILS F300 - FLOOR SLAB PLAN F301 - FLOOR SLAB DETAILS 	<ul style="list-style-type: none"> P100 - FIRST FLOOR UNDER FLOOR PLUMBING PLAN P101 - OVERALL ABOVE FLOOR PIPING PLAN P200 - PARTIAL PLAN AND DETAILS P201 - PLUMBING SECTION, DETAIL, AND SCHEDULE
STRUCTURAL DRAWINGS	HVAC DRAWINGS
<ul style="list-style-type: none"> S100 - ROOF FRAMING PLAN AND NOTES S101 - MISCELLANEOUS FRAMING PLANS S200 - STRUCTURAL ELEVATIONS AND DETAILS S300 - TYPICAL STRUCTURAL SECTIONS AND DETAILS S301 - STRUCTURAL SECTIONS AND DETAILS 	<ul style="list-style-type: none"> H100 - FIRST FLOOR HVAC PLAN H200 - HVAC PLAN SCHEDULES AND DETAILS
BUILDING DRAWINGS	REFRIGERATION DRAWINGS
<ul style="list-style-type: none"> B100 - OVERALL FLOOR PLAN B101 - PENTHOUSE AND MEZZANINE FLOOR PLANS B102 - OVERALL ROOF PLAN B200 - BUILDING ELEVATIONS SHEET NO. 1 B201 - BUILDING ELEVATIONS SHEET NO. 2 B300 - ENLARGED PLANS AND SECTIONS B400 - BUILDING CROSS SECTIONS B401 - WALL SECTIONS B402 - WALL SECTIONS B600 - SCHEDULES SHEET AND WINDOW DETAILS 	<ul style="list-style-type: none"> R100 - OVERALL REFRIGERATION PLAN R200 - REFRIGERATION SECTIONS AND DETAILS R300 - REFRIGERATION SECTIONS AND DETAILS
FIRE PROTECTION	ELECTRICAL DRAWINGS
<ul style="list-style-type: none"> FP100 - OVERALL FIRE SUPPRESSION PLAN 	<ul style="list-style-type: none"> E001 - SYMBOLS AND LEGENDS E100 - SINGLE-LINE DIAGRAM AND SCHEDULES E101 - SCHEDULES SHEET E200 - ELECTRICAL SITE/OVERALL PLAN E300 - FIRST FLOOR LIGHTING PLAN E301 - SECOND FLOOR & PENTHOUSE LIGHTING & POWER PLANS AND DOCK HEAT TRACE PLAN E400 - FIRST FLOOR POWER PLAN E500 - ELECTRICAL DETAILS



SITE LOCATION MAP
NORTH TO SCALE

FACILITIES DESIGN, INC.

3504 Abel Drive
Portland, Maine 04103
Tel: (207) 755-3100
Fax: (207) 255-3102
Email: info@facilitiesdesign.com
Web: www.facilitiesdesign.com
CA Member Number 7

Project Services:
 Project Planning & Management
 Architecture
 Mechanical Engineering
 Structural Engineering
 Plumbing Engineering
 Electrical Engineering
 Construction Management
 Energy Efficiency & Sustainability
 LEED Accredited
 LEED Certified
 Project Services
 LEED Accredited
 LEED Certified
 LEED Platinum

Project: Oakhurst Dairy
 Location: Deering Oaks, Maine
 Market: Specialty System: Dairy

NO.	DATE	DESCRIPTION
0	08-29-03	ISSUED FOR BIDDING

REVISIONS

This drawing is the property of FACILITIES DESIGN, INC. All rights are reserved. No part of this drawing may be reproduced in any form without the written consent of FACILITIES DESIGN, INC.

Do not scale drawings. Contractor shall verify all dimensions and conditions prior to construction. This drawing is to be approved by FACILITIES DESIGN, INC. prior to construction for recordation.

DESIGNED BY:	DATE:
DRAWN BY:	DATE:
CHECKED BY:	DATE:
PROJECT NUMBER:	SCALE:

NEW MILK COOLER

364 FOREST AVENUE
PORTLAND, MAINE 04101

PROJECT NUMBER:
2003.1141.0

DATE:
AUGUST 29, 2003

DESIGNED BY:
C100

PROJECT NUMBER:
0

TITLE:
COVER SHEET