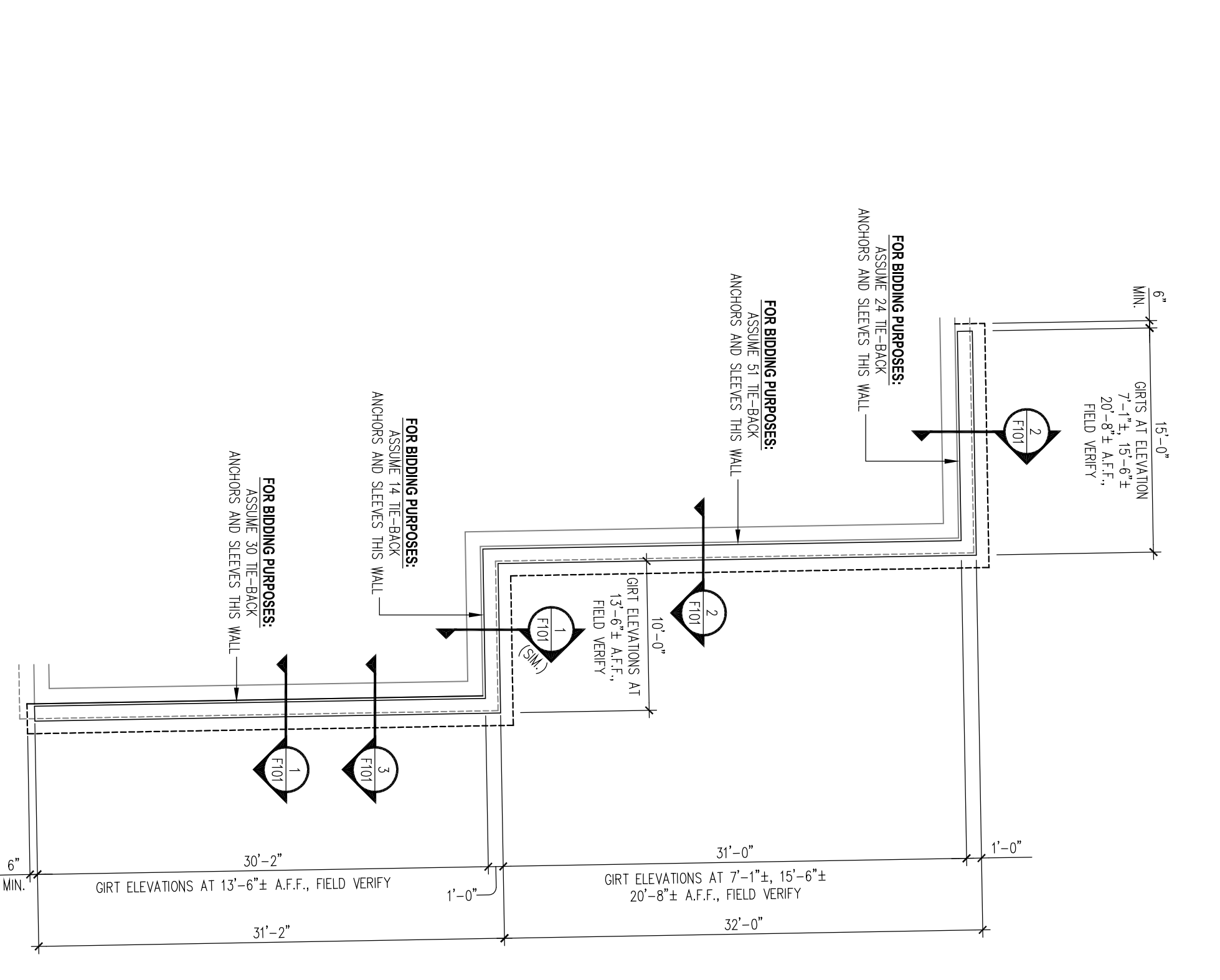
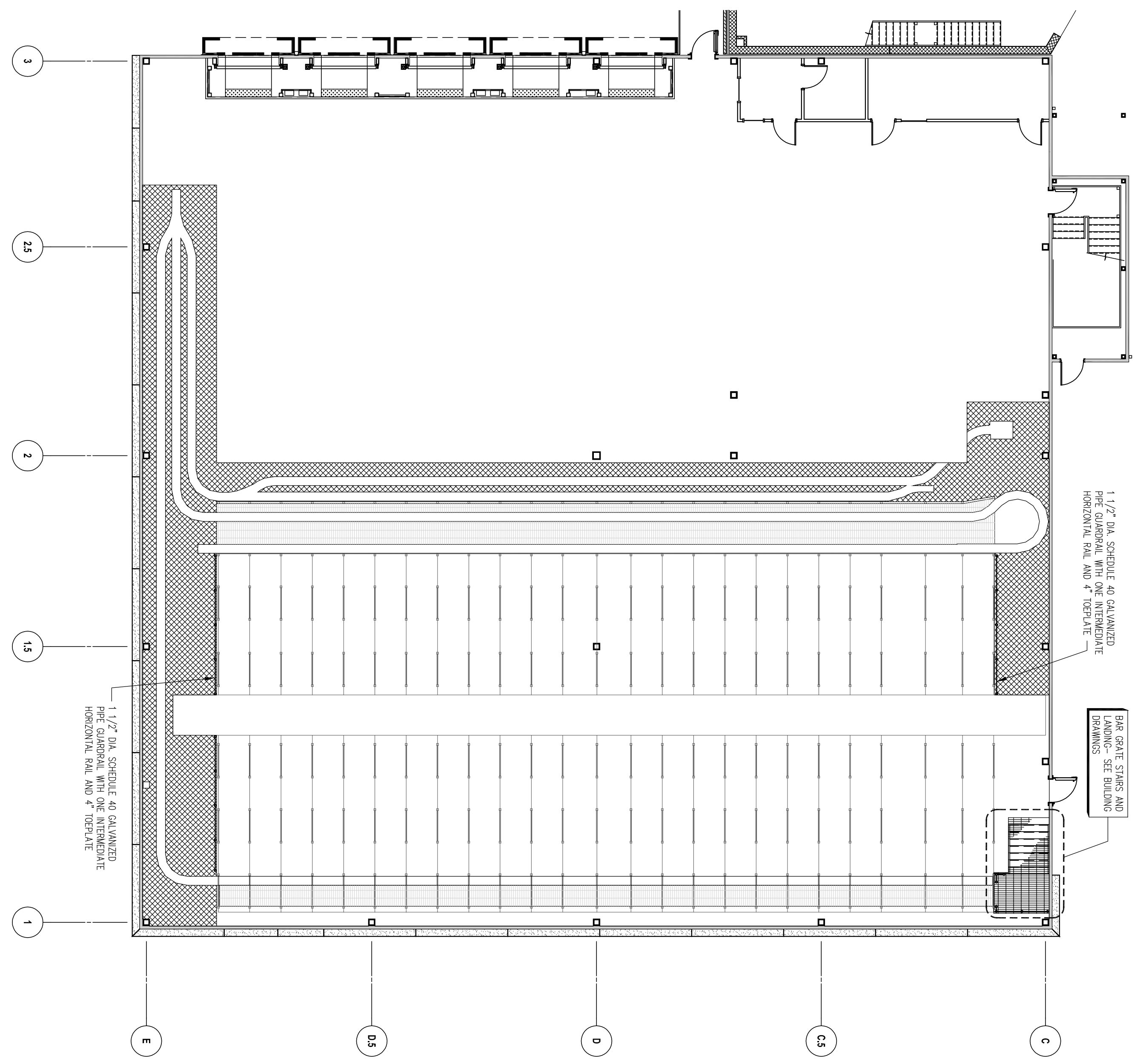


STAIRWALKWAY FOUNDATION PLAN
SCALE: 1/8" = 1'-0"
PLAN NOTES:
1. CONCRETE COLUMN BRACING REQUIREMENTS WITH ELECTRICAL DRAWINGS PRIOR TO FLOORING FLOORS OR RISER. ϕ INDICATES TYPICAL GRIDLINE. SEE DETAIL 'B' ON DRAWING T201.



NEW FACADE FOR EAST FACE OF EXISTING HIGH RISE
SCALE: 1/8" = 1'-0"
PLAN NOTES:
1. CONCRETE COLUMN BRACING REQUIREMENTS WITH ELECTRICAL DRAWINGS PRIOR TO FLOORING FLOORS OR RISER. ϕ INDICATES TYPICAL GRIDLINE. SEE DETAIL 'B' ON DRAWING T201.



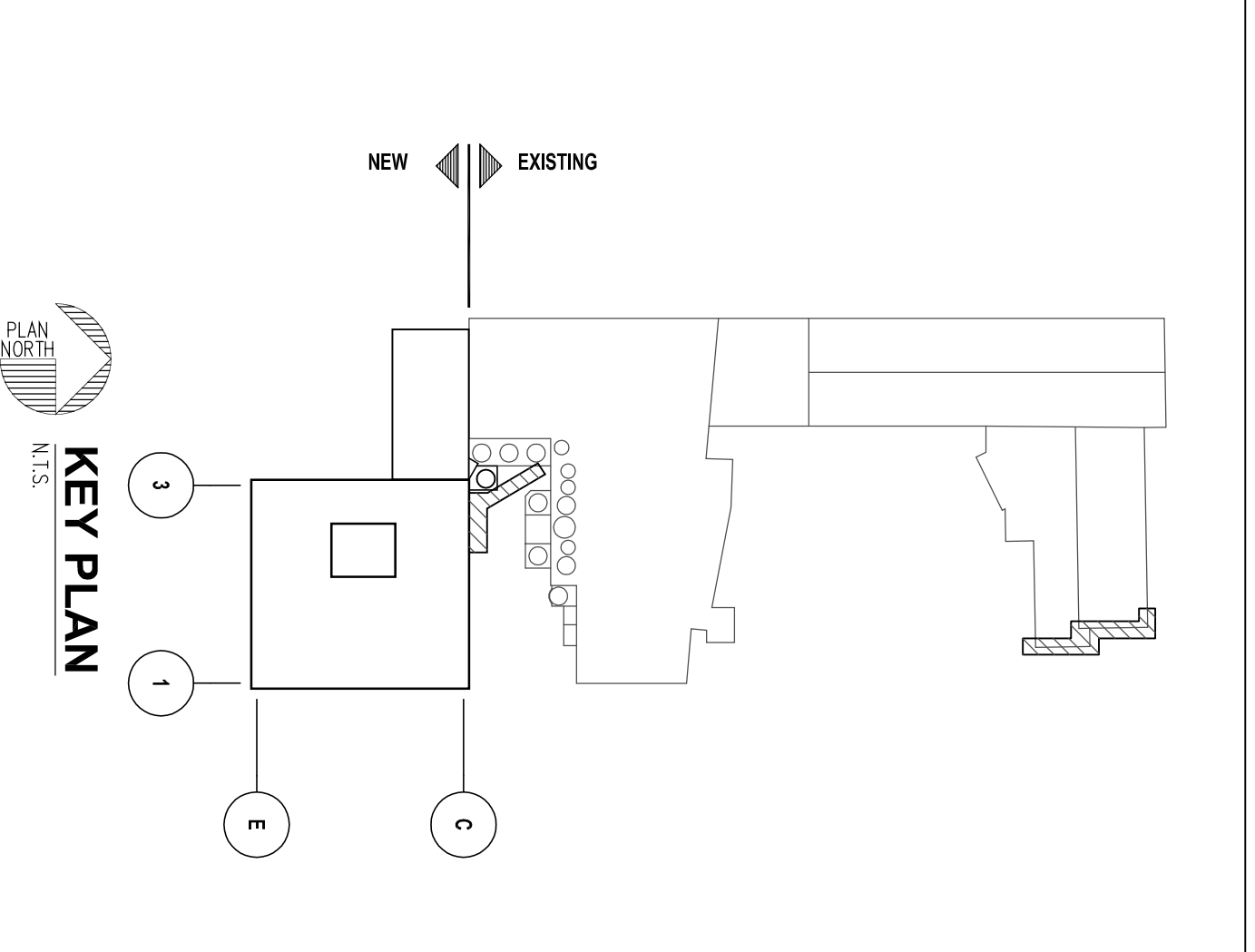
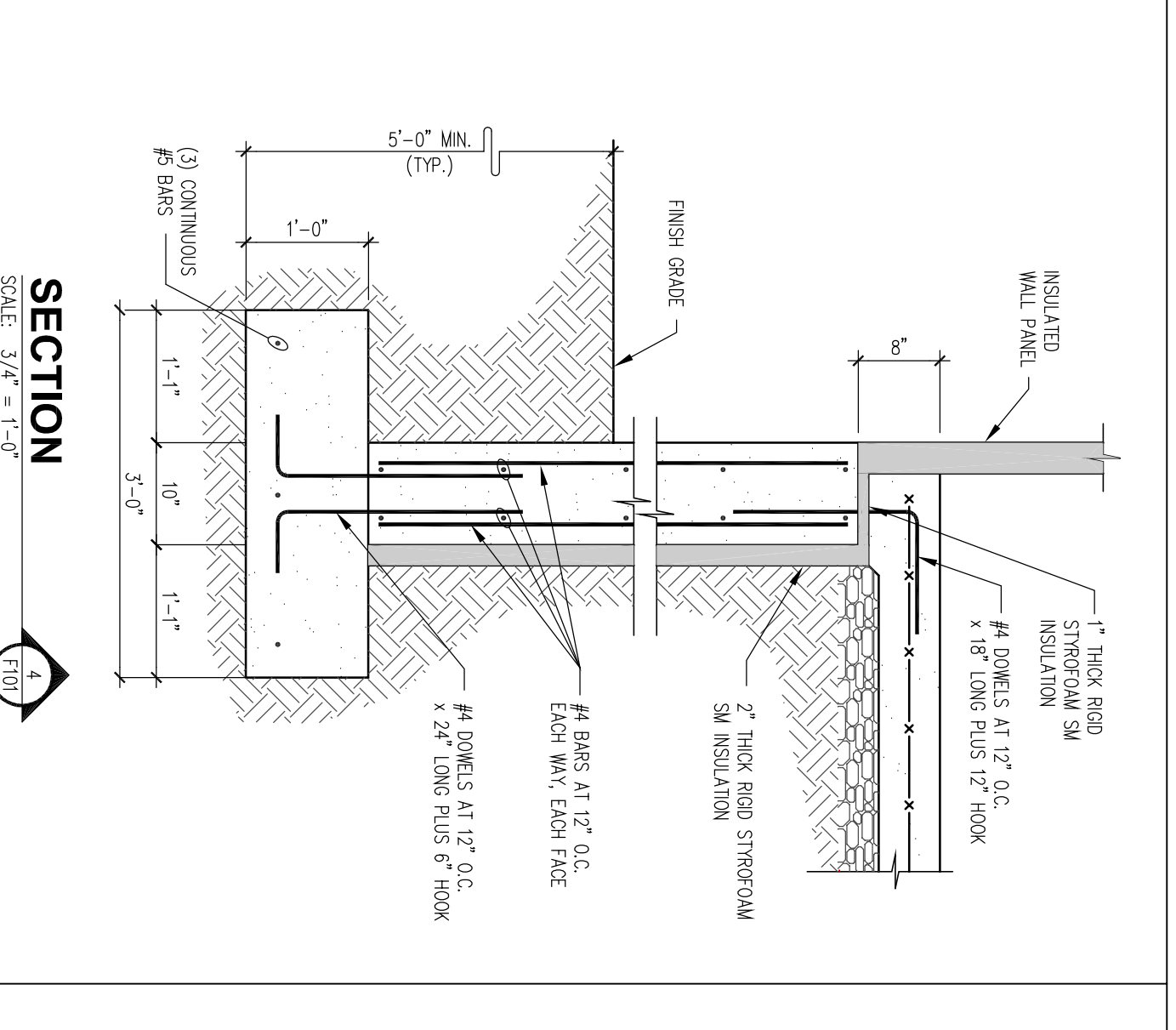
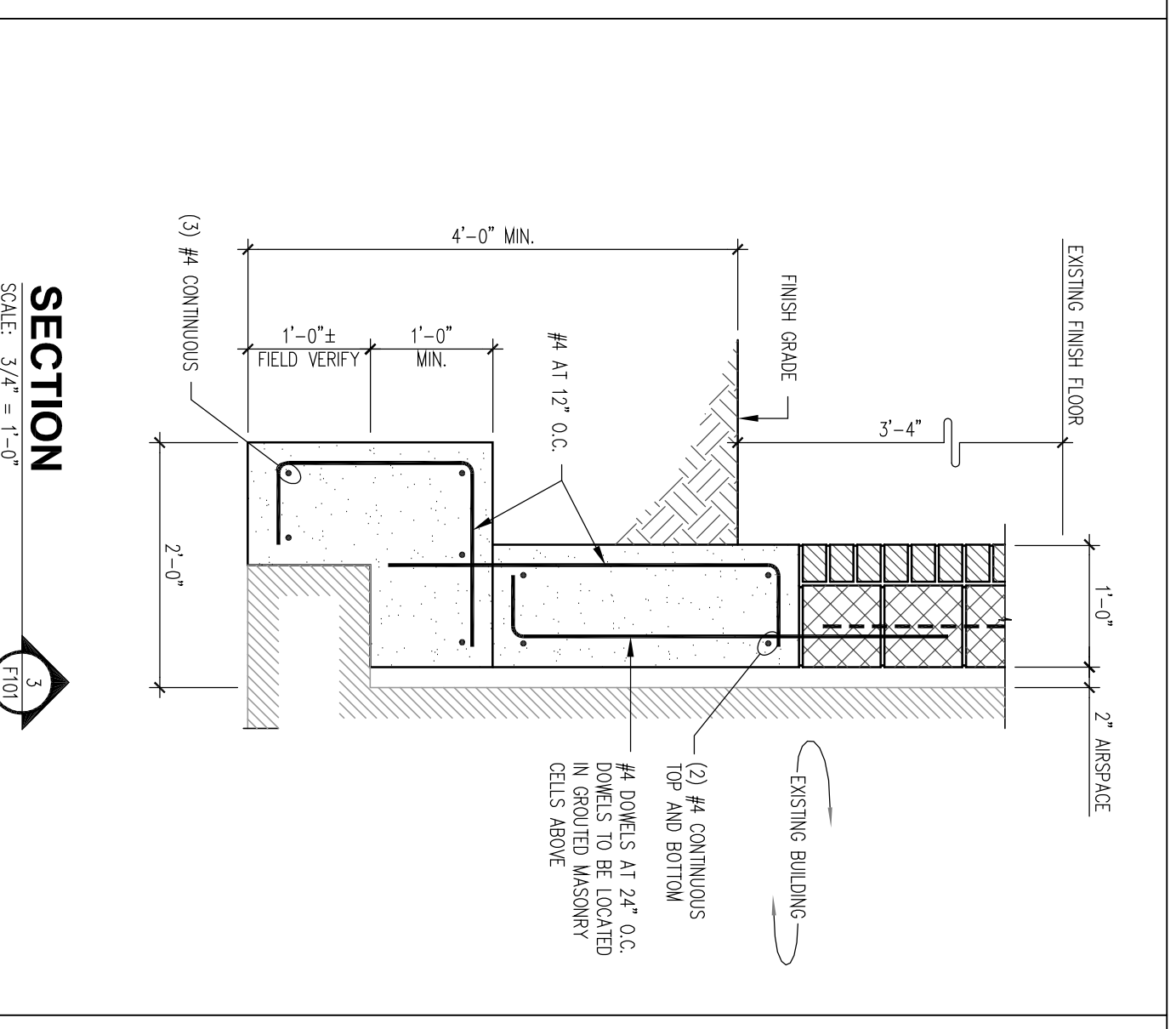
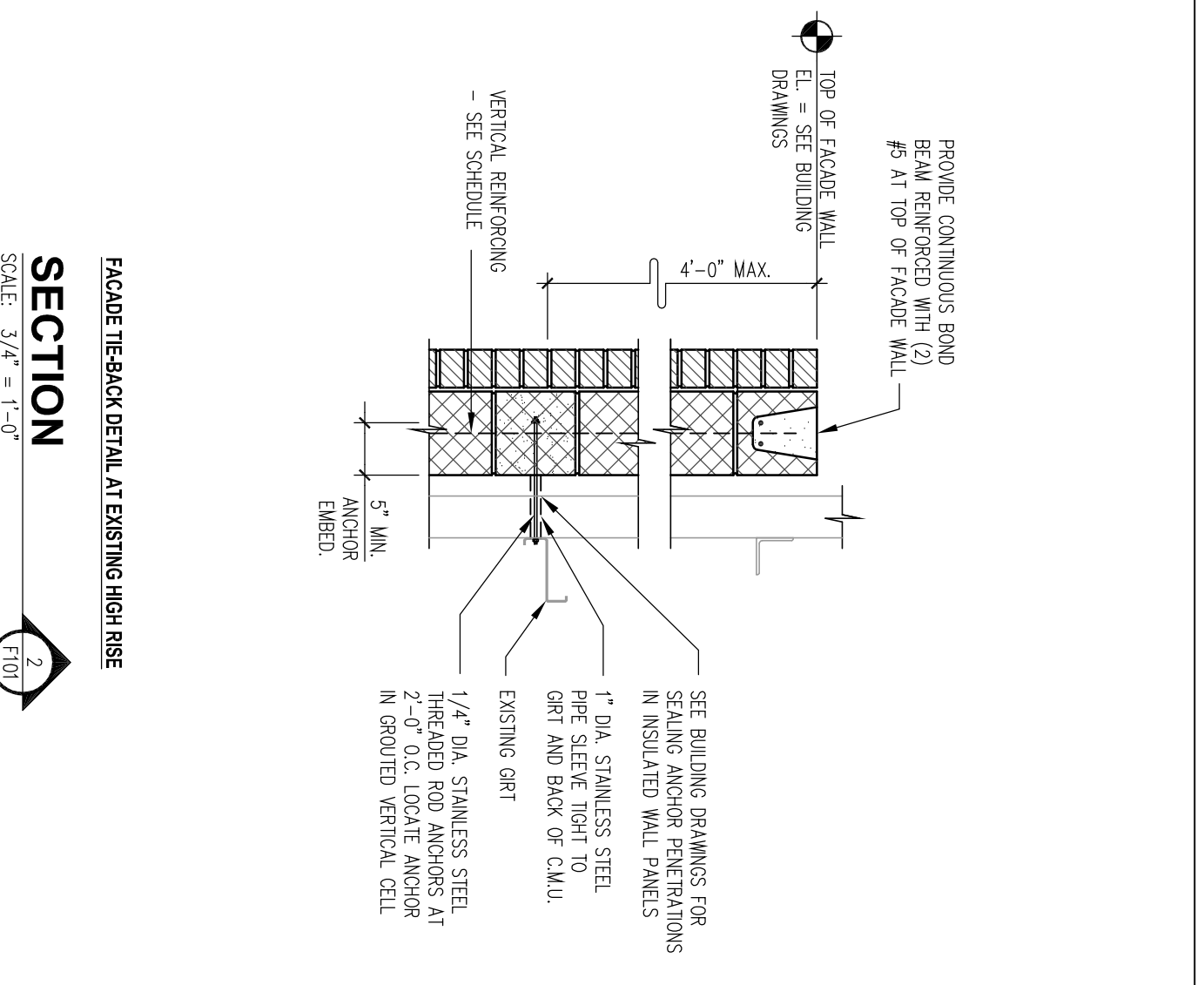
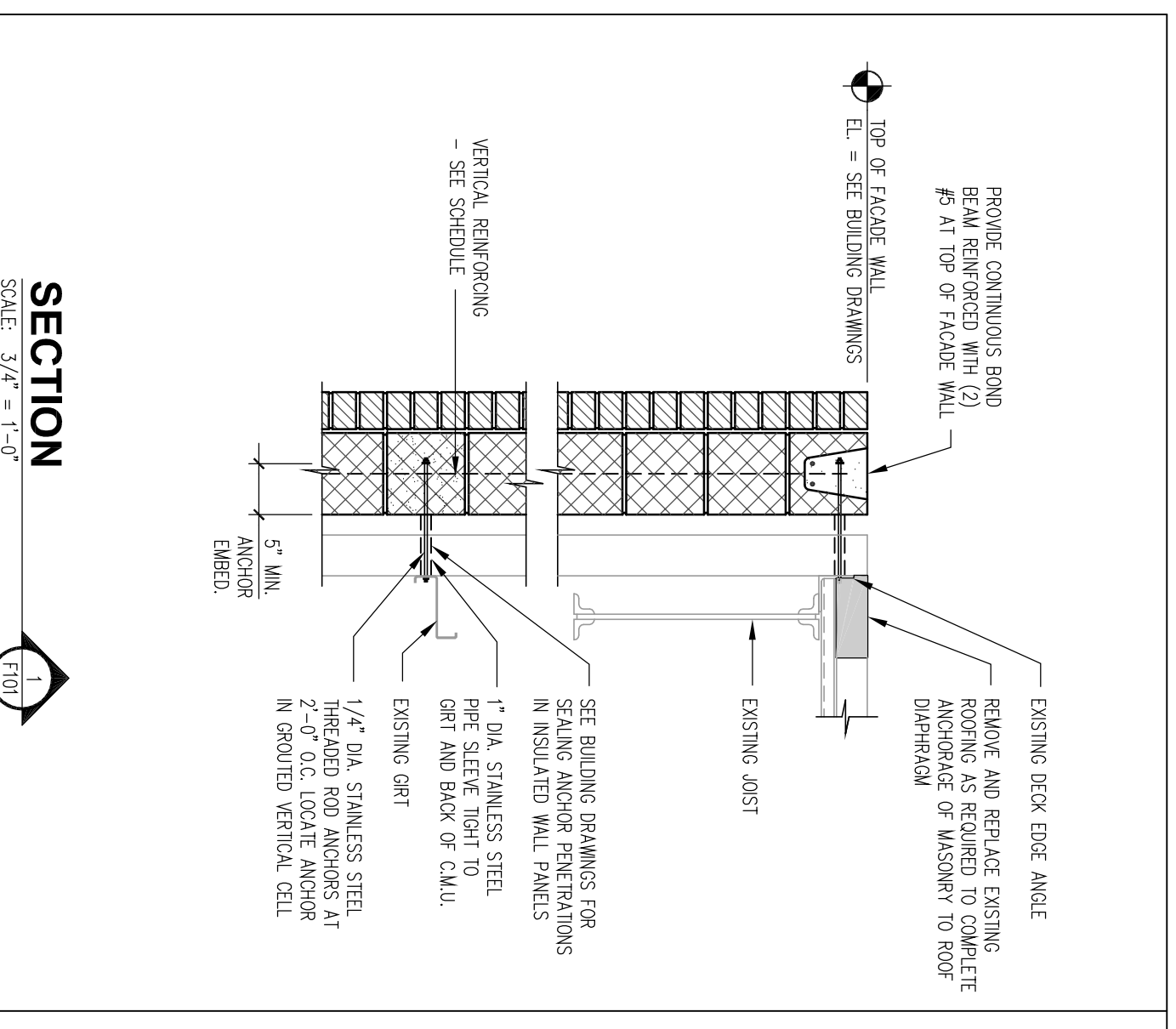
CONVEYOR GRATING AND SUPPORT FRAMING PLAN
SCALE: 1/2" = 1'-0"
PLAN NOTES:
1. CONVEYOR AS/RS SUPPLIERS SHALL PROVIDE AND INSTALL ALL FRAMING REQUIRED TO SUPPORT GRATING AND GUSSETETS THAT THEY ARE PROVIDING. UNLESS OTHERWISE SPECIFIED, ALL FRAMING SHALL BE 4" x 4" WELDED SURFACE SHALL BE PLAIN AND FINISH TO BE GALVANIZED.
2. DESIGN LOADS: UNIFORM DL = 117 PSF OR CONTRIBUTED LL = 300 POUNDS/FT² OF GRATING WIDTH.
3. DESIGN LOADS: UNIFORM DL = 117 PSF OR CONTRIBUTED LL = 300 POUNDS/FT² OF GRATING WIDTH.
4. ALL GRATING SHALL BE ATTACHED BY 5/16" TIELET WELDS, 3/4" LONG AT THROB BEARING BAR FROM EACH SIDE.
5. TOP OF GRATING EL. = (1'-0"±) TYPICAL THIS PLAN.
- GRATING BY DEAN
- GRATING BY WESTFALIA

FOOTING SCHEDULE
SEE DRAWING T201 FOR PIER DETAILS

MARK	SIZE	THICKNESS	REINFORCING	TIES
F-1	4'-0" x 4'-0"	1'-6"	(9) #4 BARS	#3 AT 12" O.C.
F-2	5'-6" x 5'-6"	1'-6"	(9) #5 BARS	(6) #5 BARS
F-3	6'-6" x 6'-6"	1'-6"	(9) #5 BARS	(9) #5 BARS
F-4	7'-0" x 7'-0"	1'-6"	(9) #5 BARS	(9) #5 BARS
F-5	8'-0" x 8'-0"	2'-0"	(9) #5 BARS	(9) #5 BARS
F-6	8'-6" x 8'-6"	2'-0"	(10) #5 BARS	(10) #5 BARS
F-7	9'-6" x 9'-6"	2'-0"	(10) #7 BARS	(10) #7 BARS
F-8	12'-0" x 12'-0"	2'-6"	(16) #7 BARS	(16) #7 BARS

PIER SCHEDULE
SEE DRAWING T201 FOR PIER DETAILS

MARK	SIZE (A x B)	VERTICAL	TIES
P-1	22" x 22"	(4) #7 BARS	#3 AT 12" O.C.
P-2	20" x 24"	(4) #7 BARS	#3 AT 12" O.C.
P-3	24" x 24"	(8) #5 BARS	#3 AT 12" O.C.
P-4	16" x 24"	(8) #5 BARS	#3 AT 12" O.C.
P-5	16" x 16"	(4) #5 BARS	#3 AT 12" O.C.
P-6	16" x 24"	(8) #5 BARS	#3 AT 12" O.C.



<p>Oakhurst DAIRY</p> <p>NEW MILK COOLER</p> <p>384 FOREST AVENUE PORTLAND, MAINE 04101</p>	<p>PROJECT NUMBER: 2003.1141.0</p>	<p>DATE: AUGUST 29, 2003</p>	<p>DRAWING NUMBER: F101</p>
	<p>PROJECT TITLE: FOUNDATION PLANS AND SECTIONS</p>	<p>REVISION: 0</p>	<p>DRAWING NUMBER: F101</p>

<p>DESIGNED BY: K.A.S.</p>	<p>DRAWN BY: G.L.B.</p>	<p>CHECKED BY: R.A.C.</p>
<p>PROJECT MANAGER: M.S.K.</p>	<p>SCALE: AS SHOWN</p>	<p>ISSUED FOR BIDDING: 0 08-29-03</p>

<p>REVISIONS</p> <table border="1"> <tr> <th>NO.</th> <th>DATE</th> <th>DESCRIPTION</th> </tr> <tr> <td>0</td> <td>08-29-03</td> <td>ISSUED FOR BIDDING</td> </tr> </table>	NO.	DATE	DESCRIPTION	0	08-29-03	ISSUED FOR BIDDING	<p>This drawing and all information contained herein, remains the property of FACILITIES DESIGN, INC. and shall not be reproduced, stored in a retrieval system, or transmitted in any form or by any means, electronic, mechanical, photocopying, recording, or by any information storage and retrieval system, without the prior written permission of FACILITIES DESIGN, INC. Do not scale drawing. Contractor shall be responsible for any discrepancies that may exist between this drawing and the actual conditions of the site. Any discrepancies shall be reported to FACILITIES DESIGN, INC. prior to construction of the installation.</p>
NO.	DATE	DESCRIPTION					
0	08-29-03	ISSUED FOR BIDDING					

<p>3904 Auld Drive Columbia, Pennsylvania 17512 Phone: (717) 285-9442 Fax: (717) 285-3102 Email: info@facilitiesdesign.com Web: www.facilitiesdesign.com CA Number: 2002018</p>	<p>FACILITIES DESIGN, INC. Engineering & Design Services</p> <p>Architectural Engineering Blade Structural Foundation Fire Protection Interior Design Mechanical Process Design Structural Thermal Analysis Utility Water Treatment</p>
---	--