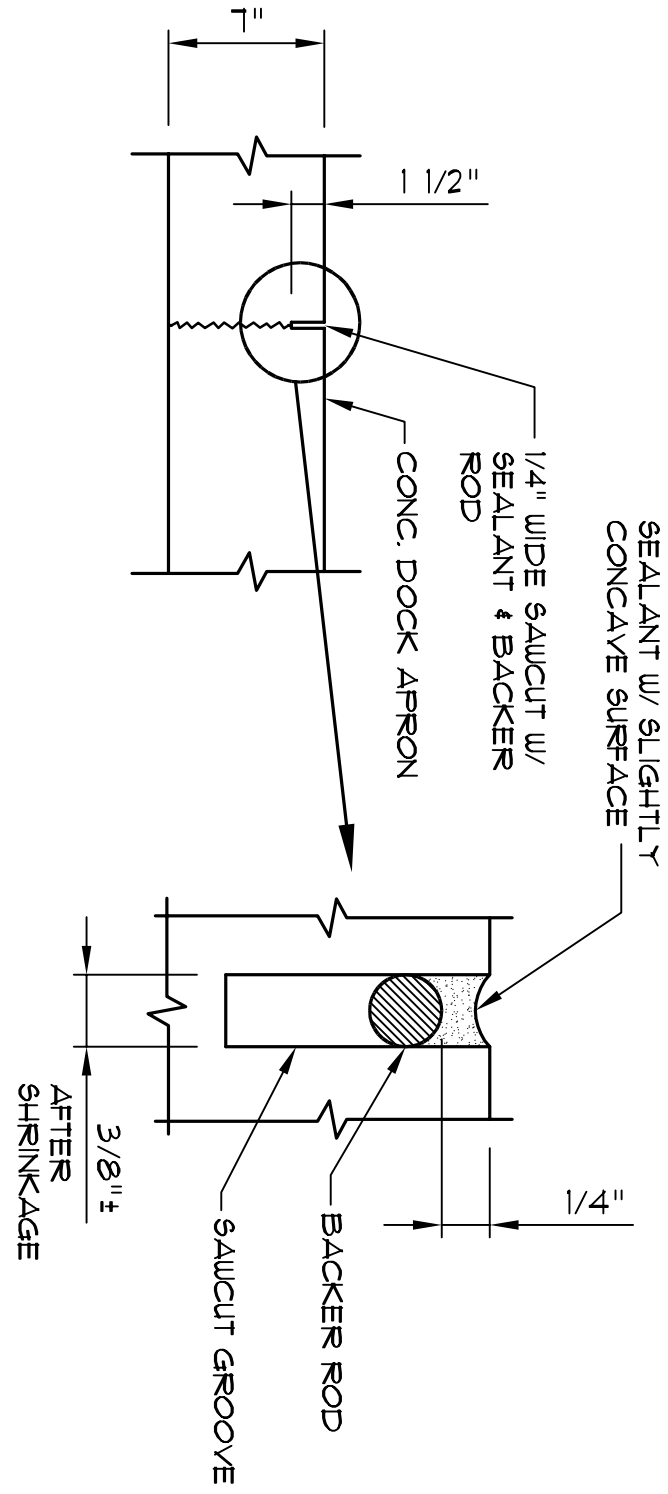
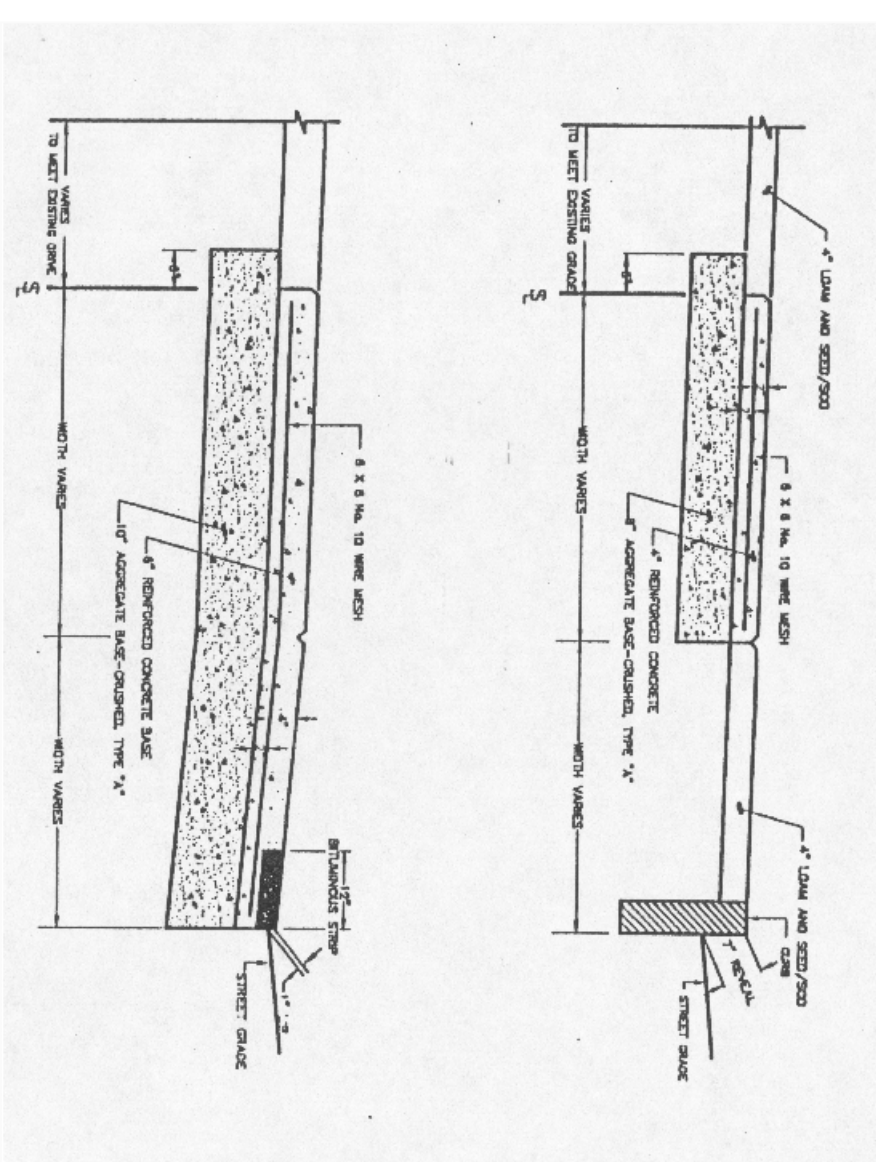


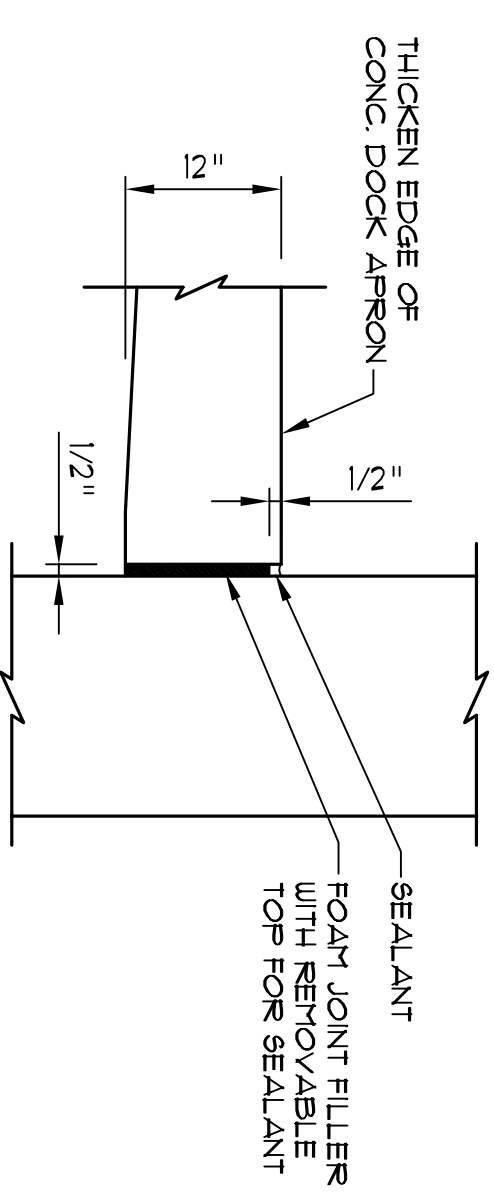
8 CONSTRUCTION JOINT DETAIL  
NOT TO SCALE



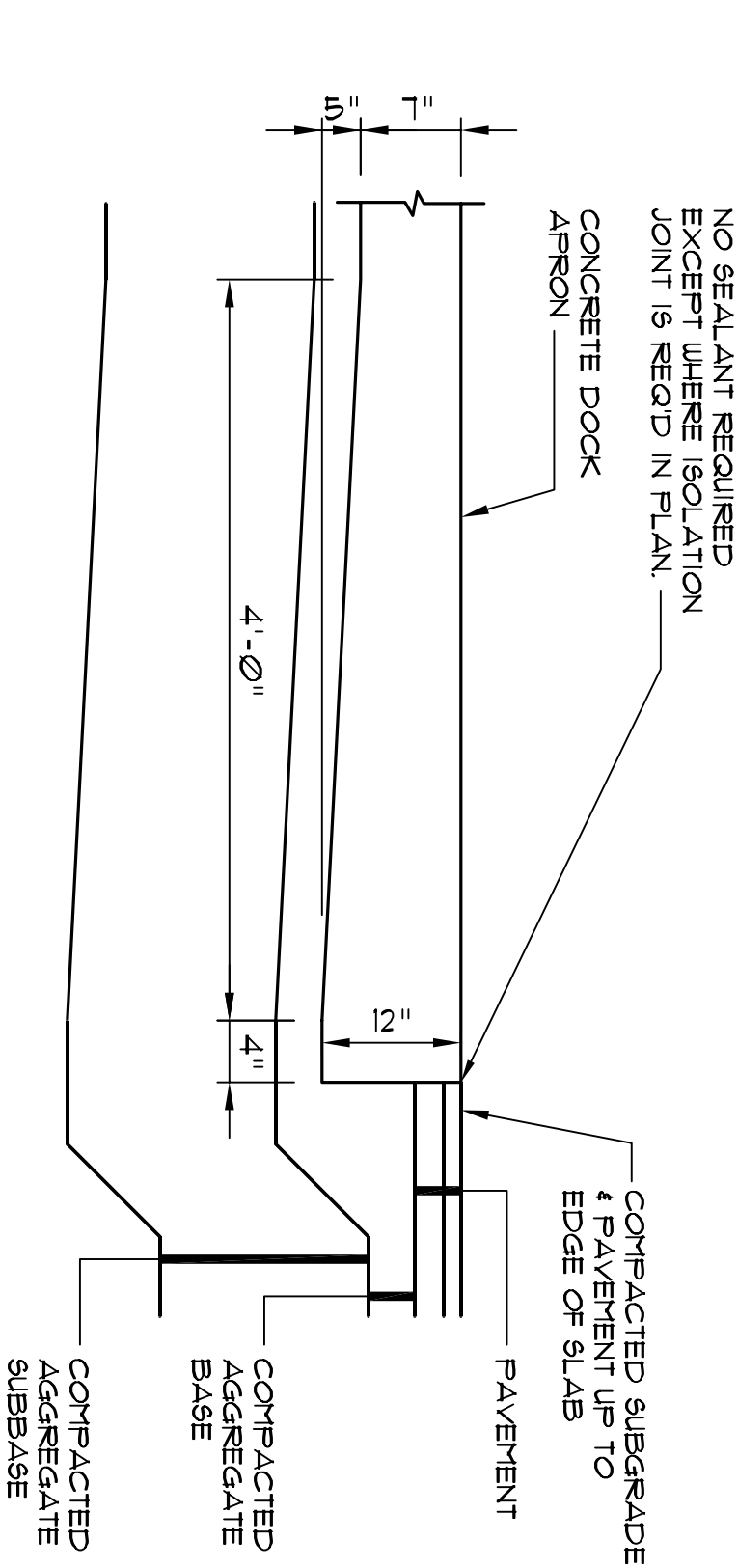
6 SAWCUT CONTROL JOINT DETAIL  
NOT TO SCALE



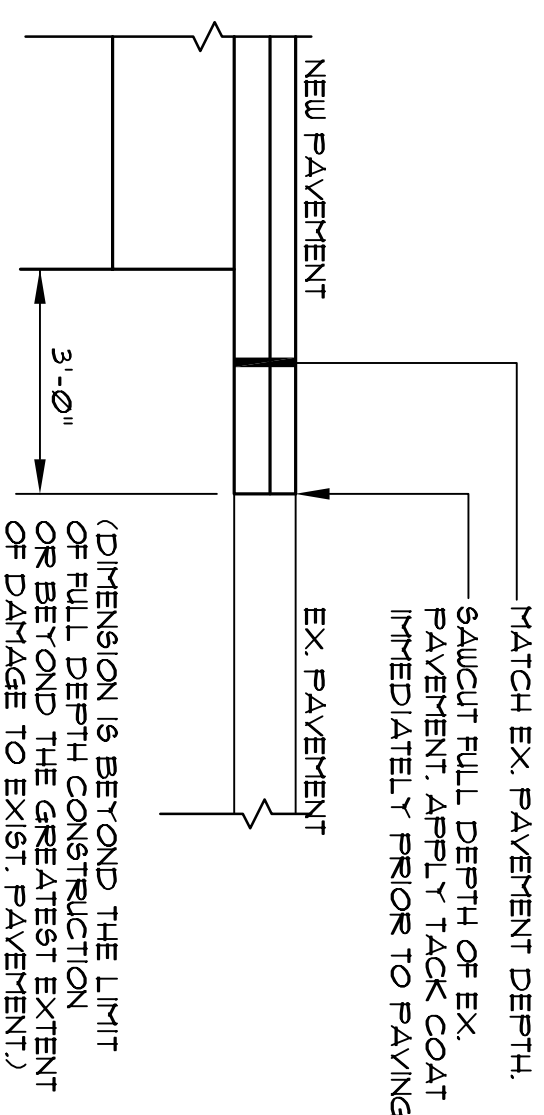
3 CONCRETE SIDEWALK AND DRIVEWAY CONSTRUCTION  
NOT TO SCALE



9 TYP. ISOLATION JOINT  
NOT TO SCALE



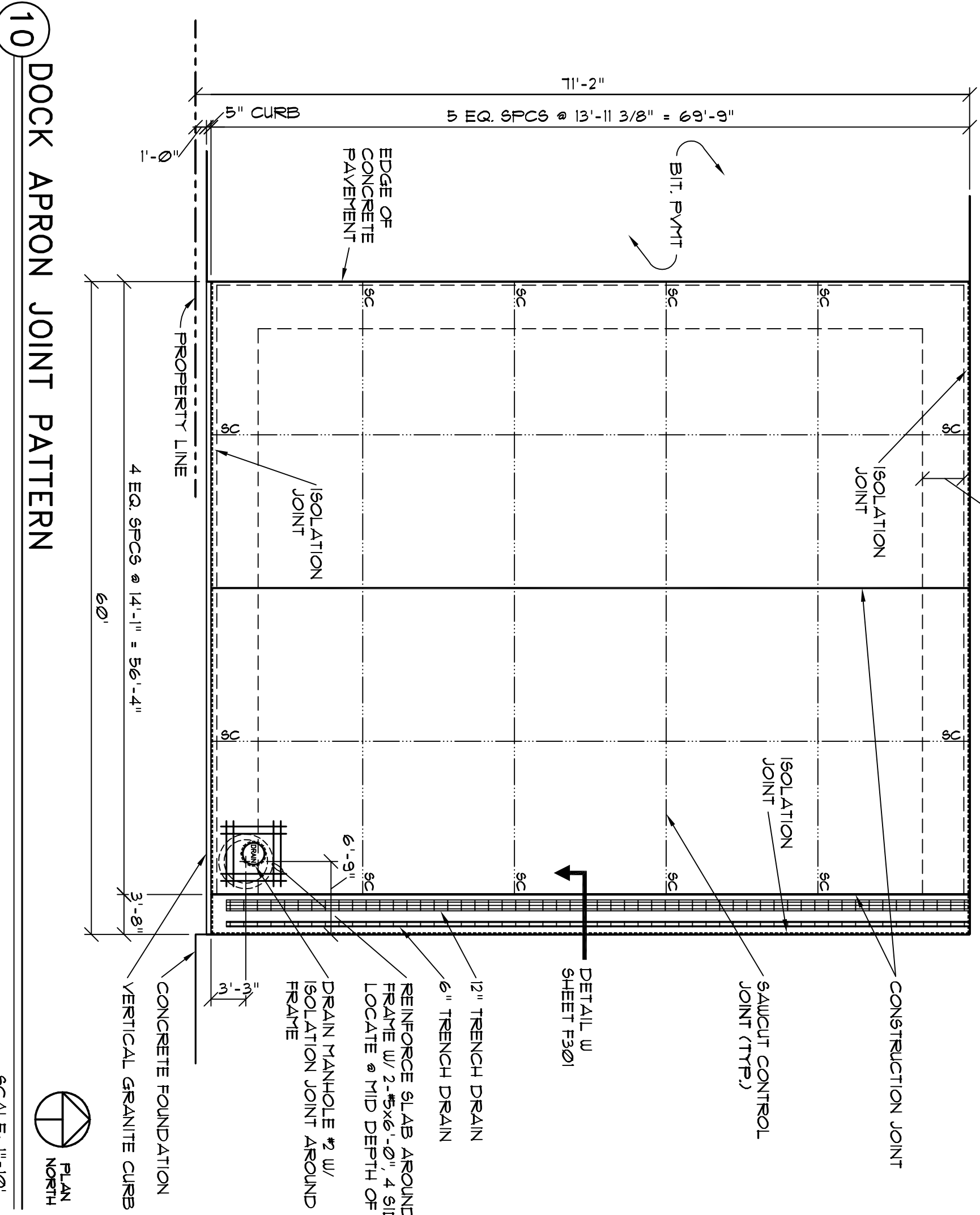
7 THICKENED EDGE DETAIL  
NOT TO SCALE



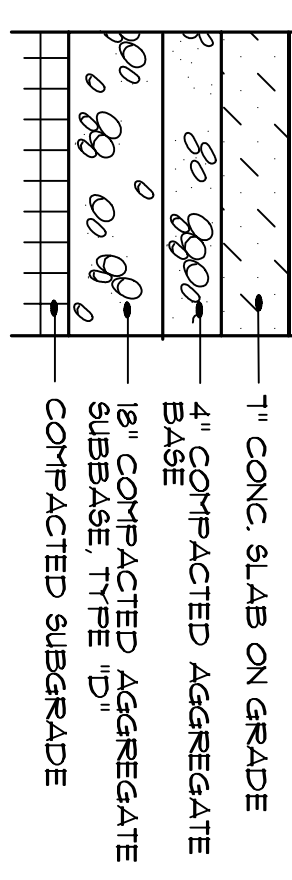
4 PAVEMENT CUTTING & MATCHING  
NOT TO SCALE

CONCRETE NOTES FOR DOCK APRON

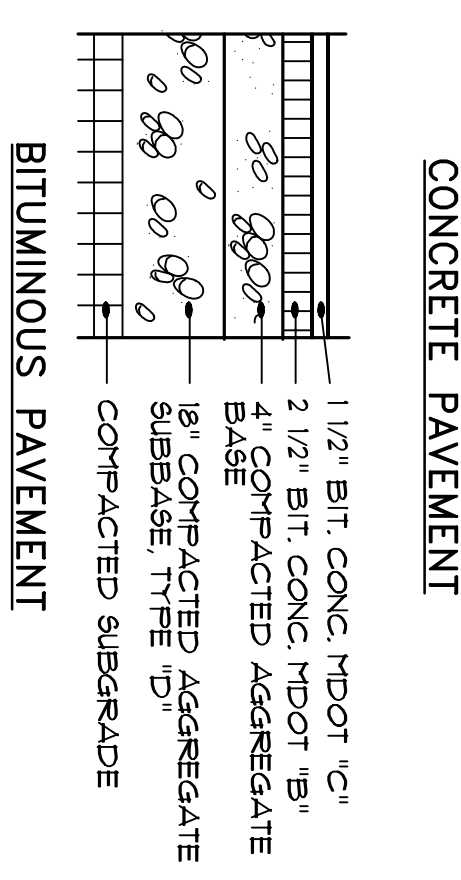
- THE FOLLOWING REQUIREMENTS APPLY TO THE CONCRETE DOCK APRON SLAB ONLY. ALL SPECIFICATION REQUIREMENTS IN SECTION 03300 APPLY TO THE DOCK APRON SLAB, AS WELL AS OTHER SLABS, UNLESS NOTED OTHERWISE IN THESE NOTES.  
CONCRETE MIXTURE: COMPLY WITH SPECIFICATION SECTION 03300 PARAGRAPHS 219C EXCEPT AS FOLLOWS: CEMENTITIOUS MATERIALS RATIO 0.50  
MIN. CEMENT CONTENT 564 LB/CY.  
SLAB FINISH: PROVIDE A FINE BROOK FINISH. A TROWEL FINISH IS NOT DESIRED. NO MACHINE FLOATING OR TROWELING IS PERMITTED.  
CURING: PROVIDE 7-DAY WET CURE BY COVERING SLAB WITH CURING COVER SHEETS WITH ALL JOINTS AND PERIPHERAL LAPED AND TAPED DO NOT ADD WATER FOR CURING. BEGIN CURING WITH WATER-SOLUBLE FIBER BRUSHING AND JOINT CUTTING BEGINS WITH CURING. REMOVE CURING COVER SHEETS TO SLAB SURFACE TO ALLOW CURING TO PROCEED IN ACCORDANCE WITH MANUFACTURER'S INSTRUCTIONS.  
PENETRATING SEALER: APPLY PENETRATING SEALER AT MANUFACTURER'S RECOMMENDED RATE AND IN ACCORDANCE WITH MANUFACTURER'S INSTRUCTIONS. OBSERVE MANUFACTURER'S RECOMMENDED WAITING PERIOD FOLLOWING CONCRETE PLACEMENT & CURING BEFORE APPLYING SEALER.  
CUT SAW CUT JOINTS USING A 6-2000 SOFT CUT SAW OR LARGER WITH 1500' X 0.25' BLADE.
- PROVIDE THE FOLLOWING MATERIALS FOR THE CONCRETE DOCK APRON SAWCUT PRODUCT DATA FOR EACH ITEM FOR REVIEW BY ENGINEER.  
CURING COVER: WHITE SYNTHETIC FIBER MAT WITH BONDED WHITE POLYETHYLENE SHEET EQUIVALENT TO TRANSGUARD 4000 BY REEF INDUSTRIES, INC.  
JOINT SEALANT: TWO-PART POLYURETHANE SEALANT EQUIVALENT TO SONOLASTIC SL-2 (SEALANT AND FINE JOINT) AND INSTALL SEALANT IN ACCORDANCE WITH MANUFACTURER'S INSTRUCTIONS.  
FOAM JOINT FILLER: 15 LB. DENSITY POLYETHYLENE FOAM WITH REMOVABLE CAP ON TOP FOR SEALANT RESERVOIR.  
DIAMOND DOUELS FOR CONSTRUCTION JOINTS: DIAMOND DOUEL SYSTEM BY PNA, INC., INCLUDING 3/8" X 4 1/2" X 4 1/2" STAINLESS STEEL PLATES WITH PLASTIC BASES AND SLEEVES. INSTALL SLEEVES PARALLEL TO THE SLAB SURFACE AT SPACINGS INDICATED ON THE DRAWINGS AND IN ACCORDANCE WITH MANUFACTURER'S INSTRUCTIONS.  
PENETRATING SEALER: WATER BASED SILANE/SILOXANE CHLORIDE SCREEN EQUIVALENT TO SALTGUARD UB BY PROSOCCO, INC.



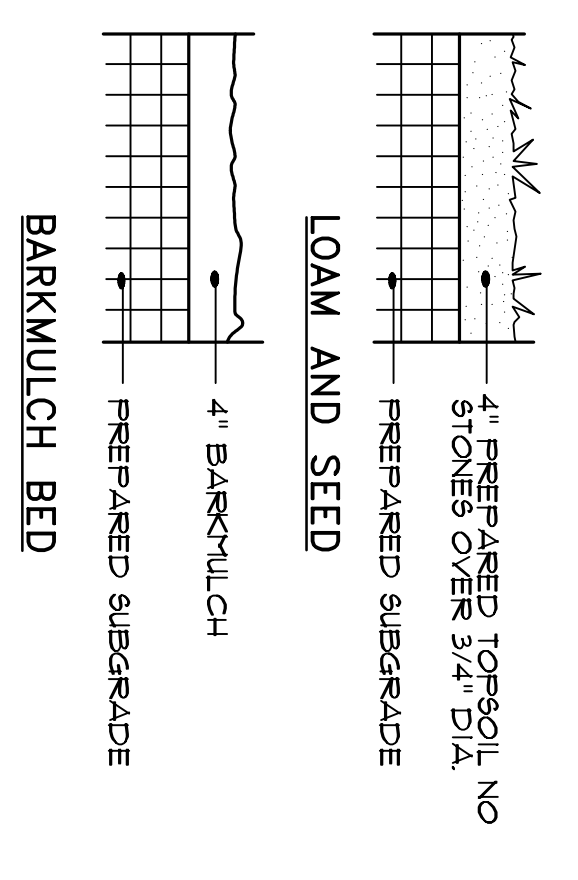
10 DOCK APRON JOINT PATTERN  
SCALE: 1"=10'



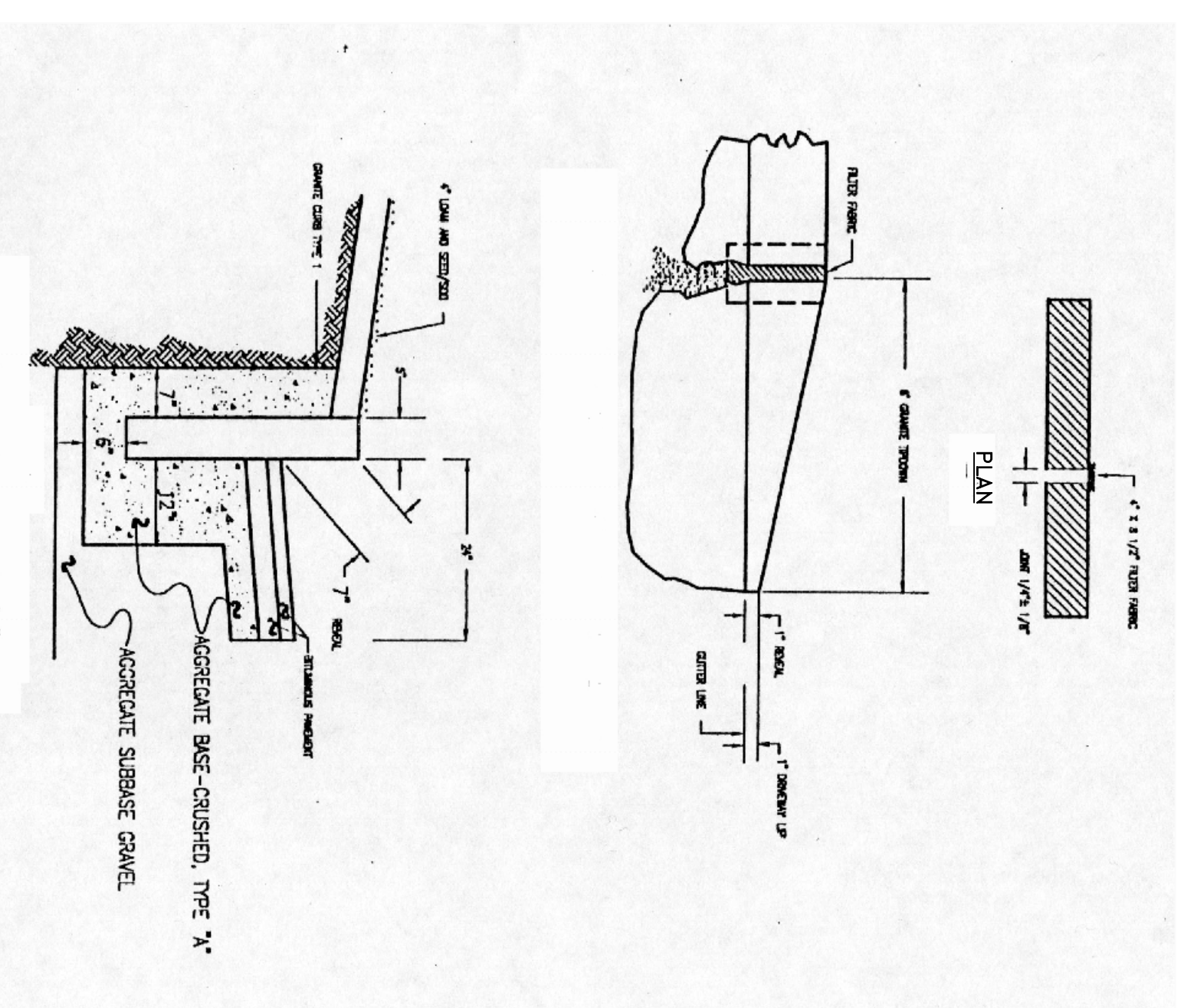
1 SURFACING DETAILS  
NOT TO SCALE



2 CURB INSTALLATION  
NOT TO SCALE



3 BITUMINOUS PAVEMENT



4 PAVEMENT CUTTING & MATCHING

**CONSULTING ENGINEERS, INC.**  
PINKHAM & GREER

**DETAILS**

OAKHURST DAIRY CORPORATION  
364 FOREST AVENUE, PORTLAND  
OAKHURST DAIRY  
2003 EXPANSION, FOREST AVE.

REV.	DATE	DESCRIPTION
3	9/10/03	ADDED DETAIL SHEET 05, REVD CONCRETE DETAILS
2	7/13/03	ADDED FOUNDATION DRAIN DETAIL
1	7/10/03	REVD GRADING UTILITIES AND RELATED DETAILS

SCALE: AS SHOWN    DRN BY: JDC  
DATE: JULY 7, 2003    DESG BY: TSG  
PROJECT: 03127    CHK BY: TSG

C4

