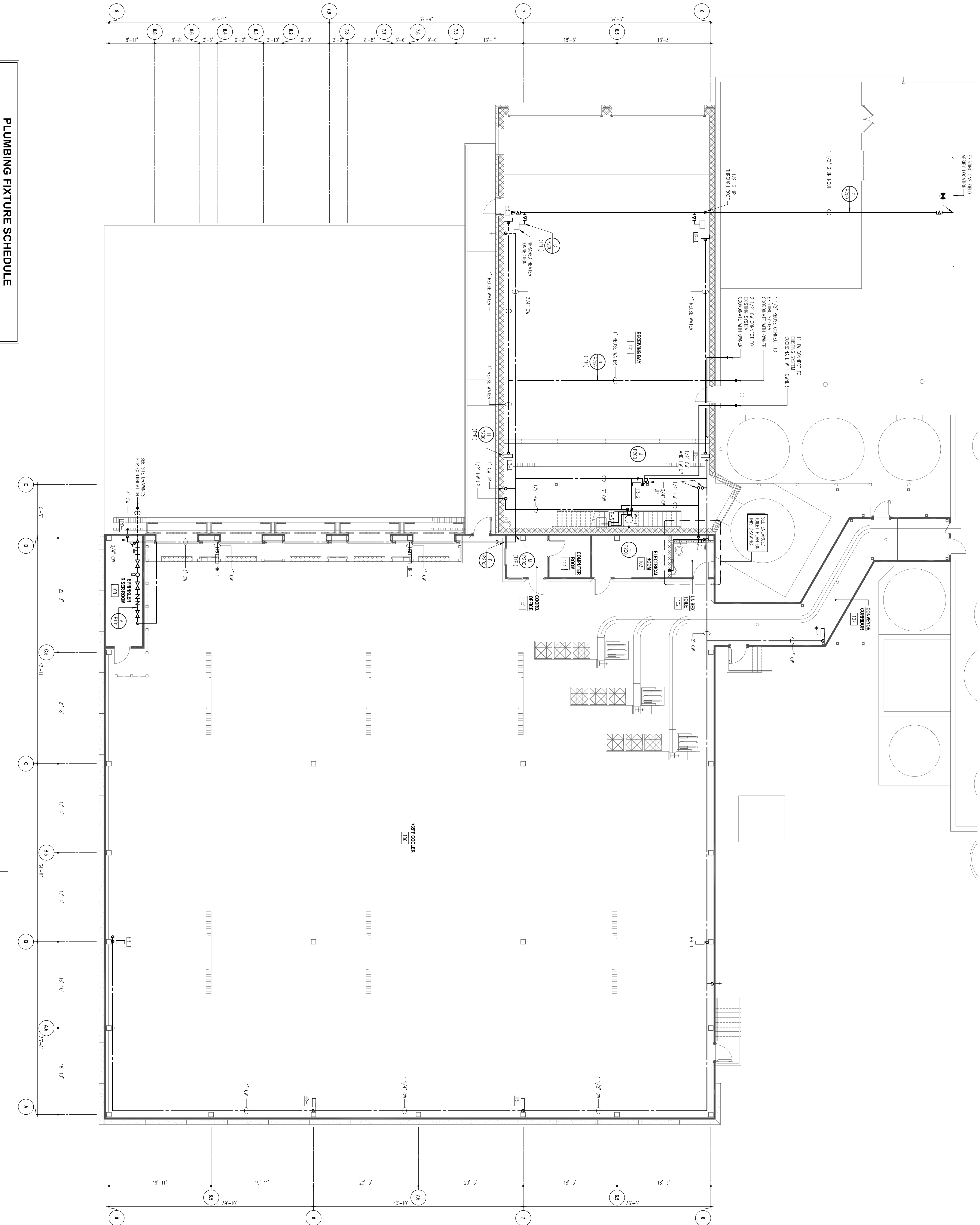
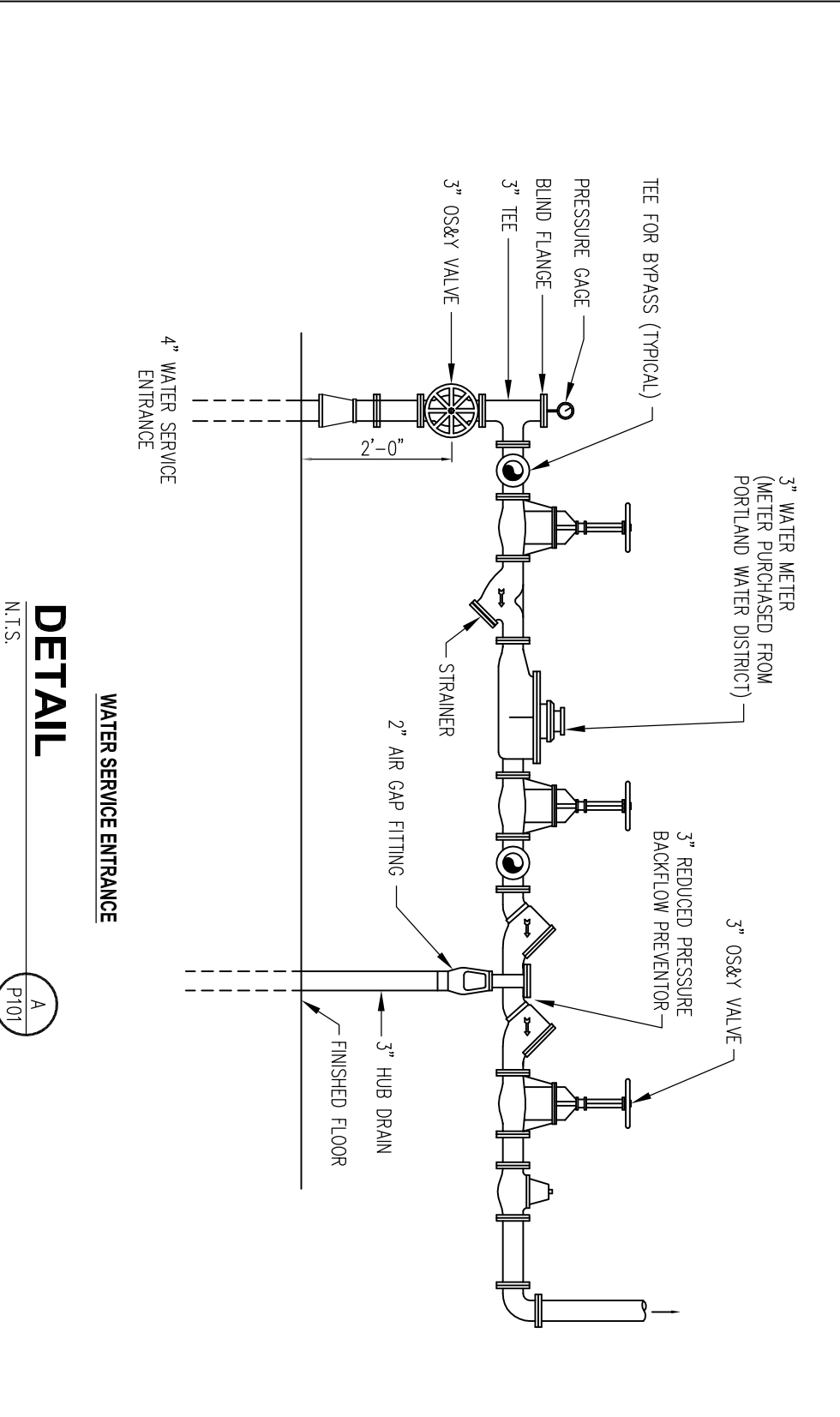


TAG	DESCRIPTION	HW	CV	SOAK	VENT	MANUFACTURER	REMARKS
P-1	LAVATORY	1/2"	1/2"	1 1/2"	-	-	-
P-2	WATER CLOSET	-	1"	3"	1 1/2"	-	-
P-3	SINK	1/2"	1/2"	1 1/2"	1 1/2"	-	-
P-4	URINAL	-	1"	1 1/2"	1 1/2"	-	-
P-5	HAND WASH SINK	1/2"	1/2"	1 1/2"	1 1/2"	-	-
HR-1	HOSE REEL	-	1"	-	-	-	-
HR-2	WALL MOUNT	-	3/4"	-	-	-	-
TR-1	TRENCH DRAIN	-	-	-	-	-	6" WIDE
TR-2	TRENCH DRAIN	-	-	-	-	-	12" WIDE
CB-1	CATCH BASIN	-	-	-	-	-	6" WIDE
CB-2	CATCH BASIN	-	-	-	-	-	12" WIDE

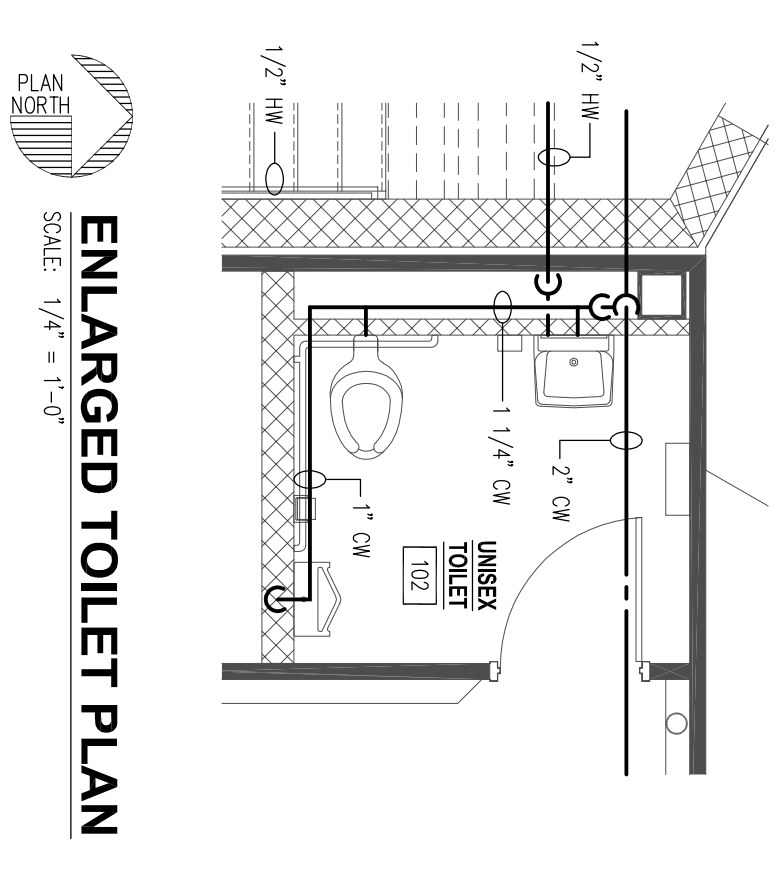


**FIRST FLOOR ABOVE-FLOOR PIPING PLAN**  
SCALE: 1/8" = 1'-0"

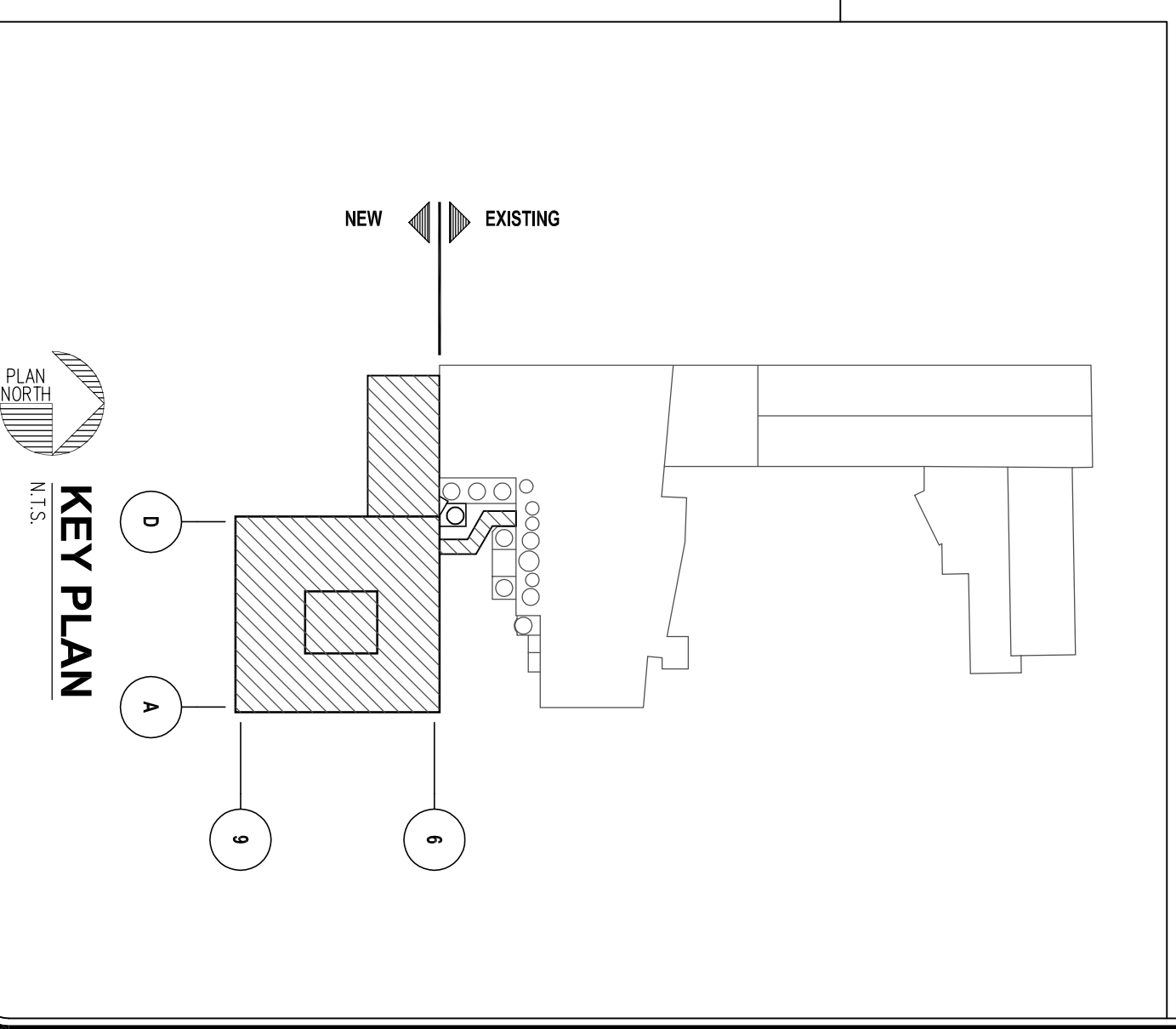
- PLAN NOTES:
1. NOT ALL SHUT-OFF VALVES ARE SHOWN ON PLAN. PROVIDE SHUT-OFF VALVES TO ALL WATER AND COLD WATER FEES ARE TIED TOGETHER FOR 1 FEET TO HOSE REEL. PROVIDE SHUT-OFF VALVES AND CHECK VALVES PRIOR TO THE



**DETAIL**  
SCALE: 1/4" = 1'-0"



**ENLARGED TOILET PLAN**  
SCALE: 1/4" = 1'-0"



**KEY PLAN**  
SCALE: 1/8" = 1'-0"

<p><b>Oakhurst</b> DAIRY</p>	<p><b>NEW MILK COOLER</b></p> <p>384 FOREST AVENUE PORTLAND, MAINE 04101</p>	<p>PROJECT NUMBER:</p> <p><b>0167.00</b></p>	<p>DATE:</p> <p><b>MARCH 1, 2004</b></p>	<p>DRAWING NUMBER:</p> <p><b>P101</b></p>	<p>REVISION:</p> <p><b>0</b></p>
		<p>PROJECT TITLE:</p> <p><b>OVERALL ABOVE-FLOOR PIPING PLAN</b></p>	<p>DESIGNED BY:</p> <p>G.S.T.</p>	<p>DRAWN BY:</p> <p>G.L.B.</p>	<p>CHECKED BY:</p> <p>G.S.T.</p>
<p>This drawing and all information contained herein, remains the property of FACILITIES DESIGN, INC. No part of this drawing may be reproduced in whole or in part without the written consent of FACILITIES DESIGN, INC. Do not scale drawing. Contractor shall be responsible for construction. Any discrepancies shall refer to construction documents.</p>					
<p><b>FACILITIES DESIGN</b></p> <p>3904 Asad Drive Columbia, Pennsylvania 17512 Phone: (717) 285-9442 Fax: (717) 285-3102 Email: info@facilitiesdesign.com Web: www.facilitiesdesign.com CA NUMBER: 20020118</p> <p>Architectural Engineering Building Structural Fire Protection Mechanical Process Thermal Radiation Process Services Project Management Process Safety Water/Wastewater Systems</p>					