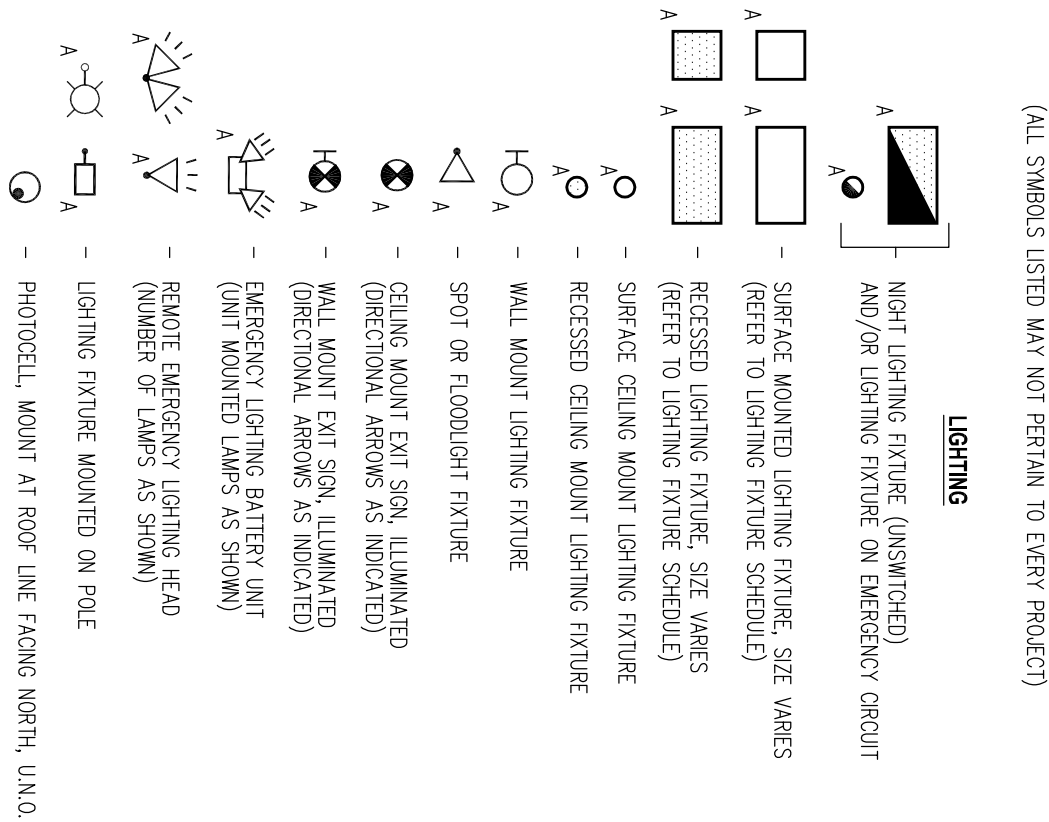
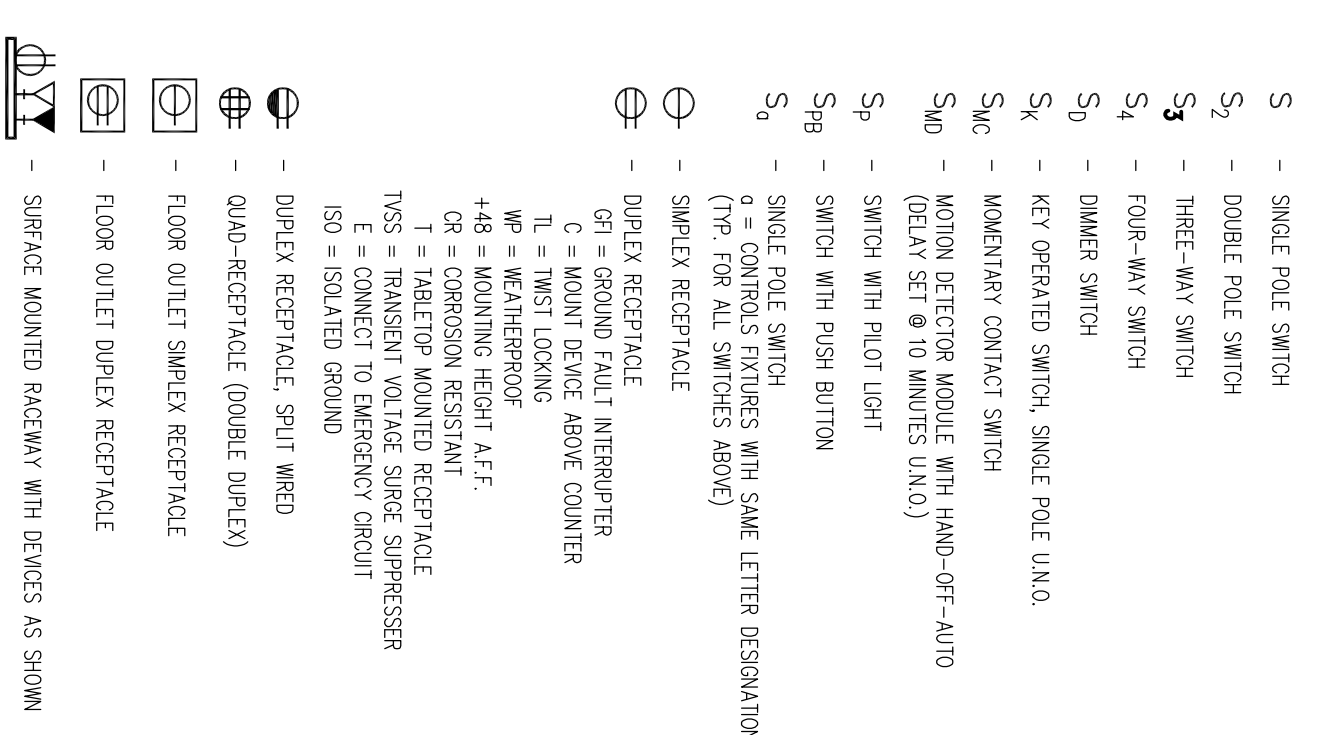


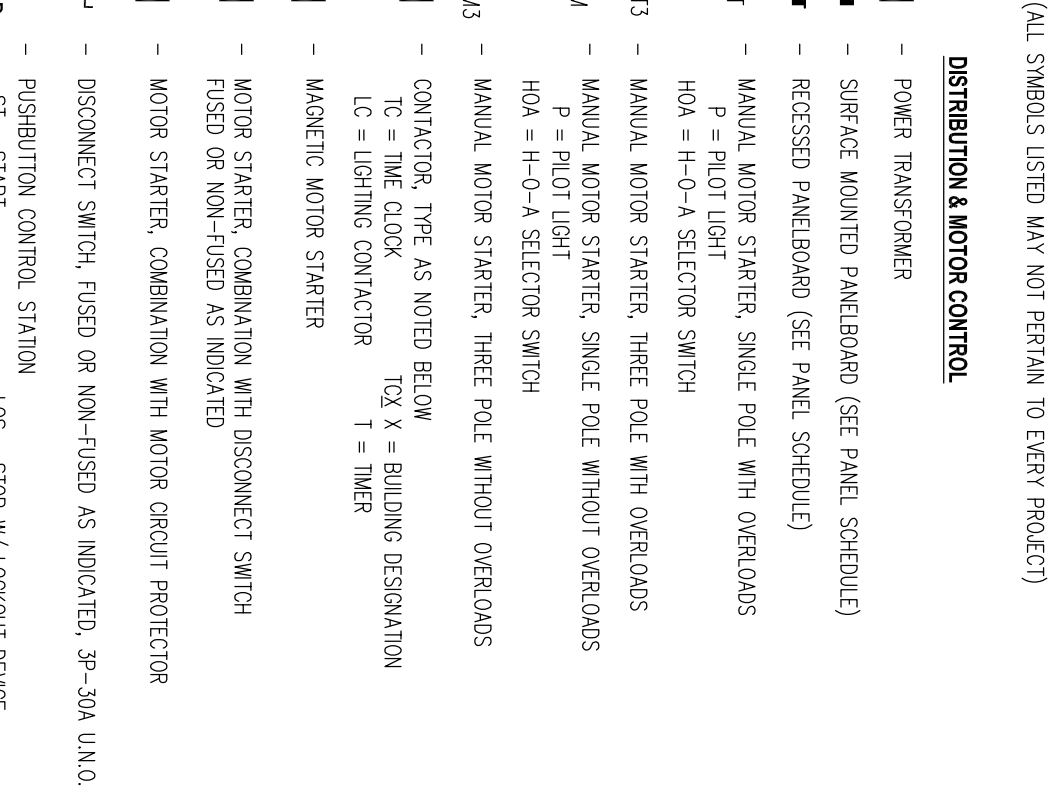
PLAN SYMBOLS



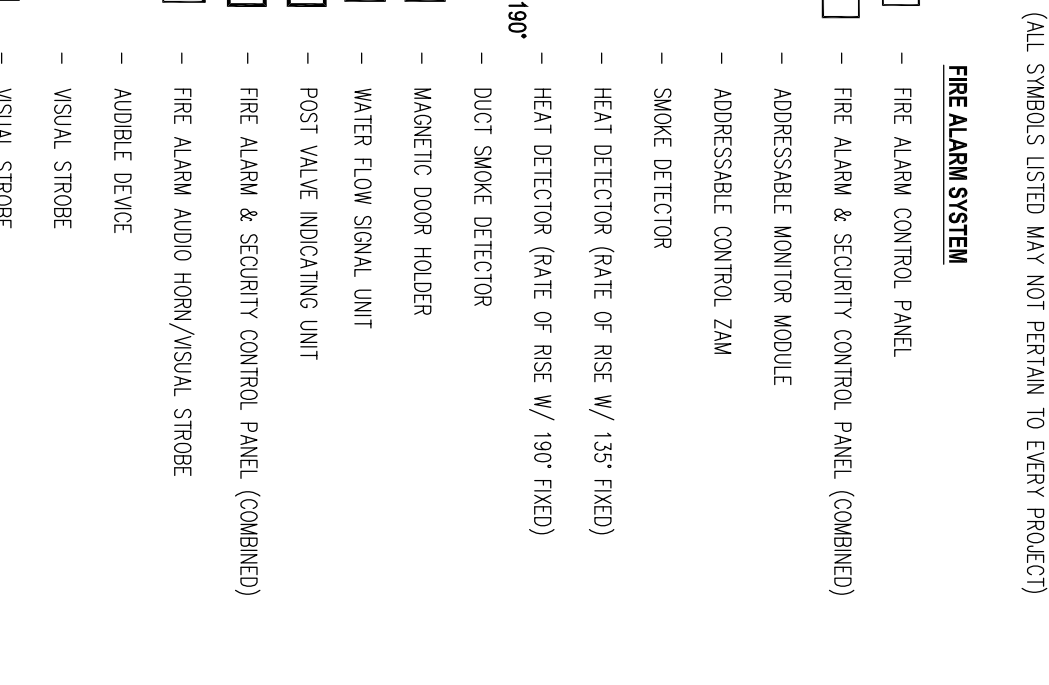
PLAN SYMBOLS CONT.



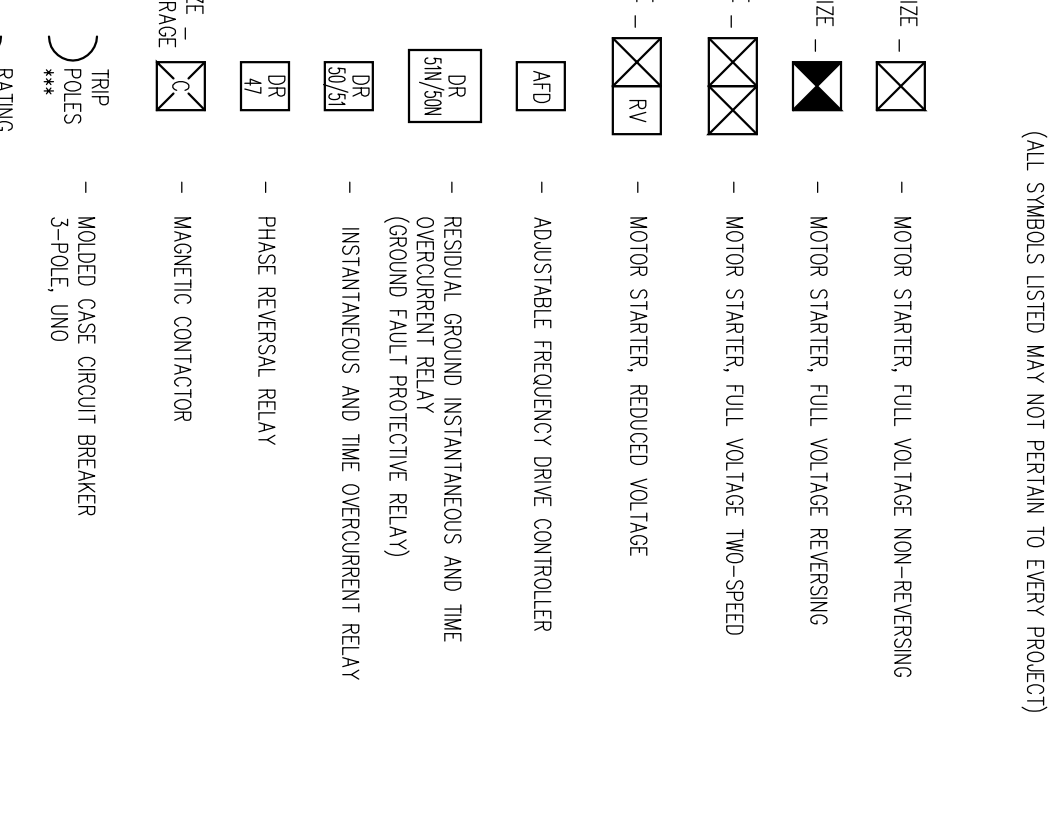
PLAN SYMBOLS CONT.



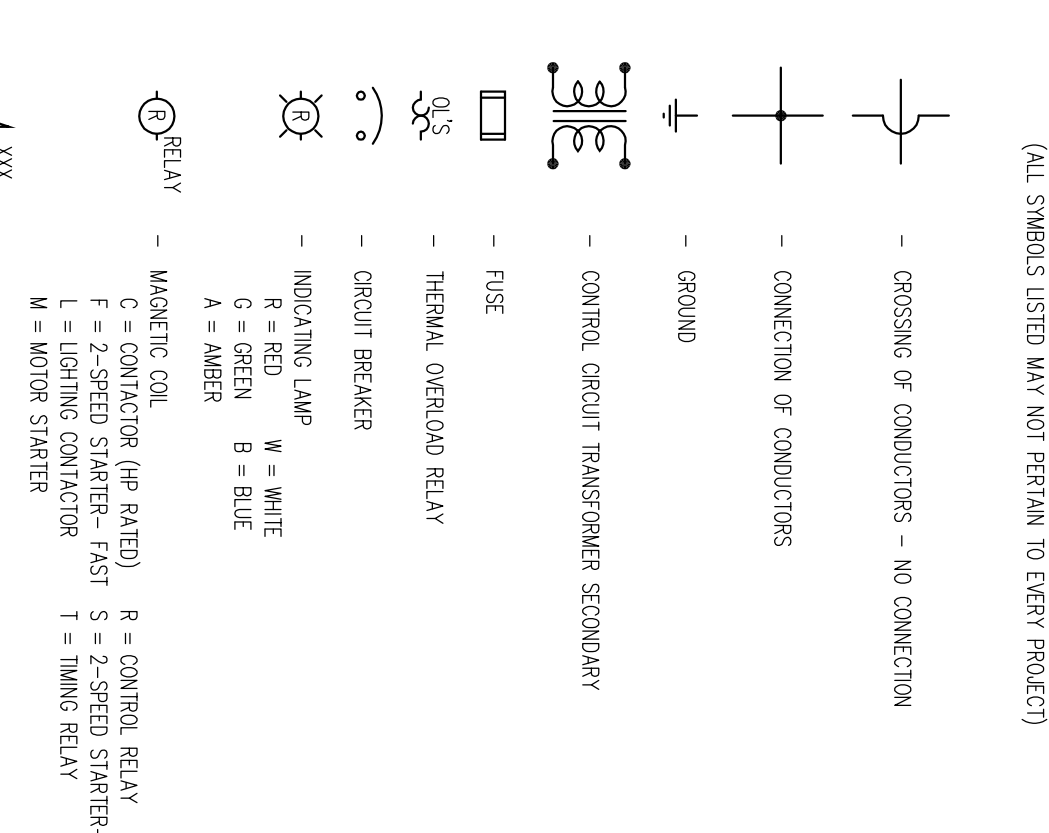
PLAN SYMBOLS CONT.



SINGLE-LINE DIAGRAM SYMBOLS



ELEMENTARY DIAGRAM SYMBOLS



ABBREVIATIONS

- List of abbreviations for electrical components and materials, such as 'AFR - ABOVE FINISHED FLOOR' and 'ALU - ALUMINUM'.

GENERAL NOTES

- General notes regarding equipment specifications, installation requirements, and coordination with other trades.

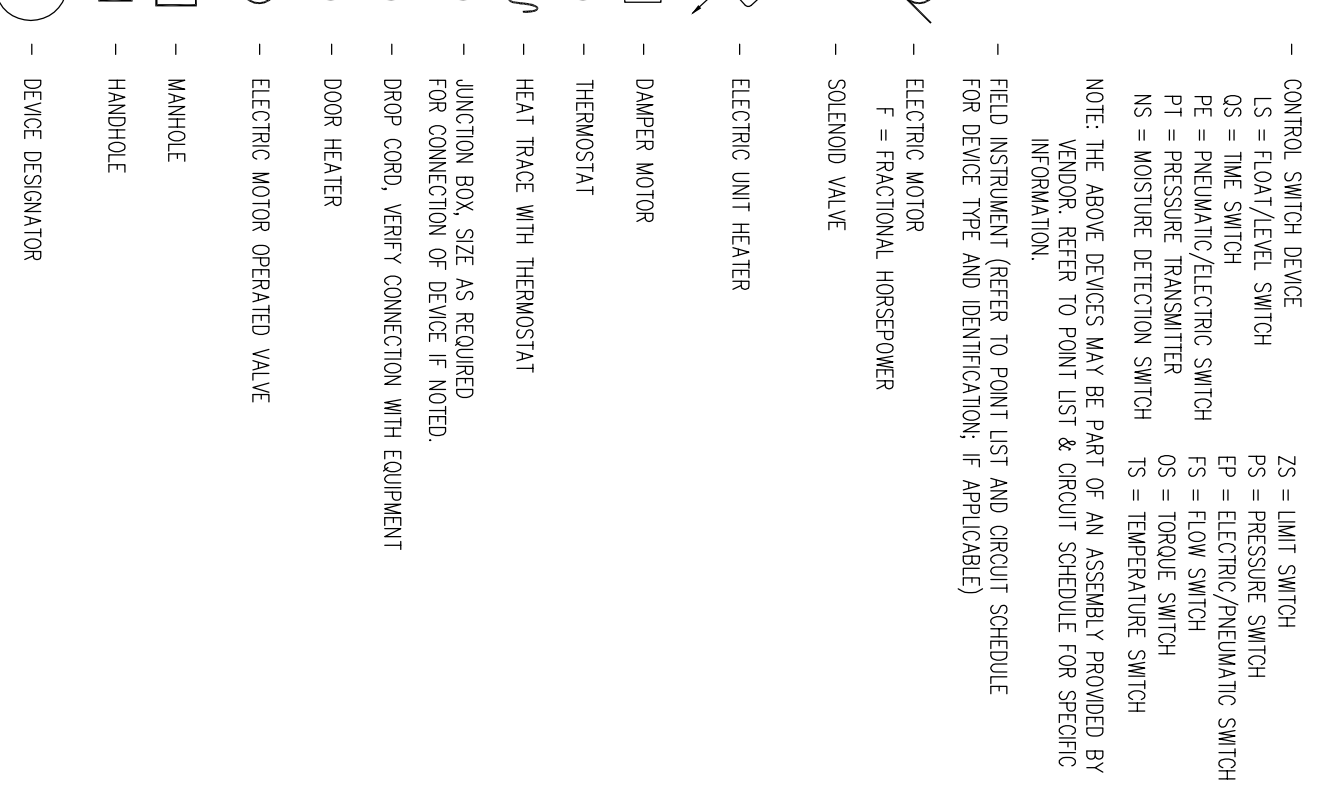
AREA CLASSIFICATION TABLE

Table with columns for Area Classification, Location, and Equipment. Lists various areas like '101 - Lobby' and '102 - Reception' with their respective classifications.

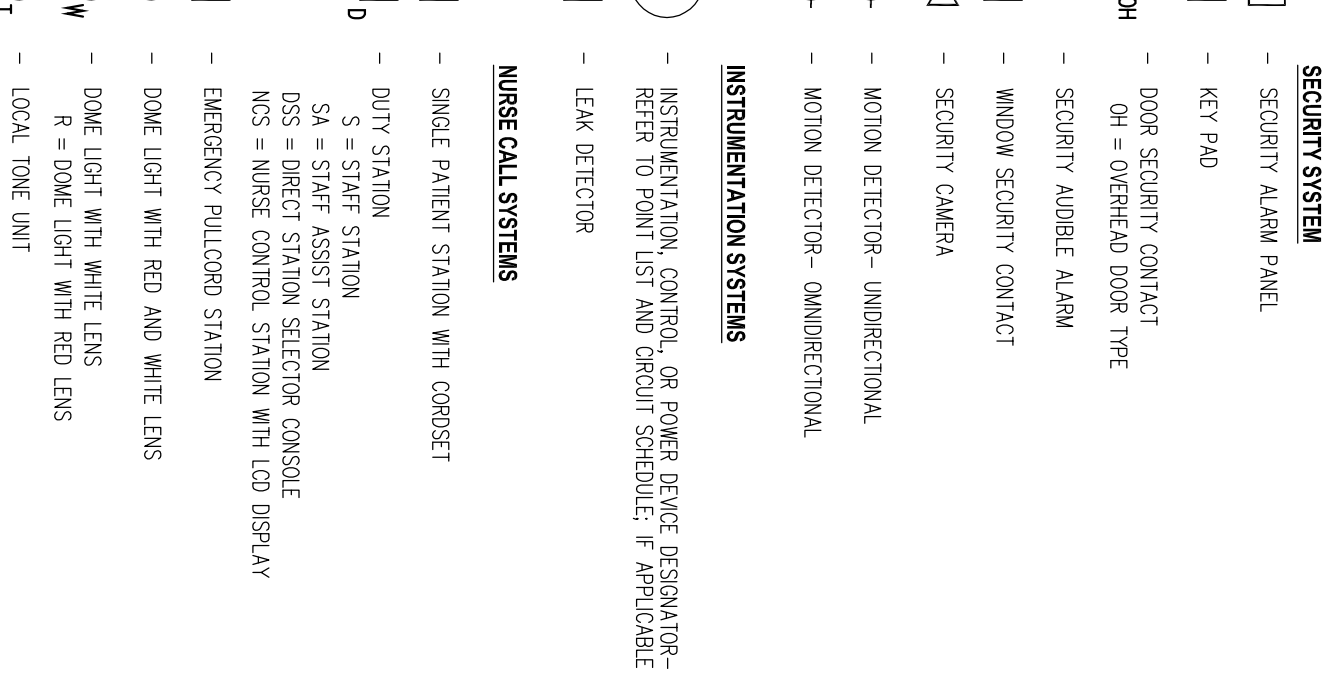
ELECTRICAL DRAWING LIST

Table listing electrical drawings such as 'E001 - SINGLE-LINE DIAGRAM & SCHEDULES' and 'E002 - ELECTRICAL SITE / OVERALL PLAN'.

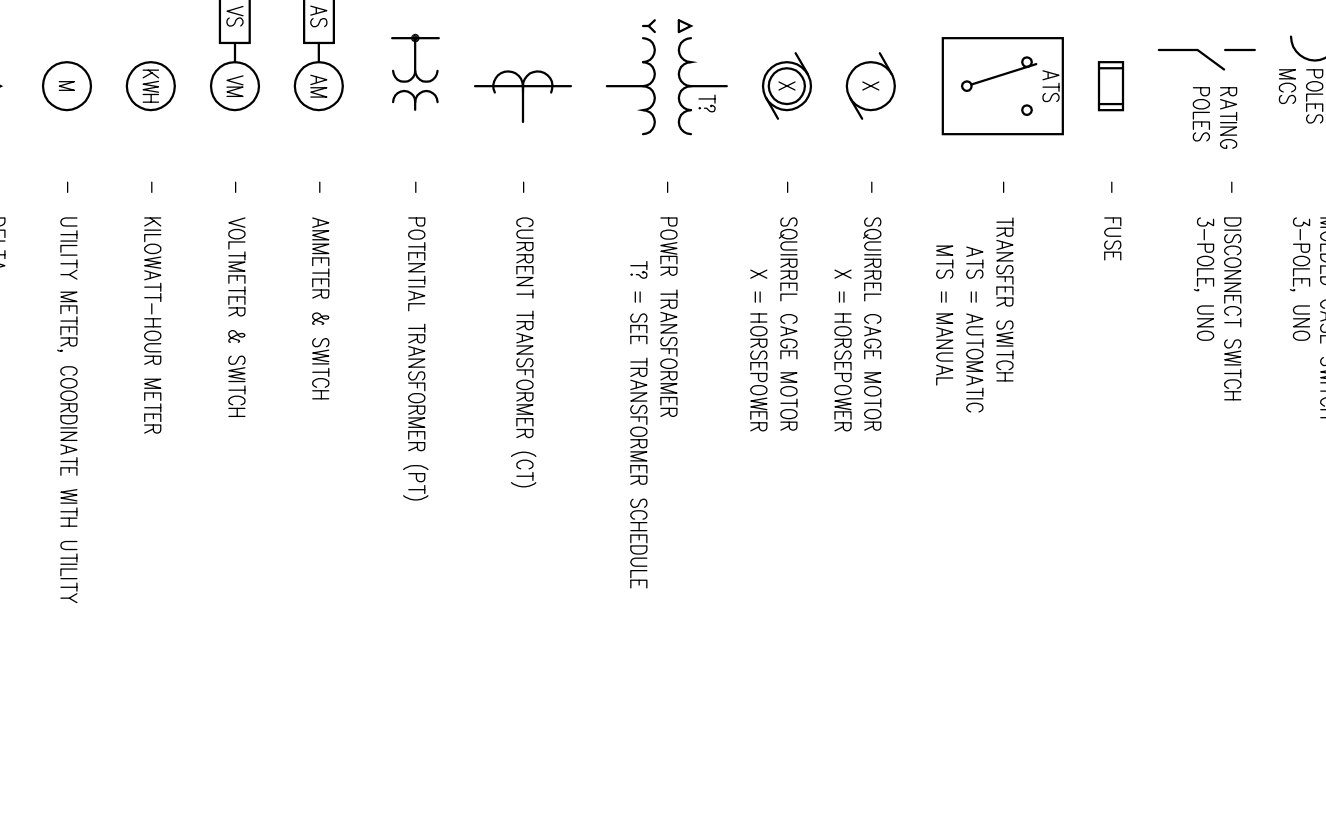
PLAN SYMBOLS CONT.



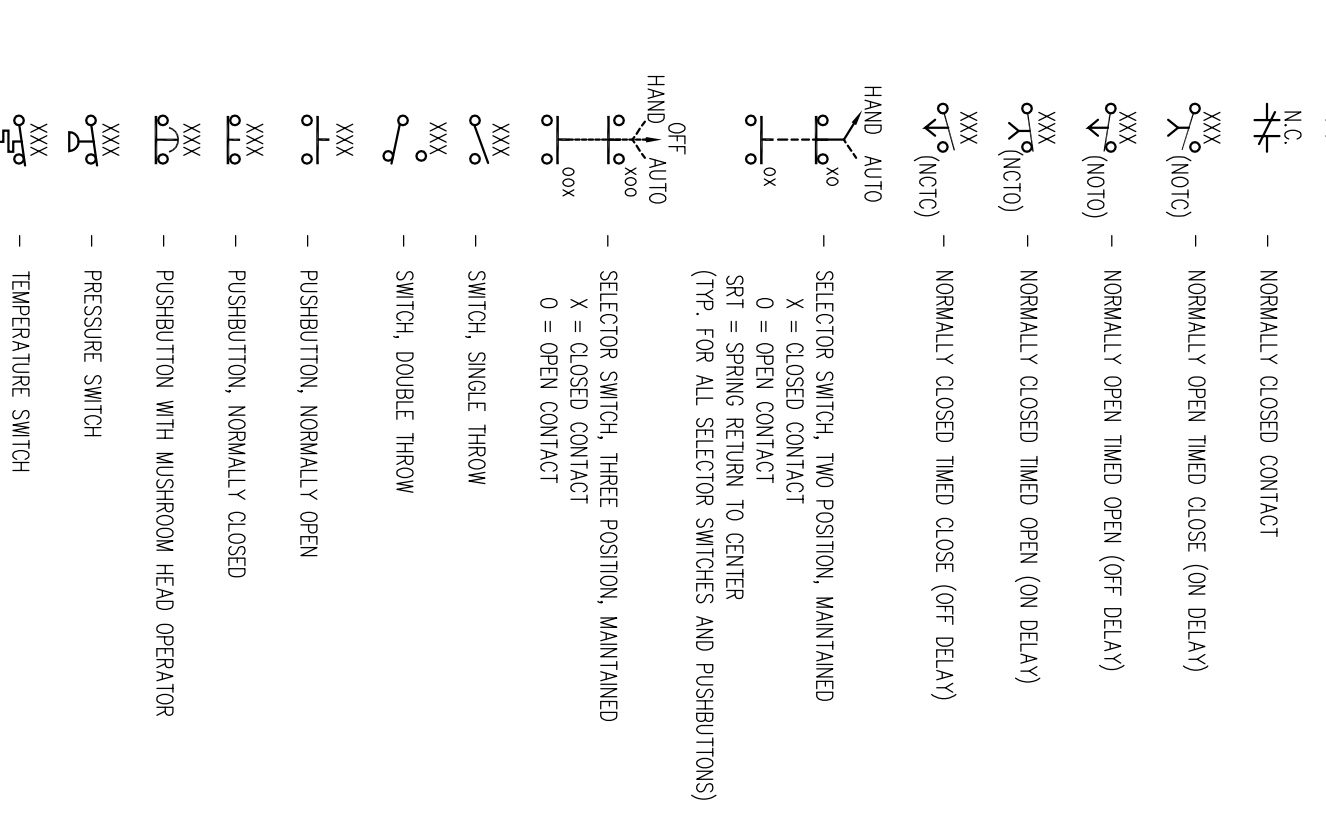
PLAN SYMBOLS CONT.



SINGLE-LINE DIAGRAM SYMBOLS



ELEMENTARY DIAGRAM SYMBOLS



ABBREVIATIONS

- List of abbreviations for electrical components and materials, such as 'AFR - ABOVE FINISHED FLOOR' and 'ALU - ALUMINUM'.

GENERAL NOTES

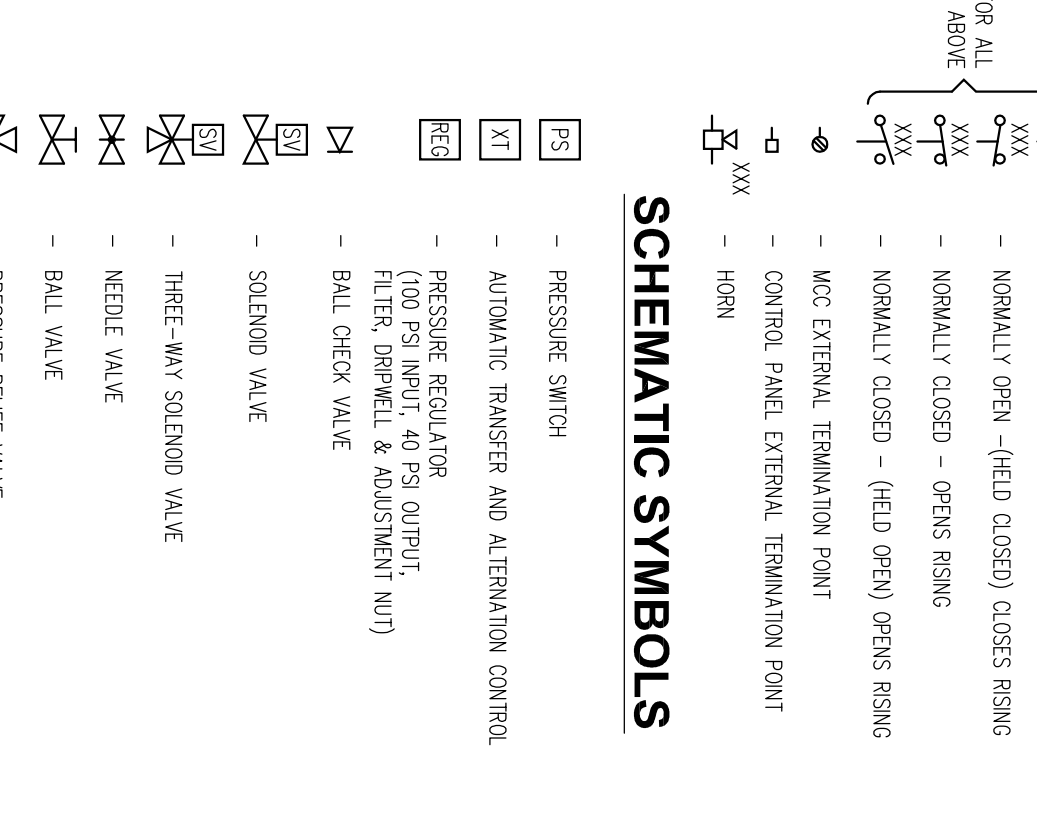
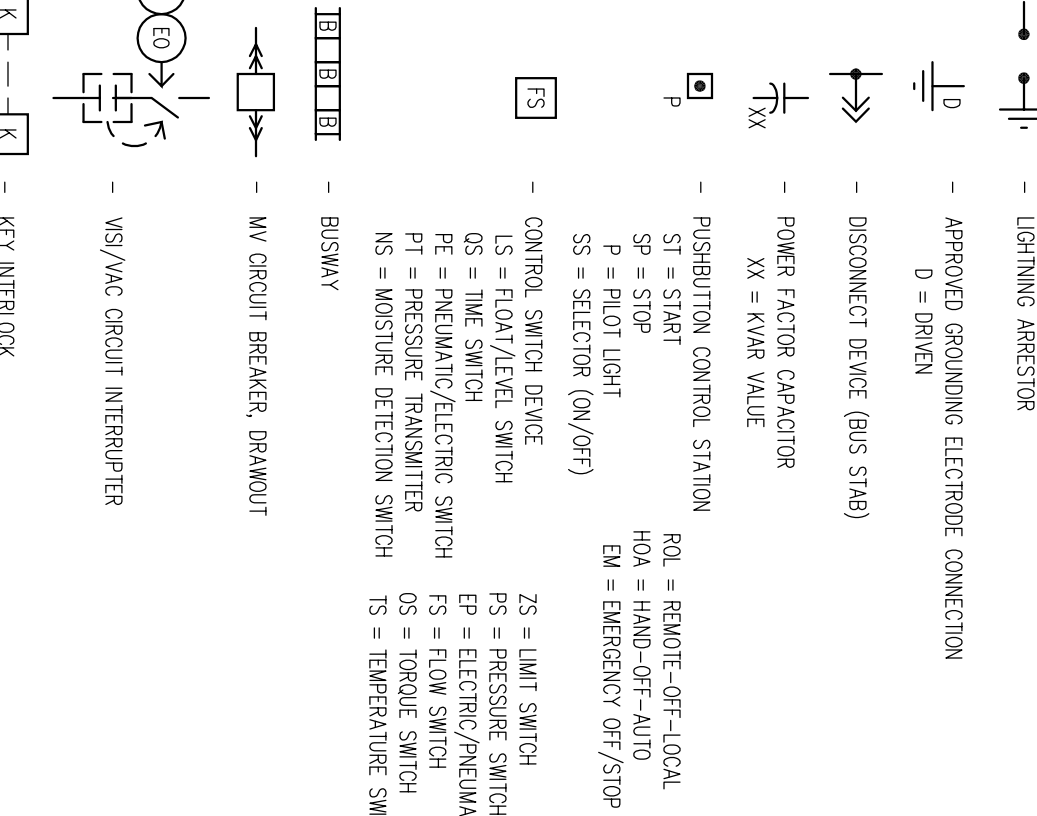
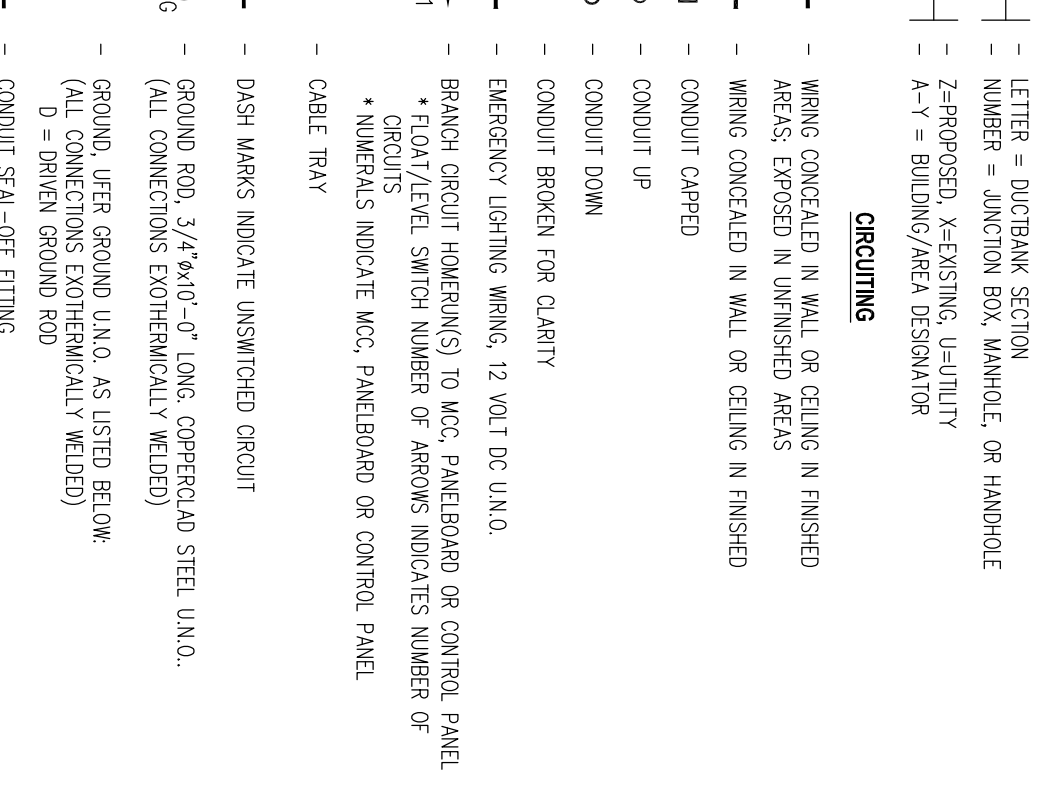
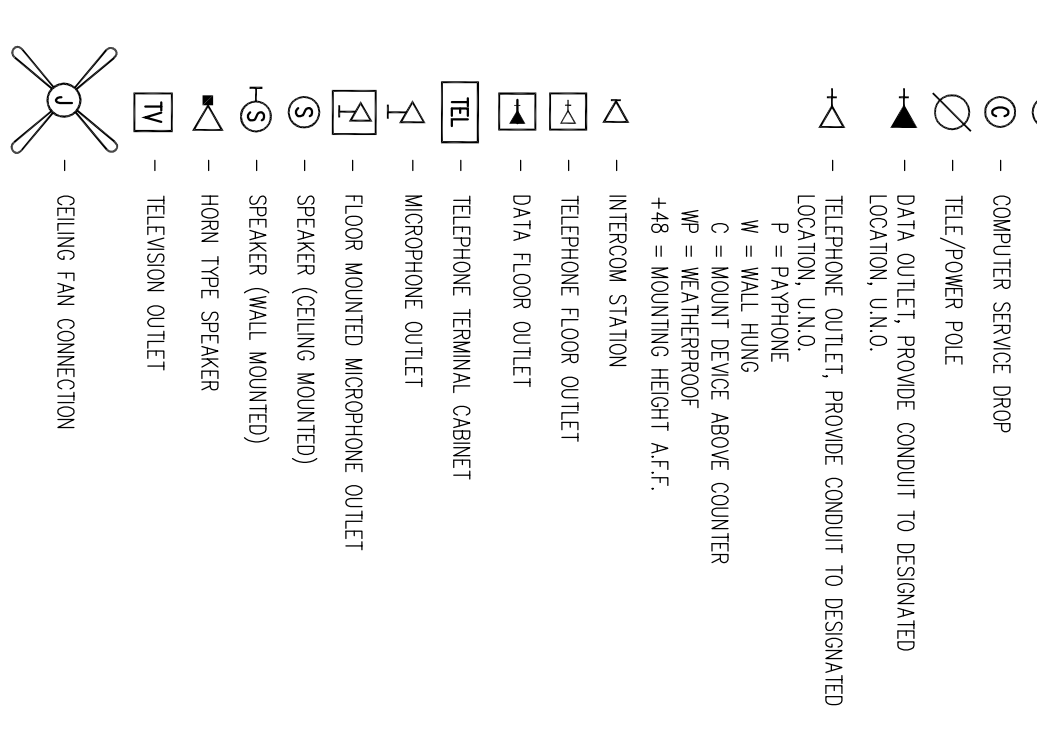
- General notes regarding equipment specifications, installation requirements, and coordination with other trades.

AREA CLASSIFICATION TABLE

Table with columns for Area Classification, Location, and Equipment. Lists various areas like '101 - Lobby' and '102 - Reception' with their respective classifications.

ELECTRICAL DRAWING LIST

Table listing electrical drawings such as 'E001 - SINGLE-LINE DIAGRAM & SCHEDULES' and 'E002 - ELECTRICAL SITE / OVERALL PLAN'.



- List of abbreviations for electrical components and materials, such as 'AFR - ABOVE FINISHED FLOOR' and 'ALU - ALUMINUM'.

- General notes regarding equipment specifications, installation requirements, and coordination with other trades.

Table with columns for Area Classification, Location, and Equipment. Lists various areas like '101 - Lobby' and '102 - Reception' with their respective classifications.

Table listing electrical drawings such as 'E001 - SINGLE-LINE DIAGRAM & SCHEDULES' and 'E002 - ELECTRICAL SITE / OVERALL PLAN'.

Facilities Design logo and contact information for 384 Forest Avenue, Portland, Maine 04101.

Oakhurst Dairy logo and 'NEW MILK COOLER' text.