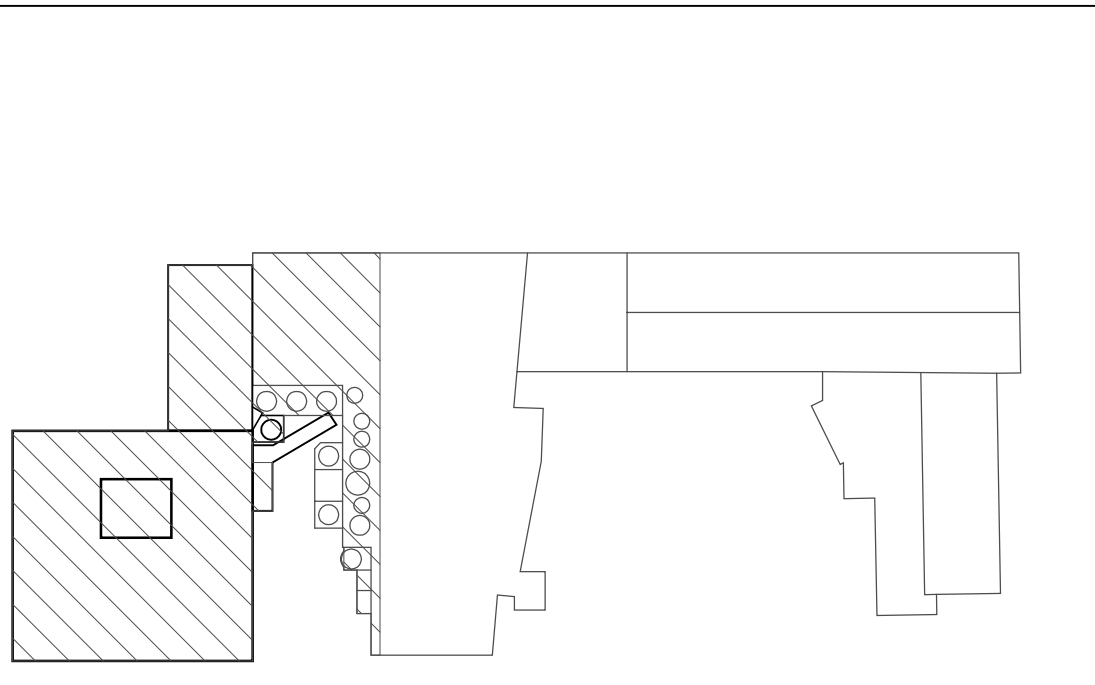


TITLE	CHARACTERISTICS	VOLTS	W-F-R	W-C-R	CATAL. CODE NUMBER	LAMP	ACCESSORIES/NOTES
A	Asymmetric Linear	277			LM150	117MM/30	
B	Asymmetric Linear	277			LM150	117MM/30	
C	Asymmetric Linear	277			LM150	117MM/30	
D	Asymmetric Linear	277			LM150	117MM/30	
E	Asymmetric Linear	277			LM150	117MM/30	
F	Asymmetric Linear	277			LM150	117MM/30	
G	Asymmetric Linear	277			LM150	117MM/30	
H	Asymmetric Linear	277			LM150	117MM/30	
I	Asymmetric Linear	277			LM150	117MM/30	
J	Asymmetric Linear	277			LM150	117MM/30	
K	Asymmetric Linear	277			LM150	117MM/30	
L	Asymmetric Linear	277			LM150	117MM/30	
M	Asymmetric Linear	277			LM150	117MM/30	
N	Asymmetric Linear	277			LM150	117MM/30	
O	Asymmetric Linear	277			LM150	117MM/30	
P	Asymmetric Linear	277			LM150	117MM/30	
Q	Asymmetric Linear	277			LM150	117MM/30	
R	Asymmetric Linear	277			LM150	117MM/30	
S	Asymmetric Linear	277			LM150	117MM/30	
T	Asymmetric Linear	277			LM150	117MM/30	
U	Asymmetric Linear	277			LM150	117MM/30	
V	Asymmetric Linear	277			LM150	117MM/30	
W	Asymmetric Linear	277			LM150	117MM/30	
X	Asymmetric Linear	277			LM150	117MM/30	

- PLAN KEY NOTE
1. PROVIDE POWER TO LIGHT/FAN COMBINATION PROVIDED BY MECHANICAL CONTRACTOR. PROVIDE INTERCONNECTING WIRING FROM WALL-MOUNTED SWITCH (PROVIDED BY EC) AND LIGHT/FAN COMBINATION. POWER FROM PANELBOARD RUL.
  2. CONNECT NIGHT LIGHTS TO PANELBOARD LP1 NIGHTLIGHT CIRCUIT.
  3. POWER EXIT SIGNS AND BATTERY PAGES FROM CIRCUIT IN PANELBOARD LP1.
  4. POWER BULK LIGHTS FROM CONVENIENCE RECEPTACLES SHOWN ON DRAWING EX-10.
  5. PROVIDE PHOTOELECTRIC RELAY TO CONTROL DOCK CANOPY LIGHTS MOUNT ABOVE END OF CANOPY FACING NORTH.
  6. REFER TO DRAWING 'EX-1' FOR SECOND FLOOR & REINFORCED LIGHTING PLANS.
  7. LIGHT FIXTURE 'T' TO BE HUNG LEVEL WITH BOTTOM OF AU-5 & AU-6.
  8. MOUNT TYPE 'C' FIXTURES AS HIGH AS POSSIBLE, AT EDGE OF AISLE AWAY FROM FACE. COORDINATE EXACT LOCATION WITH RACK STRUCTURE.
  9. SPRINKLER SYSTEM CONTRACTOR.
  10. MOUNT EXISTING 6" ABOVE STAIR LANDING.
  11. MOUNT EMERGENCY LIGHTING FIXTURE 6" 6" AFT.
  12. MOUNT EMERGENCY LIGHTING FIXTURE 7' 6" AFT.
  13. MOUNT EMERGENCY LIGHTING FIXTURE 10' AFT.
  14. MOUNT EMERGENCY LIGHTING FIXTURE 30' AFT.
  15. ALTERNATELY GUEST AISLE LIGHTS FROM CONVENIENCE AS SHOWN. GUEST SHALL LOWER THAN BOTTOM CHORD OF JOIST.



KEY PLAN

ELECTRICAL LIGHTING PLAN

<p><b>PROJECT:</b> NEW MILK COOLER</p> <p><b>CLIENT:</b> OAKHURST DAIRY</p> <p>364 FOREST AVENUE PORTLAND, MAINE 04101</p> <p><b>DATE:</b> AUGUST 29, 2003</p> <p><b>PROJECT NUMBER:</b> 2003.1141.0</p>	<p><b>DESIGNED BY:</b> CEL</p> <p><b>DRAWN BY:</b> MALL</p> <p><b>CHECKED BY:</b> MALL/WRS</p> <p><b>PROJECT NUMBER:</b> E300</p> <p><b>REVISIONS:</b> 0</p>	<p><b>FACILITIES DESIGN, INC.</b></p> <p>3904 Abel Drive Columbia, Pennsylvania 17512 Phone: (717) 862-3142 Fax: (717) 862-3144 Email: info@facilitiesdesign.com Web: www.facilitiesdesign.com</p> <p>CA. NUMBER: 20031119</p> <p><b>Engineering Design Services</b></p> <p>Architectural Engineering Foundation &amp; Structural Interior Design Process Relocation Material Storage Lighting Power Distribution Mechanical Process Heating</p> <p><b>Project Services</b></p> <p>Project Planning Design Management Construction Management Facilities Planning Material Handling System Studies</p>
--	--	--