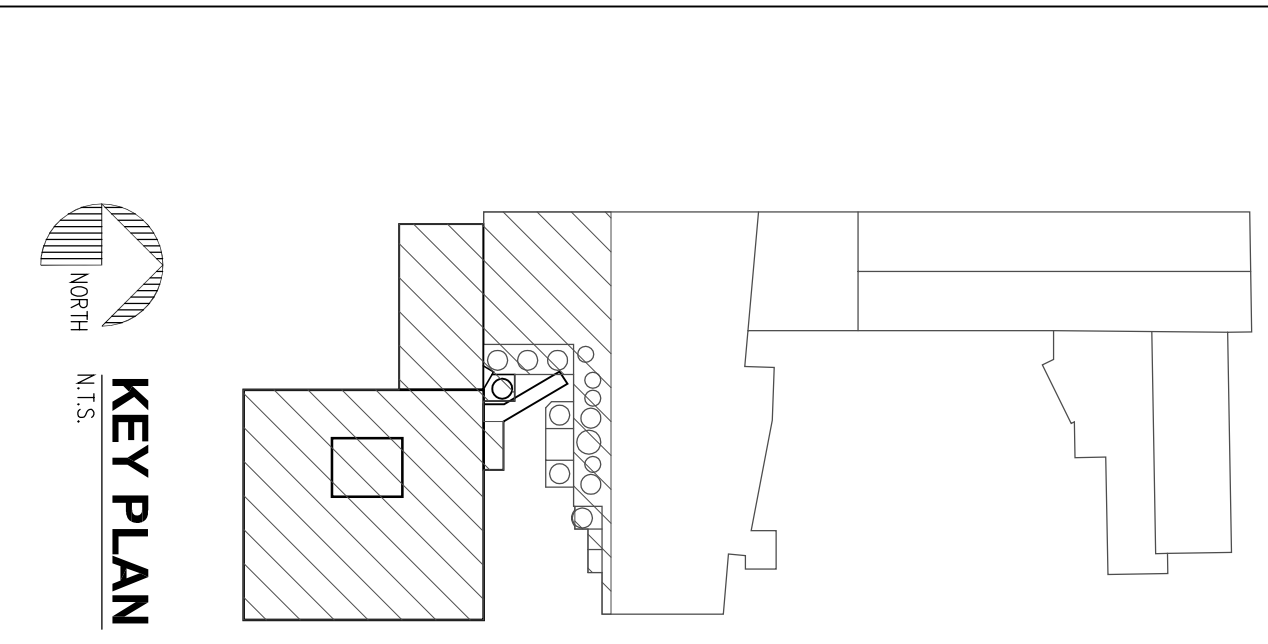


SITE/OVERALL PLAN
SCALE: 1/8" = 1'-0"



KEY PLAN

- PLAN KEY NOTE
- SEE DRAWING B200 FOR EXACT MOUNTING LOCATION.
 - MOUNT AT 4'0" A.F.C.
 - MOUNT AT 1'0" A.F.C. IF BRACKET WARES, MOUNT ADJACENT EXTERIOR AT THE SAME HEIGHT.
 - PROVIDE CONDUIT AND CONDUCTORS PER WIRE KEY AND DUCT BANK DETAIL FOR P40-MOUNT TRANSFORMER IS ONLY APPROXIMATE. COORDINATE THE FOUNDATION, DUCT BANK BENCH, THE BUILDING WITH INSTALLATION OF THE FOUNDATION.
 - REFER TO DRAWING "E201" FOR SECOND FLOOR & PENHOUSE LIGHTING PLAN.
 - PROVIDE FIRE SEAL FOR PENETRATIONS THROUGH ONE-HOUR RATED FIRE WALL.
 - FOR REFERENCE, THE TRANSFORMER P40 S TO BE INSTALLED PER ILLUSTRATIONS NO. 21 AND 25, PAGE 304, 344-8 AND 344-9.
 - TRANSFORMER, P40, PENHOUSE CONDUIT, WARE AND ALL RELATED GEAR EQUIPMENT WILL BE PROVIDED BY THE OWNER UNDER SEPARATE CONTRACT.

FACILITIES DESIGN, INC.
3904 Abel Drive
Columbic, Pennsylvania 17512
Phone: (717) 282-3100
Fax: (717) 282-3104
Email: info@facilitiesdesign.com
Web: www.facilitiesdesign.com
CA NUMBER: 20021119

Engineering Design Services
Architectural Engineering
Foundation & Structural
General Building
Interior Design
Control Refrigeration & Thermal Storage
Lighting & Power Distribution & Controls
Mechanical Heating
Process Heating
Project Planning & Project Management
Feasibility Studies
Material Handling System Studies

REVISIONS	DATE	BY	DESCRIPTION
0	08/29/03		ISSUED FOR BIDDING
1	07/21/03		ISSUED FOR OWNER REVIEW

This drawing and all specifications contained herein remain the property of FACILITIES DESIGN, INC. All rights are expressly reserved in whole or in part without the express written consent of FACILITIES DESIGN, INC.

Do not scale drawings. Contractor shall verify all dimensions and conditions prior to construction. All dimensions shall be consistent to FACILITIES DESIGN, INC. prior to construction for resolution.

PROJECT MANAGER: SEAL
DESIGNED BY: CEJA
DRAWN BY: MRL
CHECKED BY: MCH/MSRS

NEW MILK COOLER

Oakhurst DAIRY

364 FOREST AVENUE
PORTLAND, MAINE 04101

PROJECT NUMBER: 2003.1141.0

DATE: AUGUST 29, 2003

DRAWING TITLE: ELECTRICAL SITE/OVERALL PLAN

DRAWING NUMBER: E200

REVISION: 0