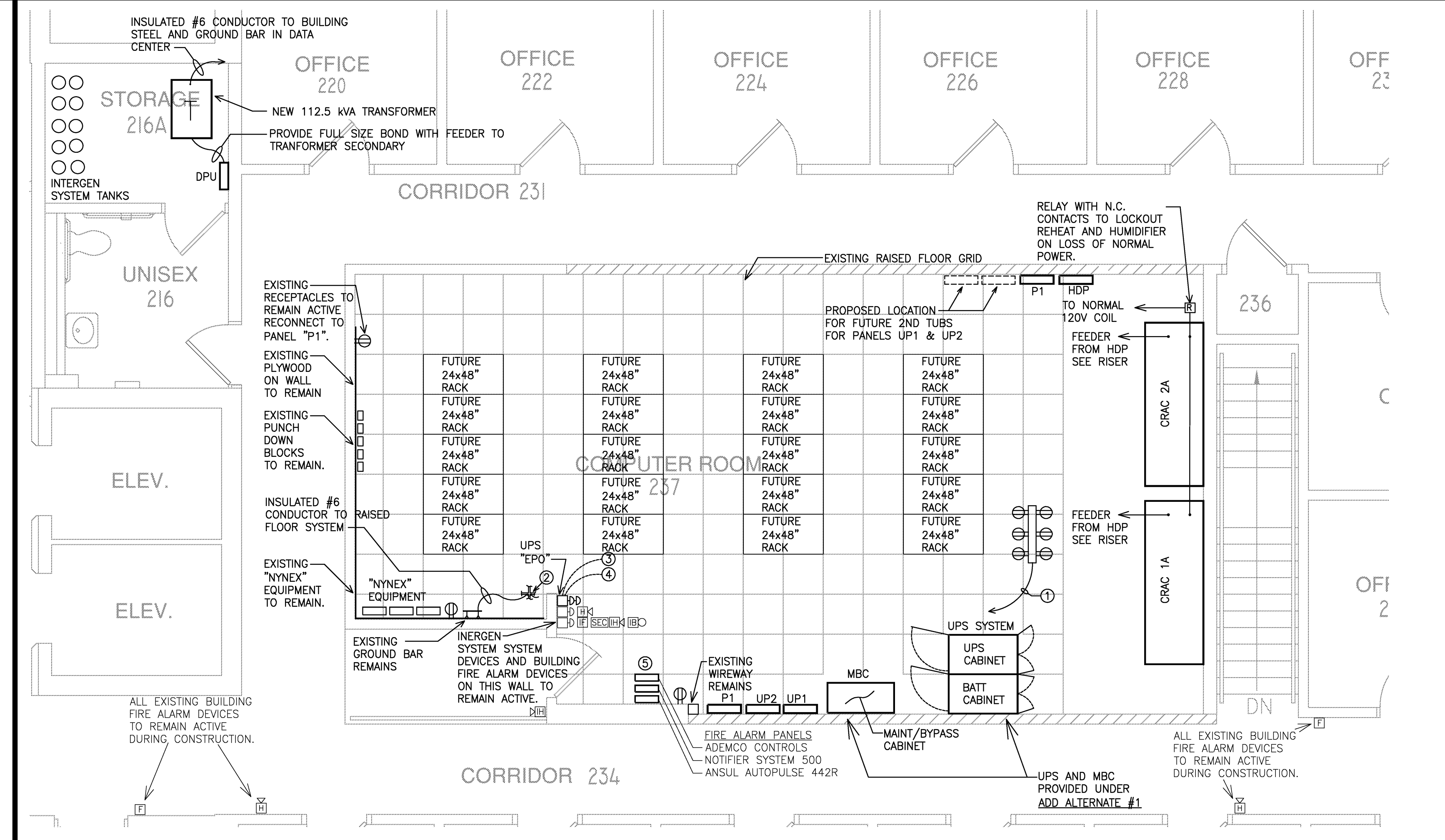
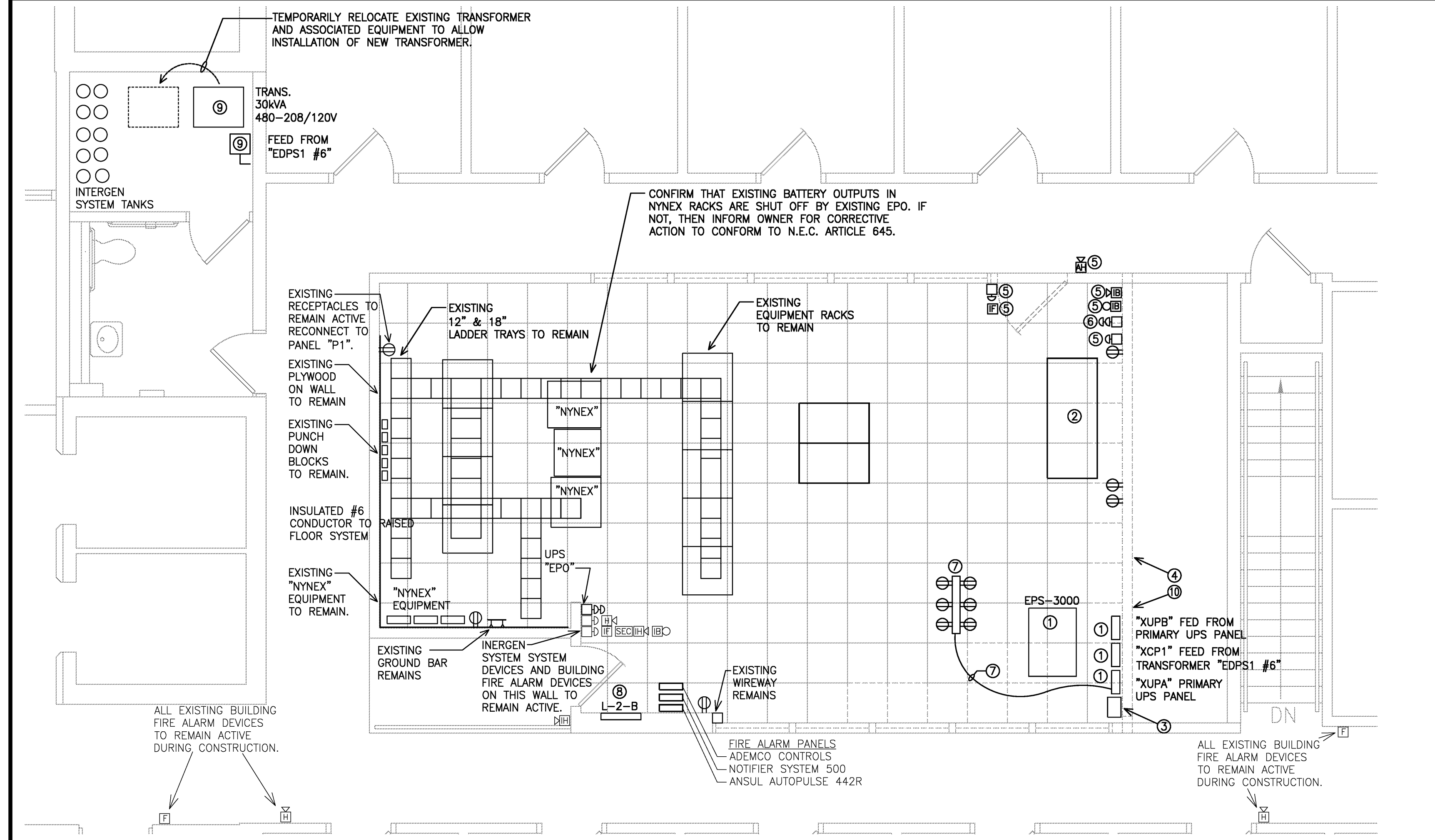


LIGHTING EXISTING CONDITIONS KEY NOTES

- ① REMOVE EXISTING LIGHTING AND CONDUCTORS. EXISTING SWITCHES AND CONDUIT SWITCH BACKBOXES CAN REMAIN FOR USE IN NEW WORK.
- ② REMOVE/REINSTALL EXISTING CAMERAS AND ASSOCIATED CEILING MOUNTED DEVICES. REINSTALL AND TEST AFTER NEW CEILING IS INSTALLED. COORDINATE WITH OTHER TRADES.
- ③ INERGEN SYSTEM SMOKE DETECTORS REMOVED BY DIVISION 21.
- ④ THREE CEILING MOUNTED AND THREE UNDERFLOOR MOUNTED BUILDING SMOKE DETECTORS SHALL REMAIN FUNCTIONAL DURING CONSTRUCTION. PROVIDE TEMPORARY BAGS TO PROTECT FROM DUST DURING WORK. REMOVE BAGS AT END OF EACH WORKDAY TO ASSURE PROPER OPERATION.

LIGHTING - EXISTING CONDITIONS - PARTIAL PLAN
1/4" = 1'-0" REF: NA **A4**

LIGHTING - NEW WORK - PARTIAL PLAN
1/4" = 1'-0" REF: NA **A3**



POWER & SYSTEMS EXISTING CONDITIONS KEY NOTES

- ① EXISTING UPS SYSTEM AND ASSOCIATED WIRING TO BE REMOVED ONLY AFTER NEW SYSTEM HAS BEEN INSTALLED. RETURN EQUIPMENT TO OWNER.
- ② EXISTING HVAC UNIT SHALL REMAIN ONLINE.
- ③ REMOVE EXISTING CIRCUIT BREAKER CABINET.
- ④ WALL TO BE REMOVED. REMOVE ALL RECEPTACLES, CONDUIT AND CONDUCTORS BACK TO SOURCE.
- ⑤ EXISTING "INERGEN" HORN/STROBES, FIRE PULLS AND EQUIPMENT TO BE REMOVED BY DIVISION 21.
- ⑥ REMOVE EXISTING UPS SYSTEM EMERGENCY OFF PUSHBUTTONS, CONDUIT AND CONDUCTORS BACK TO SOURCE. COORDINATE WITH NEW WORK.
- ⑦ TYPICAL EXISTING UNDERFLOOR WIRING AND RECEPTACLES TO REMAIN. VERIFY QUANTITY. EXISTING "WHIPS" FROM EXISTING PANELS TO BE REUSED AND/OR EXTENDED TO NEW PANELS. COORDINATE THE REMOVAL/REINSTALLATION WITH "NETWORKMAINE".
- ⑧ REMOVE EXISTING BREAKERS IN PANEL "L2B" AND REMOVE CONDUCTORS BACK TO SOURCE, CLOSE COVER AND LOCK. EXISTING CIRCUITS TO BE RECONNECTED TO PANELS IN NEW WORK. COORDINATE TO REFINISH THE WALLS. CAP CONDUITS.
- ⑨ REMOVE EXISTING DISCONNECT, TRANSFORMER AND CONDUCTORS BACK TO SOURCE.
- ⑩ EXISTING 'B' SECTION OF WALL AND EXISTING UPS AND PANELBOARDS TO REMAIN IN SERVICE DURING CONSTRUCTION. COORDINATE WITH NEW WORK.

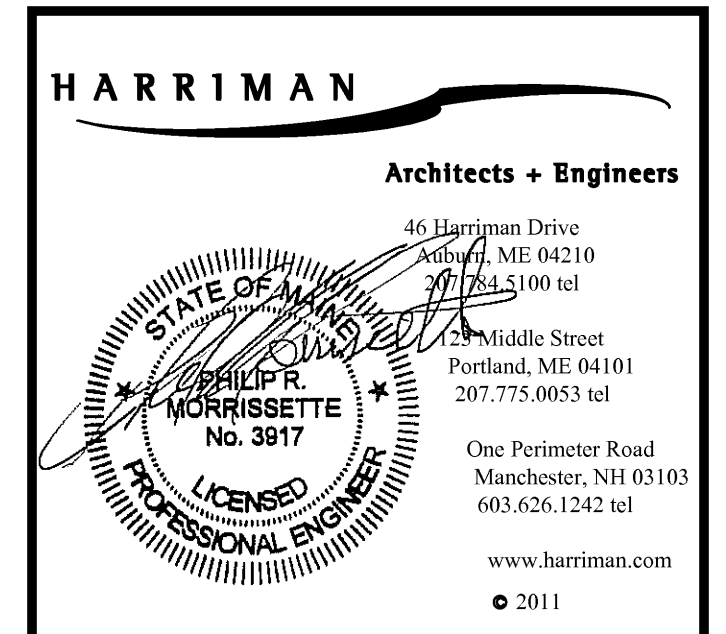
POWER & SYSTEMS NEW WORK KEY NOTES

- ① REUSE/EXTEND EXISTING "WHIPS" FROM EXISTING UNDERFLOOR WIREWAYS TO NEW PANELS "UP1" AND "UP2". FUTURE NEW CONNECTIONS TO UNDERFLOOR DEVICES AND NEW RACKS BY OWNER.
- ② PROVIDE INSULATED, GREEN #6 CONDUCTOR BOND TO RAISED FLOOR AND JUMPER ACROSS FLOOR CONNECTIONS. TYPICAL FOR ENTIRE LENGTH OF ROOM.
- ③ EMERGENCY POWER OFF "EPO". PROVIDE CONNECTION TO TRIP BATTERY OUTPUT ON UPS AND "DPU" BRANCH BREAKERS FOR UPS AND PANEL "P1".
- ④ EMERGENCY POWER OFF "EPO". PROVIDE CONNECTION TO SHUNT TRIP BREAKER IN PANEL "P1".
- ⑤ FIRE ALARM, ADEMCO, NOTIFIER AND ANSUL PANELS TO REMAIN ACTIVE.

PROJECT NOTES:
 1. ALL WORK IN THE DATA CENTER SHALL BE COORDINATED WITH "NETWORKMAINE" DEPARTMENT OF THE UNIVERSITY OF MAINE SYSTEM.
 2. PROJECT SHALL BE COMPLETED WITH MINIMUM OF DOWNTIME OF NETWORK RACKS.
 3. TYPICAL SCHEDULING OF DOWNTIME SHALL BE WEDNESDAY BETWEEN 5-6:30AM OR SUNDAY 5-10AM OR AS SCHEDULED WITH "NETWORKMAINE".

POWER & SYSTEMS - EXISTING CONDITIONS - PARTIAL PLAN
1/4" = 1'-0" REF: NA **A2**

POWER & SYSTEMS - NEW WORK - PARTIAL PLAN
1/4" = 1'-0" REF: NA **A1**



Project Title
UNIVERSITY OF MAINE SYSTEM DATA CENTER UPGRADES
 Portland, Maine

HA Project No. **09533**
 Key Plan

Mark	Date	Description
05-09-2011		ISSUED FOR BID
04-05-2011		ISSUED FOR 100% REVIEW
01-24-2011		ISSUED FOR 75% REVIEW
		Issue Dates

Drawing Status

Drawing Title
ELECTRICAL DEMOLITION & NEW WORK SECOND FLOOR PLAN

PA / PE: PRM Drawn By: RJB
 Drawing Number

E10.0