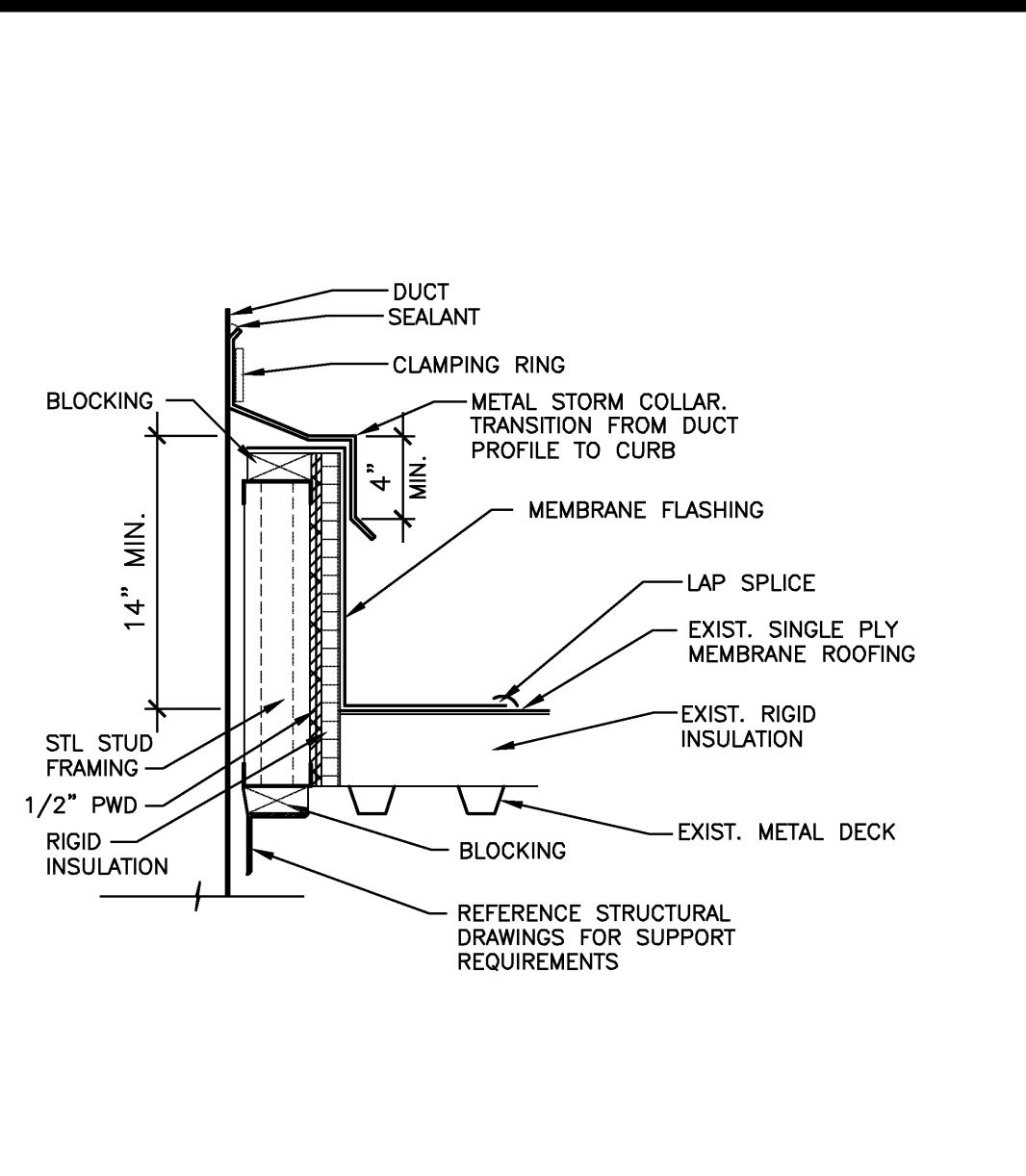
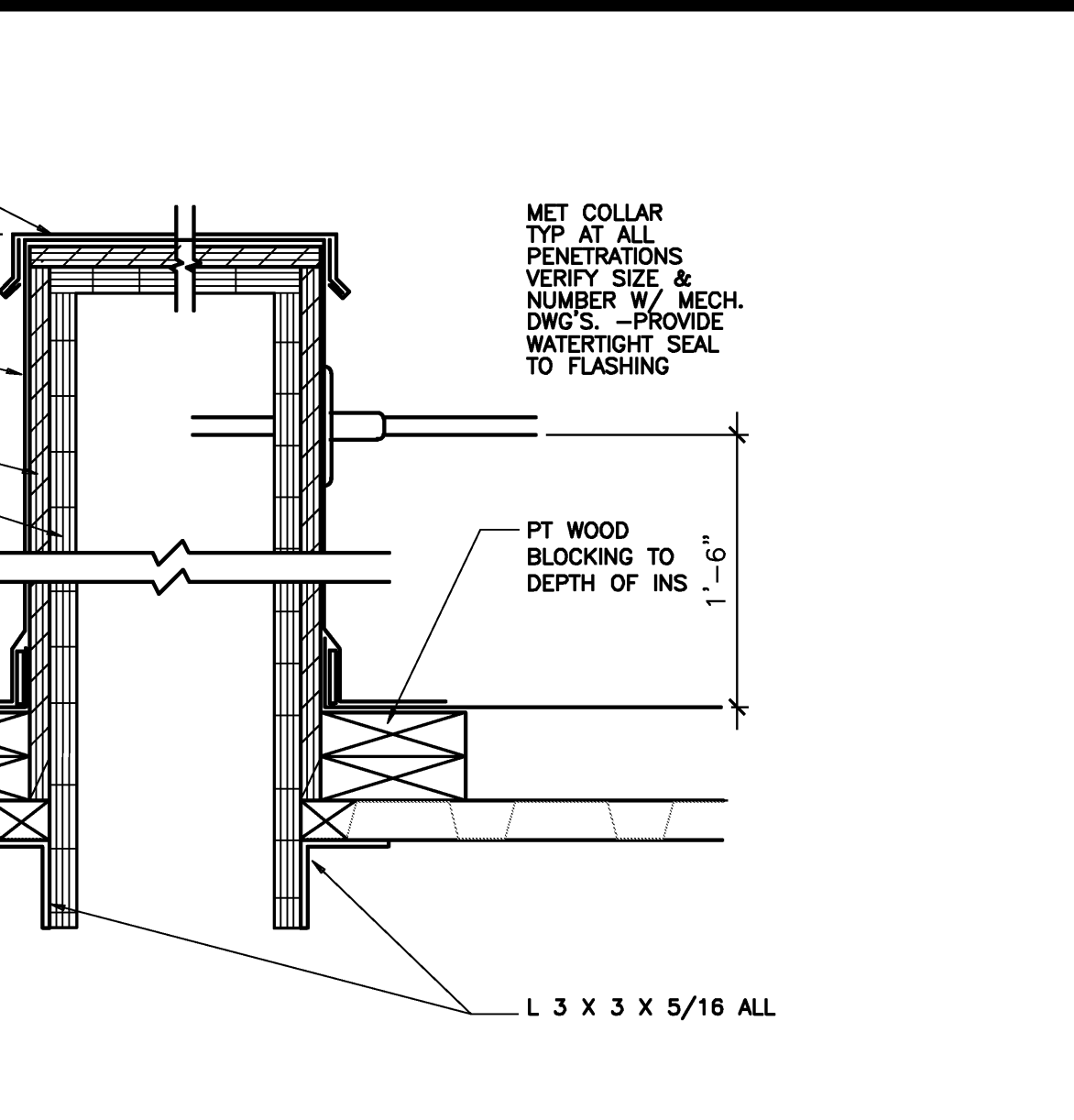


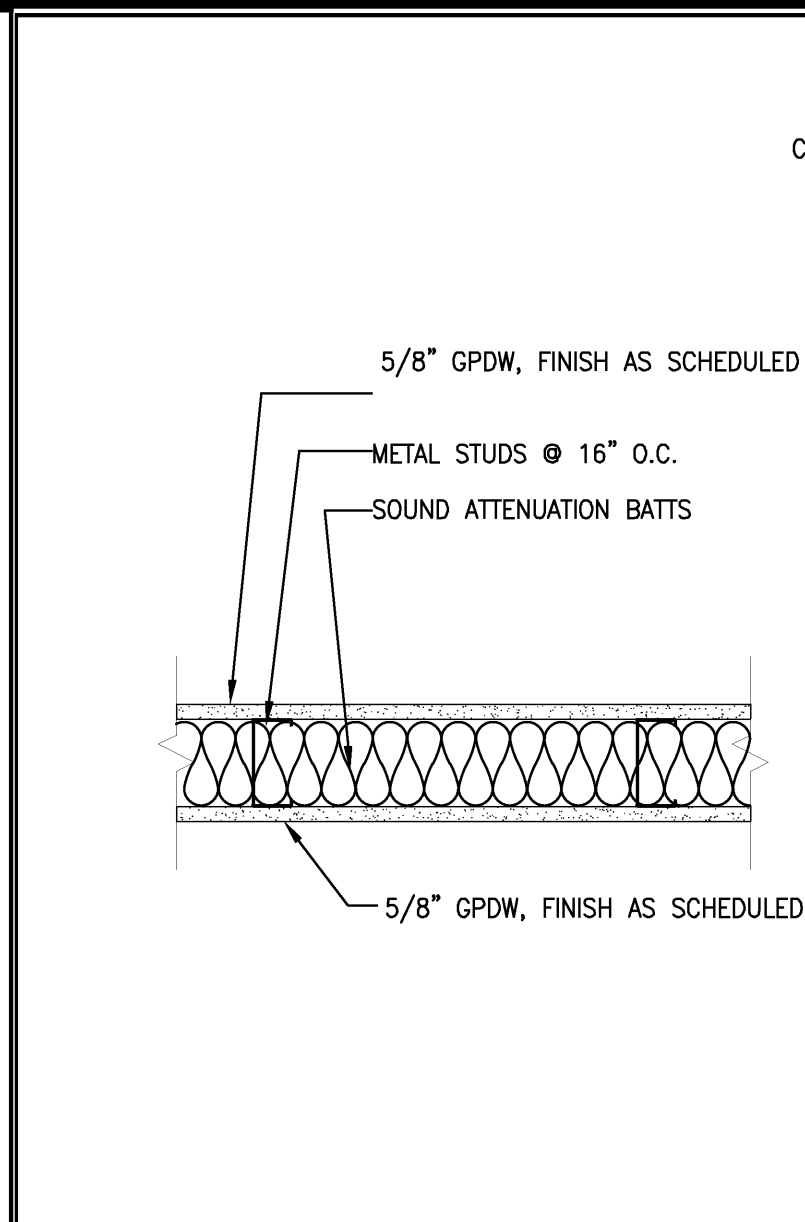
DUCT PENETRATION DETAIL
 1 1/2" = 1'-0" REF: C4



PIPE BOX DETAIL
 1 1/2" = 1'-0" REF: C3



SECTION
 3 5/8\"/>



GENERAL NOTES

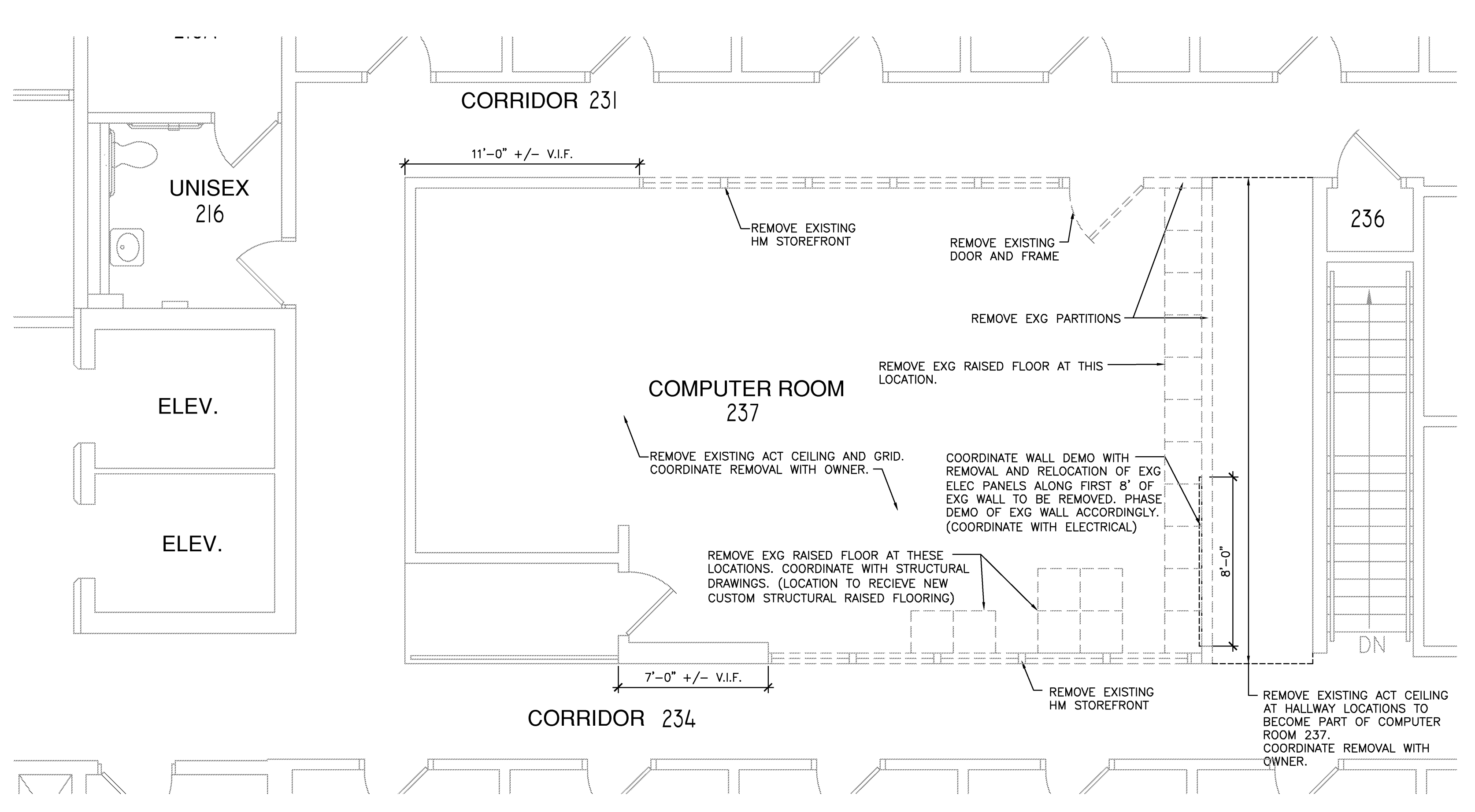
1. EXTEND PARTITIONS TO UNDERSIDE OF FLOOR/ROOF DECK U.N.O., SEAL TO DECK FOR SMOKE AND SOUND CONTROL, FILL VOIDS BETWEEN.
2. WHERE OCCURS, FRAME GWB AROUND BOTH SIDERS OF BEAMS/JOISTS WHERE PARTITION INTERSECTS STRUCTURAL MEMBERS TO MAINTAIN CONTINUITY OF PARTITION TO UNDERSIDE OF DECK.
3. CONTRACTOR IS RESPONSIBLE TO VERIFY FIELD CONDITIONS WHICH MAY VARY FROM TYPICAL DETAIL SHOWN ON DRAWINGS. CONTRACTOR TO MODIFY CLOSURE DETAILS TO MEET ACTUAL CONDITIONS AND TO MAINTAIN CONTINUITY OF PARTITION FROM FLOOR TO DECK ABOVE.

STUD OR CMU SIZE
 (2) 3-5/8" STEEL STUDS W/ SAB
 1 HR FIRE RATED
 UL NO. V446

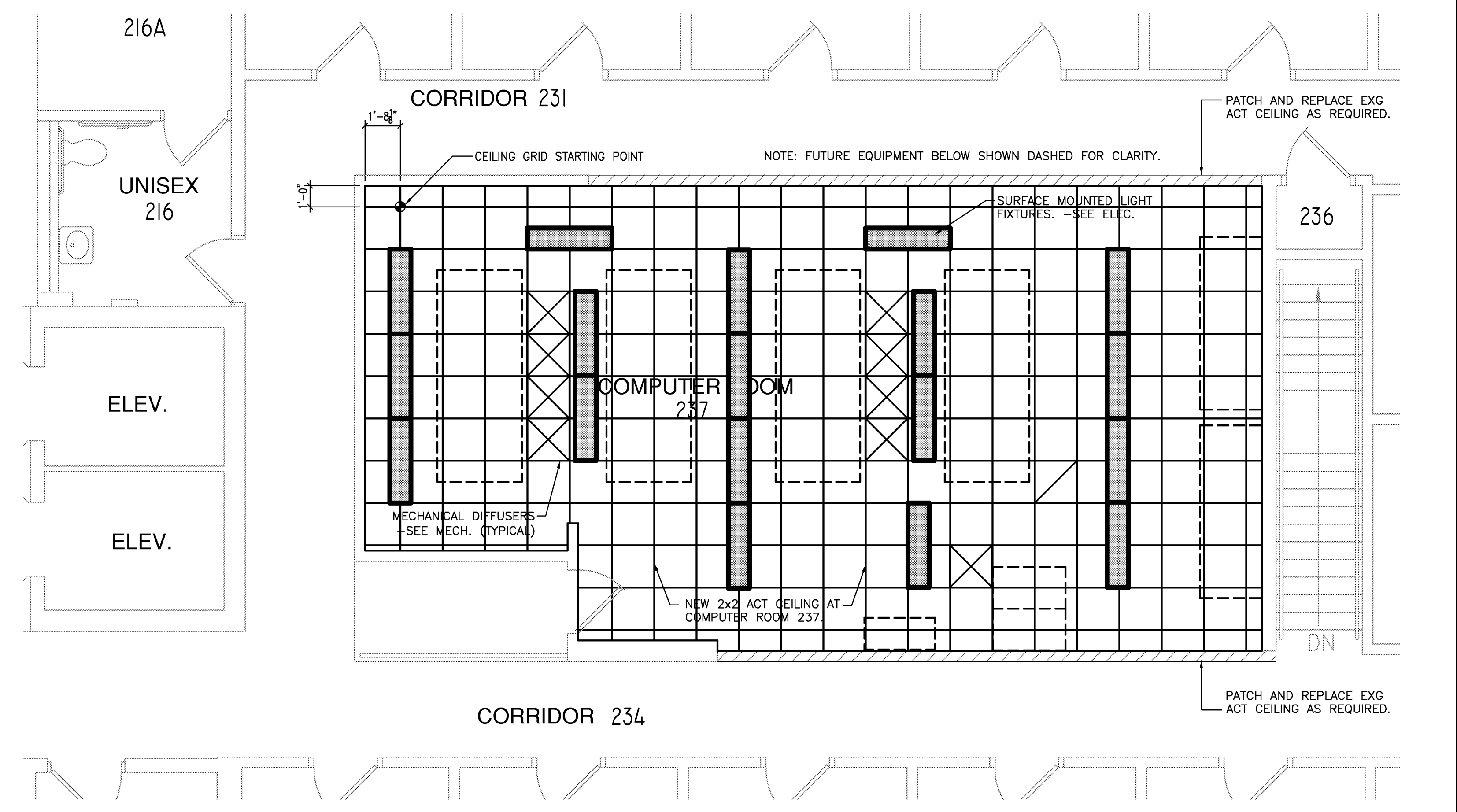
INDICATES FIRE RATING WHERE APPLICABLE
 W10

UL DESIGN NO. WHERE APPLICABLE
 PARTITION OR WALL TAG NO.

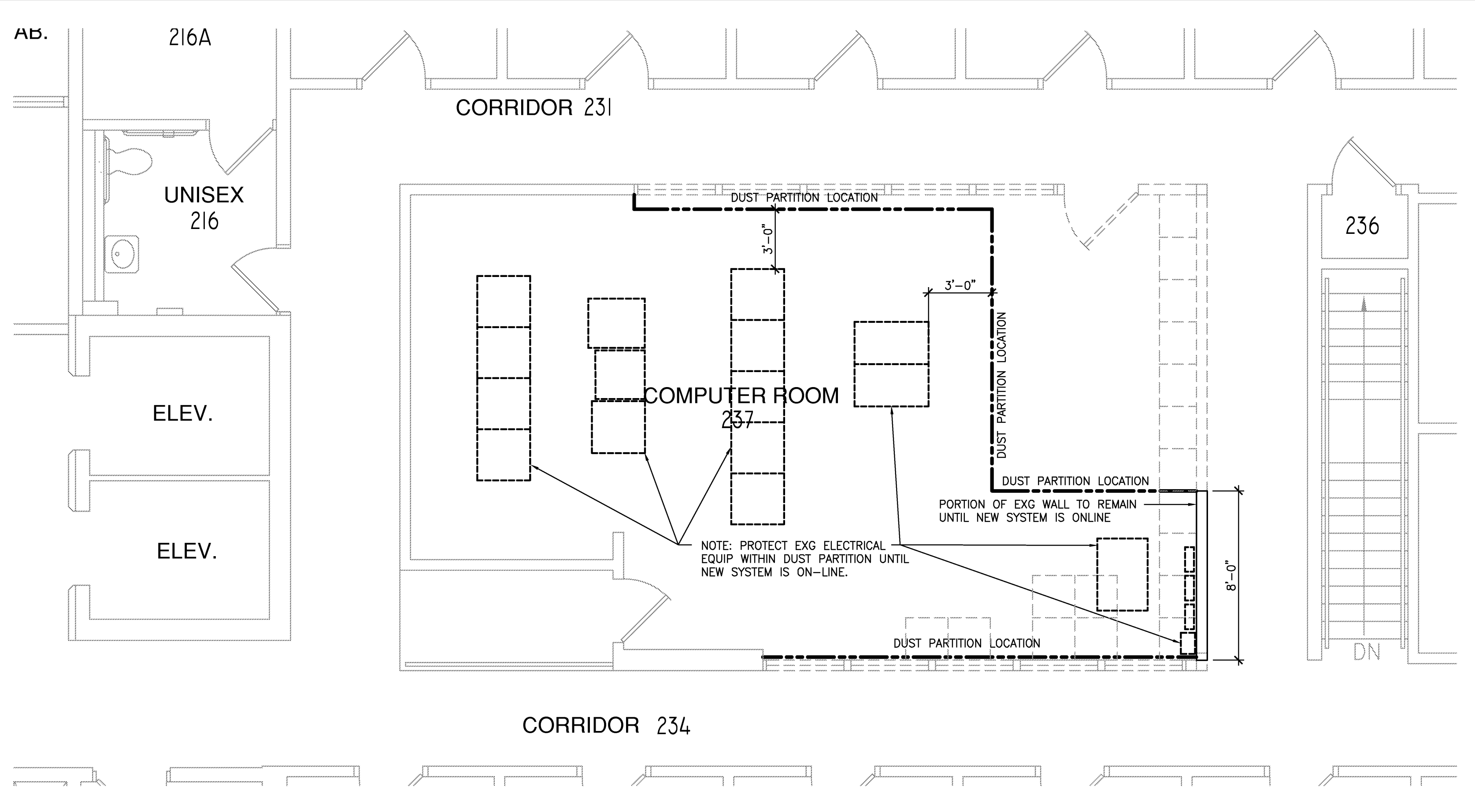
PARTITION TYPES/LEGEND
 1 1/2" = 1'-0" REF: C1



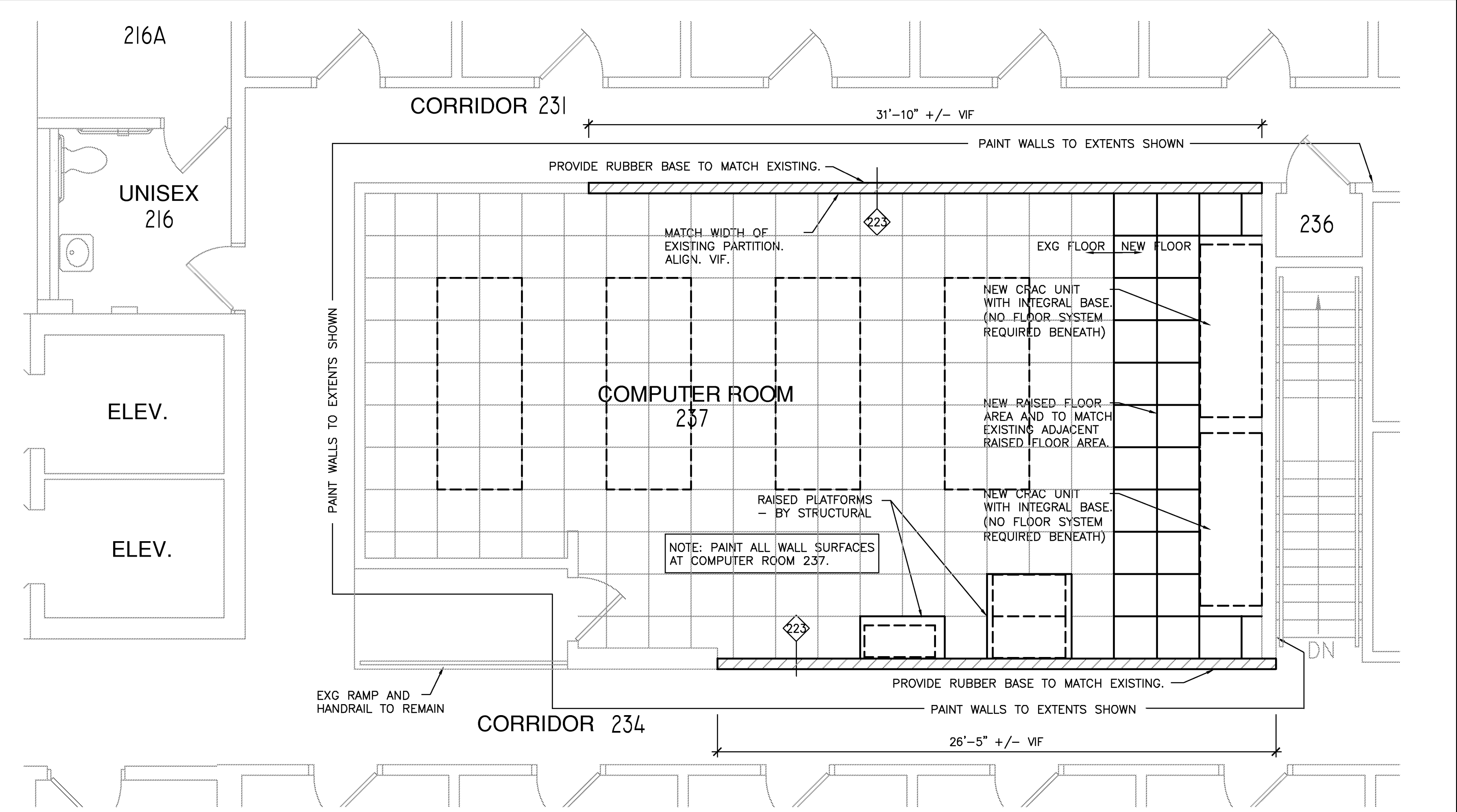
FIRST FLOOR DEMO PART PLAN
 1/4" = 1'-0" REF: - B2



FIRST FLOOR RCP PART PLAN
 1/4" = 1'-0" REF: - B1



DUST PARTITION PLAN PLAN
 1/4" = 1'-0" REF: - A2



FIRST FLOOR PART PLAN
 1/4" = 1'-0" REF: - A1

HARRIMAN
 Architects + Engineers

46 Harriman Drive
 Auburn, ME 04210
 207.784.5100 ext

123 Middle Street
 Portland, ME 04101
 207.775.0853 ext

One Perimeter Road
 Manchester, NH 03103
 603.626.1242 ext

www.harriman.com
 © 2011

Project Title
**UNIVERSITY OF MAINE SYSTEM
 DATA CENTER
 UPGRADES**
 Portland, Maine

HA Project No. **09533**

Key Plan

Mark	Date	Description
05-09-2011	ISSUED FOR BID	
04-05-2011	ISSUED FOR 100% REVIEW	
01-24-2011	ISSUED FOR 75% REVIEW	

Drawing Title
**FIRST FLOOR
 PART PLANS**

PA / PE: RCK
 Drawn By: AMM

Drawing Number
A10.1