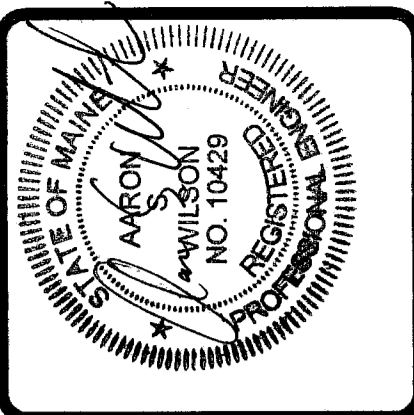
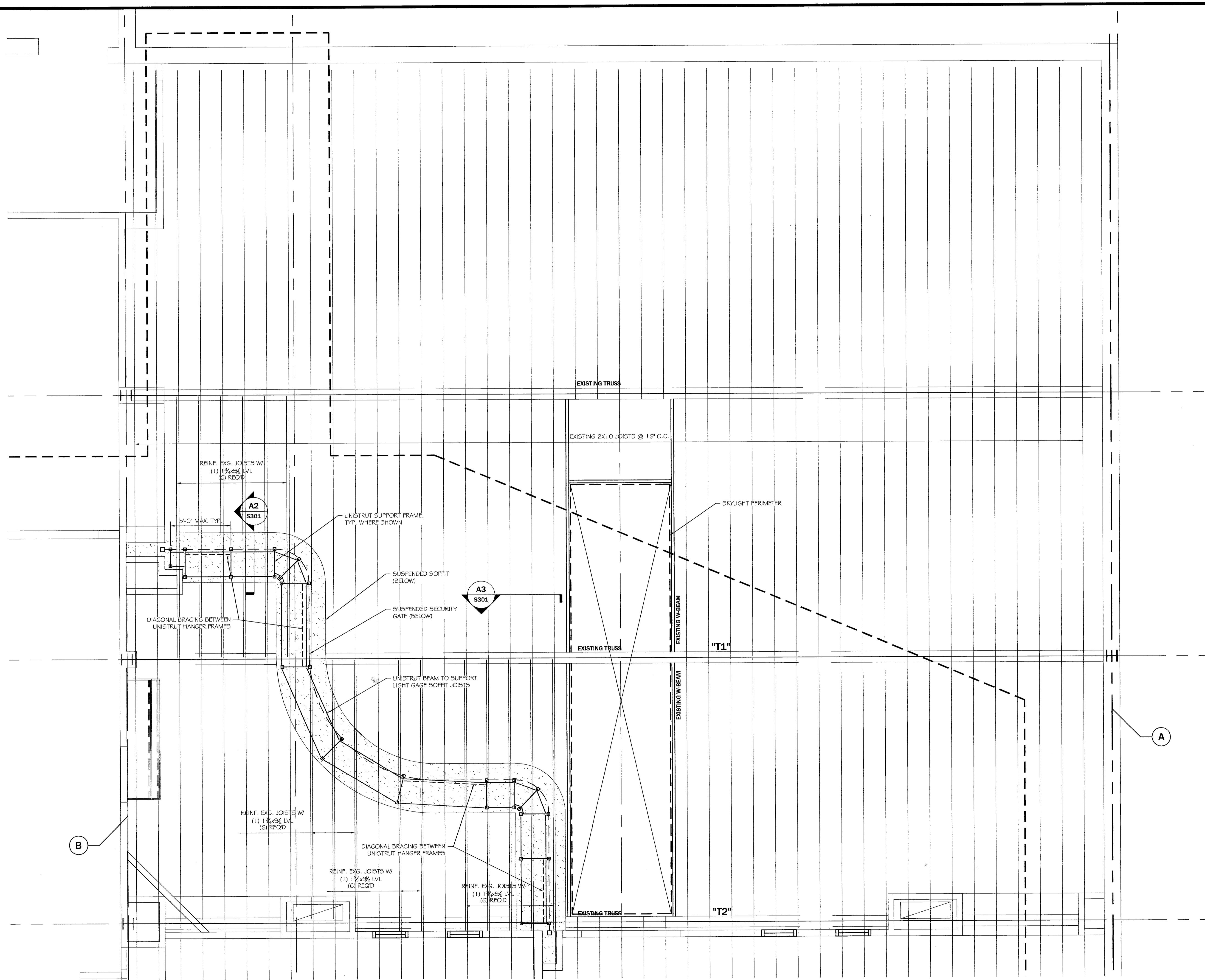


NOTES:

1. EXG. WOOD ROOF JOISTS ASSUMED TO BE #1/#2 SPF.
2. EXG. STEEL TRUSS ASSUMED TO BE Fy=36 KSI STEEL.
3. ROOF DESIGN LOADS:
DL=12 PSF
SL=35 PSF
DL (SOFFIT)= 35lb./FT. LINEAR
4. LVL FRAMING TO BE 2.0E 1900Fb BY BOISE CASCADE OR EQUAL.
5. NAIL MULTIPLE WOOD MEMBERS TOGETHER W/ 2 ROWS 16d NAILS @ 12" O.C. STAGGERED.
6. SOFFIT SUPPORT FRAMING TO BE MANUFACTURED BY "UNISTRUT," OR EQUAL. SEE S301 FOR MEMBER SIZES.
7. CONNECTIONS BETWEEN UNISTRUT MEMBERS TO BE AS RECOMMENDED BY MANUFACTURER, UNO.



ASSOCIATED DESIGN PARTNERS INC.
 80 Leighton Road
 Falmouth, Maine 04105
 Office: (207) 878-1751
 Fax: (207) 878-1788
 E-Mail: odp@odpengineering.com

THIS DRAWING, DESIGN AND ELECTRONIC FILE ARE THE PROPERTY OF ASSOCIATED DESIGN PARTNERS, INC. THE REPRODUCTION, COPYING OR ANY OTHER USE OF THIS DOCUMENT WITHOUT WRITTEN CONSENT IS PROHIBITED.

PROJECT: **USM CAMPUS CENTER**
PORTLAND, MAINE
 FOR: CONSIGLI, CONSTRUCTION

SHEET TITLE: **SOFFIT SUPPORT FRAMING PLAN**
 ISSUED FOR PERMITTING

REVISIONS	DESCRIPTION	DATE
No.	BY	
1	A	
2	A	
3	A	
4	A	

DATE : 06-23-06
 SCALE : AS NOTED
 DESIGN BY: ASW
 DRAWN BY: RSC
 FILE #: 06164-S401
 PROJECT NUMBER:
06164
 SHEET NO:
S101