

EXHAUST SYSTEM GENERAL NOTES

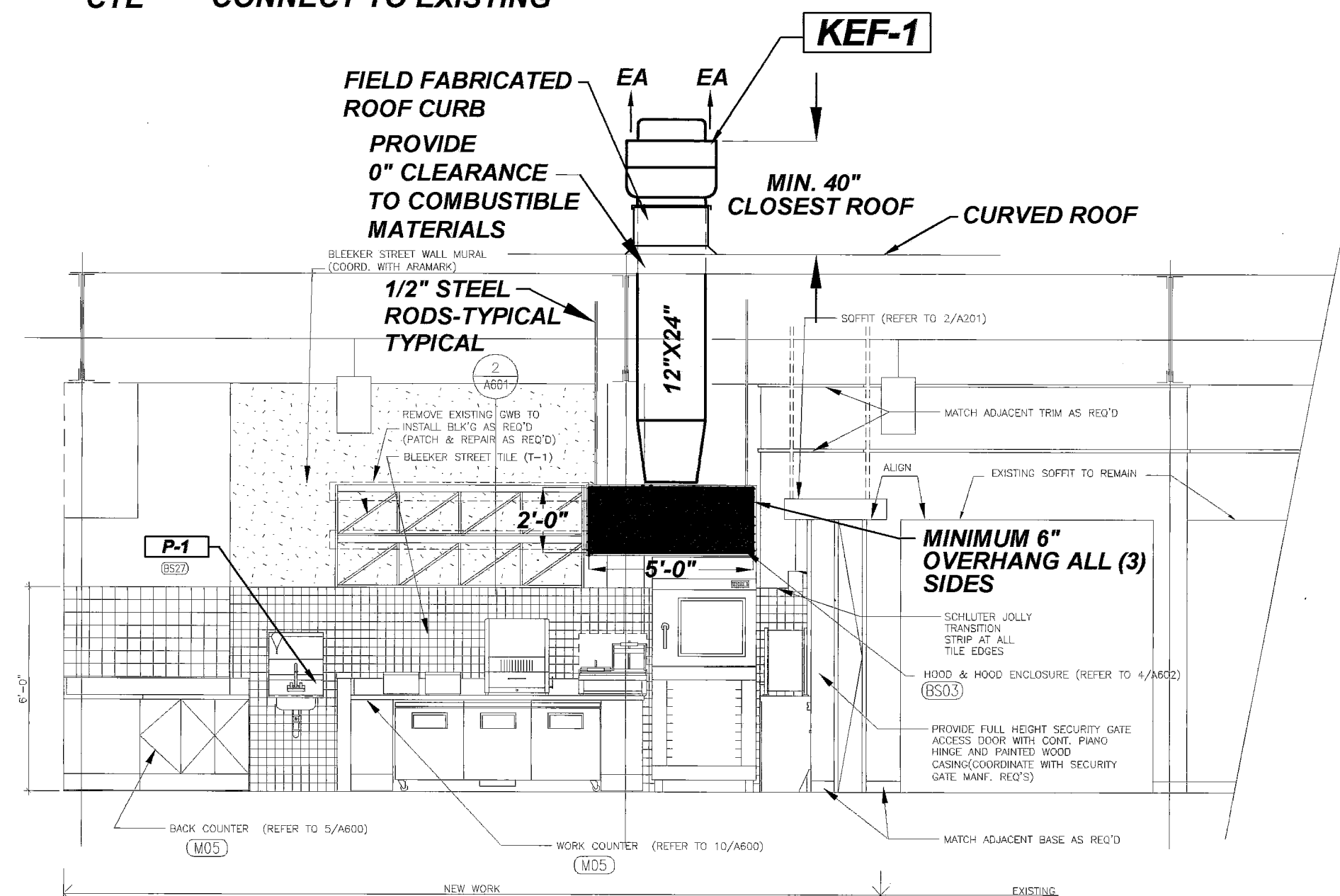
- HOOD CONTRACTOR SHALL COORDINATE INSTALLATION WITH OTHER TRADES.
- ALL DUCTWORK IS SHOWN DIAGRAMATICALLY. EXACT LOCATIONS ARE TO BE DETERMINED IN THE FIELD.
- ALL DUCT SIZES SHOWN ARE OUTSIDE DIMENSIONS.
- WIRE FIRE ALARM SYSTEM TO AUTOMATICALLY SHUT OFF ALL SOURCES OF FUEL AND HEAT FOR APPLIANCES UNDER THE HOOD.
- MAINTAIN MINIMUM 900 FPM AIR VELOCITY IN HOOD EXHAUST DUCTS
- HOOD EXHAUST DUCT INSULATION: APPLY FIRE MASTER COMMERCIAL KITCHEN DUCT WRAP FP-60 BLANKET TO MAINTAIN 0" CLEARANCE TO COMBUSTIBLES.
- HOOD FIRE EXTINGUISHING SYSTEM: NOT REQUIRED FOR TYPE II HOOD.
- TEMPERED MAKEUP AIR: FROM EXISTING HV-3 CAFETERIA UNIT.
- EXHAUST DUCT SHALL BE 24 GAUGE STAINLESS STEEL.

EXHAUST HOOD SPECIFICATIONS: VH-1 MODEL

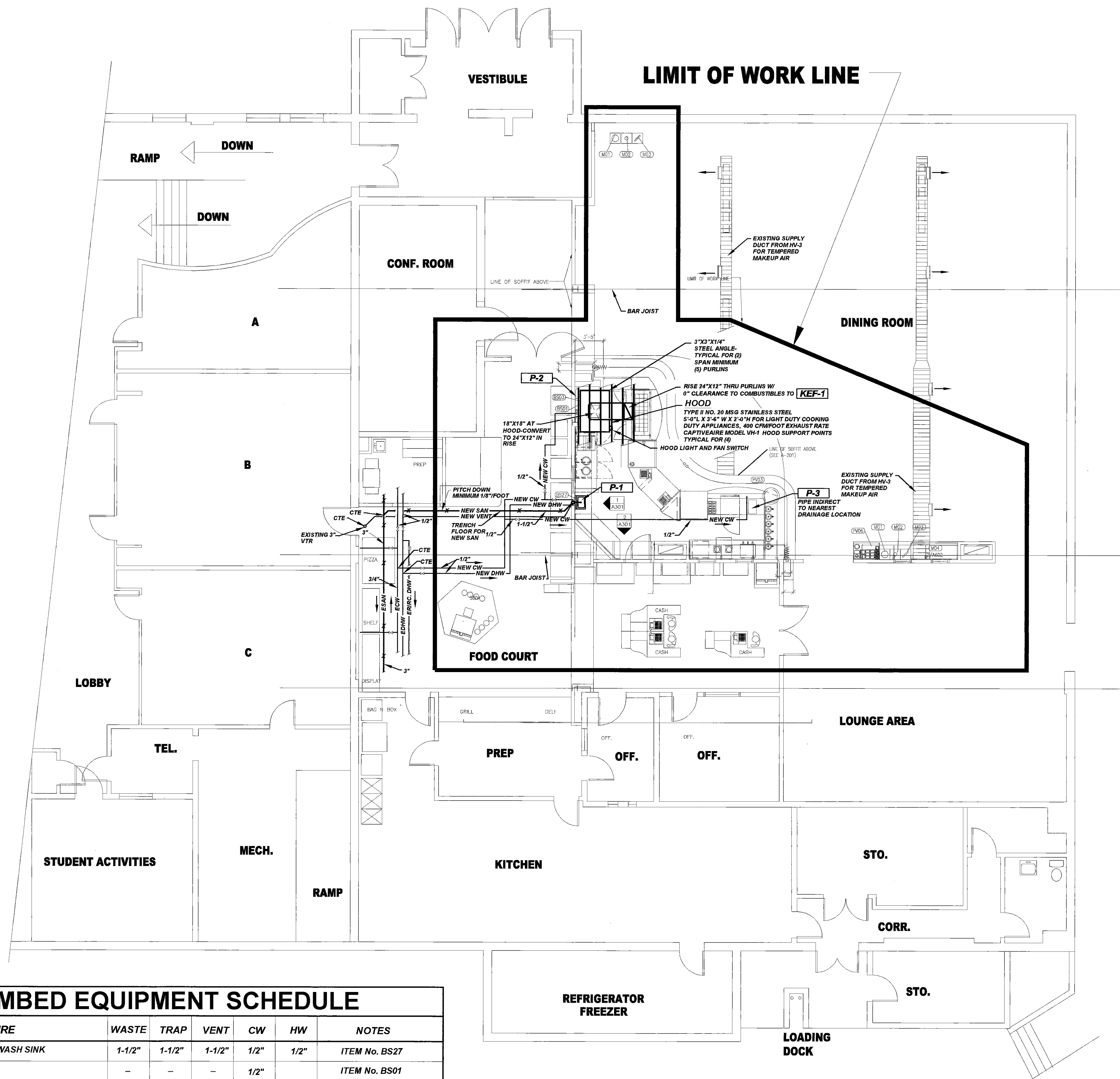
- TYPE II SINGLE WALL TYPE HOOD WITH NO BUILT-IN MAKE-UP AIR CAPABILITIES.
- HOOD COMPONENTS SHALL BE FABRICATED OF STAINLESS STEEL, #3 OR #4 POLISH, ON ALL EXPOSED SURFACES.
- HOOD SHALL BE PROVIDED WITH HANGING ANGLES ON EACH END OF THE HOOD.
- HOOD SHALL BE FITTED WITH A 1" THICK REMOVABLE MESH FILTERS AT DUCT LOCATION. FILTERS SHALL BE EASILY REMOVABLE FOR CLEANING PURPOSES.
- NOMINAL HOOD DIMENSIONS SHALL BE AS SHOWN ON DRAWINGS.

MECHANICAL LEGEND:

- ✕-ESAN-✕ EXISTING SANITARY PIPING UNDER FLOOR
- ✕-SAN-✕ SANITARY PIPING UNDER FLOOR
- VENT
- ECW --- EXISTING COLD WATER
- EDHW --- EXISTING DOMESTIC HOT WATER
- ERECIRC --- EXISTING RECIRCULATED DOMESTIC HOT WATER
- PIPE DROP
- GATE VALVE
- CIRCUIT SETTER
- EXHAUST DUCT
- EA EXHAUST AIR
- CW COLD WATER
- DHW DOMESTIC HOT WATER
- EF EXHAUST FAN
- FBO FURNISHED BY OTHERS
- VTR VENT THROUGH ROOF
- CTE CONNECT TO EXISTING



MECHANICAL ELEVATION
SCALE: 1/4" = 1'-0"



PLUMBED EQUIPMENT SCHEDULE

ITEM	FIXTURE	WASTE	TRAP	VENT	CW	HW	NOTES
P-1	WALL MOUNTED HANDWASH SINK	1-1/2"	1-1/2"	1-1/2"	1/2"	1/2"	ITEM No. BS27
P-2	BREAD OVEN (FBO)	-	-	-	1/2"	-	ITEM No. BS01
P-3	EXPRESSO MACHINE (FBO)	1-1/2"	-	-	1/2"	-	ITEM No. PV03

NOTE:
EXPRESSO MACHINE WASTE IS INDIRECT TO NEAREST DRAIN

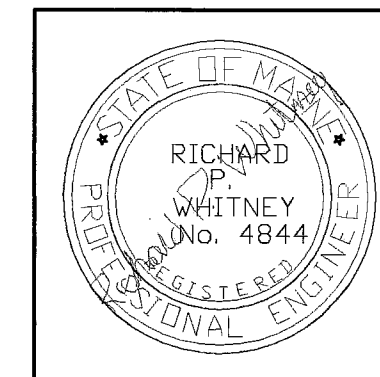
MECHANICAL PARTIAL FLOOR PLAN
SCALE: 1/8" = 1'-0"

FAN AND HOOD SCHEDULE

TAG	SERVICE	CFM	ESP	RPM	HP	WHEEL DIA. INCHES	POWER	MAX SONES	FAN WEIGHT LBS.	HOOD WEIGHT LBS.	CAPTIVEAIRE FAN MODEL #	NOTES
KEF-1	UPBLAST HOOD EXHAUST	2,000	1.0	1,225	3/4	14-1/2	208/60/3	15.0	140	181	NCA14FA	1, 2, 3 & 4

- NOTES:**
- PROVIDE HOOD FAN AND LIGHT SWITCH WITH PILOT LIGHT FOR FAN
 - KEF-1 SHALL BE UL 705 LISTED
 - PROVIDE FAN WITH HINGED BASE AND BIRD SCREEN
 - PROVIDE FIELD FABRICATED ROOF CURB

NO.	DATE	REVISIONS	DESCRIPTION



Engineer:
WHITNEY ENGINEERING P.A.
Mechanical Engineering
10 Danforth Street, Portland, ME 04101
207-874-7449 Fax: 207-874-7849

UNIVERSITY OF SOUTHERN MAINE
WOODBURY COMMONS
Portland, Maine

Mechanical Contractor
PORTLAND AIR CONDITIONING, INC.
P.O. Box 10300
Portland, Maine 04104

DESIGNED RPW	DATE 06-23-06
DRAWN RPW	SCALE AS SHOWN
CHECKED RPW	JOB. NO.

SHEET NO.
M-101

REPRODUCTION OR REUSE OF THIS DOCUMENT WITHOUT THE EXPRESSED WRITTEN CONSENT OF PORTLAND AIR CONDITIONING, INC. IS PROHIBITED.