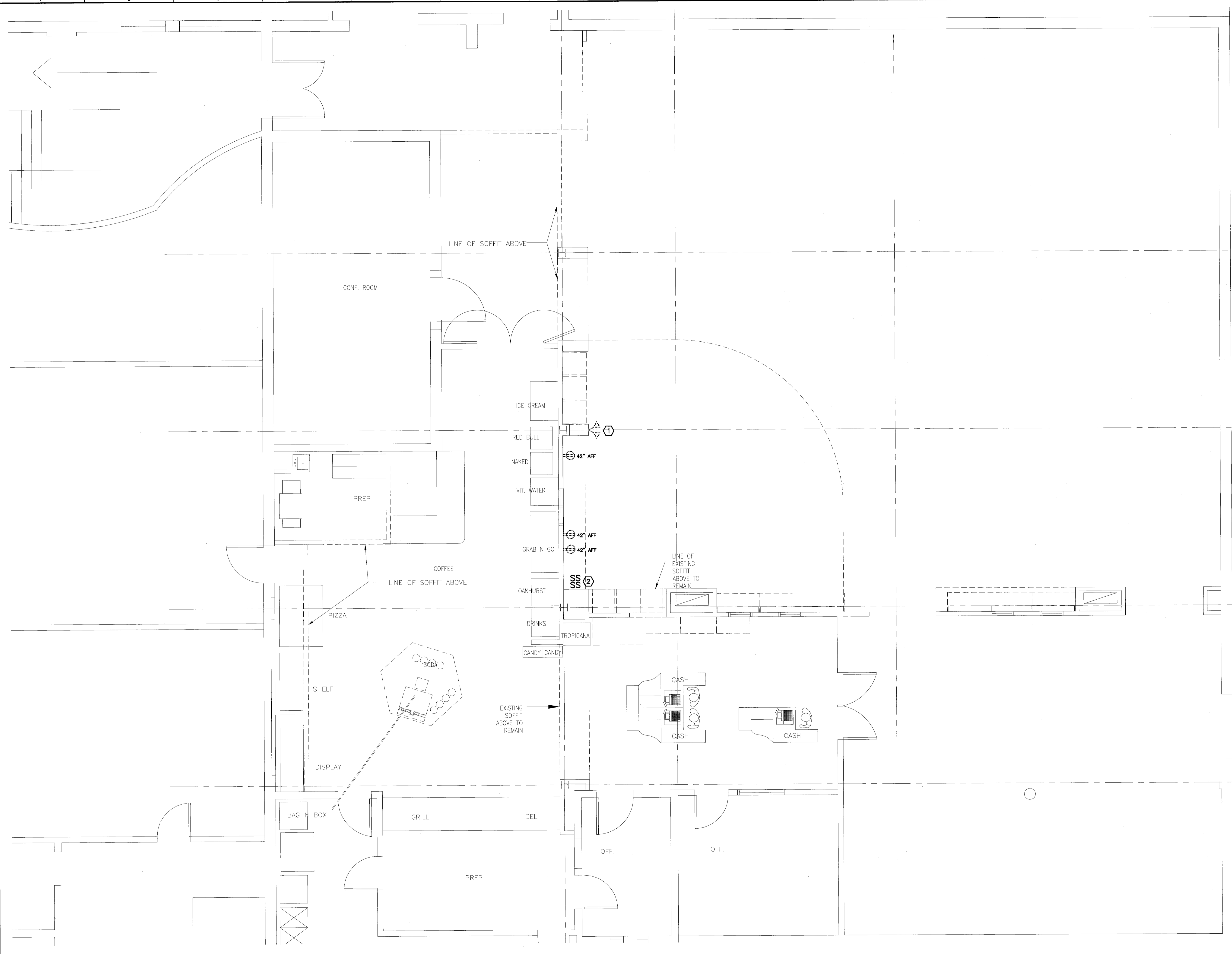
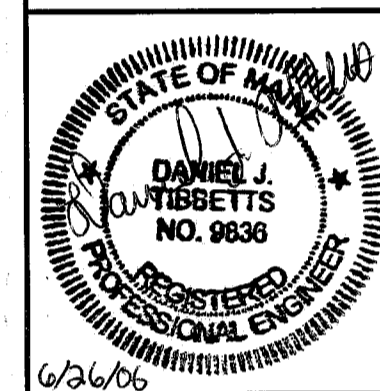


NOTE:

- SEE SHEET E-001 FOR LEGEND AND GENERAL NOTES.

KEYED NOTE:

- REMOVE EXISTING EMERGENCY LIGHTING HEAD AND RELOCATE AT LOCATION SHOWN ON EL101. EXTEND EXISTING WIRING AS REQUIRED TO ACCOMMODATE NEW LOCATION.
- RELOCATE SWITCHES FOR EXISTING INDIRECT CAFETERIA LIGHTS TO NEW LOCATION SHOWN ON EL101. EXTEND WIRING AS REQUIRED TO ACCOMMODATE NEW LOCATION.



UNIVERSITY OF MAINE
 KITCHEN RENOVATIONS
 PORTLAND & GORHAM CAMPUS
 PROJECT TITLE:
 CURRENT ISSUE STATUS:
ISSUED FOR CONSTRUCTION
6-23-06

| REV | DESCRIPTION | DATE |
|-----|-------------------------|---------|
| 0 | ISSUED FOR CONSTRUCTION | 6-23-06 |

GRAPHIC SCALE:
 0" 1"
 SCALE: AS NOTED
 PROJECT MANAGER: DJT
 JC/DRAWN BY: LAM
 A/E OF RECORD: DJT
 CAD FILE: ED101-06107
 PROJECT NO: 06107
 DATE: 6-23-06

SHEET TITLE:
WOODBURY COMMON
DEMOLITION PLAN

A1 FLOOR PLAN

1/4"=1'-0"