

- NOTES:**
1. DISCONNECT, REMOVE AND STORE WITH CARE ALL FIRE PROTECTION PIPING, COUPLING, SPRINKLER HEADS, SIGNAL RESTRAINTS, ETC. EXISTING MAINS, BRANCH PIPING AND SPRINKLER HEADS ARE SHOWN FOR REFERENCE.
 2. EXISTING PIPING SHALL BE REMOVED AND REINSTALLED IN ACCORDANCE WITH DRAIN, DUCTWORK, PLUMBING, PROCESS PIPING AND ELECTRICAL WORK.
 3. REMOVE AND INSTALL ADDITIONAL PIPING, GUESTS, BRANCH LINES OUT TO NEW SPRINKLER MAIN LOCATION SHOWN TO BE 11'-3" AFF. ±.
 4. INSTALL SIZED DEVICES PER REVIEW AFTER COORDINATION WITH OTHER TRADES.
 5. COORDINATE WITH ARCHITECTURAL PLANS FOR LOCATION OF SPRINKLER HEADS IN AREAS WITH SPRINKLER PROTECTION SHOWN WITH ALL TRADES. NEW MAINLINE SPRINKLER SHALL BE SHOWN.

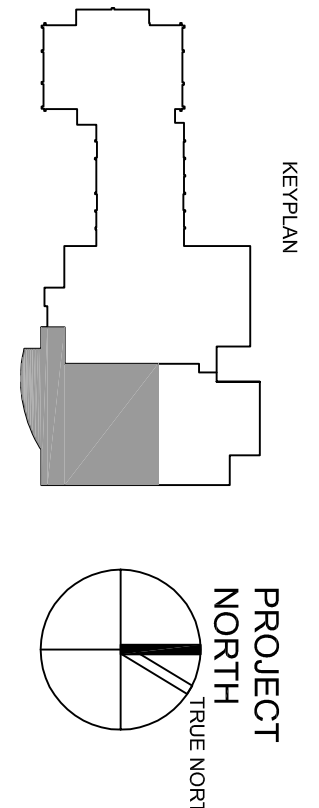
5
4.5
4.1
4
3
2
1

FOURTH FLOOR PLAN PART B

SCALE	1/4"=1'-0"
DRAWN BY	KAWR
CHECKED BY	
PROJ. MGR./ENGR.	MD/TCSW
PROJ. MGR.	KCH
JOB NO.	03048110
© SYMES MAINI & MCKEE ASSOCIATES, INC. 2014	

UNIVERSITY OF SOUTHERN MAINE
70 FALMOUTH STREET
PORTLAND, MAINE

**RESEARCH WING
PHASE III FIT-OUT**



FP1.04b

