

OWNER REVIEW DATE

NO.	DATE	DESCRIPTION
1	6-21-06	ISSUED FOR CONSTRUCTION
2	5-03-06	SCOPE REVISION
3	2-28-04	CONTRACT DOCUMENTS

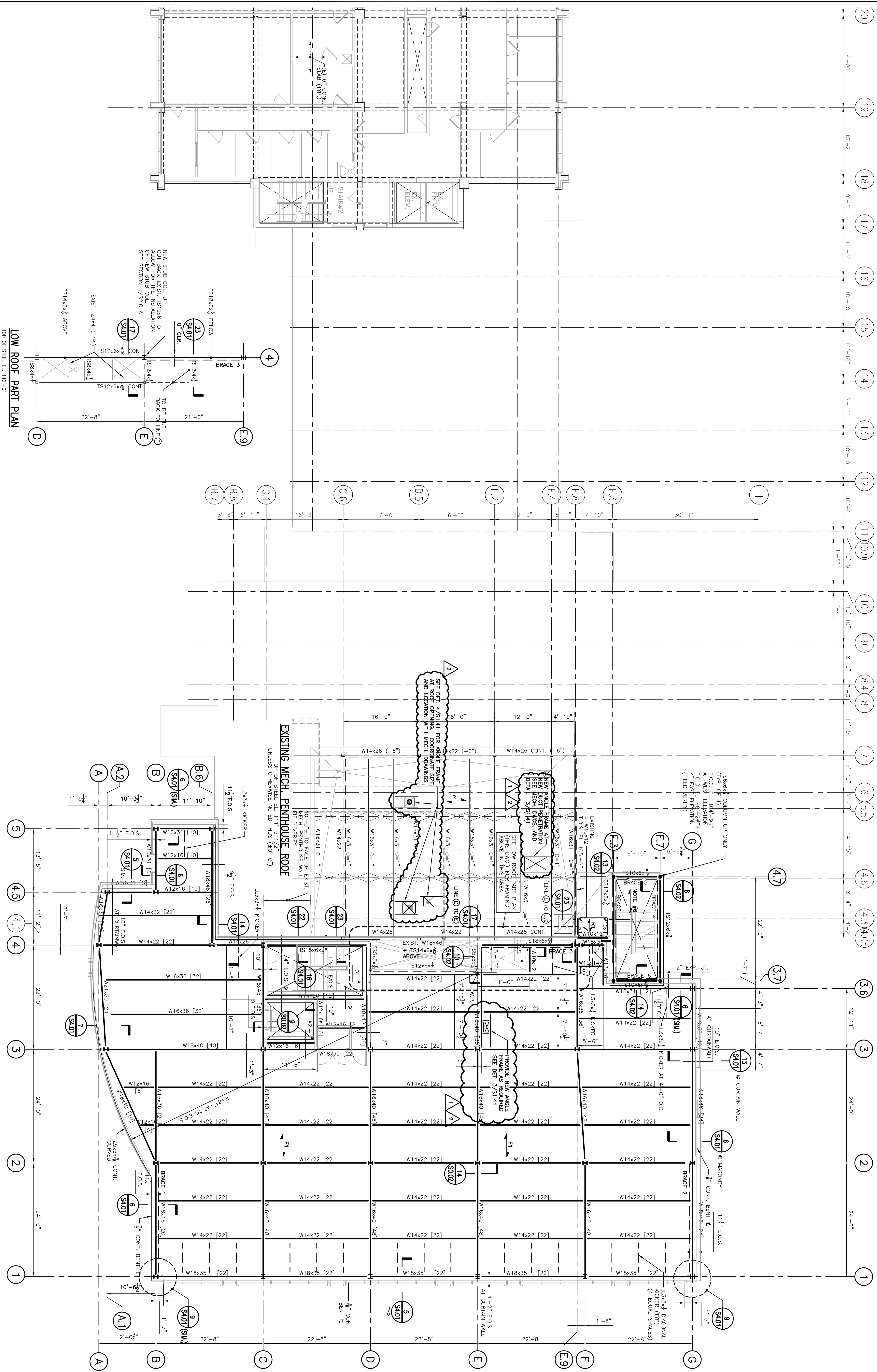
UNIVERSITY OF SOUTHERN MAINE
77 FALMOUTH STREET
PORTLAND, MAINE

**RESEARCH WING
PHASE III FIT-OUT**

**FIFTH FLOOR
FRAMING PLAN**

SCALE	1/8"=1'-0"
DRAWN BY	RTU/TMM
CHECKED BY	
PROJ. ARCH / ENGR.	FPL
PROJ. MGR.	RCH
JOB NO.	03044-10
© SOUTHERN MAINE ARCHITECT ASSOCIATES, INC. 2006	

S151



- NOTES:**
1. TOP OF STEEL ELEVATION, UNDERSIDE OF DECK SHALL BE EL. 108'-10" UNLESS OTHERWISE NOTED THUS (4.0'-0").
 2. FT INDICATES SPAN DIRECTION OF 3" LIGHT WEIGHT CONCRETE SLAB ON 2"x20 GAGE GALVANIZED COMPOSITE METAL DECK (5" TOTAL THICKNESS) REINFORCED WITH 6-6" W29x2.9 WWF.
 3. [] INDICATES NUMBER OF 3/4" LONG HEADED SHEAR CONNECTORS.
 4. [] INDICATES NUMBER OF 3/4" LONG HEADED SHEAR CONNECTORS.
 5. [] INDICATES BRACKED FRAME LOCATIONS.
 6. [] INDICATES MOMENT CONNECTION.
 7. [] REMOVE EXISTING 6" PRECAST PLANK ROOF SLAB.
 8. N.L.S. INDICATES FUTURE WORK NOT IN THIS CONTRACT.