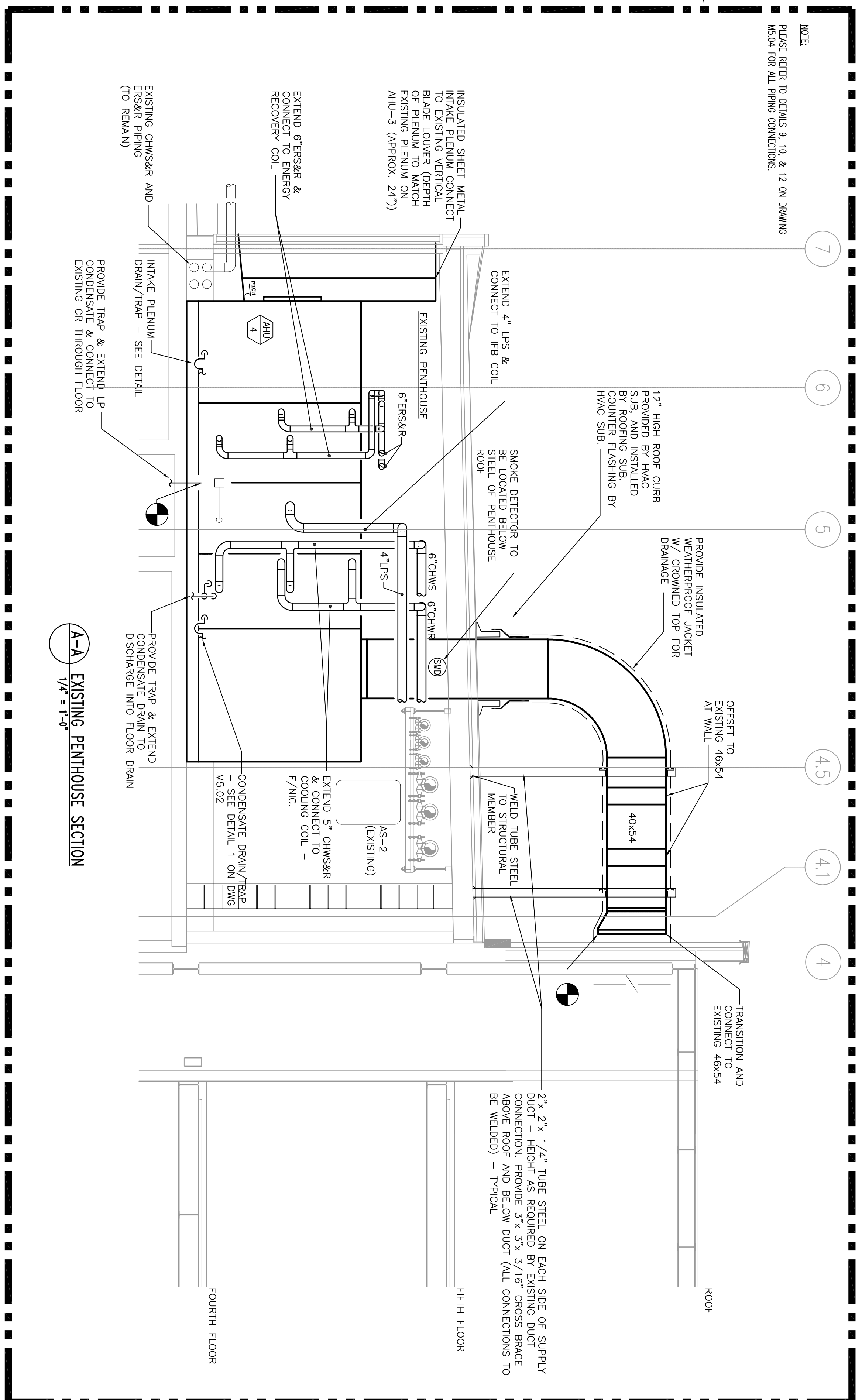


**A** 4TH FLOOR SECTION  
1/4" = 1'-0"  
M.I.O.M.

ALL WORK ON THIS SHEET IS PART OF INFRASTRUCTURE



**A-A** EXISTING PENHOUSE SECTION  
1/4" = 1'-0"

NOTE  
PLEASE REFER TO DETAILS B, 10, & 12 ON DRAWING  
M.I.O.M. FOR ALL PIPING CONNECTIONS.

2"x 2"x 1/4" TUBE STEEL ON EACH SIDE OF SUPPLY DUCT - HEIGHT AS REQUIRED BY EXISTING DUCT CONNECTION. PROVIDE 3"x 3"x 3/16" CROSS BRACE TO BE WELDED - TYPICAL.

INSULATED SHEET METAL INTAKE PLENUM CONNECT TO EXISTING VERTICAL SUPPLY DUCT. PROVIDE 3"x 3"x 3/16" CROSS BRACE TO BE WELDED - TYPICAL.

EXTEND 6" STRAPS & CONNECT TO ENERGY RECOVERY COIL

EXISTING PENHOUSE

6" STRAPS

4" TRAP

8" CHMS. 6" CHMS. 6" CHMS.

PROVIDE INSULATED W/ WEATHERPROOF JACKET W/ CROWNED TOP FOR DRAINAGE

12" HIGH ROOF CURB PROVIDED BY HVAC CONTRACTOR. PROVIDE COUNTER FLASHING BY HVAC SUB.

SMOKE DETECTOR TO BE LOCATED BELOW ROOF OF PENHOUSE

EXTEND 2" CHMS. COILING COIL - F/INIC.

CONDENSATE DRAIN/ TRAP M.S.D. DETAIL 1 ON DWG

WELD TUBE STEEL TO STRUCTURAL MEMBER

40x54

ROOF

TRANSITION AND CONNECT TO EXISTING 48x54

FOURTH FLOOR

FIFTH FLOOR

EXISTING CHASER AND REPAIR WORK (TO REMAIN)

INTAKE PLENUM - SEE DETAIL

DRAIN/TRAP - SEE DETAIL

REQUEST TRAP & EXTEND TO EXISTING OR THROUGH FLOOR

REQUEST TRAP & EXTEND TO EXISTING OR THROUGH FLOOR

CONDENSATE DRAIN TO DISCHARGE INTO FLOOR DRAIN

**SECTIONS**

SCALE	AS NOTED
DRAWN BY	GI
CHECKED BY	PHJ ARCH / ENGR GI
PROJ ARCH	RCH
PROJ MGR	RCH
JOB NO.	03048.10
OWNER	UNIVERSITY OF SOUTHERN MAINE ASSOCIATES, INC 2004

**RESEARCH WING PHASE III FIT-OUT**

ISSUE NO	06.21.06	ISSUE FOR CONSTRUCTION
NO.	05.03.06	SCOPE REVISION
DATE	03.22.06	100% GC REVIEW
DESCRIPTION		
ISSUE LOG		
UNIVERSITY OF SOUTHERN MAINE		
70 FALMOUTH STREET		
PORTLAND, MAINE		

**M4.01**